

MERAWAH

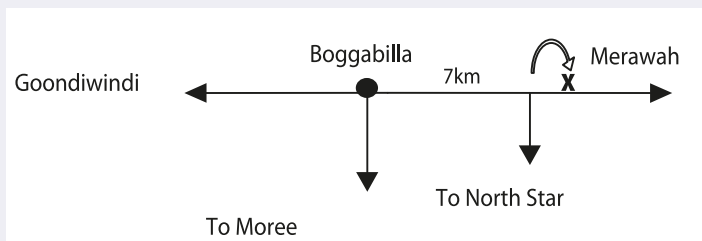
Poll Herefords

ANNUAL BULL SALE

BOGGABILLA NSW

14 JULY
2026

Sale Day Information



Sale Date & Time

Tuesday 14 July 2026 at **1.30pm**

Location

7km East of Boggabilla on the Tucka Tucka Road.

Performance & Fertility

All bulls have had their semen evaluated by Bovine Breeders and tested negative for pestivirus. They have been vaccinated with 7 - in - 1, vibrio vax, 3 day and treated with cydectin.

Errors

All announcements at sale time, written or oral, supercede any written material in the catalogue.

Accommodation

The Townhouse Motor Inn	07 4671 1855	***
Ascot Lodge Motor Inn	07 4671 5566	***
Country Roads Motor Inn	07 4671 3930	***
Jolly Swagman Motor Inn	07 4671 4560	***
Goondiwindi Motel	07 4671 1544	***

*** Have restaurants

Insurance

Insurance representatives will be in attendance at the sale.

3% AGENTS REBATE

Licensed agents must accompany their clients to the sale to qualify for this rebate. A 1% Agents Rebate is also on offer to those agents not attending but introduce their client in writing 24 hours prior to the sale.

DELIVERY

FREE delivery within 500 klms.

AGENTS

Elders Limited

Goondiwindi Office	07 4670 0000
Peter Fleming	0407 455 562
Toowoomba – Andrew Meara	0427 210 634
Toowoomba – Michael Smith	0428 541 711
Tamworth – Bryan Kennedy	0427 844 047
Dubbo – Paul Jameson	0428 667 998

AWN Wilks & McKean

Wagga Wagga Office	
Tim McKean	0429 669 049
Joe Wilks	0408 681 863

Auctioneer

Paul Dooley.....	0458 662 646
------------------	--------------

Herefords Australia (HAL) have been advised by the American Hereford Association (AHA) that a new genetic condition has been discovered in Hereford cattle, Delayed Blindness (DB). The condition is a recessive gene and requires two affected carrier parents to pass on the defect. It is not fatal and results in impaired vision, usually around 12 months of age. The probability of animals carrying two copies of the gene is very low with no known cases of affected animals in Australia that (HAL) are aware of.

Along with other breeders, we used TH Masterplan183F in the spring of 2023 due to his outstanding

performance record in the US and here. Subsequently we became aware that he was a DB carrier after the calves were born but have seen no progeny here showing any signs of the condition. There are 378 progeny of 183F registered in Australia with no Delayed Blindness Affected (DFA) offspring reported. Cross breeding with other breeds WILL NOT result in DB animals and we believe that the chances of any bull in this sale by 183F breeding an affected calf on straight hereford cattle are extremely low. DB carriers in the sale are lots 21, 22, 29, 34 and 51.

CONTACT: MERAWAH

Andrew & Carolyn Mackay

Mobiles: 0428 140 175
or 0427 100 970
www.merawah.com.au
email: amac860@gmail.com

Kelly & Teeny Runzer:
0437 123 037
kelly.runzer@bigpond.com

Welcome to MERAWAH



Well, it's been quite a turn around in the last few days as I sat down to write this foreword with good to outstanding rainfall totals being recorded up and down the east coast with many drought stricken areas (including us!) getting some much needed relief from the ongoing dry conditions. To say the cattle market responded well to the rain would be an understatement! The market continues to hit new highs week on week at the moment and it's a great time to be in the cattle business, especially if you've got some grass. The ever increasing demand for protein world wide will keep it that way for some time to come.

This year is a landmark one for us as we mark 100 years of breeding Herefords at "Merawah". For a little history – my grandfather initially purchased a number of horned Hereford cows from the Me Mel and Carbean Dispersal sales in 1926. Predominately Hobartville bulls were used for ten years over those cows and these would become the foundation cows for the Merawah Poll Hereford stud founded in 1936. We also imported two poll Hereford cows from America at that time including Belle Canadian who was champion of her year in the US and went on to be a great success out here producing several influential sires for us. Since that time we have never deviated from trying to deliver the most consistent, profitable seed stock to producers all over the country, some of whom have been with us for generations.

This years bulls are another powerful bunch and include the first sons of the \$130,000 Truro Sherlock who's added the carcass shape and power we were expecting from him. Whilst the seasonal conditions have been challenging this year the bulls have done extremely well on 4 kgs of DDG pellets/day lately and native grasses –we like them strong and fit and ready to go straight out to work. As always the dams of these bulls are fertile, big cows that can withstand the tough conditions like they have experienced the last 6 months here with no supplementation.

While we'd love you to be here and help us celebrate 100 years of Herefords at "Merawah", you can still access the sale through Auctions plus if you can't make it on the day or call one of the sale staff on the opposite side and they will be able to help you

Looking forward to seeing you on July 14!

Reference Sires



TRURO SHERLOCK S188 (S)

21/08/2021

REG: S188

DAYS ROBIN HOOD H38 (AI) (ET) (PP)
 HUNTER LAKES LANCELOT L103 (AI) (ET) (PP)
 HUNTER LAKES FANCY F7 (AI) (P)
YALGOO PEACEMAKER P034 (AI) (PP)
 CHURCHILL STUD 3134A (IMP USA) (PP)
 YALGOO TIGRESS L265 (ET) (P)
 YALGOO TIGRESS Z241 (H)
 REMITALL EMBRACER 8E (IMP CAN) (P)
 DAYS BLACKBERRY G82 (AI) (P)
 ALLENDALE FANCY B94 (AI) (P)
TRURO DAFFODIL M066 (AI) (H)
 MERAWAH CADET F31 (P)
 TRURO DAFFODIL J180 (P)
 TRURO DAFFODIL F035 (H)

MAY 2025 Hereford GROUP BREEDPLAN						
CE DIR	CE DTRS	GL	BW	200	400	600
-0.4	+3.4	-1.4	+6.8	+45	+71	+102
61%	48%	90%	88%	88%	83%	83%

Milk	Scrotal	Carcass	EMA	Rib	Rump	Retail	IMF
+21	+4.0	+64	+6.7	-0.7	-1.4	+2.7	+0.9
69%	87%	71%	65%	66%	71%	60%	68%



TRURO SPARTACUS S135 (AI) (PP)

14/06/2021

REG: S135

NJW 73S M326 TRUST 100W ET (IMP USA)
 (ET) (P)
 C ETF WILDCAT 4248 (ET) (P)
 RPH MAIDEN 95T (P)
CHURCHILL GUNPOWDER 657D (IMP USA) (ET) (PP)
 GOLDEN OAK OUTCROSS 18U (P)
 CHURCHILL LADY 002X ET (P)
 CHURCHILL LADY 600S ET (P)
 ALLENDALE ANZAC E114 (PP)
 CENTENNIAL ANZAC L055 (AI) (ET) (PP)
 DUNOON PAGEANT G007 (P)
TRURO UNITY P093 (P)
 MERAWAH HIGHLIGHT E62 (AI) (P)
 TRURO UNITY M156 (H)
 RAYLEIGH S UNITY G65 (H)

MAY 2025 Hereford GROUP BREEDPLAN						
CE DIR	CE DTRS	GL	BW	200	400	600
+9.0	+16.1	-5.8	+4.6	+50	+81	+114
60%	47%	78%	85%	84%	81%	81%

Milk	Scrotal	Carcass	EMA	Rib	Rump	Retail	IMF
+24	+4.7	+82	+5.9	-1.3	-1.9	+1.9	+0.6
68%	83%	67%	61%	62%	66%	54%	64%



MOUNTAIN VALLEY REX R113 (PP)

28/09/2020

REG: R113

ALLENDALE ANZAC E114 (PP)
 INJEMIRA ANZAC H006 (PP)
 INJEMIRA MARINDA B028 (AI) (P)
INJEMIRA ANZAC H006 M187 AI (AI) (PP)
 DEBARRY RUGGERO (S)
 INJEMIRA PLUM E212 (P)
 BURANDO Y2 PLUM 39 (P)
 INJEMIRA ANZAC H003 (P)
 RAYLEIGH LANCELOT L60 (P)
 RAYLEIGH L BELLA H81 (P)
MOUNTAIN VALLEY SHAMROCK P049 (P)
 MOUNTAIN VALLEY GAMBLER G14 (P)
 MOUNTAIN VALLEY SHAMROCK K207 (AI) (ET) (P)
 MOUNTAIN VALLEY SHAMROCK C12 (AI) (P)

MAY 2025 Hereford GROUP BREEDPLAN						
CE DIR	CE DTRS	GL	BW	200	400	600
-15.6	-8.4	-0.3	+8.4	+48	+83	+122
58%	48%	75%	82%	85%	81%	81%

Milk	Scrotal	Carcass	EMA	Rib	Rump	Retail	IMF
+26	+2.5	+79	+7.3	-0.4	-0.1	+2.4	+0.0
66%	87%	69%	65%	65%	70%	59%	67%



MERAWAH BIG DEAL T032 (AI) (PP)

06/06/2022

REG: T032

KOANUI UNANIMOUS 7174 (P)
 KOANUI UNANIMOUS 0408 (P)
 KOANUI GIRLIE 3048 (P)
KOANUI TECHNO 3062 (IMP NZL) (PP)
 LEELANDS X-TENSION 293 (P)
 KOANUI BLUSH 6455 (P)
 KOANUI BLUSH 3304 (P)
 MERAWAH THUNDER W31 (P)
 MERAWAH TYPHOON A85 (P)
 MERAWAH SHAMROCK W141 (P)
MERAWAH SHAMROCK G38 (AI) (ET) (P)
 HF 4L BEYOND 36N (IMP CAN) (PP)
 MERAWAH SHAMROCK A87 (AI) (P)
 MERAWAH SHAMROCK W99 (AI) (P)

MAY 2025 Hereford GROUP BREEDPLAN						
CE DIR	CE DTRS	GL	BW	200	400	600
-12.8	-0.4	+1.7	+7.7	+43	+68	+103
66%	60%	78%	81%	81%	79%	80%

Milk	Scrotal	Carcass	EMA	Rib	Rump	Retail	IMF
+20	+1.8	+70	+4.9	-0.1	-0.6	+2.1	-0.2
73%	82%	70%	67%	67%	70%	61%	69%

1**MERAWAH LANCER V023 (AI) (PP)****H****D.O.B: 15/05/2024****REG: V023**

ALLENDALE WATERHOUSE D1 (PP)
 DAYS ROBIN HOOD H38 (AI) (ET) (PP)
 ALLENDALE FANCY U5 (AI) (P)
HUNTER LAKES LANCELOT L103 (AI) (ET) (PP)
 SOUTH BUKALONG WALLACE 2 (P)
 HUNTER LAKES FANCY F7 (AI) (P)
 ALLENDALE FANCY D24 (AI) (P)

WIRRUNA JUSTIN J13 (AI) (PP)
 MERAWAH JUSTICE P021 (AI) (P)
 MERAWAH SHAMROCK L46 (AI) (P)
MERAWAH URSULA R134 (P)
 MERAWAH MILE HIGH M035 (AI) (PP)
 MERAWAH URSULA P059 (P)
 MERAWAH URSULA M038 (AI) (P)

**MAY 2026 Hereford GROUP BREEDPLAN**

CE DIR	CE DTRS	GL	BW	200	400	600	Milk	Scrotal	Carcass	EMA	Rib	Rump	Retail	IMF
+15.3	+10.8	-5.4	+1.4	+30	+54	+74	+14	+2.1	+56	+6.6	+0.7	+2.3	+1.6	+0.7
60%	51%	75%	79%	78%	76%	78%	69%	78%	64%	59%	61%	64%	51%	64%

- Used on stud heifers last spring.
- Powerful with a great outlook and a lovely head and eye.
- Some powerful cow families in his pedigree
- Ideal data set.

Purchaser _____

\$ _____

2**MERAWAH SHERWOOD V067 (P)****D.O.B: 07/07/2024****REG: V067**

HUNTER LAKES LANCELOT L103 (AI) (ET) (PP)
 YALGOO PEACEMAKER P034 (AI) (PP)
 YALGOO TIGRESS L265 (ET) (P)
TRURO SHERLOCK S188 (S)
 DAYS BLACKBERRY G82 (AI) (P)
 TRURO DAFFODIL M066 (AI) (H)
 TRURO DAFFODIL J180 (P)

DEBARRY ELLIOTT (P)
 MERAWAH EXPO C39 (AI) (P)
 MERAWAH COLLEEN R112 (AI) (P)
MERAWAH IRISH ROSE G33 (AI) (ET) (P)
 KAIRURU ABERDEEN 03 0047 (IMP NZL) (P)
 MERAWAH IRISH ROSE B1 (AI) (P)
 MERAWAH IRISH ROSE X147 (P)

**MAY 2026 Hereford GROUP BREEDPLAN**

CE DIR	CE DTRS	GL	BW	200	400	600	Milk	Scrotal	Carcass	EMA	Rib	Rump	Retail	IMF
+2.3	+8.7	+0.8	+5.9	+38	+66	+96	+15	+1.7	+61	+5.0	-0.1	-0.1	+1.4	+0.3
56%	45%	75%	79%	78%	76%	77%	67%	79%	62%	57%	59%	63%	51%	61%

- Stud sire prospect by Sherlock.
- Dam is one of our best cows ever with 5 sons used in the herd.
- Grand dam B1 made over \$500,000 for Ravensdale PHS while she was there.
- Used in the stud last spring.

Purchaser _____

\$ _____

3

MERAWAH SHERLOCK V045 (HPR) (P)

D.O.B: 19/06/2024**REG: V045**

HUNTER LAKES LANCELOT L103 (AI) (ET) (PP)
 YALGOO PEACEMAKER P034 (AI) (PP)
 YALGOO TIGRESS L265 (ET) (P)
TRURO SHERLOCK S188 (S)
 DAYS BLACKBERRY G82 (AI) (P)
 TRURO DAFFODIL M066 (AI) (H)
 TRURO DAFFODIL J180 (P)

NJW 78P TWENTYTWELVE 190Z (IMP CAN)
 (AI) (ET) (P)
 MERAWAH TWENTYTWELVE M097 (AI) (ET) (PP)
 MERAWAH SHAMROCK K13 (AI) (P)
MERAWAH COMM Q087 (HPR) (P)
 MERAWAH MARANOVA J5 (AI) (P)
 MERAWAH COMM M074 (HPR) (P)
 MERAWAH COMM G13 (HPR) (S)



MAY 2026 Hereford GROUP BREEDPLAN														
CE DIR	CE DTRS	GL	BW	200	400	600	Milk	Scrotal	Carcass	EMA	Rib	Rump	Retail	IMF
+6.6	+3.2	-2.3	+5.3	+41	+71	+91	+19	+3.4	+60	+5.8	+0.4	+0.6	+1.1	+1.6
53%	41%	74%	77%	76%	74%	75%	62%	77%	58%	53%	55%	59%	46%	58%

- Very stylish son of Sherlock.
- Very long bodied with beautiful skin and hair type.
- Dam is a great daughter of the good M97 bull who left us some terrific cows.
- Ideal data set

Purchaser _____

\$ _____

4

MERAWAH REX V066 (PP)

D.O.B: 07/07/2024**REG: V066**

INJEMIRA ANZAC H006 (PP)
 INJEMIRA ANZAC H006 M187 AI (AI) (PP)
 INJEMIRA PLUM E212 (P)
MOUNTAIN VALLEY REX R113 (PP)
 RAYLEIGH LANCELOT L60 (P)
 MOUNTAIN VALLEY SHAMROCK P049 (P)
 MOUNTAIN VALLEY SHAMROCK K207 (AI) (ET) (P)

NJW 73S M326 TRUST 100W ET (IMP USA) (ET) (P)
 NJW 78P TWENTYTWELVE 190Z (IMP CAN) (AI) (ET) (P)
 NJW BW LADYSPORT DEW 78P ET (P)
MERAWAH SHAMROCK N018 (AI) (ET) (P)
 TYCOLAH JOVIAL F77 (PP)
 MERAWAH SHAMROCK J68 (AI) (ET) (P)
 MERAWAH SHAMROCK A87 (AI) (P)



MAY 2026 Hereford GROUP BREEDPLAN														
CE DIR	CE DTRS	GL	BW	200	400	600	Milk	Scrotal	Carcass	EMA	Rib	Rump	Retail	IMF
-17.2	-10.2	-1.3	+6.9	+40	+76	+116	+24	+1.5	+73	+6.2	-0.9	-0.8	+2.1	+0.4
56%	45%	73%	78%	77%	75%	77%	64%	79%	61%	57%	58%	62%	50%	61%

- Big goggle eyed Rex son that could handle some stud duties.
- Dam is a great old 2012 daughter that's had bulls sell to \$24,000.
- She's a grand daughter of the great old A87 cow who probably has more females in the herd than anyone.

Purchaser _____

\$ _____

5

MERAWAH REX V056 (PP)

D.O.B: 25/06/2024**REG: V056**

INJEMIRA ANZAC H006 (PP)
 INJEMIRA ANZAC H006 M187 AI (AI) (PP)
 INJEMIRA PLUM E212 (P)
MOUNTAIN VALLEY REX R113 (PP)
 RAYLEIGH LANCEALOT L60 (P)
 MOUNTAIN VALLEY SHAMROCK P049 (P)
 MOUNTAIN VALLEY SHAMROCK K207 (AI) (ET) (P)
 NJW 73S M326 TRUST 100W ET (IMP USA) (ET) (P)
 NJW 78P TWENTYTWELVE 190Z (IMP CAN) (AI) (ET) (P)
 NJW BW LADYSPORT DEW 78P ET (P)
MERAWAH SHAMROCK M023 (AI) (ET) (P)
 DAYS CALIBRE G74 (PP)
 MERAWAH SHAMROCK K13 (AI) (P)
 MERAWAH SHAMROCK F61 (P)



MAY 2026 Hereford GROUP BREEDPLAN														
CE DIR	CE DTRS	GL	BW	200	400	600	Milk	Scrotal	Carcass	EMA	Rib	Rump	Retail	IMF
-5.9	+4.1	-1.8	+6.7	+45	+77	+105	+14	+2.5	+69	+6.8	+0.2	+0.6	+2.2	+0.0
54%	44%	71%	77%	76%	74%	76%	63%	78%	60%	55%	56%	60%	48%	59%

- Very similar to the previous lot in appearance and pedigree.
- Powerful bulls over strong, predictable cow families gives you bulls like these.
- Lovely skin and hair, heaps of performance.
- Top 10% 200,400,600 day weight
- Top 10% EMA and RBY.

Purchaser _____

\$ _____

6

TENARU VINDICATE V12 (PP)

D.O.B: 04/07/2024**REG: V012**

DAYS ELABORATE J59 (AI) (P)
 GRATHLYN HOLYFIELD N019 (AI) (P)
 GRATHLYN JEWESS L004 (AI) (PP)
ARMADA ROFF (PP)
 YAVENVALE GURU G031 (PP)
 ARMADA ESTHER M083 (AI) (P)
 ARMADA ESTHER J90 (P)
 GHR MILLIONAIRE 10E 25M (P)
 MCCOY 25M RENAISSANCE 53W (IMP CAN) (PP)
 MCCOY 47N CONNIE 72R (P)
TENARU CORISANDE G6 (AI) (PP)
 PINE HILL FENTON Z552 (P)
 TENARU CORISANDE E4 (P)
 TENARU CORISANDE B3 (P)



MAY 2026 Hereford GROUP BREEDPLAN														
CE DIR	CE DTRS	GL	BW	200	400	600	Milk	Scrotal	Carcass	EMA	Rib	Rump	Retail	IMF
-14.9	-5.8	-0.9	+8.2	+45	+74	+101	+6	+2.9	+61	+3.4	-0.3	-0.3	+1.3	-0.2
55%	45%	75%	78%	77%	75%	77%	65%	78%	62%	56%	59%	63%	51%	62%

- Very attractive Roff son out of the \$20,000 Katmandu bulls mother.
- Great effort for an old G model cow – they don't stay that long unless they keep on having the good ones.
- Lots of carcass with that skin and hair we like.

Purchaser _____

\$ _____

7

MERAWAH RICARDO V028 (HPR) (AI) (PP)

D.O.B: 15/05/2024 REG: V028

WIRRUNA KELSO K23 (AI) (PP)
 GLENDAN PARK PANAMA P004 (PP)
 GLENDAN PARK FANCY M043 (AI) (P)
YARRANDABBIE RICHARD R004 (AI) (PP)
 ALLENDALE ANZAC K4 (ET) (PP)
 YARRANDABBIE ELAINE P011 (P)
 YARRANDABBIE ELAINE G012 (AI) (H)
 NJW 78P TWENTYTWELVE 190Z (IMP CAN)
 (AI) (ET) (P)
 MERAWAH TWENTYTWELVE M097 (AI) (ET) (PP)
 MERAWAH SHAMROCK K13 (AI) (P)
MERAWAH COMM Q054 (HPR) (P)
 DAYS CALIBRE G74 (PP)
 MERAWAH COMM L49 (HPR) (AI) (P)
 MERAWAH COMM F153 (HPR) (P)



MAY 2026 Hereford GROUP BREEDPLAN														
CE DIR	CE DTRS	GL	BW	200	400	600	Milk	Scrotal	Carcass	EMA	Rib	Rump	Retail	IMF
-3.1	-1.6	-1.1	+4.5	+34	+58	+76	+19	+1.4	+56	+7.3	+0.0	+0.5	+2.1	+0.3
58%	45%	76%	79%	78%	76%	77%	63%	79%	62%	57%	58%	63%	50%	62%

- Deep bodied, easy doing son of the \$70,000 Richard bull.
- ½ brother sold for \$24,000 in our 2024 sale.
- Loads of pigment, free moving – I'd love a pen full or two just like him.

Purchaser _____ \$ _____

8

MERAWAH REALTOR V035 (PP) H

D.O.B: 16/05/2024 REG: V035

KOANUI UNANIMOUS 0408 (P)
 KOANUI TECHNO 3062 (IMP NZL) (PP)
 KOANUI BLUSH 6455 (P)
MAWARRA REAL TIME N038 (AI) (PP)
 MERAWAH MAXIMUM F10 (P)
 MAWARRA IMPULSE 005 (P)
 MAWARRA IMPULSE 002 (P)
 ALLENDALE VAGABOND A74 (AI) (P)
 ALLENDALE WATERHOUSE D1 (PP)
 ALLENDALE MARLINE X185 (P)
MERAWAH BONNIE L77 (AI) (P)
 MERAWAH COMMANDER X91 (AI) (ET) (P)
 MERAWAH BONNIE A10 (P)
 MERAWAH BONNIE X167 (P)



MAY 2026 Hereford GROUP BREEDPLAN														
CE DIR	CE DTRS	GL	BW	200	400	600	Milk	Scrotal	Carcass	EMA	Rib	Rump	Retail	IMF
+0.3	+3.3	-2.3	+4.3	+34	+55	+78	+12	+3.6	+46	+4.7	+2.0	+3.2	-0.2	+1.0
59%	50%	75%	80%	78%	77%	78%	68%	80%	64%	60%	60%	64%	52%	64%

- Heavy pigmented Real Time son that's long bodied, sound with plenty of growth too.
- Dam had bulls sell to \$26,000 and \$18,000 in our 2022 and '23 sales.
- Ideal for heifers - you'll want to keep his daughters.

Purchaser _____ \$ _____

9

TENARU VICEROY V45 (PP)

H

D.O.B: 04/08/2024

REG: V045

MAUNGAHINA OCIDIUM 110043 (P)
 MAUNGAHINA STORM 140077 (IMP NZL) (P)
 MAUNGAHINA PRINCESS 100035 (P)
MAWARRA TWISTER Q228 (AI) (PP)
 ALLENDALE ANZAC E114 (PP)
 MAWARRA SYMPHONY 005 (P)
 MAWARRA SYMPHONY 002 (P)

HARVIE TRAVELER 69T (IMP CAN) (P)
 HARVIE HIGH ROLLER ET 66X (IMP CAN) (AI) (ET) (P)
 HARVIE DAN MS FIREFLY 69S (P)

TENARU FANCY J9 (AI) (TW) (P)
 MERAWAH FRONT PAGE C46 (PP)
 TENARU FANCY F1 (P)
 TENARU FANCY C5 (P)



MAY 2026 Hereford GROUP BREEDPLAN														
CE DIR	CE DTRS	GL	BW	200	400	600	Milk	Scrotal	Carcass	EMA	Rib	Rump	Retail	IMF
-2.2	-9.5	-0.8	+3.1	+28	+42	+61	+21	+2.0	+40	+4.1	-0.8	-1.0	+2.2	-0.7
55%	44%	73%	78%	77%	75%	76%	65%	78%	60%	54%	57%	61%	49%	60%

- Long bodied, strong topped son of Twister.
- Lots of pigmentation, very free moving and attractive.
- Dam has had 10 calves in 10 years and still going.

Purchaser _____

\$ _____

10

MERAWAH SHERWELL V108 (PP)

D.O.B: 11/08/2024

REG: V108

HUNTER LAKES LANCELOT L103 (AI) (ET) (PP)
 YALGOO PEACEMAKER P034 (AI) (PP)
 YALGOO TIGRESS L265 (ET) (P)
TRURO SHERLOCK S188 (S)
 DAYS BLACKBERRY G82 (AI) (P)
 TRURO DAFFODIL M066 (AI) (H)
 TRURO DAFFODIL J180 (P)

ALLENDALE ANZAC E114 (PP)
 MERAWAH HERO L35 (AI) (P)
 MERAWAH IRISH ROSE G33 (AI) (ET) (P)

MERAWAH SHAMROCK P051 (P)
 MERAWAH SPOTLIGHT H35 (AI) (ET) (S)
 MERAWAH SHAMROCK L21 (P)
 MERAWAH SHAMROCK D60 (AI) (P)



MAY 2026 Hereford GROUP BREEDPLAN														
CE DIR	CE DTRS	GL	BW	200	400	600	Milk	Scrotal	Carcass	EMA	Rib	Rump	Retail	IMF
-3.0	+6.2	+0.7	+5.8	+36	+55	+85	+18	+3.4	+50	+3.2	+1.8	+2.8	+0.2	+0.2
54%	42%	74%	78%	77%	75%	76%	63%	78%	60%	54%	56%	60%	48%	59%

- Stud sire prospect by Sherlock out of the dam of the \$40,000 Justice bull we sold in 2022.
- One of the most balanced bulls end to end in the sale.
- Hero daughters are probably our best sire group of females.

Purchaser _____

\$ _____

11**MERAWAH QUEENSTOWN V062 (AI) (P)****D.O.B: 01/07/2024****REG: V062**

ALLENDALE YALLAROI 2 (AI) (TW) (PP)
 ALLENDALE BINGARA K184 (P)
 ALLENDALE CORA C81 (P)
TYCOLAH QUEENSCLIFF N029 (PP)
 WARARBA PARK FIRST CLASS F230 (S)
 TYCOLAH IRISH MAID J140 (P)
 SEVENBARDOT IRISH MAID F39 (P)

BOWEN DIAMANTINA D203 (AI) (PP)
 MERAWAH MARANOA J5 (AI) (P)
 MERAWAH SHAMROCK F61 (P)
MERAWAH BONNIE M124 (P)
 MERAWAH TYPHOON A85 (P)
 MERAWAH BONNIE F166 (AI) (ET) (P)
 MERAWAH BONNIE A10 (P)



MAY 2026 Hereford GROUP BREEDPLAN														
CE DIR	CE DTRS	GL	BW	200	400	600	Milk	Scrotal	Carcass	EMA	Rib	Rump	Retail	IMF
+1.2	-10.8	-1.5	+4.4	+33	+51	+77	+11	+2.8	+53	+1.2	+0.6	+1.1	-0.3	+0.2
60%	48%	77%	79%	78%	77%	78%	68%	79%	66%	60%	62%	65%	53%	65%

- Stout, attractive son of the good breeding Queenscliff bull.
- ½ brothers have sold to \$16,000 in previous sales.
- Dam has had 7 calves in 7 years and still producing well.

Purchaser _____

\$ _____

12**MERAWAH SPARTAN V013 (PP)****D.O.B: 29/04/2024****REG: V013**

C ETF WILDCAT 4248 (ET) (P)
 CHURCHILL GUNPOWDER 657D (IMP USA) (ET) (PP)
 CHURCHILL LADY 002X ET (P)
TRURO SPARTACUS S135 (AI) (PP)
 CENTENNIAL ANZAC L055 (AI) (ET) (PP)
 TRURO UNITY P093 (P)
 TRURO UNITY M156 (H)

KOANUI TECHNO 3062 (IMP NZL) (PP)
 MERAWAH TECHNICIAN P040 (AI) (ET) (PP)
 MERAWAH SHAMROCK J21 (AI) (P)
MERAWAH SHAMROCK S121 (P)
 MERAWAH HERO L35 (AI) (P)
 MERAWAH SHAMROCK P091 (P)
 MERAWAH SHAMROCK J33 (AI) (ET) (P)



MAY 2026 Hereford GROUP BREEDPLAN														
CE DIR	CE DTRS	GL	BW	200	400	600	Milk	Scrotal	Carcass	EMA	Rib	Rump	Retail	IMF
+5.5	+8.9	-2.4	+5.6	+42	+65	+89	+18	+3.7	+59	+3.8	-1.0	-1.6	+2.1	-0.1
53%	41%	71%	77%	75%	73%	75%	61%	76%	57%	51%	53%	57%	43%	57%

- Stout, good looking Spartacus son.
- We bred a lot of heifers to Spartacus and they calved super easy.
- The cows on the bottom side of this pedigree are very strong producers.

Purchaser _____

\$ _____

13

TENARU VALOUR V11 (PP)

H

D.O.B: 03/07/2024

REG: V011

HUNTER LAKES LANCELOT L103 (AI) (ET) (PP)
 YALGOO PEACEMAKER P034 (AI) (PP)
 YALGOO TIGRESS L265 (ET) (P)
TRURO SHERLOCK S188 (S)
 DAYS BLACKBERRY G82 (AI) (P)
 TRURO DAFFODIL M066 (AI) (H)
 TRURO DAFFODIL J180 (P)

KOANUI TECHNO 3062 (IMP NZL) (PP)
 MAWARRA REAL TIME N038 (AI) (PP)
 MAWARRA IMPULSE 005 (P)
TENARU JULIET R23 (P)
 YALGOO BOULDER Z250 (P)
 TENARU JULIET J7 (AI) (P)
 TENARU JULIET E1 (AI) (P)



MAY 2026 Hereford GROUP BREEDPLAN														
CE DIR	CE DTRS	GL	BW	200	400	600	Milk	Scrotal	Carcass	EMA	Rib	Rump	Retail	IMF
+4.8	+5.6	-2.1	+5.2	+29	+49	+72	+18	+4.2	+37	+3.6	+0.3	+0.2	+1.6	+0.8
53%	41%	73%	77%	76%	74%	75%	63%	77%	59%	53%	56%	60%	48%	58%

- Very stylish Sherlock son that's really well made.
- Great skin and hair – his daughters will be keepers.
- Great scrotal typical of the Sherlock progeny.

Purchaser _____

\$ _____

14

MERAWAH SHERWOOD V052 (PP)

H

D.O.B: 25/06/2024

REG: V052

HUNTER LAKES LANCELOT L103 (AI) (ET) (PP)
 YALGOO PEACEMAKER P034 (AI) (PP)
 YALGOO TIGRESS L265 (ET) (P)
TRURO SHERLOCK S188 (S)
 DAYS BLACKBERRY G82 (AI) (P)
 TRURO DAFFODIL M066 (AI) (H)
 TRURO DAFFODIL J180 (P)

MOUNTAIN VALLEY GAMBLER G14 (P)
 TENARU KATHMANDU K1 (AI) (PP)
 TENARU CORISANDE G6 (AI) (PP)
MERAWAH MINERVA N067 (P)
 YALGOO BOULDER Z250 (P)
 MERAWAH MINERVA K5 (AI) (P)
 MERAWAH MINERVA G35 (AI) (ET) (P)



MAY 2026 Hereford GROUP BREEDPLAN														
CE DIR	CE DTRS	GL	BW	200	400	600	Milk	Scrotal	Carcass	EMA	Rib	Rump	Retail	IMF
+16.0	+13.9	-3.2	+1.2	+23	+37	+46	+14	+3.2	+35	+4.4	+0.2	+0.4	+1.6	-0.2
52%	41%	74%	77%	76%	74%	75%	61%	76%	58%	53%	54%	59%	46%	57%

- Carbon copy of the previous lot.
- Dam and grand dam still producing here.
- ½ brother sold to Rob Harris at Coonamble for \$20,000 in our 2023 sale

Purchaser _____

\$ _____

15

MERAWAH SHERWOOD V104 (P)

D.O.B: 08/08/2024 REG: V104

HUNTER LAKES LANCELOT L103 (AI) (ET) (PP)
 YALGOO PEACEMAKER P034 (AI) (PP)
 YALGOO TIGRESS L265 (ET) (P)
TRURO SHERLOCK S188 (S)
 DAYS BLACKBERRY G82 (AI) (P)
 TRURO DAFFODIL M066 (AI) (H)
 TRURO DAFFODIL J180 (P)

DEBARRY OBI WAN (PP)
 EATHORPE NEXT LEVEL N006 (PP)
 DEBARRY PURITY H41 (AI) (ET) (P)

MERAWAH IRISH ROSE R060 (P)
 MERAWAH MARANO J5 (AI) (P)
 MERAWAH IRISH ROSE M129 (P)
 MERAWAH IRISH ROSE F162 (AI) (ET) (P)



MAY 2026 Hereford GROUP BREEDPLAN														
CE DIR	CE DTRS	GL	BW	200	400	600	Milk	Scrotal	Carcass	EMA	Rib	Rump	Retail	IMF
-21.9	-6.4	-1.0	+11.8	+63	+101	+148	+15	+5.3	+88	+4.4	-2.1	-3.0	+2.9	-0.4
52%	40%	74%	77%	76%	74%	75%	62%	77%	58%	53%	55%	59%	46%	58%

- Good solid Sherlock son out of a productive Next Level daughter.
- Genomics has given him a ridiculous BW figure and some equally questionable growth figures from his original Breedplan numbers.
- Not sure how they come up with some of this stuff!
- I would place him much the same as all the other Sherlock sons in the sale performance wise.

Purchaser _____ \$ _____

16

MERAWAH SURE THING V044 (P)

D.O.B: 12/06/2024 REG: V044

HUNTER LAKES LANCELOT L103 (AI) (ET) (PP)
 YALGOO PEACEMAKER P034 (AI) (PP)
 YALGOO TIGRESS L265 (ET) (P)
TRURO SHERLOCK S188 (S)
 DAYS BLACKBERRY G82 (AI) (P)
 TRURO DAFFODIL M066 (AI) (H)
 TRURO DAFFODIL J180 (P)

ALLENDALE ANZAC E114 (PP)
 MERAWAH HERO L35 (AI) (P)
 MERAWAH IRISH ROSE G33 (AI) (ET) (P)

MERAWAH SHAMROCK P091 (P)
 TYCOLAH JOVIAL F77 (PP)
 MERAWAH SHAMROCK J33 (AI) (ET) (P)
 MERAWAH SHAMROCK A87 (AI) (P)



MAY 2026 Hereford GROUP BREEDPLAN														
CE DIR	CE DTRS	GL	BW	200	400	600	Milk	Scrotal	Carcass	EMA	Rib	Rump	Retail	IMF
+2.5	+5.7	+0.0	+3.8	+27	+49	+69	+16	+3.8	+37	+4.8	+0.0	-0.4	+1.0	+1.4
56%	45%	75%	79%	78%	76%	77%	65%	79%	61%	56%	58%	62%	49%	61%

- I like this strong, well made Sherlock son.
- Dam is a beautiful looking Hero daughter.
- Genomics have taken him the other way – go figure!

Purchaser _____ \$ _____



DAM OF LOT 10

17

MERAWAH HIGHTIME V025 (AI) (P) (S)
D.O.B: 15/05/2024 **REG: V025**

- DEBARRY ELLIOTT (P)
- MERAWAH HIGHLIGHT E62 (AI) (P)
- MERAWAH IRISH ROSE B1 (AI) (P)
- MERAWAH HIGH TIME R012 (AI) (S)
- NJW 78P TWENTYTWELVE 190Z (IMP CAN) (AI) (ET) (P)
- MERAWAH SHAMROCK N017 (AI) (ET) (P)
- MERAWAH SHAMROCK J68 (AI) (ET) (P)
- ALLENDAL ANZAC E114 (PP)
- MERAWAH HERO L35 (AI) (P)
- MERAWAH IRISH ROSE G33 (AI) (ET) (P)
- MERAWAH COLLEEN R117 (P)
- MERAWAH MARANO J5 (AI) (P)
- MERAWAH COLLEEN M122 (P)
- MERAWAH COLLEEN G9 (AI) (P)

- Rugged R12 son with a tremendous amount of red meat.
- Lovely skin and hair
- Dam is another of those good Hero daughters.



MAY 2026 Hereford GROUP BREEDPLAN														
CE DIR	CE DTRS	GL	BW	200	400	600	Milk	Scrotal	Carcass	EMA	Rib	Rump	Retail	IMF
-12.1	-10.4	-0.5	+7.3	+46	+83	+118	+19	+3.0	+80	+5.7	+0.6	+0.8	+1.4	+0.1
54%	43%	73%	77%	76%	74%	75%	63%	78%	58%	54%	55%	59%	48%	58%

Purchaser _____

\$ _____

18

MERAWAH SHERLOCK V046 (HPR) (PP)
D.O.B: 19/06/2024 **REG: V046**

- HUNTER LAKES LANCELOT L103 (AI) (ET) (PP)
- YALGOO PEACEMAKER P034 (AI) (PP)
- YALGOO TIGRESS L265 (ET) (P)
- TRURO SHERLOCK S188 (S)
- DAYS BLACKBERRY G82 (AI) (P)
- TRURO DAFFODIL M066 (AI) (H)
- TRURO DAFFODIL J180 (P)
- WIRRUNA JUSTIN J13 (AI) (PP)
- MERAWAH JUSTICE P021 (AI) (P)
- MERAWAH SHAMROCK L46 (AI) (P)
- MERAWAH COMM R121 (HPR) (P)
- MERAWAH HIGHLINE M034 (AI) (P)
- MERAWAH COMM P068 (HPR) (P)
- MERAWAH COMM M020 (HPR) (AI) (P)

- ½ brother sold to Thorn estates in our '25 sale
- Dam is one of my favourite cows.
- Good data set.



MAY 2026 Hereford GROUP BREEDPLAN														
CE DIR	CE DTRS	GL	BW	200	400	600	Milk	Scrotal	Carcass	EMA	Rib	Rump	Retail	IMF
+13.5	+12.7	-5.6	+4.1	+36	+57	+89	+25	+3.7	+61	+7.6	-0.5	-0.6	+3.2	+0.8
53%	41%	73%	77%	76%	74%	75%	62%	77%	59%	53%	55%	60%	45%	58%

Purchaser _____

\$ _____

19**TENARU VERSATILE V14 (P)****D.O.B: 04/07/2024****REG: V014**

HUNTER LAKES LANCELOT L103 (AI) (ET) (PP)
 YALGOO PEACEMAKER P034 (AI) (PP)
 YALGOO TIGRESS L265 (ET) (P)
TRURO SHERLOCK S188 (S)
 DAYS BLACKBERRY G82 (AI) (P)
 TRURO DAFFODIL M066 (AI) (H)
 TRURO DAFFODIL J180 (P)
 KOANUI TECHNO 3062 (IMP NZL) (PP)
 MAWARRA REAL TIME N038 (AI) (PP)
 MAWARRA IMPULSE 005 (P)
TENARU JULIET R10 (P)
 TENARU HARD CORE H24 (P)
 TENARU JULIET L21 (P)
 TENARU JULIET G15 (P)

- Big strong Sherlock son with that hair and skin I like
- Dam is another good Real Time daughter.
- Has an old scar on a hind leg from an injury as a calf.



MAY 2026 Hereford GROUP BREEDPLAN														
CE DIR	CE DTRS	GL	BW	200	400	600	Milk	Scrotal	Carcass	EMA	Rib	Rump	Retail	IMF
-7.2	+1.7	+0.7	+7.9	+49	+75	+101	+21	+3.5	+67	+7.6	-0.3	-0.9	+3.0	+0.4
53%	41%	73%	78%	76%	74%	75%	64%	77%	59%	53%	56%	60%	48%	59%

Purchaser _____

\$ _____

20**MERAWAH SHERMAN V148 (P)****D.O.B: 15/08/2024****REG: V148**

HUNTER LAKES LANCELOT L103 (AI) (ET) (PP)
 YALGOO PEACEMAKER P034 (AI) (PP)
 YALGOO TIGRESS L265 (ET) (P)
TRURO SHERLOCK S188 (S)
 DAYS BLACKBERRY G82 (AI) (P)
 TRURO DAFFODIL M066 (AI) (H)
 TRURO DAFFODIL J180 (P)
 DEBARRY OBI WAN (PP)
 EATHORPE NEXT LEVEL N006 (PP)
 DEBARRY PURITY H41 (AI) (ET) (P)
MERAWAH SHAMROCK R024 (P)
 SEVENBARDOT EVERYTHING H244 (P)
 MERAWAH SHAMROCK L54 (P)
 MERAWAH SHAMROCK F145 (AI) (ET) (P)

- Fancy looking with that good butt profile.
- Good skin and hair type
- Dam is a really good Next Level daughter.



MAY 2026 Hereford GROUP BREEDPLAN														
CE DIR	CE DTRS	GL	BW	200	400	600	Milk	Scrotal	Carcass	EMA	Rib	Rump	Retail	IMF
+4.3	+5.4	-1.6	+6.5	+45	+66	+96	+23	+3.6	+57	+4.9	+0.8	+1.4	+1.4	+0.5
52%	39%	72%	77%	76%	74%	75%	62%	77%	58%	53%	54%	59%	46%	57%

Purchaser _____

\$ _____

21**MERAWAH MASTER KEY V065 (AI) (PP)****D.O.B: 06/07/2024****REG: V065**

SCHU-LAR ON TARGET 22S (IMP USA) (ET) (P)
 KCF BENNETT STRATEGY Z303 ET (P)
 KCF MISS REVOLUTION X338 (ET) (P)
TH MASTERPLAN 183F (IMP USA) (PP)
 FTF PROSPECTOR 145Y (IMP USA) (P)
 TH 512X 145Y DOMINETTE 57B (P)
 TH 122 71I DOMINETTE 512X ET (P)
 ALLENDALE ANZAC E114 (PP)
 MERAWAH HERO L35 (AI) (P)
 MERAWAH IRISH ROSE G33 (AI) (ET) (P)
MERAWAH SHAMROCK Q038 (P)
 VALMA PRESTIGE E60 (P)
 MERAWAH SHAMROCK K58 (AI) (ET) (P)
 MERAWAH SHAMROCK C130 (P)

- Very attractive Masterplan son out of a great cow.
- Will add loads of value to a set of Santa or Angus cows
- Masterplan adds top end EMA and IMF to his progeny with low birth weights.
- DBC



MAY 2026 Hereford GROUP BREEDPLAN														
CE DIR	CE DTRS	GL	BW	200	400	600	Milk	Scrotal	Carcass	EMA	Rib	Rump	Retail	IMF
+0.1	+14.3	+1.9	+5.2	+44	+79	+96	+8	+3.2	+68	+5.0	+1.3	+1.4	+0.3	+1.6
64%	52%	78%	80%	79%	78%	79%	70%	80%	67%	63%	64%	65%	55%	67%

Purchaser _____

\$ _____

22

MERAWAH MASTER KEY V084 (AI) (PP)

D.O.B: 03/08/2024

REG: V084

SCHU-LAR ON TARGET 22S (IMP USA) (ET) (P)
 KCF BENNETT STRATEGY Z303 ET (P)
 KCF MISS REVOLUTION X338 (ET) (P)
TH MASTERPLAN 183F (IMP USA) (PP)
 FTF PROSPECTOR 145Y (IMP USA) (P)
 TH 512X 145Y DOMINETTE 57B (P)
 TH 122 71I DOMINETTE 512X ET (P)
 KOANUI UNANIMOUS 0408 (P)
 KOANUI TECHNO 3062 (IMP NZL) (PP)
 KOANUI BLUSH 6455 (P)
MERAWAH SHAMROCK R072 (AI) (P)
 TYCOLAH JOVIAL F77 (PP)
 MERAWAH SHAMROCK J33 (AI) (ET) (P)
 MERAWAH SHAMROCK A87 (AI) (P)

- Carbon copy of the previous lot.
- Dam and grand dam are still producing here.
- No surprise to see old A87 back in his pedigree.
- Would produce a tremendous set of baldy calves
- DBC



MAY 2026 Hereford GROUP BREEDPLAN														
CE DIR	CE DTRS	GL	BW	200	400	600	Milk	Scrotal	Carcass	EMA	Rib	Rump	Retail	IMF
+5.7	+9.9	-2.8	+2.8	+44	+71	+92	+22	+3.5	+71	+8.1	+2.2	+2.6	+1.4	+1.5
67%	57%	80%	81%	80%	79%	81%	72%	81%	69%	66%	66%	68%	57%	69%

Purchaser

\$

23

MERAWAH MAXIMUS V016 (PP)

D.O.B: 02/05/2024

REG: V016

C ETF WILDCAT 4248 (ET) (P)
 CHURCHILL GUNPOWDER 657D (IMP USA) (ET) (PP)
 CHURCHILL LADY 002X ET (P)
TRURO SPARTACUS S135 (AI) (PP)
 CENTENNIAL ANZAC L055 (AI) (ET) (PP)
 TRURO UNITY P093 (P)
 TRURO UNITY M156 (H)
 DEBARRY OBI WAN (PP)
 EATHORPE NEXT LEVEL N006 (PP)
 DEBARRY PURITY H41 (AI) (ET) (P)
MERAWAH SHAMROCK R146 (P)
 TYCOLAH LYNWOOD H184 (P)
 MERAWAH SHAMROCK M089 (AI) (ET) (P)
 MERAWAH SHAMROCK C130 (P)

- Sleep easy heifer bull by Spartacus.
- ½ brother sold for \$12,000 in our "25 sale.
- Dam goes back to the C130 cow who bred so well here and also bred an Agribition Champion for Remittal Farms in Canada.



MAY 2026 Hereford GROUP BREEDPLAN														
CE DIR	CE DTRS	GL	BW	200	400	600	Milk	Scrotal	Carcass	EMA	Rib	Rump	Retail	IMF
+14.0	+13.9	-2.9	+3.0	+37	+63	+81	+10	+2.9	+59	+5.1	+1.3	+2.1	+0.0	+1.0
52%	40%	71%	77%	75%	73%	75%	61%	76%	58%	51%	53%	58%	44%	57%

Purchaser

\$

24

MERAWAH HIGH TIME V095 (PP)

D.O.B: 03/08/2024

REG: V095

DEBARRY ELLIOTT (P)
 MERAWAH HIGHLIGHT E62 (AI) (P)
 MERAWAH IRISH ROSE B1 (AI) (P)
MERAWAH HIGH TIME R012 (AI) (S)
 NJW 78P TWENTYTWELVE 190Z (IMP CAN) (AI) (ET) (P)
 MERAWAH SHAMROCK N017 (AI) (ET) (P)
 MERAWAH SHAMROCK J68 (AI) (ET) (P)
 CANNAWIGRA COMMANDER Z51 (S)
 MOUNTAIN VALLEY GAMBLER G14 (P)
 MOUNTAIN VALLEY B44 (P)
MERAWAH SHAMROCK R057 (AI) (P)
 NJW 78P TWENTYTWELVE 190Z (IMP CAN) (AI) (ET) (P)
 MERAWAH SHAMROCK M023 (AI) (ET) (P)
 MERAWAH SHAMROCK K13 (AI) (P)

- Attractive, red eyed son of R12
- The Gambler daughters are some of the best doing cows you'll see.
- Grand dam M23 is the dam of lot 5



MAY 2026 Hereford GROUP BREEDPLAN														
CE DIR	CE DTRS	GL	BW	200	400	600	Milk	Scrotal	Carcass	EMA	Rib	Rump	Retail	IMF
+3.0	+4.6	-1.3	+3.5	+30	+49	+68	+17	+2.1	+43	+4.5	-0.8	-0.8	+1.7	-0.1
56%	46%	75%	78%	77%	75%	76%	65%	79%	61%	56%	57%	62%	50%	60%

Purchaser

\$

25

MERAWAH TESLA V120 (PP)

D.O.B: 01/09/2024

REG: V120

KOANUI UNANIMOUS 0408 (P)
 KOANUI TECHNO 3062 (IMP NZL) (PP)
 KOANUI BLUSH 6455 (P)
MERAWAH BIG DEAL T032 (AI) (PP)
 MERAWAH TYPHOON A85 (P)
 MERAWAH SHAMROCK G38 (AI) (ET) (P)
 MERAWAH SHAMROCK A87 (AI) (P)
 DEBARRY OBI WAN (PP)
 EATHORPE NEXT LEVEL N006 (PP)
 DEBARRY PURITY H41 (AI) (ET) (P)
MERAWAH SHAMROCK S38 (P)
 MERAWAH HIGHLIGHT E62 (AI) (P)
 MERAWAH SHAMROCK H37 (AI) (ET) (P)
 MERAWAH SHAMROCK A87 (AI) (P)

- Good looking son of T32 who sold for \$24,000 in our 2024 sale.
- Dam has a double cross of the A87 cow.
- Tremendous carcass with right amount of bone.
- So many herd bull producing sires in this pedigree.



MAY 2026 Hereford GROUP BREEDPLAN														
CE DIR	CE DTRS	GL	BW	200	400	600	Milk	Scrotal	Carcass	EMA	Rib	Rump	Retail	IMF
-5.6	-2.0	+1.2	+6.3	+43	+60	+93	+22	+2.6	+64	+4.0	+0.3	+0.2	+1.5	-0.3
56%	47%	74%	78%	77%	75%	76%	65%	78%	60%	56%	57%	61%	48%	60%

Purchaser

\$

26

TENARU VAPOUR V10 (PP)

D.O.B: 03/07/2024

REG: V010

HUNTER LAKES LANCELOT L103 (AI) (ET) (PP)
 YALGOO PEACEMAKER P034 (AI) (PP)
 YALGOO TIGRESS L265 (ET) (P)
TRURO SHERLOCK S188 (S)
 DAYS BLACKBERRY G82 (AI) (P)
 TRURO DAFFODIL M066 (AI) (H)
 TRURO DAFFODIL J180 (P)
 HARVIE TRAVELER 69T (IMP CAN) (P)
 HARVIE HIGH ROLLER ET 66X (IMP CAN) (AI) (ET) (P)
 HARVIE DAN MS FIREFLY 69S (P)
TENARU JULIET L29 (AI) (P)
 MERAWAH TYPHOON A85 (P)
 TENARU JULIET E1 (AI) (P)
 TENARU JULIET B611 (P)

- Big strong Sherlock son with a ton of red meat.
- ½ brothers are at Lambert PHS and Winvic Past.
- Lacks a little pigment in one eye but that's about all he lacks.
- Would do a great job on some Xbred cows.



MAY 2026 Hereford GROUP BREEDPLAN														
CE DIR	CE DTRS	GL	BW	200	400	600	Milk	Scrotal	Carcass	EMA	Rib	Rump	Retail	IMF
+1.9	+8.4	-1.5	+5.7	+36	+53	+74	+17	+1.6	+48	+4.0	-0.8	-1.1	+1.6	-0.2
54%	42%	73%	78%	77%	75%	76%	65%	78%	60%	55%	56%	61%	49%	60%

Purchaser

\$

27

MERAWAH REX V089 (PP)

D.O.B: 03/08/2024

REG: V089

INJEMIRA ANZAC H006 (PP)
 INJEMIRA ANZAC H006 M187 AI (AI) (PP)
 INJEMIRA PLUM E212 (P)
MOUNTAIN VALLEY REX R113 (PP)
 RAYLEIGH LANCELOT L60 (P)
 MOUNTAIN VALLEY SHAMROCK P049 (P)
 MOUNTAIN VALLEY SHAMROCK K207 (AI) (ET) (P)
 MERAWAH HIGHLIGHT E62 (AI) (P)
 MERAWAH HIGHLINE M034 (AI) (P)
 MERAWAH SHAMROCK H11 (AI) (ET) (P)
MERAWAH SHAMROCK P065 (P)
 NJW 78P TWENTYTWELVE 190Z (IMP CAN) (AI) (ET) (P)
 MERAWAH SHAMROCK M028 (AI) (ET) (P)
 MERAWAH SHAMROCK K13 (AI) (P)

- Very long bodied, big framed son of Rex.
- ½ brother sold for \$24,000 in our 2024 sale.
- Some very strong cows in this guys pedigree.



MAY 2026 Hereford GROUP BREEDPLAN														
CE DIR	CE DTRS	GL	BW	200	400	600	Milk	Scrotal	Carcass	EMA	Rib	Rump	Retail	IMF
-23.3	-4.1	+0.8	+9.2	+46	+74	+109	+22	+1.7	+66	+5.7	-0.4	-0.8	+1.7	+0.5
52%	41%	71%	76%	75%	73%	74%	61%	77%	58%	53%	55%	59%	46%	58%

Purchaser

\$



DAM OF LOT 3



DAM OF LOT 5

28

MERAWAH LAYER V029 (AI) (PP)

H

D.O.B: 15/05/2024

REG: V029

R LEADER 6964 (IMP USA) (PP)
 KOANUI LAYER 6278 (P)
 KOANUI CYNTHIA 6099 (P)
KOANUI LAYER P028 (IMP NZL) (PP)
 KOANUI BARITONE 3600 (P)
 KOANUI REGAL 6629 (P)
 KOANUI REGAL 3111 (S)
 DEBARRY ELLIOTT (P)
 MERAWAH HIGHLIGHT E62 (AI) (P)
 MERAWAH IRISH ROSE B1 (AI) (P)
MERAWAH SHAMROCK M004 (AI) (P)
 TYCOLAH JOVIAL F77 (PP)
 MERAWAH SHAMROCK J33 (AI) (ET) (P)
 MERAWAH SHAMROCK A87 (AI) (P)

- Probably the best doing bull in the sale.
- Easy calving heifer option with some performance and carcass.
- Dam was a great producer - grand dam is still going.



MAY 2026 Hereford GROUP BREEDPLAN														
CE DIR	CE DTRS	GL	BW	200	400	600	Milk	Scrotal	Carcass	EMA	Rib	Rump	Retail	IMF
+8.8	+13.6	-3.1	+1.7	+27	+47	+57	+13	+2.1	+47	+5.2	+3.1	+4.2	-0.1	+1.4
63%	51%	78%	80%	79%	78%	79%	69%	80%	64%	59%	60%	64%	53%	63%

Purchaser _____

\$

29

MERAWAH MASTER KEY V039 (AI) (PP)

H

D.O.B: 23/05/2024

REG: V039

SCHU-LAR ON TARGET 22S (IMP USA) (ET) (P)
 KCF BENNETT STRATEGY Z303 ET (P)
 KCF MISS REVOLUTION X338 (ET) (P)
TH MASTERPLAN 183F (IMP USA) (PP)
 FTF PROSPECTOR 145Y (IMP USA) (P)
 TH 512X 145Y DOMINETTE 57B (P)
 TH 122 71I DOMINETTE 512X ET (P)
 BRAYBOOK CRAFTSMAN C235 (P)
 GLENDAN PARK FULL HOUSE F128 (ET) (P)
 BOWEN RUTH U173 (P)
MERAWAH SHAMROCK K2 (AI) (ET) (P)
 MERAWAH MAXI C40 (AI) (P)
 MERAWAH SHAMROCK F145 (AI) (ET) (P)
 MERAWAH SHAMROCK A87 (AI) (P)

- Very similar to the previous lot.
- Very easy doing bull from a great old cow.
- He'll put some thickness and do ability back in your progeny.
- DBC



SIRE OF LOT 29

MAY 2026 Hereford GROUP BREEDPLAN														
CE DIR	CE DTRS	GL	BW	200	400	600	Milk	Scrotal	Carcass	EMA	Rib	Rump	Retail	IMF
+10.9	+11.3	+2.8	+0.2	+30	+53	+61	+12	+1.7	+37	+2.8	+2.6	+3.0	-1.5	+1.9
64%	52%	77%	80%	79%	78%	79%	71%	80%	67%	63%	64%	66%	55%	67%

Purchaser _____

\$

30

MERAWAH REX V107 (HPR) (PP)

D.O.B: 02/07/2024

REG: V107

INJEMIRA ANZAC H006 (PP)
 INJEMIRA ANZAC H006 M187 AI (AI) (PP)
 INJEMIRA PLUM E212 (P)
MOUNTAIN VALLEY REX R113 (PP)
 RAYLEIGH LANCEALOT L60 (P)
 MOUNTAIN VALLEY SHAMROCK P049 (P)
 MOUNTAIN VALLEY SHAMROCK K207 (AI) (ET) (P)
 NJW 78P TWENTYTWELVE 190Z (IMP CAN) (AI) (ET) (P)
 MERAWAH MILE HIGH M035 (AI) (PP)
 MERAWAH SHAMROCK H37 (AI) (ET) (P)
MERAWAH COMM P070 (HPR) (P)
 MERAWAH HIGHLIGHT E62 (AI) (P)
 MERAWAH COMM M002 (HPR) (AI) (S)
 MERAWAH COMM J42 (HPR) (P)

- Moderate, thick Rex son with heaps of meat.
- Extra pigment and very easy doing.
- The Rex daughters are shaping up really well



MAY 2026 Hereford GROUP BREEDPLAN														
CE DIR	CE DTRS	GL	BW	200	400	600	Milk	Scrotal	Carcass	EMA	Rib	Rump	Retail	IMF
-0.9	+3.9	+0.3	+4.8	+21	+32	+47	+19	+3.1	+25	+5.9	+0.5	+0.7	+2.1	-0.9
52%	41%	70%	76%	75%	73%	74%	62%	76%	58%	52%	54%	58%	45%	57%

Purchaser _____

\$

31

MERAWAH TECHNO V105 (AI) (S)

D.O.B: 08/08/2024

REG: V105

- KOANUI UNANIMOUS 7174 (P)
- KOANUI UNANIMOUS 0408 (P)
- KOANUI GIRLIE 3048 (P)
- KOANUI TECHNO 3062 (IMP NZL) (PP)**
- LEELANDS X-TENSION 293 (P)
- KOANUI BLUSH 6455 (P)
- KOANUI BLUSH 3304 (P)
- NJW 73S M326 TRUST 100W ET (IMP USA) (ET) (P)
- NJW 78P TWENTYTWELVE 190Z (IMP CAN) (AI) (ET) (P)
- NJW BW LADYSPORT DEW 78P ET (P)
- MERAWAH SHAMROCK N023 (AI) (P)**
- MERAWAH HIGHLIGHT E62 (AI) (P)
- MERAWAH SHAMROCK H37 (AI) (ET) (P)
- MERAWAH SHAMROCK A87 (AI) (P)

- The Rex daughters are shaping up really well.
- Big goggle eyed son of old Techno himself.
- Dam's only other son sold to Branga Plains at Walcha for \$18,000.
- Techno is undoubtedly one of the most commercially accepted bulls of recent times.



MAY 2026 Hereford GROUP BREEDPLAN														
CE DIR	CE DTRS	GL	BW	200	400	600	Milk	Scrotal	Carcass	EMA	Rib	Rump	Retail	IMF
-10.8	+2.9	+0.6	+7.5	+39	+66	+95	+18	+3.5	+55	+4.2	-0.7	-1.4	+2.0	+0.2
67%	61%	79%	81%	80%	79%	80%	73%	80%	69%	66%	67%	69%	59%	69%

Purchaser _____ \$ _____

32

MERAWAH SHERMAN V173 (PP)

D.O.B: 12/09/2024

REG: V173

- HUNTER LAKES LANCELOT L103 (AI) (ET) (PP)
- YALGOO PEACEMAKER P034 (AI) (PP)
- YALGOO TIGRESS L265 (ET) (P)
- TRURO SHERLOCK S188 (S)**
- DAYS BLACKBERRY G82 (AI) (P)
- TRURO DAFFODIL M066 (AI) (H)
- TRURO DAFFODIL J180 (P)
- CANNAWIGRA COMMANDER Z51 (S)
- MOUNTAIN VALLEY GAMBLER G14 (P)
- MOUNTAIN VALLEY B44 (P)
- MERAWAH SHAMROCK R008 (AI) (P)**
- TYCOLAH GRAZIER (P)
- MERAWAH SHAMROCK F61 (P)
- MERAWAH SHAMROCK C130 (P)

- Very attractive Sherlock son with that trademark skin and hair.
- ½ brother sold for \$14,000 in our '24 sale.
- Grand dam F61 was the dam of the good breeding Maranoa bull and great grand dam was the \$28,000 C130 cow.



MAY 2026 Hereford GROUP BREEDPLAN														
CE DIR	CE DTRS	GL	BW	200	400	600	Milk	Scrotal	Carcass	EMA	Rib	Rump	Retail	IMF
-5.8	-5.8	-1.4	+7.1	+39	+63	+91	+20	+2.5	+50	+4.9	-1.1	-1.3	+1.6	-0.4
54%	42%	74%	78%	77%	75%	76%	64%	78%	60%	55%	56%	60%	49%	59%

Purchaser _____ \$ _____

33

MERAWAH SHERWOOD V091 (PP)

D.O.B: 03/08/2024

REG: V091

- HUNTER LAKES LANCELOT L103 (AI) (ET) (PP)
- YALGOO PEACEMAKER P034 (AI) (PP)
- YALGOO TIGRESS L265 (ET) (P)
- TRURO SHERLOCK S188 (S)**
- DAYS BLACKBERRY G82 (AI) (P)
- TRURO DAFFODIL M066 (AI) (H)
- TRURO DAFFODIL J180 (P)
- NJW 73S M326 TRUST 100W ET (IMP USA) (ET) (P)
- NJW 78P TWENTYTWELVE 190Z (IMP CAN) (AI) (ET) (P)
- NJW BW LADYSPORT DEW 78P ET (P)
- MERAWAH SHAMROCK P053 (AI) (ET) (P)**
- MERAWAH HIGHLIGHT E62 (AI) (P)
- MERAWAH SHAMROCK H37 (AI) (ET) (P)
- MERAWAH SHAMROCK A87 (AI) (P)

- Probably the most carcass in the sale !
- Dam has had multiple sons at \$20,000 in previous sales.
- The 2012/A87 cross produced cows who's offspring consistently top sales.



MAY 2026 Hereford GROUP BREEDPLAN														
CE DIR	CE DTRS	GL	BW	200	400	600	Milk	Scrotal	Carcass	EMA	Rib	Rump	Retail	IMF
-8.6	+2.5	+2.7	+7.7	+43	+72	+92	+12	+4.2	+57	+8.4	+1.6	+2.2	+1.5	+1.9
56%	45%	75%	79%	78%	76%	77%	65%	79%	61%	56%	58%	62%	48%	61%

Purchaser _____ \$ _____

34**TENARU VOLUME V23 (P)****D.O.B: 18/07/2024****REG: V023**

HUNTER LAKES LANCELOT L103 (AI) (ET) (PP)

YALGOO PEACEMAKER P034 (AI) (PP)

YALGOO TIGRESS L265 (ET) (P)

TRURO SHERLOCK S188 (S)

DAYS BLACKBERRY G82 (AI) (P)

TRURO DAFFODIL M066 (AI) (H)

TRURO DAFFODIL J180 (P)

DEBARRY ELLIOTT (P)

MERAWAH HIGHLIGHT E62 (AI) (P)

MERAWAH IRISH ROSE B1 (AI) (P)

TENARU JULIET G3 (P)

MERAWAH TYPHOON A85 (P)

TENARU JULIET E1 (AI) (P)

TENARU JULIET B611 (P)

- Big long bodied Sherlock son.
- Dam had 11 calves in 11 years !
- Highlight and Typhoon bred awesome daughters.

**SIRE OF LOT 34****MAY 2026 Hereford GROUP BREEDPLAN**

CE DIR	CE DTRS	GL	BW	200	400	600	Milk	Scrotal	Carcass	EMA	Rib	Rump	Retail	IMF
+1.7	-9.2	-0.7	+5.0	+31	+51	+76	+22	+4.3	+44	+2.9	+0.3	-0.3	+0.9	+0.3
53%	42%	73%	77%	76%	74%	75%	65%	77%	59%	53%	56%	60%	49%	58%

Purchaser _____

\$ _____

35**MERAWAH HIGHLIGHT V031 (AI) (P)****D.O.B: 16/05/2024****REG: V031**

BOWEN VINCENT V1 (S)

DEBARRY ELLIOTT (P)

DEBARRY PURITY S67 (AI) (P)

MERAWAH HIGHLIGHT E62 (AI) (P)

KAIRURU ABERDEEN 03 0047 (IMP NZL) (P)

MERAWAH IRISH ROSE B1 (AI) (P)

MERAWAH IRISH ROSE X147 (P)

WIRRUNA JUSTIN J13 (AI) (PP)

MERAWAH JUSTICE P021 (AI) (P)

MERAWAH SHAMROCK L46 (AI) (P)

MERAWAH SHAMROCK R104 (P)

MERAWAH HERO L35 (AI) (P)

MERAWAH SHAMROCK P129 (P)

MERAWAH SHAMROCK H1 (AI) (P)

- Powerful, big volume son of the old cow maker himself .
- We like our Justice daughters – good udders and stay in shape all year round.
- Beautiful skin and hair type with a heap of carcass and red meat.

**JUSTICE P21 - SIRE OF GREAT COWS****MAY 2026 Hereford GROUP BREEDPLAN**

CE DIR	CE DTRS	GL	BW	200	400	600	Milk	Scrotal	Carcass	EMA	Rib	Rump	Retail	IMF
+5.1	+7.2	+0.0	+5.6	+43	+74	+107	+22	+2.2	+74	+4.6	+0.8	+1.4	+0.8	+0.2
62%	53%	77%	81%	79%	78%	79%	71%	80%	65%	60%	61%	65%	55%	64%

Purchaser _____

\$ _____

36**MERAWAH SPARTAN V010 (PP)****D.O.B: 16/04/2024****REG: V010**

C ETF WILDCAT 4248 (ET) (P)

CHURCHILL GUNPOWDER 657D (IMP USA) (ET) (PP)

CHURCHILL LADY 002X ET (P)

TRURO SPARTACUS S135 (AI) (PP)

CENTENNIAL ANZAC L055 (AI) (ET) (PP)

TRURO UNITY P093 (P)

TRURO UNITY M156 (H)

NJW 73S W18 HOMETOWN 10Y (IMP USA) (P)

BOWEN MASTERMIND M314 (AI) (P)

BOWEN RUTH E321 (AI) (P)

MERAWAH SHAMROCK S109 (P)

KOANUI TECHNO 3062 (IMP NZL) (PP)

MERAWAH SHAMROCK P044 (AI) (ET) (P)

MERAWAH SHAMROCK J33 (AI) (ET) (P)

- Very long bodied with plenty of performance.
- Dam is bred in the purple and looks like it.
- Should calve easy and give you lovely replacements.

**SIRE OF LOT 36****MAY 2026 Hereford GROUP BREEDPLAN**

CE DIR	CE DTRS	GL	BW	200	400	600	Milk	Scrotal	Carcass	EMA	Rib	Rump	Retail	IMF
-1.9	+14.3	-3.6	+5.8	+42	+62	+98	+29	+3.1	+62	+4.7	-1.1	-1.7	+2.4	+0.2
54%	43%	71%	77%	75%	74%	75%	63%	76%	58%	52%	54%	58%	44%	58%

Purchaser _____

\$ _____

37**MERAWAH SHERMAN V086 (P)****D.O.B: 03/08/2024****REG: V086**

HUNTER LAKES LANCELOT L103 (AI) (ET) (PP)

YALGOO PEACEMAKER P034 (AI) (PP)

YALGOO TIGRESS L265 (ET) (P)

TRURO SHERLOCK S188 (S)

DAYS BLACKBERRY G82 (AI) (P)

TRURO DAFFODIL M066 (AI) (H)

TRURO DAFFODIL J180 (P)

KOANUI UNANIMOUS 0408 (P)

KOANUI TECHNO 3062 (IMP NZL) (PP)

KOANUI BLUSH 6455 (P)

MERAWAH SHAMROCK R067 (AI) (P)

VALMA PRESTIGE E60 (P)

MERAWAH SHAMROCK K52 (AI) (ET) (P)

MERAWAH SHAMROCK C130 (P)

- Powerhouse Sherlock son.
- Tremendous outlook but still has a ton of red meat in him.
- For those who follow pedigrees (and you should) will see old Techno up front along with the great C130 cow on his bottom side.

**MAY 2026 Hereford GROUP BREEDPLAN**

CE DIR	CE DTRS	GL	BW	200	400	600	Milk	Scrotal	Carcass	EMA	Rib	Rump	Retail	IMF
-7.3	+1.6	-3.3	+8.1	+47	+83	+117	+15	+4.5	+72	+5.6	-1.4	-2.6	+2.9	+0.4
56%	46%	75%	78%	77%	75%	76%	65%	78%	61%	56%	57%	61%	49%	60%

Purchaser

\$

38**MERAWAH TESLA V119 (PP)****D.O.B: 01/09/2024****REG: V119**

KOANUI UNANIMOUS 0408 (P)

KOANUI TECHNO 3062 (IMP NZL) (PP)

KOANUI BLUSH 6455 (P)

MERAWAH BIG DEAL T032 (AI) (PP)

MERAWAH TYPHOON A85 (P)

MERAWAH SHAMROCK G38 (AI) (ET) (P)

MERAWAH SHAMROCK A87 (AI) (P)

DEBARRY OBI WAN (PP)

EATHORPE NEXT LEVEL N006 (PP)

DEBARRY PURITY H41 (AI) (ET) (P)

MERAWAH MINERVA S033 (P)

TYCOLAH GOLD RUSH (S)

MERAWAH MINERVA G40 (AI) (ET) (P)

MERAWAH MINERVA Z37 (AI) (P)

- Good looking, young T32 son out of a nice Next Level daughter.
- T32 sold to Spotswood Grazing at Moura QLD in our 2024 sale.
- Beautiful and square end to end.

**MAY 2026 Hereford GROUP BREEDPLAN**

CE DIR	CE DTRS	GL	BW	200	400	600	Milk	Scrotal	Carcass	EMA	Rib	Rump	Retail	IMF
+6.5	+9.3	+2.1	+2.8	+33	+48	+78	+26	+3.1	+53	+3.0	+1.9	+2.8	+0.1	+0.3
56%	46%	72%	77%	76%	74%	76%	64%	77%	60%	55%	57%	60%	46%	60%

Purchaser

\$

39**MERAWAH DUTTON V157 (PP)****D.O.B: 24/08/2024****REG: V157**

TH 403A 475Z PIONEER 358C (IMP USA) (ET) (P)

TH FRONTIER 174E (IMP USA) (PP)

FTF TRUSTING LADY 312A (P)

MERAWAH DUTTON T080 (AI) (ET) (P)

MERAWAH HIGHLIGHT E62 (AI) (P)

MERAWAH SHAMROCK M013 (AI) (P)

MERAWAH SHAMROCK J20 (AI) (ET) (P)

YAVENVALE JET FIRE J032 (PP)

BOWEN MAGISTRATE M241 (AI) (PP)

BOWEN IRISH GIRL J269 (P)

MERAWAH SHAMROCK T023 (AI) (P)

NJW 78P TWENTYTWELVE 190Z (IMP CAN)

(AI) (ET) (P)

MERAWAH SHAMROCK P157 (AI) (ET) (P)

MERAWAH SHAMROCK J68 (AI) (ET) (P)

- First of the T80 sons and he's a good one !
- Beautifully balanced with a great head and eye.
- His daughters should be especially good.

**MAY 2026 Hereford GROUP BREEDPLAN**

CE DIR	CE DTRS	GL	BW	200	400	600	Milk	Scrotal	Carcass	EMA	Rib	Rump	Retail	IMF
+4.8	+6.9	-1.0	+5.0	+35	+59	+85	+21	+2.6	+47	+3.3	-0.1	-0.3	+1.4	-0.5
54%	43%	73%	77%	75%	74%	75%	63%	76%	59%	54%	55%	59%	45%	59%

Purchaser

\$

40

MERAWAH MASTER KEY V112 (HPR) (PP)

D.O.B: 25/08/24

REG: JDO V112

SCHU-LAR ON TARGET 22S (IMP USA) (ET) (P)
 KCF BENNETT STRATEGY Z303 ET (P)
 KCF MISS REVOLUTION X338 (ET) (P)
TH MASTERPLAN 183F (IMP USA) (PP)
 FTF PROSPECTOR 145Y (IMP USA) (P)
 TH 512X 145Y DOMINETTE 57B (P)
 TH 122 71I DOMINETTE 512X ET (P)

DAYS ROBIN HOOD H38
 HUNTER LAKES LANCELOT L013
 ALLENDALE FANCY U5

MERAWAH COMM S097
 MERAWAH TYPHOON A85
 MERAWAH COMM M100
 MERAWAH COMM H38

- Big framed 183F son who's got some punch to him.
- Dam is a good L103 daughter who doesn't miss.
- Big hiped with a strong top and lots of carcass.
- DBF



Hereford GROUP BREEDPLAN – Sires EBV's														
CE DIR	CE DTRS	GL	BW	200	400	600	Milk	Scrotal	Carcass	EMA	Rib	Rump	Retail	IMF
+5.1	+12.1	+0.9	+2.4	+41	+79	+94	+16	+4.0	+63	+7.0	+2.6	+2.3	+0.2	+2.8
90%	76%	99%	99%	98%	98%	98%	94%	98%	93%	90%	90%	91%	84%	92%

Purchaser _____

\$ _____

41

MERAWAH REX V165 (PP)

D.O.B: 15/09/2024

REG: V165

INJEMIRA ANZAC H006 (PP)
 INJEMIRA ANZAC H006 M187 AI (AI) (PP)
 INJEMIRA PLUM E212 (P)
MOUNTAIN VALLEY REX R113 (PP)
 RAYLEIGH LANCELOT L60 (P)
 MOUNTAIN VALLEY SHAMROCK P049 (P)
 MOUNTAIN VALLEY SHAMROCK K207 (AI) (ET) (P)

KARINA CHERRY Z8 (PP)
 TYCOLAH JOVIAL F77 (PP)
 TYCOLAH COUNTESS W48 (P)

MERAWAH SHAMROCK J33 (AI) (ET) (P)
 HF 4L BEYOND 36N (IMP CAN) (PP)
 MERAWAH SHAMROCK A87 (AI) (P)
 MERAWAH SHAMROCK W99 (AI) (P)

- Good young , red eyed son of R113.
- Stout and square from end to end - he'd gain weight in a car park !
- Dam is the only J model left here and still going strong.



MAY 2026 Hereford GROUP BREEDPLAN														
CE DIR	CE DTRS	GL	BW	200	400	600	Milk	Scrotal	Carcass	EMA	Rib	Rump	Retail	IMF
-13.4	-6.1	+1.4	+5.7	+30	+46	+64	+21	+1.5	+41	+5.3	+0.8	+1.1	+1.5	+0.3
55%	44%	73%	78%	77%	75%	76%	66%	79%	61%	56%	57%	62%	49%	60%

Purchaser _____

\$ _____

42

MERAWAH MASTER KEY V144 (AI) (PP)

D.O.B: 12/08/2024

REG: V144

SCHU-LAR ON TARGET 22S (IMP USA) (ET) (P)
 KCF BENNETT STRATEGY Z303 ET (P)
 KCF MISS REVOLUTION X338 (ET) (P)
TH MASTERPLAN 183F (IMP USA) (PP)
 FTF PROSPECTOR 145Y (IMP USA) (P)
 TH 512X 145Y DOMINETTE 57B (P)
 TH 122 71I DOMINETTE 512X ET (P)

MOUNTAIN VALLEY GAMBLER G14 (P)
 TENARU KATHMANDU K1 (AI) (PP)
 TENARU CORISANDE G6 (AI) (PP)

MERAWAH SHAMROCK N110 (P)
 MERAWAH TYPHOON A85 (P)
 MERAWAH SHAMROCK G38 (AI) (ET) (P)
 MERAWAH SHAMROCK A87 (AI) (P)

- Big, strong, high volume 183F son.
- Will give you heavy steers and productive cows.
- Grand dam, G38, is the dam of M. Big Deal T32 – sire of lot 25 and 38 in this sale.
- DBC



MAY 2026 Hereford GROUP BREEDPLAN														
CE DIR	CE DTRS	GL	BW	200	400	600	Milk	Scrotal	Carcass	EMA	Rib	Rump	Retail	IMF
-14.1	-6.6	+2.3	+6.1	+36	+67	+91	+10	+3.2	+52	+4.6	+1.3	+1.5	+0.6	+0.9
65%	53%	79%	81%	80%	79%	80%	70%	80%	68%	64%	64%	66%	56%	67%

Purchaser _____

\$ _____

43**MERAWAH HIGH TIME V072 (PP)****H****D.O.B: 24/07/2024****REG: V072**

DEBARRY ELLIOTT (P)
 MERAWAH HIGHLIGHT E62 (AI) (P)
 MERAWAH IRISH ROSE B1 (AI) (P)
MERAWAH HIGH TIME R012 (AI) (S)
 NJW 78P TWENTYTWELVE 190Z (IMP CAN) (AI) (ET) (P)
 MERAWAH SHAMROCK N017 (AI) (ET) (P)
 MERAWAH SHAMROCK J68 (AI) (ET) (P)
 KOANUI UNANIMOUS 0408 (P)
 KOANUI TECHNO 3062 (IMP NZL) (PP)
 KOANUI BLUSH 6455 (P)
MERAWAH COLLEEN ROO1 (AI) (P)
 YALGOO BOULDER Z250 (P)
 MERAWAH COLLEEN J32 (AI) (P)
 MERAWAH COLLEEN G9 (AI) (P)

- Short marked, pigmented son of R12.
- The Techno daughters get the job done.
- Ideal for heifers.

**GRAND DAM OF LOT 43****MAY 2026 Hereford GROUP BREEDPLAN**

CE DIR	CE DTRS	GL	BW	200	400	600	Milk	Scrotal	Carcass	EMA	Rib	Rump	Retail	IMF
+1.0	-1.8	-1.7	+2.3	+27	+47	+61	+26	+3.4	+41	+3.5	+0.7	+1.0	+1.4	-0.1
57%	48%	75%	77%	77%	75%	76%	65%	78%	61%	56%	57%	61%	49%	60%

Purchaser

\$

44**MERAWAH LANCER V158 (AI) (PP)****H****D.O.B: 27/08/2024****REG: V158**

ALLENDALE WATERHOUSE D1 (PP)
 DAYS ROBIN HOOD H38 (AI) (ET) (PP)
 ALLENDALE FANCY U5 (AI) (P)
HUNTER LAKES LANCELOT L103 (AI) (ET) (PP)
 SOUTH BUKALONG WALLACE 2 (P)
 HUNTER LAKES FANCY F7 (AI) (P)
 ALLENDALE FANCY D24 (AI) (P)
 TH 89T 755T STOCKMAN 475Z (P)
 TH 403A 475Z PIONEER 358C (IMP USA) (ET) (P)
 TH 71U 17Y RITA 403A (P)
MERAWAH SHAMROCK T038 (AI) (P)
 MERAWAH HIGHLIGHT E62 (AI) (P)
 MERAWAH SHAMROCK H37 (AI) (ET) (P)
 MERAWAH SHAMROCK A87 (AI) (P)

- Handy heifer option by L103.
- His Frontier dam was about as good a two year old as you'll ever see.
- He got lost for a couple of months and weaned himself early but you'd never know it now.

**DAM OF LOT 44****MAY 2026 Hereford GROUP BREEDPLAN**

CE DIR	CE DTRS	GL	BW	200	400	600	Milk	Scrotal	Carcass	EMA	Rib	Rump	Retail	IMF
+6.9	+11.0	-0.1	+3.0	+27	+43	+63	+21	+3.5	+40	+4.1	+1.8	+2.9	+0.4	+1.1
61%	52%	77%	80%	79%	78%	79%	70%	80%	65%	61%	62%	65%	54%	65%

Purchaser

\$

45**MERAWAH HIGH TIME V116 (S)****H****D.O.B: 01/09/2024****REG: V116**

DEBARRY ELLIOTT (P)
 MERAWAH HIGHLIGHT E62 (AI) (P)
 MERAWAH IRISH ROSE B1 (AI) (P)
MERAWAH HIGH TIME R012 (AI) (S)
 NJW 78P TWENTYTWELVE 190Z (IMP CAN) (AI) (ET) (P)
 MERAWAH SHAMROCK N017 (AI) (ET) (P)
 MERAWAH SHAMROCK J68 (AI) (ET) (P)
 MERAWAH HIGHLIGHT E62 (AI) (P)
 MERAWAH HIGHLINE M034 (AI) (P)
 MERAWAH SHAMROCK H11 (AI) (ET) (P)
MERAWAH SHAMROCK P063 (P)
 NJW 78P TWENTYTWELVE 190Z (IMP CAN) (AI) (ET) (P)
 MERAWAH SHAMROCK M033 (AI) (P)
 MERAWAH SHAMROCK H1 (AI) (P)

- Solid, high volume son of R12.
- Dam is always in good shape.
- Line bred to the old NJW 2012 bull.

**SIRE OF LOT 45****MAY 2026 Hereford GROUP BREEDPLAN**

CE DIR	CE DTRS	GL	BW	200	400	600	Milk	Scrotal	Carcass	EMA	Rib	Rump	Retail	IMF
+0.5	-0.1	-1.0	+4.3	+42	+65	+90	+23	+2.5	+68	+2.9	+0.5	+0.5	+1.5	-0.7
57%	47%	76%	79%	78%	76%	78%	66%	80%	61%	57%	58%	62%	49%	61%

Purchaser

\$

46

TENARU VIBRANT V9 (PP)

D.O.B: 03/07/2024

REG: V009

DAYS ELABORATE J59 (AI) (P)
 GRATHLYN HOLYFIELD N019 (AI) (P)
 GRATHLYN JEWESS L004 (AI) (PP)
ARMADA ROFF (PP)
 YAVENVALE GURU G031 (PP)
 ARMADA ESTHER M083 (AI) (P)
 ARMADA ESTHER J90 (P)
 MAWARRA INXS (AI) (P)
 TENARU HARD CORE H24 (P)
 TENARU CHERRY RIPE B2 (P)
TENARU JULIET L14 (P)
 MERAWAH HIGHLIGHT E62 (AI) (P)
 TENARU JULIET H4 (AI) (P)
 TENARU JULIET B611 (P)

- Big, growthy son of Roff
- The H24 bull was only here for a short burst before heading out to his new owners but he bred some stand out daughters.
- Solid set of data.



MAY 2026 Hereford GROUP BREEDPLAN														
CE DIR	CE DTRS	GL	BW	200	400	600	Milk	Scrotal	Carcass	EMA	Rib	Rump	Retail	IMF
+5.4	-3.2	-1.6	+5.8	+34	+58	+84	+11	+3.2	+52	+5.0	+0.7	+1.3	+1.2	+0.9
53%	42%	73%	77%	76%	74%	76%	63%	78%	60%	54%	56%	61%	49%	59%

Purchaser

\$

47

MERAWAH SHERMAN V099 (HPR) (PP)

D.O.B: 04/08/2024

REG: V099

HUNTER LAKES LANCELOT L103 (AI) (ET) (PP)
 YALGOO PEACEMAKER P034 (AI) (PP)
 YALGOO TIGRESS L265 (ET) (P)
TRURO SHERLOCK S188 (S)
 DAYS BLACKBERRY G82 (AI) (P)
 TRURO DAFFODIL M066 (AI) (H)
 TRURO DAFFODIL J180 (P)
 MOUNTAIN VALLEY GAMBLER G14 (P)
 TENARU KATHMANDU K1 (AI) (PP)
 TENARU CORISANDE G6 (AI) (PP)
MERAWAH COMM P024 (HPR) (AI) (P)
 HF 4L BEYOND 36N (IMP CAN) (PP)
 MERAWAH COMM L30 (HPR) (AI) (TW) (P)
 MERAWAH COMM G26 (HPR) (P)

- Attractive Sherlock son with a lovely outlook to him.
- Dam is a good producing, nice uddered daughter of Katmandu.
- ½ brother sold for \$10,000 in our '25 sale.



MAY 2026 Hereford GROUP BREEDPLAN														
CE DIR	CE DTRS	GL	BW	200	400	600	Milk	Scrotal	Carcass	EMA	Rib	Rump	Retail	IMF
+7.8	-5.6	-1.5	+4.3	+33	+47	+68	+18	+3.0	+43	+3.0	-0.7	-1.6	+1.8	+0.1
54%	42%	74%	78%	77%	75%	76%	63%	78%	60%	54%	56%	60%	48%	59%

Purchaser

\$

48

MERAWAH SHERMAN V100 (P)

D.O.B: 04/08/2024

REG: V100

HUNTER LAKES LANCELOT L103 (AI) (ET) (PP)
 YALGOO PEACEMAKER P034 (AI) (PP)
 YALGOO TIGRESS L265 (ET) (P)
TRURO SHERLOCK S188 (S)
 DAYS BLACKBERRY G82 (AI) (P)
 TRURO DAFFODIL M066 (AI) (H)
 TRURO DAFFODIL J180 (P)
 WIRRUNA FLETCHER F214 (P)
 WIRRUNA KATNOOK K74 (AI) (P)
 WIRRUNA VICTORIA G7 (AI) (P)
MERAWAH BONNIE R036 (AI) (P)
 ALLENDALE ANZAC E114 (PP)
 MERAWAH BONNIE L47 (AI) (P)
 MERAWAH BONNIE F160 (AI) (ET) (P)

- Tremendous carcass on this young Sherlock son.
- He lacks pigment in one eye but his muscle content and overall carcass merit meant I had to put him in.
- Would do a stellar job on slabby Angus or X bred cows.



MAY 2026 Hereford GROUP BREEDPLAN														
CE DIR	CE DTRS	GL	BW	200	400	600	Milk	Scrotal	Carcass	EMA	Rib	Rump	Retail	IMF
-7.1	-0.1	+0.2	+6.6	+42	+62	+85	+17	+3.2	+56	+9.0	-0.7	-1.6	+3.8	+1.3
57%	46%	76%	79%	78%	76%	77%	65%	79%	62%	58%	59%	62%	49%	62%

Purchaser

\$

49

MERAWAH SHERLOCK V076 (AI) (P)

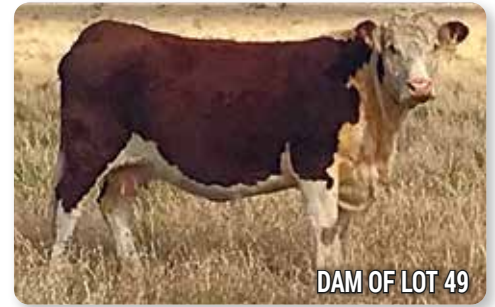
D.O.B: 16/07/2024

REG: V076

HUNTER LAKES LANCELOT L103 (AI) (ET) (PP)
 YALGOO PEACEMAKER P034 (AI) (PP)
 YALGOO TIGRESS L265 (ET) (P)
TRURO SHERLOCK S188 (S)
 DAYS BLACKBERRY G82 (AI) (P)
 TRURO DAFFODIL M066 (AI) (H)
 TRURO DAFFODIL J180 (P)

 DEBARRY ELLIOTT (P)
 MERAWAH HIGHLIGHT E62 (AI) (P)
 MERAWAH IRISH ROSE B1 (AI) (P)
MERAWAH SHAMROCK H37 (AI) (ET) (P)
 HF 4L BEYOND 36N (IMP CAN) (PP)
 MERAWAH SHAMROCK A87 (AI) (P)
 MERAWAH SHAMROCK W99 (AI) (P)

- Big growthy Sherlock son out of a great old cow.
- Gets picked by his mates so might look a little underdone.
- Ugly bulls often breed the best daughters in my experience if they're bred right to begin with !



MAY 2026 Hereford GROUP BREEDPLAN														
CE DIR	CE DTRS	GL	BW	200	400	600	Milk	Scrotal	Carcass	EMA	Rib	Rump	Retail	IMF
+2.9	+2.5	+0.6	+5.1	+38	+56	+82	+26	+4.9	+48	+1.9	-0.1	-0.7	+1.2	+0.1
56%	45%	77%	79%	78%	76%	77%	67%	79%	62%	57%	58%	62%	50%	61%

Purchaser _____

\$

50

TENARU VENDETTA V40 (P) (S)

D.O.B: 03/08/2024

REG: V040

HUNTER LAKES LANCELOT L103 (AI) (ET) (PP)
 YALGOO PEACEMAKER P034 (AI) (PP)
 YALGOO TIGRESS L265 (ET) (P)
TRURO SHERLOCK S188 (S)
 DAYS BLACKBERRY G82 (AI) (P)
 TRURO DAFFODIL M066 (AI) (H)
 TRURO DAFFODIL J180 (P)

 ALLENDALE ANZAC E114 (PP)
 MERAWAH ANZAC M099 (AI) (ET) (PP)
 MERAWAH MINERVA G35 (AI) (ET) (P)
TENARU CORISANDE Q22 (P)
 MOUNTAIN VALLEY GAMBLER G14 (P)
 TENARU CORISANDE J13 (AI) (P)
 TENARU CORISANDE Z1 (P)

- Last of the Sherlock sons in this sale.
- Dam has old Anzac E114 and Gambler in there.
- Good footed and put together right.



MAY 2026 Hereford GROUP BREEDPLAN														
CE DIR	CE DTRS	GL	BW	200	400	600	Milk	Scrotal	Carcass	EMA	Rib	Rump	Retail	IMF
-6.2	-1.6	+1.5	+6.6	+42	+61	+87	+13	+2.3	+49	+2.9	-0.9	-1.4	+1.7	-0.5
54%	43%	74%	78%	77%	75%	76%	64%	77%	60%	54%	57%	61%	49%	60%

Purchaser _____

\$

51

MERAWAH MASTER KEY V038 (AI) (PP)

D.O.B: 17/05/2024

REG: V038

SCHU-LAR ON TARGET 22S (IMP USA) (ET) (P)
 KCF BENNETT STRATEGY Z303 ET (P)
 KCF MISS REVOLUTION X338 (ET) (P)
TH MASTERPLAN 183F (IMP USA) (PP)
 FTF PROSPECTOR 145Y (IMP USA) (P)
 TH 512X 145Y DOMINETTE 57B (P)
 TH 122 71I DOMINETTE 512X ET (P)

 ALLENDALE ANZAC E114 (PP)
 MERAWAH HERO L35 (AI) (P)
 MERAWAH IRISH ROSE G33 (AI) (ET) (P)
MERAWAH SHAMROCK Q073 (TW) (P)
 GLENDAN PARK FULL HOUSE F128 (ET) (P)
 MERAWAH SAMROCK K4 (AI) (ET) (P)
 MERAWAH SHAMROCK F145 (AI) (ET) (P)

- Ideal heifer option on Angus or bos indicus influenced cattle
- Dam is an excellent Hero daughter
- DBC



MAY 2026 Hereford GROUP BREEDPLAN														
CE DIR	CE DTRS	GL	BW	200	400	600	Milk	Scrotal	Carcass	EMA	Rib	Rump	Retail	IMF
+7.3	+8.6	+0.7	+1.6	+35	+64	+78	+23	+3.2	+53	+4.9	+3.0	+3.6	-0.6	+1.7
64%	52%	77%	80%	79%	78%	79%	70%	80%	67%	63%	63%	65%	55%	67%

Purchaser _____

\$

100

1926

YEARS OF
HEREFORDS

2026



Merawah stud cows 1955

ALGETY AND COMPANY LIMITED
(INCORPORATED IN ENGLAND)
15 BENT STREET
SYDNEY 28th August, 1951.

TO WHOM IT MAY CONCERN:

Miss Judy Doyle wishes to visit America with a view to purchasing a Poll Hereford Bull for the J. H. Doyle Estate Company Pty. Ltd., "Merawah", Boggabilla. This Company is a leading breeder of Stud Poll Hereford Cattle, and Miss Doyle, as well as being a shareholder, has been associated and interested in the "Merawah" Stud since childhood. She is an excellent judge of good Cattle and capable of selecting a Bull suitable for Australian conditions, and one that will be an acquisition to the Poll Hereford Breed in this country.

The only country in the World from which we in Australia may procure Poll Hereford Cattle is America - they are an American Breed, therefore, to get new blood it is absolutely necessary to visit that country. And, in this country, where the breeding of Poll Hereford Cattle is comparatively new, fresh blood is absolutely essential to the improvement of this important breed of Cattle, which is rapidly gaining popularity in Australia.

There are hundreds of Poll Hereford Studs scattered throughout the length and breadth of the United States and Canada, and whilst Miss Doyle will not wish to visit every one of them, she will need to see many of the Studs. She gets the type of Bull she is looking for commensurate with Australian conditions. She has learned from the Secretary of the Hereford Society in Kansas City, also Mr. Frank, an expert in Chicago, where the best Bull is likely to be found.

Miss Doyle is a young Hereford Breeder, and the success she gains during this visit will be a great benefit to the breed.



Belle Canadian US National champion 1936 Imported to Merawah 1937. Dam of M.Canadian

Merawah Canadian - foundation sire 1937



Loading bulls to take to the train for Brisbane Show 1939



SALE SUMMARY BULLS

OFFERED _____

SOLD _____

TOP PRICE _____

AVERAGE _____

**THANKYOU FOR YOUR SUPPORT
OF THE MERAWAH PROGRAM**

IF YOU HAVE ANY PROBLEMS
PLEASE CONTACT US ON **0428 140 175**

TERMS & CONDITIONS OF SALE

VENDOR

1. The expression "the vendor" means Merawah Poll Herefords and Tenaru Poll Herefords, Boggabilla NSW.

THE SALE

2. The highest bidder above the reserve price shall be the purchaser and if any dispute shall arise as to the bidding, it shall be decided by the auctioneer, whose decision shall be final. The bidding from time to time shall be regulated by the auctioneer and no bid shall be retracted.
3. The auctioneer expressly reserves the right to refuse any bid without indicating any grounds or reasons therefore.
4. The Auction shall be conducted on the basis that the bid price shall be exclusive of Goods and Services Tax (GST). GST shall be added after the fall of the hammer for those sales subject to GST.
5. The purchaser, if more than one shall be jointly and severally bound by the terms and conditions and shall jointly and severally carried out and perform the same.

RISK

6. All lots shall be at the risk of the purchaser on the fall of the hammer.

PAYMENT

7. All lots shall be paid for in cash immediately on the fall of the hammer and prior to delivery, but in the event of delivery being made or possession being obtained by the purchaser or his/her representative prior to payment in full of the purchase money shall have been made (and in the case of payment by cheque or other negotiable instrument such payment shall be deemed to have been made only when clearance of such cheque or other negotiable instrument shall have been effected) the purchaser shall hold lots purchased as bailee only for the vendor.
8. All Payments of purchase money shall be made to the clearing agent.

DEFAULT

9. If the purchaser shall neglect or fail to comply with any of the above conditions, any lots purchased by him/her may be immediately re-sold by public auction or private contract, with or without notice at the risk of the purchaser, who will be held responsible for all loss and expenses arising out of such resale and shall not participate in nay profit accruing there from.

AGENTS

10. The auctioneer is to be considered merely as an agent of the vendor/s and all disputes from defect of title, breach of any warranty or otherwise, the purchaser and the vendor/s must adjust the matter between themselves and no lot is to be returned to the auctioneer.

INJURY TO PERSON OR PROPERTY

11. All persons who attend the sale do so at their own risk and the vendor assumes no liability, legal or otherwise, for any accident which may occur.

LIABILITY

12. The owners, employees, sale staff and representatives accept no liability to accidents that occur, although these are rare at cattle sales, any persons attending the sale do so at their own risk.

MISCELLANEOUS

13. Any typographical errors that occur in this catalogue, the vendor/s assumes no liability, legal or otherwise.
14. All information supplied in this catalogue is to the vendors best knowledge.

2025 TOP SELLERS



LOT
4

SOLD FOR \$32,000

MERAWAH RICARDO U30

Sold to N & R James Wandoan QLD



LOT
19

SOLD FOR \$28,000

TENARU UNIONTOWN U17

Sold to Bogong Past. Condoblin NSW



LOT
40

SOLD FOR \$20,000

MERAWAH COMPASS U172

Sold to Bogong Past. Condoblin NSW



LOT
3

SOLD FOR \$18,000

MERAWAH TECHEAD U15

Sold to Supple Herefords, Guyra NSW



LOT
12

SOLD FOR \$18,000

MERAWAH HIGH RISE U135

Sold to CA Flower, Surat QLD



LOT
30

SOLD FOR \$18,000

MERAWAH SUCCESS U145

Sold to Undoolya Stn Alice Springs NT



Merawah
POLL HEREFORDS

ANNUAL BULL SALE
14 July 2020
BOGGABILLA NSW

Merawah
POLL HEREFORDS

ANNUAL BULL SALE
13 July 2021
BOGGABILLA NSW

Merawah
POLL HEREFORDS

ANNUAL BULL SALE
19 July 2022
BOGGABILLA NSW

MERAWAH
Poll Herefords

ANNUAL BULL SALE
BOGGABILLA NSW
18 JULY
2023

MERAWAH
Poll Herefords

ANNUAL BULL SALE
BOGGABILLA NSW
16 JULY
2024

MERAWAH
Poll Herefords

ANNUAL BULL SALE
BOGGABILLA NSW
15 JULY
2025



*Thank you
for your support*



THE PROFITABLE KIND