

Welcome
to our 24th On Property Bull Sale

TYCOLAH



THE COTTAGE

**Poll Hereford and
Braford Studs
FRIDAY 18TH JULY 2025 AT 1PM**



www.tycolah.com.au



Lot 1
TYCOLAH WAYFARER
U121



Lot 3
TYCOLAH WOODBINE
U123



Lot 20
TYCOLAH WEATHERMAN
U116



Lot 21
TYCOLAH WAR CLOUD
U114



Lot 2
OAK DOWNS
U102



Lot 4
TYCOLAH WALHALLOW
U141



Tycolah 24th Sale
FRIDAY 18TH JULY 2025
*On offer 50/2023 Drop Bulls Hereford Bulls
& 3 Lahford Bulls*

THE COTTAGE
offering 4/2023 Drop Poll Hereford Bulls

*Sale to commence promptly at 1pm
Online and on property video open cry auction*

Contacts

Steve: 02 6783 2278 / 0457 233 777

Ben: 0419 832 270

Email: info@tycolah.com.au www.tycolah.com.au

Michael: 0429 034 578 Dave: 0428 294 977 or Bill: 02 6783 2268

Open Day Friday June 27th for pre-sale inspections



***Sale conducted under
The Australian Livestock & Property
Agents Association (ALPA)
Livestock Auction Terms and Conditions of
Sale which will be on display on Sale day.***

Agents

John Settree

Stud Stock Dubbo, NSW

Tel: 0408 297 368

john.settree@nutrien.com.au

Tim Woodham

Stud Stock, VIC

Tel: 0436 015 115

Matt Campion

NSW

Tel: 0437 290 435

Peter Godbolt

Stud Stock Albury, VIC

Tel: 0457 591 929

Howard Carter

Barraba, NSW

Tel: 0438 853 965

Auctioneer: Paul Dooley Tel: 0458 662 646

*****Sale Videos will be available online Mid-June Auctions Plus*****



Australia's Livestock Marketplace



AuctionsPlus

How to Register and Bid on AuctionsPlus

1

Go to www.auctionsplus.com.au to register at least 48 hours before the sale.

2

Select “**Sign Up**” in the top right hand corner.

3

Fill out your name, mobile number, email address and create a password.

4

Go to your emails and confirm the account.

5

Return to AuctionsPlus and log in.

6

Select “**Dashboard**” and then select “**Request Approval to Buy**”.

7

Fill in buyer details and once completed go back to Dashboard.

8

Complete buyer induction module (approx. 30 minutes).

9

AuctionsPlus will email you to let you know that your account has been approved.

10

Log in on sale day and connect to auction.

11

Bid using the two-step process – unlock the bid button and bid at that price.

12

If you are successful, the selling agent will contact you post sale to organise delivery and payment.

For more information please contact us on:

Phone: (02) 9262 4222

Email: info@auctionsplus.com.au

SALE INFORMATION

SALE DAY: All bulls will be sold via video and open cry auction with online bidding through Auctions Plus.

INSPECTION: We encourage buyers to inspect our cattle prior to the sale. This gives us an opportunity to assist you with your selections for your herds. Our Stud will be open on Friday the 27th June from 9.30am to 4pm or they will be available for inspection prior to the sale by phoning us or agents to make an appointment for viewing.

The Bulls will be penned and available for inspection on sale day from 10.00am.

SUPPLEMENTARY SHEETS: Will be available on Sale Day, online on our webpage or Auctions Plus.

You can also email us for Supplementary sheets at info@tycolah.com.au

FOOD/DRINKS

A light luncheon will be available for purchase provided by St Joseph's P&F.

TRANSFERS/PRIVACY

All bulls registered will be transferred to successful purchasers if you notify us on the sale instruction sheet. Please indicate on the instruction slip your details for transfer. Please include your member number.

Privacy Information: For Herefords Australia to process the transfer of a registered animal in this catalogue, the vendor will need to provide certain information to Herefords Australia and the buyer consents to the collection and disclosure of that information by Herefords Australia in certain circumstances. If the buyer does not wish for their information to be stored and disclosed by Herefords Australia, the buyer must inform us, and a copy of the animal's pedigree only will be sent to successful purchasers. If you tick yes, we will consider you have consented to the disclosure of such information.

BIO-SECURITY

Tycolah and The Cottage studs have a Transitional score of 6 and we have Bio-security plans

REBATE:

A Rebate of 4% will be available to outside agents who attend the sale with or on behalf of their client(s) and settle within seven days of the sale. Agent is to co-sign the Buyers instruction slip. A rebate of 2% will be available to outside agents not attending the sale, but who introduce buyers in writing (fax/email/text) not later than 12 hours prior to the sale and make settlement on their behalf within 7 days of the sale.

INSURANCE:

There is no vendor insurance; it will be the responsibility of the purchaser to insure their animal(s). An Insurance Rep will be available on sale day or discuss with your agent.

ACCOMMODATION:

BARRABA

The Playhouse Hotel:

02 6782 1109 or 0427 821 344 (See advert)

Barraba Caravan Park/cabins:

Phone Richo 02 6782 1818

Andy's Backpackers:

02 6782 1916 (Ensuites available)

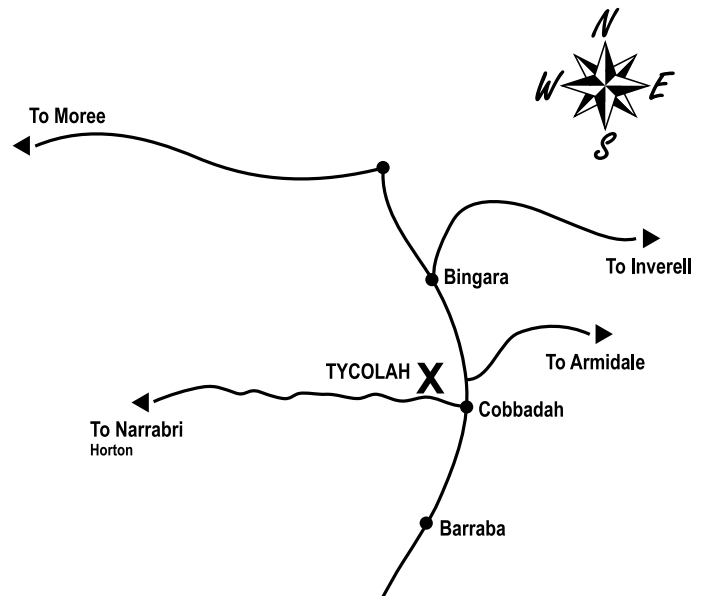
Hotels: Commercial 02 6782 1023

Barraba Motel: 02 6782 155

BINGARA

Fossickers Inn Motel: 02 6724 1373

Hotels: 02 6724 1629 or 02 6724 1139



Tycolah is situated on the Horton Rd 1.04kms west from B95 Road which is the Barraba Bingara Road (Fossickers Way). The turn off on B95 is 18.3kms North from Barraba or 44.2Kms South from Bingara.

SALE DAY SAFETY AND DISCLAIMER

The Vendors, Family, Sale staff and representatives accept no liability for accidents that may occur, although these are rare at cattle sales, any persons attending do so at their own risk. Children are NOT allowed in the cattle pens/paddocks. Please call upon any of the agents or vendors should you require an escort to inspect the cattle. While Herefords are renowned for their docility remember the quietest animal can be unpredictable when in a strange environment.

While all care has been taken in the preparation of this catalogue Tycolah and The Cottage accept no responsibility for any errors or omissions contained in this publication.

Mobile phone service is non-existent at Tycolah we have limited Wi-Fi calling available for the sale via satellite. We ask all attending the sale to please put your phone on airplane mode to enable the sale to proceed smoothly.

WELCOME

Welcome to our 24th Annual Bull Sale

The Bulls presented this year will be predominantly off oats and will present in good working order. Lots 1-4 have been run separately and fed on a balanced ration. Lot 3 Tycolah Woodbine U123 has recently had a short spell out with cows. We are keeping semen in both Woodbine U123 and Weatherman U116 as we think they are the type of easy doing well balanced bulls that will be ideal to breed bulls for our clients to cater for the growing grass fed and short grain fed markets.

As you are aware we at Tycolah and The Cottage are very committed to producing a line & type of bull to cope with our varying harsh climatic conditions. This preference has been put ahead of chasing breedplan figures because they were popular at that time. We have found that the figures change but the type and actual performance doesn't. Both studs are interested in following the performance of our cattle through to when they are assessed on the hook. Any feedback from our clients is greatly appreciated and followed through to breed a better article.

We feel for those people going through tough times at the moment, with a widespread drought in the south and west and damaging floods in other areas. We pray that the season will break this Winter, and we can look forward to a better Spring for all.

With the seasons and the unpredictable global markets all we can do as breeders is to strive to breed the most economical reproductive and productive animal we can and try to secure markets that our animal's best suit.

All bulls have been Genomic tested, Sire verified, and semen tested. We strive to consistently provide bulls of a "Best Standard" which to us involves a combination of reproductive soundness, structural soundness, good temperament, and superior genetic quality. In simpler terms, a good bull should be healthy, able to breed effectively, and pass on desirable traits to its offspring.

We welcome any enquiries you have about our cattle and look forward to seeing you on sale day.



Breed Avg. EBVs for 2023 Born Calves

GL	BW	200	400	600	MWT	MILK	SS	DC
-1.0	+3.7	+35	+59	+82	+67	+18	+2.4	-3.7
CWT	EMA	RIB	RUMP	RBY	IMF			
+57	+4.4	+0.9	+1.3	+0.8	+0.9			

Quality Assurance @ Tycolah & The Cottage

We at Tycolah and the Cottage have taken every step to offer you-the buyers a disease-free Sire that will enhance your female herd reproductive rates.

- ✓ All Bulls 7 in 1 vaccinated
- ✓ All Bulls Vibrio Vaccinated x2 in 2025
- ✓ All Bulls PI Tested for Bovine Viral Diarrhoea Virus (BVDV) = Negative
- ✓ All Tycolah Bulls vaccinated for 3-day sickness
- ✓ All animals require Spring boosters

Genomics Utilisation @ Tycolah and The Cottage

- ✓ All bulls Genomic tested

Semen Testing @ Tycolah and The Cottage

- ✓ All Bulls tested for Semen Quality and samples collected for Morphology if required. Bulls tested by Brendan Coonan Northern Artificial Breeders on 29/05/2025

Bio-Security @ Tycolah and The Cottage

- ✓ J-BAS Score 6

CARE OF YOUR NEW BULL

ARRIVAL AND MANAGEMENT OF YOUR NEW BULL

- Sale bulls from "Tycolah" and "The Cottage" have been handled quietly and with care all their lives. They are run in relatively large groups, i.e. not alone.
- When they arrive at their new home, they must adjust to new yards, different noises, loss of their mates, different people, different handling methods, trucking, unloading, new pad-docks, different feed, and water! That is, it is a stressful time for them.
- To minimise the stress and speed their settling to their new environment, it is helpful to unload them at the yards into a group of quiet house cows, herd cows or steers so they are again in a "herd" and not alone. Feed with hay and let them settle.
- This is even more important if they arrive at night. Provide hay and water if they arrive at night and leave handling until the next morning. Don't jump them off the truck into an open, strange paddock. Settling may be immediate or take some time.
- At his first joining, check your new bull regularly for at least the first 2 weeks, so any injury is detected early. Early detection and removal from the group may mean minimising any loss of use.
- Try to avoid joining a young bull in a group with an older bull or bulls, as he will be dominated and so do little work for you.
- Even a quiet bull taken away from his mates can stir up on his own in a different environment.

Lot 1 TYCOLAH WAYFARER U121 (AI) (P)

A/c: SR & TA Crowley

Ident: TPCU121

Born: 17/08/2023

Eye Pigment: 100/100

ALLENDALDE YALLAROI 2 (AI) (TW) (PP)
 ALLENDALDE BINGARA K184 (P)
 ALLENDALDE CORA C81 (P)
 Sire: **TYCOLAH QUEENSCLIFF N029 (PP)**
 WARARBA PARK FIRST CLASS F230 (S)
 TYCOLAH IRISH MAID J140 (P)
 SEVENBARDOT IRISH MAID F39 (P)
 CANNAWIGRA COMMANDER Z51 (S)
 MOUNTAIN VALLEY LEIUTENANT L1 (P)
 MOUNTAIN VALLEY VICTORIA F17 (P)
 Dam: **TYCOLAH MIN N101 (P)**
 TH 223 711 CONQUER 409X (IMP USA) (AI) (ET) (P)
 TYCOLAH MIN K36 (AI) (P)
 TYCOLAH MIN G84 (P)



Purchaser:

Price \$:

May 2025 Hereford BREEDPLAN

GL	BW	200	400	600	MCW	Milk	SS	DC	Cwt	EMA	Rib	RUMP	RBY%	IMF%
-0.6	+5.6	+41	+61	+92	+79	+17	+2.2	-2.6	+62	+4.3	+1.2	+2.2	+1.2	+0.2
73%	78%	76%	74%	76%	65%	63%	75%	35%	60%	53%	56%	60%	49%	59%
55	80	20	45	30	30	60	55	75	35	50	35	25	35	85

Traits Observed: GL,CE,BWT,200WT,Genomics

Genetic Tests: POLL C-Heterozygous Polled (HPc),IEF,HYF,DLF, **Parent Verification:** Sire: Verified, Dam: Not Tested

Notes: BW44kgs: A powerful well-muscled bull on good bone with a real sire's head to kick the sale off. The Min family have produced some very sirey bulls for us.

Lot 2 OAK DOWNS U102 (PP)

A/c: SR & TA Crowley

Ident: OAKU102

Born: 17/06/2023

Eye Pigment: /

WIRRUNA JEANS J134 (AI) (PP)
 WIRRUNA LEGO L395 (PP)
 WIRRUNA HYACINTH H250 (P)
 Sire: **KIDMAN GENIUS P126 (PP)**
 WIRRUNA ELDER E327 (AI) (ET) (P)
 KIDMAN MISS GUNN L143 (P)
 KIDMAN MISS GUNN E90 (P)
 MAWARRA VICE ADMIRAL (H)
 MAWARRA LITTLE RIPPA (AI) (ET) (S)
 MERAWAH SHAMROCK A124 (AI) (ET) (P)
 Dam: **OAK DOWNS RUBY R124 (P)**
 MARKOWEN VINCENT C66 (P)
 OAK DOWNS RUBY F165 (P)
 OAK DOWNS RUBY 105 (P)



Purchaser:

Price \$:

May 2025 Hereford BREEDPLAN

GL	BW	200	400	600	MCW	Milk	SS	DC	Cwt	EMA	Rib	RUMP	RBY%	IMF%
-2.0	+6.7	+45	+68	+97	+63	+21	+3.7	-2.9	+66	+6.9	+0.3	+0.7	+2.4	+0.8
70%	76%	74%	73%	75%	64%	60%	74%	35%	59%	52%	55%	59%	46%	58%
30	92	7	20	20	60	30	7	70	25	7	75	70	3	50

Traits Observed: Genomics

Genetic Tests: POLL C-Homozygous Polled (PcPc),IEF,HYF,DLF, **Parent Verification:** Sire: Verified, Dam: Not Tested

Notes: A real sirey type. Good skin, depth of body and good flat bone. An easy-doing strong constitution bull with a big EMA. His Dam is half sister to Oak Downs Lawlout who bred well for Mawarra Stud.

Lot 3**TYCOLAH WOODBINE U123 (AI) (PP)****A/c: SR & TA Crowley****Ident: TPCU123****Born: 18/08/2023****Eye Pigment: 100/90**

ALLENDALDE YALLAROI 2 (AI) (TW) (PP)
 ALLENDALDE BINGARA K184 (P)
 ALLENDALDE CORA C81 (P)
Sire: TYCOLAH QUEENSCLIFF N029 (PP)
 WARARBA PARK FIRST CLASS F230 (S)
 TYCOLAH IRISH MAID J140 (P)
 SEVENBARDOT IRISH MAID F39 (P)

KOANUI TECHNO 3062 (IMP NZL) (PP)
 KOANUI TECHNO 6179 (IMP NZL) (PP)
 KOANUI ANGEL 2392 (P)

Dam: TYCOLAH MIN Q022 (AI) (P)

MOUNTAIN VALLEY JINX J74 (PP)
 TYCOLAH MIN M057 (P)
 TYCOLAH MIN F06 (P)



Purchaser:

Price \$:

May 2025 Hereford BREEDPLAN

GL	BW	200	400	600	MCW	Milk	SS	DC	Cwt	EMA	Rib	RUMP	RBY%	IMF%
+0.1	+2.3	+30	+53	+74	+61	+17	+1.9	-4.2	+58	+3.4	+2.2	+3.5	+0.0	+0.3
76%	79%	77%	76%	77%	67%	65%	77%	38%	62%	55%	58%	62%	51%	61%
70	30	75	70	70	65	60	70	40	45	75	6	4	85	80

Traits Observed: GL,CE,BWT,200WT,Genomics**Genetic Tests:** POLL C-Homozygous Polled (PcPc),IEF,HYF,DLF, **Parent Verification:** Sire: Verified, Dam: Not Tested

Notes: BW40kgs: Woodbine is a "Special Bull" who was Junior Champion at Sydney Royal 2025 and was also first in pair of bulls with Walhallow and in our winning team for Breeders group. A beautifully balanced good skinned bull and an athletic parader with an impeccable temperament. The Queenscliff/Techno cross has worked very well. We are keeping semen in this bull for our own use ONLY. His Dam is another Min with a very good udder and attachment.

Lot 4**TYCOLAH WALHALLOW U141 (PP)****A/c: SR & TA Crowley****Ident: TPCU141****Born: 26/08/2023****Eye Pigment: 100/100**

DAYS WIZARD F84 (P)
 THE RANCH TIPPERARY M005 (AI) (PP)
 THE RANCH LAST DAY J38 (P)
Sire: THE RANCH QUALIFIER Q033 (PP)
 HUNTER LAKES EXCELSIOR E26 (P)
 GRASSY MOUNTAIN NOBLE GIRL 411 (P)
 GRASSY MOUNTAIN NOBEL GIRL 062 (P)

COLUMBIAN SOUTHERN SON A18 (P)
 WARARBA PARK FIRST CLASS F230 (S)
 WARARBA PARK VICTORIA A94 (P)

Dam: TYCOLAH COUNTESS M117 (P)

KARINA CHERRY Z8 (PP)
 TYCOLAH COUNTESS C34 (P)
 TYCOLAH COUNTESS W72 (P)



Purchaser:

Price \$:

May 2025 Hereford BREEDPLAN

GL	BW	200	400	600	MCW	Milk	SS	DC	Cwt	EMA	Rib	RUMP	RBY%	IMF%
-0.8	+4.3	+33	+43	+58	+47	+19	+2.5	-3.2	+34	+2.4	+0.0	+0.5	+1.1	-0.9
67%	77%	75%	73%	74%	63%	60%	73%	31%	57%	49%	52%	56%	44%	54%
55	60	60	92	92	85	40	40	60	97	92	85	75	40	99

Traits Observed: CE,BWT,200WT,Genomics**Genetic Tests:** POLL C-Homozygous Polled (PcPc),IEF,HYF,DLF, **Parent Verification:** Sire: Verified, Dam: Not Tested

Notes: BW41kgs: Teamed up with Woodbine to win the pair of bulls at this years Sydney Royal. Walhallow had the highest EMA of 134sqcm of the Junior Bulls at Sydney. Makes us wonder where Breedplan get their estimated figures from. A well muscled quality carcass bull. Out of an imposing cow whose female line has been our most successful sire breeding line.

AUTUMN DROP BULLS

Lot 5 TYCOLAH WALGETT U002 (PP)

A/c: SR & TA Crowley

Ident: TPCU002

Born: 14/02/2023

Eye Pigment: 100/100

ALLEDALE SUPERSTAR B28 (AI) (ET) (S)

ALLEDALE YALLAROI 2 (AI) (TW) (PP)

ALLEDALE FANCY A181 (AI) (P)

Sire: **ALLEDALE BINGARA K184 (P)**

KIDMAN COL JOY T96 (AI) (TW) (P)

ALLEDALE CORA C81 (P)

ALLEDALE CORA X59 (P)

KOANUI TECHNO 3062 (IMP NZL) (PP)

KOANUI TECHNO 6179 (IMP NZL) (PP)

KOANUI ANGEL 2392 (P)

Dam: **TYCOLAH COUNTESS Q019 (AI) (P)**

WARARBA PARK FIRST CLASS F230 (S)

TYCOLAH COUNTESS M117 (P)

TYCOLAH COUNTESS C34 (P)



Purchaser:

Price \$:

May 2025 Hereford BREEDPLAN

GL	BW	200	400	600	MCW	Milk	SS	DC	Cwt	EMA	Rib	RUMP	RBY%	IMF%
-2.8	+5.3	+40	+73	+101	+85	+11	+4.4	-6.0	+63	+3.4	+0.5	+1.2	+0.9	+0.7
72%	78%	76%	74%	76%	66%	64%	75%	38%	60%	53%	56%	60%	50%	59%
20	75	25	10	15	20	92	2	15	30	75	70	50	45	55

Traits Observed: BWT,200WT,600WT,Genomics

Genetic Tests: POLL C-Homozygous Polled (PcPc),IEF,HYF,DLF, Parent Verification: Sire: Verified, Dam: Not Tested

Notes: BW38kgs: The last natural Allendale Bingara born calf at Tycolah and a beauty. Dam is a half sister to Walhallow. A stylish good coloured bull on good bone. A moderate birthweight of 38kgs.

Lot 6 TYCOLAH WALK ON U004 (PP)

A/c: SR & TA Crowley

Ident: TPCU004

Born: 28/02/2023

Eye Pigment: 100/100

DAYS WIZARD F84 (P)

THE RANCH TIPPERARY M005 (AI) (PP)

THE RANCH LAST DAY J38 (P)

Sire: **THE RANCH QUALIFIER Q033 (PP)**

HUNTER LAKES EXCELSIOR E26 (P)

GRASSY MOUNTAIN NOBLE GIRL 411 (P)

GRASSY MOUNTAIN NOBEL GIRL 062 (P)

ALLEDALE YALLAROI 2 (AI) (TW) (PP)

ALLEDALE BINGARA K184 (P)

ALLEDALE CORA C81 (P)

Dam: **TYCOLAH PACETTE N006 (P)**

VALMA PRESTIGE E60 (P)

TYCOLAH PACETTE K49 (P)

TYCOLAH PACETTE D85 (P)



Purchaser:

Price \$:

May 2025 Hereford BREEDPLAN

GL	BW	200	400	600	MCW	Milk	SS	DC	Cwt	EMA	Rib	RUMP	RBY%	IMF%
+2.2	+4.9	+36	+52	+68	+47	+22	+2.4	-2.7	+41	+2.5	+0.7	+1.6	+0.3	+0.3
68%	77%	75%	73%	75%	63%	58%	74%	31%	56%	49%	52%	56%	43%	55%
95	70	45	75	80	85	20	45	70	90	91	60	40	75	80

Traits Observed: CE,BWT,200WT,600WT,Genomics

Genetic Tests: POLL C-Homozygous Polled (PcPc),IEF,HYF,DLF, Parent Verification: Sire: Verified, Dam: Not Tested

Notes: BW40Kgs: A very well shaped, dark deep bodied bull with a good muscle pattern. Walk On has a Sirey head and hooded eyes.

Lot 7 TYCOLAH WHISPER U029 (PP)

A/c: SR & TA Crowley

Ident: TPCU029

Born: 16/03/2023

Eye Pigment: 100/100

ALLENDALE BINGARA K184 (P)
TYCOLAH QUEENSCLIFF N029 (PP)
TYCOLAH IRISH MAID J140 (P)
Sire: **TYCOLAH UNIVERSE S001 (PP)**
TYCOLAH HELL BENT (S)
WARARBA PARK JESSIE J93 (P)
WARARBA PARK JESSIE E124 (P)

ALLENDALE YALLAROI 2 (AI) (TW) (PP)
ALLENDALE BINGARA K184 (P)
ALLENDALE CORA C81 (P)

Dam: **TYCOLAH CLIMAX P055 (P)**

WARARBA PARK FIRST CLASS F230 (S)
TYCOLAH CLIMAX J46 (P)
TYCOLAH CLIMAX C60 (AI) (P)



Purchaser:

Price \$:

May 2025 Hereford BREEDPLAN

GL	BW	200	400	600	MCW	Milk	SS	DC	Cwt	EMA	Rib	RUMP	RBY%	IMF%
-2.7	+3.2	+35	+58	+82	+76	+11	+1.9	-2.8	+51	-0.1	+0.7	+1.5	-0.6	-0.5
69%	77%	75%	73%	75%	63%	59%	74%	31%	57%	49%	52%	57%	44%	55%
20	40	50	55	50	35	92	70	70	70	99	60	40	97	98

Traits Observed: CE,BWT,200WT,600WT,Genomics

Genetic Tests: POLL C-Homozygous Polled (PcPc),IEF,HYF,DLF, **Parent Verification:** Sire: Verified, Dam: Not Tested

Notes: BW36kgs:A long growthy bull with a great spine and well laid in shoulder

Lot 8 TYCOLAH WISCONSIN U041 (P)

A/c: SR & TA Crowley

Ident: TPCU041

Born: 27/03/2023

Eye Pigment: 100/100

DAYS WIZARD F84 (P)
THE RANCH TIPPERARY M005 (AI) (PP)
THE RANCH LAST DAY J38 (P)
Sire: **THE RANCH QUALIFIER Q033 (PP)**
HUNTER LAKES EXCELSIOR E26 (P)
GRASSY MOUNTAIN NOBLE GIRL 411 (P)
GRASSY MOUNTAIN NOBEL GIRL 062 (P)

SHF WONDER M326 W18 ET (P)
NJW 73S W18 HOMETOWN 10Y (IMP USA) (P)
NJW P606 72N DAYDREAM 73S (P)

Dam: **TYCOLAH COUNTESS P026 (AI) (P)**

VALMA PRESTIGE E60 (P)
TYCOLAH COUNTESS J39 (P)
TYCOLAH COUNTESS C34 (P)



Purchaser:

Price \$:

May 2025 Hereford BREEDPLAN

GL	BW	200	400	600	MCW	Milk	SS	DC	Cwt	EMA	Rib	RUMP	RBY%	IMF%
+0.0	+6.0	+38	+53	+73	+54	+19	+1.6	-0.3	+42	+3.3	-0.9	-2.1	+2.3	-0.8
69%	77%	75%	73%	75%	64%	59%	74%	33%	57%	51%	53%	58%	46%	56%
70	85	35	70	75	75	40	80	98	90	75	98	99	4	99

Traits Observed: CE,BWT,200WT,600WT,Genomics

Genetic Tests: POLL C-Heterozygous Polled (HPc),IEF,HYF,DLF, **Parent Verification:** Sire: Verified, Dam: Not Tested

Notes: BW39kgs: A long smooth fronted bull with a very good muscle pattern . His Dam is an excellent Hometown cow that combines muscle and milk.

Lot 9 TYCOLAH WASP U008 (PP)

A/c: SR & TA Crowley

Ident: TPCU008

Born: 28/02/2023

Eye Pigment: 100/100

DAYS WIZARD F84 (P)
THE RANCH TIPPERARY M005 (AI) (PP)
THE RANCH LAST DAY J38 (P)
Sire: **THE RANCH QUALIFIER Q033 (PP)**
HUNTER LAKES EXCELSIOR E26 (P)
GRASSY MOUNTAIN NOBLE GIRL 411 (P)
GRASSY MOUNTAIN NOBEL GIRL 062 (P)

ALLENDAL YALLAROI 2 (AI) (TW) (PP)
ALLENDAL BINGARA K184 (P)
ALLENDAL CORA C81 (P)

Dam: **TYCOLAH CORISANDE Q045 (P)**
WARARBA PARK FIRST CLASS F230 (S)
TYCOLAH CORISANDE J98 (P)
TYCOLAH CORISANDE E122 (PP)



Purchaser:

Price \$:

May 2025 Hereford BREEDPLAN														
GL	BW	200	400	600	MCW	Milk	SS	DC	Cwt	EMA	Rib	RUMP	RBY%	IMF%
-2.0	+6.9	+42	+59	+79	+75	+15	+2.3	-0.6	+44	+1.7	-0.9	-0.7	+1.0	-0.7
69%	78%	76%	74%	76%	64%	59%	75%	32%	58%	51%	53%	57%	44%	56%
30	93	15	50	60	35	75	50	96	85	98	98	94	40	99

Traits Observed: CE,BWT,200WT,600WT,Genomics

Genetic Tests: POLL C-Homozygous Polled (PcPf),IEF,HYF,DLF, **Parent Verification:** Sire: Verified, Dam: Verified

Notes: BW41kgs: A long framed bull with good skin on good bone with a good spring of rib. His Granddam & Great Granddam have been two of our best cows.

Lot 10 TYCOLAH WILFUL U013 (PP)

A/c: SR & TA Crowley

Ident: TPCU013

Born: 06/03/2023

Eye Pigment: 100/75

ALLENDAL BINGARA K184 (P)
TYCOLAH QUEENSCLIFF N029 (PP)
TYCOLAH IRISH MAID J140 (P)
Sire: **TYCOLAH UNIVERSE S001 (PP)**
TYCOLAH HELL BENT (S)
WARARBA PARK JESSIE J93 (P)
WARARBA PARK JESSIE E124 (P)
ALLENDAL YALLAROI 2 (AI) (TW) (PP)
ALLENDAL BINGARA K184 (P)
ALLENDAL CORA C81 (P)
Dam: **TYCOLAH CORISANDE P002 (P)**
KANIMBLA THRIFT SHOP J036 (PP)
TYCOLAH CORISANDE M050 (P)
TYCOLAH CORISANDE J98 (P)



Purchaser:

Price \$:

May 2025 Hereford BREEDPLAN														
GL	BW	200	400	600	MCW	Milk	SS	DC	Cwt	EMA	Rib	RUMP	RBY%	IMF%
-1.5	+4.5	+36	+60	+79	+81	+10	+1.9	-2.1	+55	+0.9	-0.1	+0.1	+0.9	-0.6
71%	79%	76%	75%	76%	65%	61%	76%	33%	59%	51%	54%	58%	44%	57%
40	65	45	50	60	25	94	70	80	55	99	90	85	45	99

Traits Observed: CE,BWT,200WT,600WT,Genomics

Genetic Tests: POLL C-Homozygous Polled (PcPc),IEF,HYF,DLF, **Parent Verification:** Sire: Verified, Dam: Not Tested

Notes: BW39kgs: Another good skinned bull with good length, bone and a great head and eye setting. Dam had one previous sale bull selling for \$14,000 and Grand dam has had bulls selling to \$46,000. Goes back to the great Corisande J98 cow.

Lot 11 TYCOLAH WORTHEY U005 (PP)

A/c: SR & TA Crowley

Ident: TPCU005

Born: 28/02/2023

Eye Pigment: 100/100

DAYS WIZARD F84 (P)
THE RANCH TIPPERARY M005 (AI) (PP)
THE RANCH LAST DAY J38 (P)
Sire: **THE RANCH QUALIFIER Q033 (PP)**
HUNTER LAKES EXCELSIOR E26 (P)
GRASSY MOUNTAIN NOBLE GIRL 411 (P)
GRASSY MOUNTAIN NOBEL GIRL 062 (P)

TYCOLAH FAIR N SQUARE (P)
TYCOLAH LINED UP LEVEL H105 (AI) (P)
TYCOLAH CANARY F64 (P)
Dam: **TYCOLAH COUNTESS L124 (P)**
KARINA CHERRY Z8 (PP)
TYCOLAH COUNTESS D33 (P)
TYCOLAH COUNTESS Y75 (P)



Purchaser:

Price \$:

May 2025 Hereford BREEDPLAN														
GL	BW	200	400	600	MCW	Milk	SS	DC	Cwt	EMA	Rib	RUMP	RBY%	IMF%
-3.0	+5.3	+38	+53	+82	+74	+22	+2.2	-0.8	+50	+2.6	-0.9	-1.6	+1.8	-0.2
68%	77%	75%	73%	75%	63%	58%	74%	31%	56%	49%	52%	57%	44%	54%
15	75	35	70	50	40	20	55	95	70	90	98	99	10	94

Traits Observed: CE,BWT,200WT,600WT,Genomics

Genetic Tests: POLL C-Homozygous Polled (PcPc),IEF,HYF,DLF, **Parent Verification:** Sire: Verified, Dam: Not Tested

Notes: BW40kgs: A big long well fleshed bull with good skin on good bone.

Lot 12 TYCOLAH WOMBAT U058 (PP)

A/c: SR & TA Crowley

Ident: TPCU058

Born: 13/04/2023

Eye Pigment: 100/100

DAYS WIZARD F84 (P)
THE RANCH TIPPERARY M005 (AI) (PP)
THE RANCH LAST DAY J38 (P)
Sire: **THE RANCH QUALIFIER Q033 (PP)**
HUNTER LAKES EXCELSIOR E26 (P)
GRASSY MOUNTAIN NOBLE GIRL 411 (P)
GRASSY MOUNTAIN NOBEL GIRL 062 (P)

ALLENDALDE WATERHOUSE D1 (PP)
DAYS ROBIN HOOD H38 (AI) (ET) (PP)
ALLENDALDE FANCY U5 (AI) (P)
Dam: **TYCOLAH BONNIE M038 (AI) (P)**
WARARBA PARK FIRST CLASS F230 (S)
TYCOLAH BONNIE J74 (P)
TYCOLAH BONNIE E96 (P)



Purchaser:

Price \$:

May 2025 Hereford BREEDPLAN														
GL	BW	200	400	600	MCW	Milk	SS	DC	Cwt	EMA	Rib	RUMP	RBY%	IMF%
-1.0	+3.5	+28	+47	+61	+40	+15	+1.7	-4.3	+37	+3.3	+1.1	+3.0	+0.2	+0.8
69%	77%	75%	73%	75%	64%	59%	74%	34%	58%	52%	54%	58%	45%	57%
50	45	85	90	90	90	75	75	40	95	75	40	8	80	50

Traits Observed: BWT,200WT,600WT,Genomics

Genetic Tests: POLL C-Homozygous Polled (PcPc),IEF,HYF,DLF, **Parent Verification:** Sire: Verified, Dam: Not Tested

Notes: BW38kgs: A good skinned very correct well muscled bull out of a very good Robin Hood cow.

Lot 13 TYCOLAH WELLSHOT U086 (P)

A/c: SR & TA Crowley

Ident: TPCU086

Born: 04/07/2023

Eye Pigment: 100/100

DAYS ELABORATE J59 (AI) (P)
GRATHLYN HOLYFIELD N019 (AI) (P)
GRATHLYN JEWESS L004 (AI) (PP)

Sire: **SUPPLE RAT A TAT TAT (PP)**

TYCOLAH KAPUTAR G27 (P)
SUPPLE ELMA 45 (P)
LINDENDALE ELMA 44 (P)

KARINA CHERRY Z8 (PP)
TYCOLAH HUMDINGER (S)
TYCOLAH CHERRY W28 (P)

Dam: **TYCOLAH COUNTESS J78 (AI) (P)**

TYCOLAH INSPIRE E63 (S)
TYCOLAH COUNTESS G164 (P)
TYCOLAH COUNTESS B10 (P)



Purchaser:

Price \$:

May 2025 Hereford BREEDPLAN														
GL	BW	200	400	600	MCW	Milk	SS	DC	Cwt	EMA	Rib	RUMP	RBY%	IMF%
+2.1	+6.3	+28	+57	+69	+78	+8	+2.8	-0.1	+39	+2.6	-0.2	+0.0	+0.1	+1.0
68%	78%	75%	74%	76%	65%	60%	76%	33%	59%	52%	55%	59%	47%	57%
95	90	85	60	80	30	98	30	98	92	90	90	85	85	40

Traits Observed: CE,BWT,200WT,400WT,Genomics

Genetic Tests: POLL C-Heterozygous Polled (HPc),IEF,HYF,DLF, **Parent Verification:** Sire: Verified, Dam: Not Tested

Notes: BW42kgs: First of the Rat aTat Tats. Typically long and deep coloured like his sire. A good head and eye out of a very good old cow who bred on forever.

Lot 14 TYCOLAH WALLACE U066 (S)

A/c: SR & TA Crowley

Ident: TPCU066

Born: 28/04/2023

Eye Pigment: 100/100

DAYS ELABORATE J59 (AI) (P)
GRATHLYN HOLYFIELD N019 (AI) (P)
GRATHLYN JEWESS L004 (AI) (PP)

Sire: **SUPPLE RAT A TAT TAT (PP)**

TYCOLAH KAPUTAR G27 (P)
SUPPLE ELMA 45 (P)
LINDENDALE ELMA 44 (P)

CANNAWIGRA COMMANDER Z51 (S)
MOUNTAIN VALLEY LEIUTENANT L1 (P)
MOUNTAIN VALLEY VICTORIA F17 (P)

Dam: **TYCOLAH ADVANCE N163 (P)**

TH 223 71I CONQUER 409X (IMP USA) (AI) (ET) (P)
TYCOLAH ADVANCE K34 (AI) (P)
TYCOLAH ADVANCE G22 (P)



Purchaser:

Price \$:

May 2025 Hereford BREEDPLAN														
GL	BW	200	400	600	MCW	Milk	SS	DC	Cwt	EMA	Rib	RUMP	RBY%	IMF%
+1.1	+6.0	+34	+51	+57	+44	+6	+2.1	-4.9	+30	+2.9	+1.4	+2.0	+0.7	-0.4
67%	77%	74%	72%	74%	62%	58%	74%	31%	56%	50%	53%	57%	44%	55%
90	85	55	80	93	85	99	60	30	99	85	25	30	60	97

Traits Observed: BWT,200WT,600WT,Genomics

Genetic Tests: IEF,HYF,DLF, **Parent Verification:** Sire: Verified, Dam: Not Tested

Notes: BW44kgs: Like the previous bull, good skinned, dark colour with a good head and eye. His Dam has a great udder and attachment and is shaping up as one of our top breeders. Dam has just dropped another ripping bull calf.

Lot 15 TYCOLAH WOLLUN U077 (S)

A/c: SR & TA Crowley

Ident: TPCU077

Born: 25/06/2023

Eye Pigment: 70/90

ALLENDAL E ANZAC E114 (PP)
CENTENNIAL ANZAC L055 (AI) (ET) (PP)
DUNOON PAGEANT G007 (P)

Sire: **TRURO SHOTGUN S008 (P)**

MERAWAH CADET F31 (P)
TRURO MAPLE J010 (H#)
TRURO MAPLE F031 (H#)

ALLENDAL E YALLARO I 2 (AI) (TW) (PP)
ALLENDAL E BINGARA K184 (P)
ALLENDAL E CORA C81 (P)

Dam: **TYCOLAH MARIANNE R012 (P)**

GLENTREVOR WALLACE H427 (AI) (PP)
COURALLIE MARIANNE M540 (AI) (P)
COURALLIE MARIANNE K578 (AI) (P)



Purchaser:

Price \$:

May 2025 Hereford BREEDPLAN

GL	BW	200	400	600	MCW	Milk	SS	DC	Cwt	EMA	Rib	RUMP	RBY%	IMF%
+0.7	+4.3	+37	+60	+81	+59	+25	+4.2	-5.2	+52	+2.3	+1.1	+1.4	+0.2	+0.3
69%	78%	75%	74%	75%	64%	60%	75%	34%	58%	50%	53%	57%	42%	56%
80	60	40	50	55	65	8	3	25	65	93	40	45	80	80

Traits Observed: BWT,200WT,400WT,Genomics

Genetic Tests: IEF,HYF,DLF, Parent Verification: Sire: Verified, Dam: Not Tested

Notes: BW40kgs:Heifers first calf. Typical of the Shotguns. Good skinned and well muscled. Unassisted at birth.

Lot 16 TYCOLAH WANDERER U027 (S)

A/c: SR & TA Crowley

Ident: TPCU027

Born: 13/03/2023

Eye Pigment: 100/100

ALLENDAL E BINGARA K184 (P)
TYCOLAH QUEENSCLIFF N029 (PP)
TYCOLAH IRISH MAID J140 (P)

Sire: **TYCOLAH UNIVERSE S001 (PP)**

TYCOLAH HELL BENT (S)
WARARBA PARK JESSIE J93 (P)
WARARBA PARK JESSIE E124 (P)

VCR 993W ULTIMATE 236Z (P)
JDH 4X ULTIMATE 236Z 94B (IMP CAN) (P)
JDH AH VIOLETS RECRUIT 4X ET (P)

Dam: **TYCOLAH CORISANDE P022 (AI) (P)**

WARARBA PARK FIRST CLASS F230 (S)
TYCOLAH CORISANDE L74 (P)
TYCOLAH CORISANDE E122 (PP)



Purchaser:

Price \$:

May 2025 Hereford BREEDPLAN

GL	BW	200	400	600	MCW	Milk	SS	DC	Cwt	EMA	Rib	RUMP	RBY%	IMF%
-1.6	+4.2	+36	+62	+93	+87	+19	+3.2	-4.5	+65	+3.4	+1.3	+2.5	+0.4	-0.5
69%	77%	74%	72%	74%	62%	58%	73%	30%	56%	47%	51%	55%	42%	54%
35	60	45	40	25	20	40	15	35	25	75	30	15	70	98

Traits Observed: CE,BWT,200WT,600WT,Genomics

Genetic Tests: IEF,HYF,DLF, Parent Verification: Sire: Verified, Dam: Not Tested

Notes: BW40kgs: A big bodied Universe bull. Out of a very good breeding Ultimate cow. Her yearling heifer was in this years winning Breeders Group at Sydney Royal .

Lot 17 TYCOLAH WONG U057 (PP)

A/c: SR & TA Crowley

Ident: TPCU057

Born: 14/05/2023

Eye Pigment: 100/100

DAYS ELABORATE J59 (AI) (P)
GRATHLYN HOLYFIELD N019 (AI) (P)
GRATHLYN JEWESS L004 (AI) (PP)

Sire: **SUPPLE RAT A TAT TAT (PP)**

TYCOLAH KAPUTAR G27 (P)
SUPPLE ELMA 45 (P)
LINDENDALE ELMA 44 (P)

COLUMBIAN SOUTHERN SON A18 (P)
WARARBA PARK FIRST CLASS F230 (S)
WARARBA PARK VICTORIA A94 (P)

Dam: **TYCOLAH ASTERET J66 (P)**

KARINA CHERRY Z8 (PP)
TYCOLAH ASTERET E94 (P)
TYCOLAH ASTERET A129 (P)

Purchaser:

Price \$:



May 2025 Hereford BREEDPLAN

GL	BW	200	400	600	MCW	Milk	SS	DC	Cwt	EMA	Rib	RUMP	RBY%	IMF%
-3.1	+6.5	+43	+69	+86	+89	+14	+3.3	-2.8	+60	+6.1	-0.4	-0.3	+2.1	+0.3
68%	78%	75%	73%	75%	64%	59%	75%	33%	58%	51%	54%	59%	47%	56%
15	90	15	20	40	15	80	15	70	40	15	92	90	6	80

Traits Observed: BWT,200WT,600WT,Genomics

Genetic Tests: POLL C-Homozygous Polled (PcPc),IEF,HYF,DLF, **Parent Verification:** Sire: Verified, Dam: Not Tested

Notes: BW40kgs: A good clean skinned long smooth shouldered bull. His Dam has been a prolific breeder.

Lot 18 TYCOLAH WIND-UP U055 (PP)

A/c: SR & TA Crowley

Ident: TPCU055

Born: 07/04/2023

Eye Pigment: 100/100

DAYS WIZARD F84 (P)
THE RANCH TIPPERARY M005 (AI) (PP)
THE RANCH LAST DAY J38 (P)
Sire: **THE RANCH QUALIFIER Q033 (PP)**
HUNTER LAKES EXCELSIOR E26 (P)
GRASSY MOUNTAIN NOBLE GIRL 411 (P)
GRASSY MOUNTAIN NOBEL GIRL 062 (P)

ALLENDAL YALLAROI 2 (AI) (TW) (PP)
ALLENDAL BINGARA K184 (P)
ALLENDAL CORA C81 (P)

Dam: **TYCOLAH COUNTESS P044 (P)**

VALMA PRESTIGE E60 (P)
TYCOLAH COUNTESS H100 (P)
TYCOLAH COUNTESS B100 (P)

Purchaser:

Price \$:



May 2025 Hereford BREEDPLAN

GL	BW	200	400	600	MCW	Milk	SS	DC	Cwt	EMA	Rib	RUMP	RBY%	IMF%
+0.9	+7.8	+45	+69	+92	+86	+18	+2.6	-0.9	+57	+2.3	-0.8	-0.9	+1.3	-1.0
68%	77%	75%	73%	75%	63%	58%	74%	31%	57%	49%	53%	57%	45%	55%
85	98	7	20	30	20	50	35	94	50	93	97	96	30	99

Traits Observed: BWT,200WT,Genomics

Genetic Tests: POLL C-Homozygous Polled (PcPc),IEF,HYF,DLF, **Parent Verification:** Sire: Verified, Dam: Not Tested

Notes: BW40kgs: A very big dark coloured bull with great length from a great cow line. Grandam was Junior Champion Sydney 2014 and Dam of Quilpie N011 used as a stud sire in the Ranch Stud.

Lot 19 TYCOLAH WORLDWIDE U011 (PP)

A/c: SR & TA Crowley

Ident: TPCU011

Born: 04/03/2023

Eye Pigment: 100/100

ALLENDALDE BINGARA K184 (P)

TYCOLAH QUEENSCLIFF N029 (PP)

TYCOLAH IRISH MAID J140 (P)

Sire: **TYCOLAH UNIVERSE S001 (PP)**

TYCOLAH HELL BENT (S)

WARARBA PARK JESSIE J93 (P)

WARARBA PARK JESSIE E124 (P)

VCR 993W ULTIMATE 236Z (P)

JDH 4X ULTIMATE 236Z 94B (IMP CAN) (P)

JDH AH VIOLETS RECRUIT 4X ET (P)

Dam: **TYCOLAH MARSHALL LASS P117 (AI) (P)**

KARINA CHERRY Z8 (PP)

TYCOLAH MARSHALL LASS D49 (P)

TYCOLAH MARSHALL LASS V89 (P)



Purchaser:

Price \$:

May 2025 Hereford BREEDPLAN

GL	BW	200	400	600	MCW	Milk	SS	DC	Cwt	EMA	Rib	RUMP	RBY%	IMF%
-1.7	+5.5	+38	+59	+88	+74	+15	+1.4	-2.9	+59	+3.7	+2.0	+2.8	+0.0	+0.9
70%	77%	75%	73%	75%	63%	60%	74%	31%	57%	49%	52%	57%	43%	55%
35	80	35	50	35	40	75	90	70	40	65	9	10	85	45

Traits Observed: CE,BWT,200WT,600WT,Genomics

Genetic Tests: POLL C-Homozygous Polled (PcPc),IEF,HYF,DLF, **Parent Verification:** Sire: Verified, Dam: Not Tested

Notes: BW39kgs: Another dark coloured very long smooth shouldered bull out of a very productive cow line.

SPRING DROP BULLS

Lot 20 TYCOLAH WEATHERMAN U116 (AI) (PP)

A/c: SR & TA Crowley

Ident: TPCU116

Born: 15/08/2023

Eye Pigment: 100/100

MINLACOWIE GRIFFIN (PP)

YAVENVALE KINGPIN K317 (PP)

YAVENVALE TREASURE D403 (P)

Sire: **YAVENVALE RAINMAKER R464 (AI) (PP)**

YAVENVALE GUARDSMAN G471 (AI) (P)

YAVENVALE JULIET M535 (P)

YAVENVALE JULIET J031 (P)

MERAWAH EXPORT F21 (P)

KANIMBLA THRIFT SHOP J036 (PP)

MT RAVEN SHAMROCK D312 (P)

Dam: **TYCOLAH CORISANDE M050 (P)**

WARARBA PARK FIRST CLASS F230 (S)

TYCOLAH CORISANDE J98 (P)

TYCOLAH CORISANDE E122 (PP)



Purchaser:

Price \$:

May 2025 Hereford BREEDPLAN

GL	BW	200	400	600	MCW	Milk	SS	DC	Cwt	EMA	Rib	RUMP	RBY%	IMF%
-5.3	+3.3	+37	+68	+92	+98	+13	+1.6	-3.7	+72	+3.2	+2.1	+3.4	-0.6	+0.9
75%	79%	76%	75%	76%	65%	61%	76%	35%	60%	52%	55%	59%	47%	58%
3	45	40	20	30	7	85	80	50	10	80	7	5	97	45

Traits Observed: GL,CE,BWT,200WT,400WT,Genomics

Genetic Tests: POLL C-Homozygous Polled (PcPc),IEF,HYF,DLF, **Parent Verification:** Sire: Verified, Dam: Not Tested

Notes: BW39kgs: We purchased semen in this stylish sire from Remolea Stud. They are short gestation, low birthweight calves with good growth. This is a beautifully balanced well muscled bull. Out of one of our top producing cows being the Dam of Tycolah Terry who sold at our 2022 Sale for \$46,000 to Gail and Mac Shann and also Dam of Tycolah Valley Wanderer retained in the stud for stud duties. We are retaining semen in this bull for our own use only.

Lot 21**TYCOLAH WAR CLOUD U114 (AI) (PP)****A/c: SR & TA Crowley****Ident: TPCU114****Born: 13/08/2023****Eye Pigment: 100/100**

MINLACOWIE GRIFFIN (PP)
 YAVENVALE KINGPIN K317 (PP)
 YAVENVALE TREASURE D403 (P)
Sire: YAVENVALE RAINMAKER R464 (AI) (PP)
 YAVENVALE GUARDSMAN G471 (AI) (P)
 YAVENVALE JULIET M535 (P)
 YAVENVALE JULIET J031 (P)

COLUMBIAN SOUTHERN SON A18 (P)
 WARARBA PARK FIRST CLASS F230 (S)
 WARARBA PARK VICTORIA A94 (P)

Dam: TYCOLAH URSULA M106 (P)

EBBX CALGARY (AI) (ET) (P)
 DEBARRY URSULA B230 (P)
 DEBARRY URSULA Y161 (P)



Purchaser:

Price \$:

May 2025 Hereford BREEDPLAN

GL	BW	200	400	600	MCW	Milk	SS	DC	Cwt	EMA	Rib	RUMP	RBY%	IMF%
-6.0	+3.5	+32	+60	+87	+86	+22	+2.2	-5.9	+63	+3.0	+2.1	+3.5	-0.5	+1.1
74%	78%	75%	74%	75%	64%	60%	75%	35%	59%	51%	54%	59%	47%	57%
2	45	70	50	40	20	20	55	15	30	85	7	4	96	35

Traits Observed: GL,CE,BWT,200WT,400WT,Genomics**Genetic Tests:** POLL C-Homozygous Polled (PcPc),IEF,HYF,DLF, **Parent Verification:** Sire: Verified, Dam: Not Tested**Notes:** BW42kgs: A stylish long rich red bull. A very active bull with a great shoulder set. Unfortunately we only got 2 Bulls by Rainmaker. His Dam has been a great producer.**Lot 22****TYCOLAH WOODFORD U134 (TW) (PP)****A/c: SR & TA Crowley****Ident: TPCU134****Born: 25/08/2023****Eye Pigment: 100/100**

ALLENDALE BINGARA K184 (P)
 TYCOLAH QUEENSCLIFF N029 (PP)
 TYCOLAH IRISH MAID J140 (P)
Sire: TYCOLAH UNIVERSE S001 (PP)
 TYCOLAH HELL BENT (S)
 WARARBA PARK JESSIE J93 (P)
 WARARBA PARK JESSIE E124 (P)

CANNAWIGRA COMMANDER Z51 (S)
 MOUNTAIN VALLEY LEIUTENANT L1 (P)
 MOUNTAIN VALLEY VICTORIA F17 (P)

Dam: TYCOLAH COUNTESS N105 (P)

VALMA PRESTIGE E60 (P)
 TYCOLAH COUNTESS J44 (P)
 TYCOLAH COUNTESS X55 (P)



Purchaser:

Price \$:

May 2025 Hereford BREEDPLAN

GL	BW	200	400	600	MCW	Milk	SS	DC	Cwt	EMA	Rib	RUMP	RBY%	IMF%
-1.3	+7.6	+37	+65	+91	+83	+20	+2.0	-0.6	+51	+2.5	+0.4	+0.7	+0.8	-0.6
68%	77%	74%	73%	74%	63%	59%	74%	31%	57%	49%	52%	56%	43%	55%
40	97	40	30	30	25	35	65	96	70	91	70	70	50	99

Traits Observed: BWT,200WT,400WT,Genomics**Genetic Tests:** POLL C-Homozygous Polled (PcPc),IEF,HYF,DLF, **Parent Verification:** Sire: Verified, Dam: Not Tested**Notes:** BW35kgs: The first twin. Long deep and rich coloured. Very hooded eye in a strong head. Dam is an excellent uddered cow and a top producer. Is the Dam of Tycolah Upper Bingara S009 sold to the Hurley Family Condobolin in 2023 for \$12,000

Lot 23 TYCOLAH WOODBRIDGE U135 (TW) (PP)

A/c: SR & TA Crowley

Ident: TPCU135

Born: 25/08/2023

Eye Pigment: 100/100

ALLEDALE BINGARA K184 (P)
 TYCOLAH QUEENSCLIFF N029 (PP)
 TYCOLAH IRISH MAID J140 (P)
 Sire: **TYCOLAH UNIVERSE S001 (PP)**
 TYCOLAH HELL BENT (S)
 WARARBA PARK JESSIE J93 (P)
 WARARBA PARK JESSIE E124 (P)
 CANNAWIGRA COMMANDER Z51 (S)
 MOUNTAIN VALLEY LEIUTENANT L1 (P)
 MOUNTAIN VALLEY VICTORIA F17 (P)
 Dam: **TYCOLAH COUNTESS N105 (P)**
 VALMA PRESTIGE E60 (P)
 TYCOLAH COUNTESS J44 (P)
 TYCOLAH COUNTESS X55 (P)



Purchaser:

Price \$:

May 2025 Hereford BREEDPLAN														
GL	BW	200	400	600	MCW	Milk	SS	DC	Cwt	EMA	Rib	RUMP	RBY%	IMF%
+1.3	+7.3	+31	+48	+67	+54	+16	+2.1	-1.2	+33	+3.0	+1.2	+2.0	+0.5	-0.4
68%	77%	74%	73%	74%	63%	59%	74%	32%	57%	49%	52%	56%	43%	55%
90	96	75	85	85	75	65	60	91	98	85	35	30	70	97

Traits Observed: BWT,200WT,400WT,Genomics

Genetic Tests: POLL C-Homozygous Polled (PcPc),IEF,HYF,DLF, **Parent Verification:** Sire: Verified, Dam: Not Tested

Notes: BW35kgs: Second twin. Deep and Dark. Big nuts and lots of guts. The difference in the growth and milk figures on Breedplan are a mystery to us.

Lot 24 TYCOLAH WHISTLER U104 (P)

A/c: SR & TA Crowley

Ident: TPCU104

Born: 06/08/2023

Eye Pigment: 100/100

BLAIR-ATHOL 13K MAJOR 101N (P)
 BBSF 101N WRANGLER 29W (IMP CAN) (PP)
 BBSF 19D UNIQUE 1P (P)
 Sire: **TYCOLAH UNDERHAND S067 (AI) (ET) (PP)**
 KARINA CHERRY Z8 (PP)
 TYCOLAH MARSHALL LASS D49 (P)
 TYCOLAH MARSHALL LASS V89 (P)
 ALLEDALE YALLAROI 2 (AI) (TW) (PP)
 ALLEDALE BINGARA K184 (P)
 ALLEDALE CORA C81 (P)
 Dam: **TYCOLAH PACETTE R069 (P)**
 MOUNTAIN VALLEY JINX J74 (PP)
 TYCOLAH PACETTE M112 (S)
 TYCOLAH PACETTE D85 (P)



Purchaser:

Price \$:

May 2025 Hereford BREEDPLAN														
GL	BW	200	400	600	MCW	Milk	SS	DC	Cwt	EMA	Rib	RUMP	RBY%	IMF%
+0.7	+5.5	+42	+61	+89	+92	+12	+1.2	+0.5	+60	+1.7	-1.4	-2.0	+1.1	+0.3
67%	76%	73%	72%	73%	62%	58%	73%	31%	56%	47%	50%	55%	41%	54%
80	80	15	45	35	15	90	91	99	40	98	99	99	40	80

Traits Observed: CE,BWT,200WT,400WT,Genomics

Genetic Tests: POLL C-Heterozygous Polled (HPc),IEF,HYF,DLF, **Parent Verification:** Sire: Verified, Dam: Not Tested

Notes: BW40kgs: A long correct structured bull with good skin and hair.

SIRES IN USE



THE RANCH QUALIFIER



TYCOLAH UNIVERSE



SUPPLE RAT A TAT TAT



TYCOLAH QUEENSCLIFF



TYCOLAH SINGLE SHOT



YAVENVALE RAINMAKER



**JUNIOR CHAMPION
BULL TYCOLAH
WOODBINE U123 (PP)**



**LIZ IKIN CLOVERLEE STUD
AND JUDGE IAN GALLOWAY
PRESENTING JUNIOR
CHAMPION BULL AWARD**



**TYCOLAH WINNING
BREEDERS GROUP
SYDNEY ROYAL 2025**



**BEN WITH TYCOLAH
CORISANDE V013 AT
SYDNEY ROYAL**



**BELLA
HEIFER SHOW 2025**



**ARLEY
HEIFER SHOW 2025**

Lot 25 TYCOLAH WILLANDER U155 (S)

A/c: SR & TA Crowley

Ident: TPCU155

Born: 05/09/2023

Eye Pigment: 100/100

ALLENDALDE BINGARA K184 (P)
TYCOLAH QUEENSCLIFF N029 (PP)
TYCOLAH IRISH MAID J140 (P)

Sire: **TYCOLAH UNIVERSE S001 (PP)**

TYCOLAH HELL BENT (S)
WARARBA PARK JESSIE J93 (P)
WARARBA PARK JESSIE E124 (P)

COLUMBIAN SOUTHERN SON A18 (P)
WARARBA PARK FIRST CLASS F230 (S)
WARARBA PARK VICTORIA A94 (P)

Dam: **TYCOLAH PERSONAL M110 (H#)**

KARINA CHERRY Z8 (PP)
TYCOLAH PERSONAL E127 (P)
TYCOLAH PERSONAL A34 (P)



Purchaser:

Price \$:

May 2025 Hereford BREEDPLAN

GL	BW	200	400	600	MCW	Milk	SS	DC	Cwt	EMA	Rib	RUMP	RBY%	IMF%
-4.2	+3.2	+26	+49	+74	+69	+23	+1.8	-4.7	+49	+3.3	+0.4	+1.0	+0.7	+0.2
71%	78%	76%	75%	76%	64%	61%	75%	33%	59%	51%	53%	58%	45%	57%
7	40	90	85	70	50	15	75	30	75	75	70	60	60	85

Traits Observed: CE,BWT,200WT,400WT,Genomics

Genetic Tests: IEF,HYF,DLF, **Parent Verification:** Sire: Verified, Dam: Not Tested

Notes: BW38kgs:(Scurs) A very long good spined bull with good structure. Dam has been a good breeder with sons selling to \$18,000 to Jim Gibb in 2021 and Malcolm Leader \$18,000 in 2022

Lot 26 TYCOLAH WALLY U153 (PP)

A/c: SR & TA Crowley

Ident: TPCU153

Born: 03/09/2023

Eye Pigment: 100/100

ALLENDALDE BINGARA K184 (P)
TYCOLAH QUEENSCLIFF N029 (PP)
TYCOLAH IRISH MAID J140 (P)

Sire: **TYCOLAH UNIVERSE S001 (PP)**

TYCOLAH HELL BENT (S)
WARARBA PARK JESSIE J93 (P)
WARARBA PARK JESSIE E124 (P)

COLUMBIAN SOUTHERN SON A18 (P)
WARARBA PARK FIRST CLASS F230 (S)
WARARBA PARK VICTORIA A94 (P)

Dam: **TYCOLAH GRACE J41 (P)**

KARINA CHERRY Z8 (PP)
TYCOLAH GRACE E67 (P)
TYCOLAH GRACE Y88 (P)



Purchaser:

Price \$:

May 2025 Hereford BREEDPLAN

GL	BW	200	400	600	MCW	Milk	SS	DC	Cwt	EMA	Rib	RUMP	RBY%	IMF%
-4.1	+5.8	+30	+54	+77	+89	+10	+1.3	-0.4	+43	+1.1	-0.2	+0.8	+0.7	-1.0
70%	78%	76%	75%	76%	65%	62%	75%	33%	59%	51%	54%	58%	46%	57%
7	85	75	70	65	15	94	90	97	90	99	90	65	60	99

Traits Observed: CE,BWT,200WT,400WT,Genomics

Genetic Tests: POLL C-Homozygous Polled (PcPc),IEF,HYF,DLF, **Parent Verification:** Sire: Verified, Dam: Not Tested

Notes: BW45KGS: Great head and eye with length and thickness on good bone. Dam has had 8 calves.

Lot 27 TYCOLAH WILLOW U095 (PP)

A/c: SR & TA Crowley

Ident: TPCU095

Born: 25/07/2023

Eye Pigment: 90/85

ALLENDAL E ANZAC E114 (PP)
CENTENNIAL ANZAC L055 (AI) (ET) (PP)
DUNOON PAGEANT G007 (P)

Sire: **TRURO SHOTGUN S008 (P)**

MERAWAH CADET F31 (P)
TRURO MAPLE J010 (H#)
TRURO MAPLE F031 (H#)

ALLENDAL E YALLAROI 2 (AI) (TW) (PP)
ALLENDAL E BINGARA K184 (P)
ALLENDAL E CORA C81 (P)

Dam: **TYCOLAH CORISANDE S080 (P)**

WARARBA PARK FIRST CLASS F230 (S)
TYCOLAH CORISANDE J98 (P)
TYCOLAH CORISANDE E122 (PP)



Purchaser:

Price \$:

May 2025 Hereford BREEDPLAN

GL	BW	200	400	600	MCW	Milk	SS	DC	Cwt	EMA	Rib	RUMP	RBY%	IMF%
+2.7	+6.7	+37	+57	+79	+68	+19	+2.6	-1.7	+46	+1.8	+1.0	+1.9	-0.7	+0.9
67%	76%	74%	72%	73%	62%	58%	73%	32%	56%	48%	51%	55%	42%	54%
97	92	40	60	60	50	40	35	90	80	97	45	30	98	45

Traits Observed: CE,BWT,200WT,400WT,Genomics

Genetic Tests: POLL C-Homozygous Polled (PcPc),IEF,HYF,DLF, Parent Verification: Sire: Verified, Dam: Not Tested

Notes: BW42kgs: A high yielding well muscled dark coloured bull typical of his sire. Can't fathom how Breedplan came up with his caracse figures.

Lot 28 TYCOLAH WELLINGTON U150 (PP)

A/c: SR & TA Crowley

Ident: TPCU150

Born: 01/09/2023

Eye Pigment: 100/95

DAYS WIZARD F84 (P)
THE RANCH TIPPERARY M005 (AI) (PP)
THE RANCH LAST DAY J38 (P)
Sire: **THE RANCH QUALIFIER Q033 (PP)**
HUNTER LAKES EXCELSIOR E26 (P)
GRASSY MOUNTAIN NOBLE GIRL 411 (P)
GRASSY MOUNTAIN NOBEL GIRL 062 (P)

TYCOLAH LYNWOOD H184 (P)
TYCOLAH OAKWOOD L26 (P)
TYCOLAH TESSIES FAVORITE E42 (P)

Dam: **TYCOLAH ADVANCE P098 (P)**

MCCOY 55M ABSOLUTE 49S (IMP CAN) (PP)
TYCOLAH ADVANCE K15 (AI) (P)
TYCOLAH ADVANCE G118 (H#)



Purchaser:

Price \$:

May 2025 Hereford BREEDPLAN

GL	BW	200	400	600	MCW	Milk	SS	DC	Cwt	EMA	Rib	RUMP	RBY%	IMF%
-1.9	+5.2	+39	+45	+64	+53	+18	+1.0	-1.1	+39	+3.3	-0.3	-0.3	+1.8	-0.8
68%	78%	75%	74%	75%	64%	58%	74%	30%	58%	49%	53%	58%	45%	55%
30	75	30	90	90	75	50	94	92	92	75	91	90	10	99

Traits Observed: CE,BWT,200WT,400WT,Genomics

Genetic Tests: POLL C-Homozygous Polled (PcPc),IEF,HYF,DLF, Parent Verification: Sire: Verified, Dam: Not Tested

Notes: BW38kgs: A good coloured correct bull with natural thickness. Good developed testicles.

THE COTTAGE BULLS

Lot 29 THE COTTAGE UNSTOPPABULL U005 (PP)

A/c: Tycolah Pastoral Co

Ident: CTGU005

Born: 17/07/2023

Eye Pigment: 100/100

ALLENDALE YALLAROI 2 (AI) (TW) (PP)

ALLENDALE BINGARA K184 (P)

ALLENDALE CORA C81 (P)

Sire: **TYCOLAH SINGLE SHOT Q032 (PP)**

SEAGROVE DYNAMO (P)

TYCOLAH MIN G84 (P)

TYCOLAH MIN D42 (P)

VALMA LINCOLN A27 (P)

VALMA FRONTLINE (AI) (P)

VALMA BOTH MOONSHINE A120 (PP)

Dam: **THE COTTAGE MARITANA L6 (P)**

CASCADE ZANETTI Z173 (P)

THE COTTAGE MARITANA D47 (P)

THE COTTAGE MARITANA Z18 (P)



Purchaser:

Price \$:

May 2025 Hereford BREEDPLAN

GL	BW	200	400	600	MCW	Milk	SS	DC	Cwt	EMA	Rib	RUMP	RBY%	IMF%
-4.1	+5.9	+35	+55	+79	+78	+4	+2.0	-0.4	+45	+2.3	-0.6	-0.9	+1.2	-0.2
65%	74%	72%	72%	73%	61%	57%	72%	28%	55%	45%	48%	53%	39%	51%
7	85	50	65	60	30	99	65	97	85	93	95	96	35	94

Traits Observed: 200WT,400WT,600WT,Genomics

Genetic Tests: POLL C-Homozygous Polled (PcPc),IEF,HYF,DLF, Parent Verification: Sire: Verified, Dam: Not Tested

Notes: A long, well muscled bull with real sire appeal. Out of a Maritana, consistently our best cow line.

Lot 30 THE COTTAGE UNANIMOUS U018 (P)

A/c: Tycolah Pastoral Co

Ident: CTGU018

Born: 19/08/2023

Eye Pigment: 100/100

INJEMIRA ANZAC H006 (PP)

INJEMIRA ANZAC H006 M187 AI (AI) (PP)

INJEMIRA PLUM E212 (P)

Sire: **ECLIPSE ANZAC H006 R007 (AI) (PP)**

KANIMBLA DYNAMIC M063 (AI) (PP)

KANIMBLA RENEE P098 (P)

KANIMBLA RENEE M117 (P)

CANNAWIGRA COMMANDER Z51 (S)

MOUNTAIN VALLEY GAMBLER G14 (P)

MOUNTAIN VALLEY B44 (P)

Dam: **MOUNTAIN VALLEY PRUDENCE S046 (P)**

GRASSMERE GALLANT 996 (P)

MOUNTAIN VALLEY PRUDENCE P095 (AI) (P)

MOUNTAIN VALLEY PRUDENCE K090 (AI) (ET)

(P)



Purchaser:

Price \$:

May 2025 Hereford BREEDPLAN

GL	BW	200	400	600	MCW	Milk	SS	DC	Cwt	EMA	Rib	RUMP	RBY%	IMF%
+0.1	+3.8	+35	+55	+71	+47	+14	+0.7	-4.2	+53	+2.5	+0.5	+1.0	+0.9	+0.2
69%	75%	73%	72%	74%	62%	58%	73%	32%	55%	48%	51%	55%	41%	54%
70	50	50	65	75	85	80	97	40	60	91	70	60	45	85

Traits Observed: 200WT,400WT,600WT,Genomics

Genetic Tests: POLL C-Heterozygous Polled (HPf),IEF,HYF,DLF, Parent Verification: Sire: Verified, Dam: Not Tested

Notes: A heifers first calf, born unassisted. Very correct, easy doing bull with a tremendous muscle pattern. Particularly quiet nature.

Lot 31**THE COTTAGE UNRIVALLED U024 (PP)****A/c: Tycolah Pastoral Co****Ident: CTGU024****Born: 25/08/2023****Eye Pigment: 100/100**

ALLENDALDE YALLAROI 2 (AI) (TW) (PP)
 ALLENDALDE BINGARA K184 (P)
 ALLENDALDE CORA C81 (P)

Sire: TYCOLAH SINGLE SHOT Q032 (PP)

SEAGROVE DYNAMO (P)
 TYCOLAH MIN G84 (P)
 TYCOLAH MIN D42 (P)

TYCOLAH LEGACY H142 (P)
 WARARBA PARK LOFTY L291 (PP)
 GLENARBA KIT KAT A24 (P)

Dam: TYCOLAH COUNTESS P095 (P)

KANIMBLA THRIFT SHOP J036 (PP)
 TYCOLAH COUNTESS L92 (P)
 TYCOLAH COUNTESS D84 (P)



Purchaser:

Price \$:

May 2025 Hereford BREEDPLAN

GL	BW	200	400	600	MCW	Milk	SS	DC	Cwt	EMA	Rib	RUMP	RBY%	IMF%
+0.1	+2.7	+27	+40	+46	+36	+11	+2.0	-4.7	+31	+3.3	+2.0	+3.4	-0.4	+1.3
67%	76%	74%	73%	74%	63%	59%	74%	31%	56%	48%	52%	56%	43%	55%
70	35	90	95	98	92	92	65	30	98	75	9	5	94	25

Traits Observed: 200WT,400WT,600WT,Genomics**Genetic Tests:** POLL C-Homozygous Polled (PcPc),IEF,HYF,DLF, **Parent Verification:** Sire: Verified, Dam: Not Tested**Notes:** Very smooth through the front shoulders, would be suitable for heifers. Note the low birth weight.**Lot 32****THE COTTAGE UTOPIA U031 (P)****A/c: Tycolah Pastoral Co****Ident: CTGU031****Born: 22/10/2023****Eye Pigment: 100/100**

INJEMIRA ANZAC H006 (PP)
 INJEMIRA ANZAC H006 M187 AI (AI) (PP)
 INJEMIRA PLUM E212 (P)

Sire: ECLIPSE ANZAC H006 R007 (AI) (PP)

KANIMBLA DYNAMIC M063 (AI) (PP)
 KANIMBLA RENEE P098 (P)
 KANIMBLA RENEE M117 (P)

COLUMBIAN SOUTHERN SON A18 (P)
 WARARBA PARK FIRST CLASS F230 (S)
 WARARBA PARK VICTORIA A94 (P)

Dam: TYCOLAH CHERRY M095 (TW) (P)

KARINA CHERRY Z8 (PP)
 TYCOLAH CHERRY E107 (P)
 TYCOLAH CHERRY W28 (P)



Purchaser:

Price \$:

May 2025 Hereford BREEDPLAN

GL	BW	200	400	600	MCW	Milk	SS	DC	Cwt	EMA	Rib	RUMP	RBY%	IMF%
-2.4	+3.2	+33	+52	+72	+50	+20	+1.7	-2.2	+46	+3.0	+0.2	+0.3	+1.5	+0.0
68%	75%	72%	72%	73%	62%	58%	73%	32%	56%	49%	51%	56%	42%	55%
25	40	60	75	75	80	35	75	80	80	85	80	80	20	90

Traits Observed: 200WT,400WT,600WT,Genomics**Genetic Tests:** POLL C-Heterozygous Polled (HPf),IEF,HYF,DLF, **Parent Verification:** Sire: Verified, Dam: Not Tested**Notes:** Born in October, a younger bull that keeps getting better. A great muscle pattern and confirmation.

AUTUMN DROP BULLS

Lot 33 TYCOLAH WARRIOR U092 (PP)

A/c: SR & TA Crowley

Ident: TPCU092

Born: 08/07/2023

Eye Pigment: 100/100

ALLENDAL E ANZAC E114 (PP)

CENTENNIAL ANZAC L055 (AI) (ET) (PP)

DUNOON PAGEANT G007 (P)

Sire: **TRURO SHOTGUN S008 (P)**

MERAWAH CADET F31 (P)

TRURO MAPLE J010 (H#)

TRURO MAPLE F031 (H#)

ALLENDAL E BINGARA K184 (P)

TYCOLAH QUEENSCLIFF N029 (PP)

TYCOLAH IRISH MAID J140 (P)

Dam: **TYCOLAH CLIMAX R007 (P)**

TYCOLAH INSPIRE E63 (S)

TYCOLAH CLIMAX H97 (P)

TYCOLAH CLIMAX C60 (AI) (P)

Purchaser:

Price \$:



May 2025 Hereford BREEDPLAN

GL	BW	200	400	600	MCW	Milk	SS	DC	Cwt	EMA	Rib	RUMP	RBY%	IMF%
+0.2	+6.5	+45	+79	+111	+99	+18	+4.0	-2.9	+80	+5.4	+1.2	+2.1	+1.1	+1.1
68%	77%	74%	73%	74%	63%	59%	73%	32%	56%	49%	51%	56%	42%	55%
75	90	7	4	4	7	50	4	70	3	25	35	25	40	35

Traits Observed: CE,BWT,200WT,400WT,Genomics

Genetic Tests: POLL C-Homozygous Polled (PcPc),IEF,HYF,DLF, **Parent Verification:** Sire: Verified, Dam: Not Tested

Notes: BW 39kgs: Heifers first calf. Unassisted, An excellent SHOTGUN calf. Beautifully balanced & well muscled with great skin & hair. He is out of a very promising young cow from a good cow line.

Lot 34 TYCOLAH WILDFIRE U082 (P)

A/c: SR & TA Crowley

Ident: TPCU082

Born: 01/07/2023

Eye Pigment: 100/100

ALLENDAL E ANZAC E114 (PP)

CENTENNIAL ANZAC L055 (AI) (ET) (PP)

DUNOON PAGEANT G007 (P)

Sire: **TRURO SHOTGUN S008 (P)**

MERAWAH CADET F31 (P)

TRURO MAPLE J010 (H#)

TRURO MAPLE F031 (H#)

ALLENDAL E BINGARA K184 (P)

TYCOLAH QUEENSCLIFF N029 (PP)

TYCOLAH IRISH MAID J140 (P)

Dam: **TYCOLAH URSULA R016 (P)**

WARARBA PARK FIRST CLASS F230 (S)

TYCOLAH URSULA M096 (PP)

TYCOLAH URSULA F159 (P)

Purchaser:

Price \$:



May 2025 Hereford BREEDPLAN

GL	BW	200	400	600	MCW	Milk	SS	DC	Cwt	EMA	Rib	RUMP	RBY%	IMF%
+1.6	+4.7	+32	+50	+71	+63	+17	+4.0	-2.4	+43	+3.5	+0.4	+0.6	+1.3	+0.2
69%	77%	75%	74%	74%	64%	59%	74%	33%	57%	50%	53%	57%	43%	56%
91	65	70	80	75	60	60	4	75	90	70	70	70	30	85

Traits Observed: CE,BWT,200WT,400WT,Genomics

Genetic Tests: POLL C-Heterozygous Polled (HPc),IEF,HYF,DLF, **Parent Verification:** Sire: Verified, Dam: Not Tested

Notes: BW 41kgs: Another SHOTGUN calf. Long and good fronted and carries himself well. His Granddam Ursula M096 has produced 3 Top sires in Secret Agent, Undercover S117 and Valiant T135

Lot 35 TYCOLAH WONDOOLA U075 (PP)

A/c: SR & TA Crowley

Ident: TPCU075

Born: 23/06/2023

Eye Pigment: 100/100

ALLENDALDE YALLAROI 2 (AI) (TW) (PP)

ALLENDALDE BINGARA K184 (P)

ALLENDALDE CORA C81 (P)

Sire: **TYCOLAH UNDOOLYA S022 (PP)**

TYCOLAH MAINSTAY J149 (PP)

TYCOLAH BESS N157 (P)

TYCOLAH BESS E101 (P)

COLUMBIAN SOUTHERN SON A18 (P)

WARARBA PARK FIRST CLASS F230 (S)

WARARBA PARK VICTORIA A94 (P)

Dam: **TYCOLAH CORISANDE J98 (P)**

KARINA CHERRY Z8 (PP)

TYCOLAH CORISANDE E122 (PP)

TYCOLAH CORISANDE B04 (P)



Purchaser:

Price \$:

May 2025 Hereford BREEDPLAN

GL	BW	200	400	600	MCW	Milk	SS	DC	Cwt	EMA	Rib	RUMP	RBY%	IMF%
-1.3	+9.4	+47	+70	+88	+83	+11	+2.9	-1.6	+52	+4.8	+0.0	+0.5	+1.4	+0.8
70%	78%	76%	75%	76%	66%	63%	76%	34%	59%	52%	55%	59%	47%	58%
40	99	4	20	35	25	92	25	90	65	35	85	75	25	50

Traits Observed: BWT,200WT,400WT,Genomics

Genetic Tests: POLL C-Homozygous Polled (PcPc),IEF,HYF,DLF, **Parent Verification:** Sire: Verified, Dam: Not Tested

Notes: BW 48kgs: A very long growthy Undoolya son out of the great Corisande J98. She has had 8 calves and weaned off a thumping 430kg heifer this year which was way ahead of the rest. If you want growth and yield this bloke will do it.

Lot 36 TYCOLAH WAT A TAT TAT U052 (S)

A/c: SR & TA Crowley

Ident: TPCU052

Born: 10/04/2023

Eye Pigment: 100/100

DAYS ELABORATE J59 (AI) (P)

GRATHLYN HOLYFIELD N019 (AI) (P)

GRATHLYN JEWESS L004 (AI) (PP)

Sire: **SUPPLE RAT A TAT TAT (PP)**

TYCOLAH KAPUTAR G27 (P)

SUPPLE ELMA 45 (P)

LINDENDALE ELMA 44 (P)

COLUMBIAN SOUTHERN SON A18 (P)

WARARBA PARK FIRST CLASS F230 (S)

WARARBA PARK VICTORIA A94 (P)

Dam: **TYCOLAH CHERRY N115 (P)**

KARINA CHERRY Z8 (PP)

TYCOLAH CHERRY E107 (P)

TYCOLAH CHERRY W28 (P)



Purchaser:

Price \$:

May 2025 Hereford BREEDPLAN

GL	BW	200	400	600	MCW	Milk	SS	DC	Cwt	EMA	Rib	RUMP	RBY%	IMF%
-1.6	+6.3	+40	+68	+90	+82	+13	+3.2	-1.8	+54	+4.0	-0.9	-0.6	+2.8	-1.7
67%	77%	74%	72%	74%	63%	58%	74%	32%	57%	50%	53%	57%	45%	55%
35	90	25	20	35	25	85	15	85	60	60	98	93	1	99

Traits Observed: BWT,200WT,600WT,Genomics

Genetic Tests: IEF,HYF,DLF, **Parent Verification:** Sire: Verified, Dam: Not Tested

Notes: BW 40kgs: A dark coloured very well muscled bull with a big set of testicles.

Lot 37 TYCOLAH WARREN U081 (S)

A/c: SR & TA Crowley

Ident: TPCU081

Born: 29/06/2023

Eye Pigment: 100/100

ALLENDAL E ANZAC E114 (PP)
CENTENNIAL ANZAC L055 (AI) (ET) (PP)
DUNOON PAGEANT G007 (P)

Sire: **TRURO SHOTGUN S008 (P)**

MERAWAH CADET F31 (P)
TRURO MAPLE J010 (H#)
TRURO MAPLE F031 (H#)

ALLENDAL E YALLAROI 2 (AI) (TW) (PP)
ALLENDAL E BINGARA K184 (P)
ALLENDAL E CORA C81 (P)

Dam: **TYCOLAH ADVANCE Q120 (P)**

WARARBA PARK FIRST CLASS F230 (S)
TYCOLAH ADVANCE K128 (P)
TYCOLAH ADVANCE F110 (P)



Purchaser:

Price \$:

May 2025 Hereford BREEDPLAN

GL	BW	200	400	600	MCW	Milk	SS	DC	Cwt	EMA	Rib	RUMP	RBY%	IMF%
-1.2	+8.9	+55	+88	+127	+125	+20	+5.3	-2.7	+80	+5.1	-0.2	-0.1	+1.5	+1.1
67%	76%	74%	73%	74%	63%	59%	73%	33%	56%	49%	52%	57%	43%	55%
45	99	1	1	1	1	35	1	70	3	30	90	90	20	35

Traits Observed: BWT,200WT,400WT,Genomics

Genetic Tests: IEF,HYF,DLF, Parent Verification: Sire: Verified, Dam: Not Tested

Notes: BW 47kgs: Another dark coloured well muscled, good skinned bull with a big set of testicles. Will add muscle and growth.

Lot 38 TYCOLAH WARBLER U038 (TW) (PP)

A/c: SR & TA Crowley

Ident: TPCU038

Born: 25/03/2023

Eye Pigment: 100/100

DAYS WIZARD F84 (P)
THE RANCH TIPPERARY M005 (AI) (PP)
THE RANCH LAST DAY J38 (P)
Sire: **THE RANCH QUALIFIER Q033 (PP)**
HUNTER LAKES EXCELSIOR E26 (P)
GRASSY MOUNTAIN NOBLE GIRL 411 (P)
GRASSY MOUNTAIN NOBEL GIRL 062 (P)

COLUMBIAN SOUTHERN SON A18 (P)
WARARBA PARK FIRST CLASS F230 (S)
WARARBA PARK VICTORIA A94 (P)

Dam: **TYCOLAH ADVANCE M116 (P)**

SEAGROVE DYNAMO (P)
TYCOLAH ADVANCE G64 (P)
TYCOLAH ADVANCE E06 (P)



Purchaser:

Price \$:

May 2025 Hereford BREEDPLAN

GL	BW	200	400	600	MCW	Milk	SS	DC	Cwt	EMA	Rib	RUMP	RBY%	IMF%
-4.4	+6.8	+43	+65	+93	+97	+13	+0.9	+0.7	+55	+1.4	-0.4	+0.1	+0.6	+0.1
67%	76%	74%	72%	74%	62%	57%	73%	30%	57%	49%	52%	56%	43%	54%
6	93	15	30	25	8	85	96	99	55	99	92	85	60	85

Traits Observed: 200WT,600WT,Genomics

Genetic Tests: POLL C-Homozygous Polled (PcPc),IEF,HYF,DLF, Parent Verification: Sire: Verified, Dam: Verified

Notes: A very long dark growthy bull with a good head and eye. Twin to a heifer. Dam has also produced Volcano T060 who sold for \$18,000 to Pam & Lyn Vering Glen Goulburn Stud and has gone on very well.

Lot 39**TYCOLAH WINCHESTER U074 (PP)****A/c: SR & TA Crowley****Ident: TPCU074****Born: 21/06/2023****Eye Pigment: 100/100**

DAYS ELABORATE J59 (AI) (P)
 GRATHLYN HOLYFIELD N019 (AI) (P)
 GRATHLYN JEWESS L004 (AI) (PP)

Sire: SUPPLE RAT A TAT TAT (PP)

TYCOLAH KAPUTAR G27 (P)
 SUPPLE ELMA 45 (P)
 LINDENDALE ELMA 44 (P)

CANNAWIGRA COMMANDER Z51 (S)
 MOUNTAIN VALLEY LEIUTENANT L1 (P)
 MOUNTAIN VALLEY VICTORIA F17 (P)

Dam: TYCOLAH ROMA N198 (P)

KARINA CHERRY Z8 (PP)
 TYCOLAH ROMA C22 (P)
 TYCOLAH ROMA Y45 (P)



Purchaser:

Price \$:

May 2025 Hereford BREEDPLAN

GL	BW	200	400	600	MCW	Milk	SS	DC	Cwt	EMA	Rib	RUMP	RBY%	IMF%
+1.1	+6.2	+37	+63	+73	+50	+17	+3.6	-6.2	+45	+5.0	+1.5	+2.1	+1.0	+0.1
67%	77%	74%	73%	74%	63%	58%	75%	32%	57%	51%	53%	57%	45%	56%
90	90	40	35	75	80	60	8	9	85	35	25	25	40	85

Traits Observed: BWT,200WT,400WT,Genomics**Genetic Tests:** POLL C-Homozygous Polled (PcPc),IEF,HYF,DLF, **Parent Verification:** Sire: Verified, Dam: Not Tested**Notes:** BW 40kgs: A typical Rat aTat Tat out of a good milking cow. Dark and correct structured. Dam had a bull sell to PC Pastoral South Aust last year.**Lot 40****TYCOLAH WYOMING U088 (PP)****A/c: SR & TA Crowley****Ident: TPCU088****Born: 06/07/2023****Eye Pigment: 100/100**

BLAIR-ATHOL 13K MAJOR 101N (P)
 BBSF 101N WRANGLER 29W (IMP CAN) (PP)
 BBSF 19D UNIQUE 1P (P)

Sire: TYCOLAH UNDERHAND S067 (AI) (ET) (PP)

KARINA CHERRY Z8 (PP)
 TYCOLAH MARSHALL LASS D49 (P)
 TYCOLAH MARSHALL LASS V89 (P)

MOUNTAIN VALLEY LEIUTENANT L1 (P)
 TYCOLAH QUARTERBACK N134 (P)
 TYCOLAH ADVANCE H196 (P)

Dam: TYCOLAH COUNTESS R013 (P)

ALLENDALE BINGARA K184 (P)
 TYCOLAH COUNTESS N028 (P)
 TYCOLAH COUNTESS G106 (AI) (ET) (P)



Purchaser:

Price \$:

May 2025 Hereford BREEDPLAN

GL	BW	200	400	600	MCW	Milk	SS	DC	Cwt	EMA	Rib	RUMP	RBY%	IMF%
-3.5	+0.5	+27	+48	+59	+39	+19	+2.5	-4.7	+47	+3.9	+1.5	+2.7	+0.1	+1.3
66%	76%	73%	72%	73%	61%	57%	72%	30%	55%	47%	50%	54%	40%	53%
15	8	90	85	91	90	40	40	30	80	60	25	15	85	25

Traits Observed: CE,BWT,200WT,400WT,Genomics**Genetic Tests:** POLL C-Homozygous Polled (PcPc),IEF,HYF,DLF, **Parent Verification:** Sire: Verified, Dam: Not Tested**Notes:** BW 33kgs: A heifer bull with a well laid in shoulder and good sheath. Very correct structured.

Lot 41 TYCOLAH WESTY U049 (PP)

A/c: SR & TA Crowley

Ident: TPCU049

Born: 02/04/2023

Eye Pigment: 100/90

DAYS WIZARD F84 (P)
THE RANCH TIPPERARY M005 (AI) (PP)
THE RANCH LAST DAY J38 (P)
Sire: **THE RANCH QUALIFIER Q033 (PP)**
HUNTER LAKES EXCELSIOR E26 (P)
GRASSY MOUNTAIN NOBLE GIRL 411 (P)
GRASSY MOUNTAIN NOBEL GIRL 062 (P)

MCCOY 3J MATADOR 55M (P)
MCCOY 55M ABSOLUTE 49S (IMP CAN) (PP)
MCCOY 58G CONNIE 119L (P)

Dam: **TYCOLAH BONNIE MIXER L39 (AI) (TW) (P)**

TYCOLAH INSPIRE E63 (S)
TYCOLAH BONNIE MIXER H21 (P)
TYCOLAH BONNIE MIXER C107 (P)



Purchaser:

Price \$:

May 2025 Hereford BREEDPLAN														
GL	BW	200	400	600	MCW	Milk	SS	DC	Cwt	EMA	Rib	RUMP	RBY%	IMF%
+0.7	+4.7	+30	+45	+64	+68	+13	+1.9	-0.3	+40	+2.4	-0.7	-1.2	+0.8	-0.1
67%	77%	74%	72%	74%	62%	58%	74%	30%	56%	49%	51%	56%	43%	54%
80	65	75	90	90	50	85	70	98	91	92	96	98	50	91

Traits Observed: BWT,200WT,600WT,Genomics

Genetic Tests: POLL C-Homozygous Polled (PcPc),IEF,HYF,DLF, **Parent Verification:** Sire: Verified, Dam: Not Tested

Notes: BW 36kgs: Another dark coloured good correct heifer bull out of a good old cow still in the herd.

Lot 42 TYCOLAH WELLGROVE U021 (PP)

A/c: SR & TA Crowley

Ident: TPCU021

Born: 10/03/2023

Eye Pigment: 100/100

DAYS WIZARD F84 (P)
THE RANCH TIPPERARY M005 (AI) (PP)
THE RANCH LAST DAY J38 (P)
Sire: **THE RANCH QUALIFIER Q033 (PP)**
HUNTER LAKES EXCELSIOR E26 (P)
GRASSY MOUNTAIN NOBLE GIRL 411 (P)
GRASSY MOUNTAIN NOBEL GIRL 062 (P)

TYCOLAH LYNWOOD H184 (P)
TYCOLAH OAKWOOD L26 (P)
TYCOLAH TESSIES FAVORITE E42 (P)

Dam: **TYCOLAH CORISANDE P030 (P)**

TYCOLAH JOVIAL F77 (PP)
TYCOLAH CORISANDE H79 (P)
TYCOLAH CORISANDE C17 (P)



Purchaser:

Price \$:

May 2025 Hereford BREEDPLAN														
GL	BW	200	400	600	MCW	Milk	SS	DC	Cwt	EMA	Rib	RUMP	RBY%	IMF%
+0.5	+5.0	+32	+41	+56	+51	+17	+1.8	-1.2	+30	+2.7	-1.1	-1.4	+1.9	-1.0
69%	78%	76%	74%	76%	64%	60%	75%	31%	58%	50%	54%	58%	45%	56%
80	70	70	95	94	80	60	75	91	99	90	99	98	9	99

Traits Observed: CE,BWT,200WT,600WT,Genomics

Genetic Tests: POLL C-Homozygous Polled (PcPc),IEF,HYF,DLF, **Parent Verification:** Sire: Verified, Dam: Not Tested

Notes: BW 41kgs: A long growthy bull with a good head.

Lot 43 TYCOLAH WISTFUL U026 (PP)

A/c: SR & TA Crowley

Ident: TPCU026

Born: 13/03/2023

Eye Pigment: 100/100

DAYS WIZARD F84 (P)
THE RANCH TIPPERARY M005 (AI) (PP)
THE RANCH LAST DAY J38 (P)
Sire: **THE RANCH QUALIFIER Q033 (PP)**
HUNTER LAKES EXCELSIOR E26 (P)
GRASSY MOUNTAIN NOBLE GIRL 411 (P)
GRASSY MOUNTAIN NOBEL GIRL 062 (P)

VALMA NAPOLEON II (AI) (P)
VALMA PRESTIGE E60 (P)
VALMA SILVER'S CORISANDE (AI) (P)

Dam: **TYCOLAH PERSONAL K103 (P)**

VALMA LOCH A100 (P)
TYCOLAH PERSONAL D15 (P)
TYCOLAH PERSONAL Y12 (P)



Purchaser:

Price \$:

May 2025 Hereford BREEDPLAN														
GL	BW	200	400	600	MCW	Milk	SS	DC	Cwt	EMA	Rib	RUMP	RBY%	IMF%
+0.5	+5.4	+38	+49	+66	+52	+20	+3.2	-3.4	+43	+3.6	+0.1	-0.3	+0.9	+0.4
69%	78%	75%	73%	75%	63%	59%	75%	31%	57%	50%	53%	58%	45%	55%
80	80	35	85	85	75	35	15	60	90	70	85	90	45	75

Traits Observed: BWT,200WT,600WT,Genomics

Genetic Tests: POLL C-Homozygous Polled (PcPf),IEF,HYF,DLF, **Parent Verification:** Sire: Verified, Dam: Not Tested

Notes: BW37kgs: A long bodied good skinned bull on good bone.

Lot 44 TYCOLAH WALKER U046 (PP)

A/c: SR & TA Crowley

Ident: TPCU046

Born: 31/03/2023

Eye Pigment: 100/100

ALLENDAL BINGARA K184 (P)
TYCOLAH QUEENSCLIFF N029 (PP)
TYCOLAH IRISH MAID J140 (P)
Sire: **TYCOLAH UNIVERSE S001 (PP)**
TYCOLAH HELL BENT (S)
WARARBA PARK JESSIE J93 (P)
WARARBA PARK JESSIE E124 (P)

ALLENDAL YALLAROI 2 (AI) (TW) (PP)
ALLENDAL BINGARA K184 (P)
ALLENDAL CORA C81 (P)

Dam: **TYCOLAH COUNTESS Q095 (P)**

VALMA PRESTIGE E60 (P)
TYCOLAH COUNTESS H100 (P)
TYCOLAH COUNTESS B100 (P)



Purchaser:

Price \$:

May 2025 Hereford BREEDPLAN														
GL	BW	200	400	600	MCW	Milk	SS	DC	Cwt	EMA	Rib	RUMP	RBY%	IMF%
+2.2	+4.0	+27	+46	+70	+57	+17	+0.9	-1.6	+46	+3.5	+0.8	+1.6	+0.4	+0.8
69%	78%	75%	74%	76%	64%	60%	74%	32%	58%	50%	53%	58%	45%	56%
95	55	90	90	80	70	60	96	90	80	70	55	40	70	50

Traits Observed: BWT,200WT,600WT,Genomics

Genetic Tests: POLL C-Homozygous Polled (PcPc),IEF,HYF,DLF, **Parent Verification:** Sire: Verified, Dam: Not Tested

Notes: BW 39kgs: Another good coloured well muscled Universe son.

Lot 45 TYCOLAH WORKER U048 (PP)

A/c: SR & TA Crowley

Ident: TPCU048

Born: 01/04/2023

Eye Pigment: 100/100

DAYS WIZARD F84 (P)
THE RANCH TIPPERARY M005 (AI) (PP)
THE RANCH LAST DAY J38 (P)
Sire: **THE RANCH QUALIFIER Q033 (PP)**
HUNTER LAKES EXCELSIOR E26 (P)
GRASSY MOUNTAIN NOBLE GIRL 411 (P)
GRASSY MOUNTAIN NOBEL GIRL 062 (P)
WARARBA PARK FIRST CLASS F230 (S)
TYCOLAH PRIZE FIGHTER M092 (PP)
TYCOLAH CORISANDE G32 (P)
Dam: **TYCOLAH COUNTESS Q078 (P)**
TYCOLAH JOVIAL F77 (PP)
TYCOLAH COUNTESS L88 (AI) (P)
TYCOLAH COUNTESS A143 (AI) (ET) (P)



Purchaser:

Price \$:

May 2025 Hereford BREEDPLAN														
GL	BW	200	400	600	MCW	Milk	SS	DC	Cwt	EMA	Rib	RUMP	RBV%	IMF%
+0.0	+5.7	+36	+40	+52	+44	+25	+1.3	-0.8	+28	+1.5	-1.0	-1.3	+1.2	-0.1
68%	77%	75%	73%	75%	63%	58%	74%	31%	57%	50%	53%	58%	45%	55%
70	80	45	95	96	85	8	90	95	99	99	98	98	35	91

Traits Observed: BWT,200WT,600WT,Genomics

Genetic Tests: POLL C-Homozygous Polled (PcPc),IEF,HYF,DLF, **Parent Verification:** Sire: Verified, Dam: Not Tested

Notes: BW 39kgs: A correct good shouldered bull with a moderate birthweight.

SPRING DROP BULLS

Lot 46 TYCOLAH WATCHFUL U177 (PP)

A/c: SR & TA Crowley

Ident: TPCU177

Born: 10/10/2023

Eye Pigment: 100/100

BLAIR-ATHOL 13K MAJOR 101N (P)
BBSF 101N WRANGLER 29W (IMP CAN) (PP)
BBSF 19D UNIQUE 1P (P)
Sire: **TYCOLAH UNDERHAND S067 (AI) (ET) (PP)**
KARINA CHERRY Z8 (PP)
TYCOLAH MARSHALL LASS D49 (P)
TYCOLAH MARSHALL LASS V89 (P)
KARINA CHERRY Z8 (PP)
TYCOLAH JOVIAL F77 (PP)
TYCOLAH COUNTESS W48 (P)
Dam: **TYCOLAH COUNTESS L88 (AI) (P)**
ALLENDALE KING KONG 2 (S)
TYCOLAH COUNTESS A143 (AI) (ET) (P)
TYCOLAH COUNTESS V60 (P)



Purchaser:

Price \$:

May 2025 Hereford BREEDPLAN														
GL	BW	200	400	600	MCW	Milk	SS	DC	Cwt	EMA	Rib	RUMP	RBV%	IMF%
-0.3	+2.9	+28	+42	+53	+43	+19	+0.2	+1.0	+36	+4.9	+0.1	-0.2	+1.3	-0.1
71%	78%	76%	75%	76%	65%	62%	76%	35%	59%	52%	55%	59%	47%	57%
65	35	85	93	96	90	40	99	99	95	35	85	90	30	91

Traits Observed: CE,BWT,200WT,400WT,Genomics

Genetic Tests: POLL C-Homozygous Polled (PcPf),IEF,HYF,DLF, **Parent Verification:** Sire: Verified, Dam: Not Tested

Notes: BW 41kgs: Only an October calf out of a good old Jovial cow. Long, deep bodied and easy-doing with a good head and eye.

Lot 47 TYCOLAH WALSH U105 (S)

A/c: SR & TA Crowley

Ident: TPCU105

Born: 07/08/2023

Eye Pigment: 100/100

BLAIR-ATHOL 13K MAJOR 101N (P)
BBSF 101N WRANGLER 29W (IMP CAN) (PP)
BBSF 19D UNIQUE 1P (P)

Sire: **TYCOLAH UNDERHAND S067 (AI) (ET) (PP)**

KARINA CHERRY Z8 (PP)
TYCOLAH MARSHALL LASS D49 (P)
TYCOLAH MARSHALL LASS V89 (P)

ALLENDALDE BINGARA K184 (P)
TYCOLAH QUEENSCLIFF N029 (PP)
TYCOLAH IRISH MAID J140 (P)

Dam: **TYCOLAH CLIMAX R063 (P)**

WARARBA PARK FIRST CLASS F230 (S)
TYCOLAH CLIMAX M087 (H#)
TYCOLAH CLIMAX H124 (P)

Purchaser:

Price \$:



May 2025 Hereford BREEDPLAN

GL	BW	200	400	600	MCW	Milk	SS	DC	Cwt	EMA	Rib	RUMP	RBY%	IMF%
-0.4	+3.7	+33	+52	+73	+54	+17	+0.3	+0.3	+54	+4.2	+0.8	+1.4	+0.9	+0.4
68%	77%	74%	73%	74%	63%	59%	73%	32%	56%	48%	52%	56%	43%	55%
60	50	60	75	75	75	60	99	99	60	50	55	45	45	75

Traits Observed: CE,BWT,200WT,400WT,Genomics

Genetic Tests: IEF,HYF,DLF, Parent Verification: Sire: Verified, Dam: Not Tested

Notes: BW 42kgs: A rich coloured, well structured good headed bull.

Lot 48 TYCOLAH WAYWARD U167 (PP)

A/c: SR & TA Crowley

Ident: TPCU167

Born: 27/09/2023

Eye Pigment: 100/100

ALLENDALDE BINGARA K184 (P)
TYCOLAH QUEENSCLIFF N029 (PP)
TYCOLAH IRISH MAID J140 (P)

Sire: **TYCOLAH UNIVERSE S001 (PP)**

TYCOLAH HELL BENT (S)
WARARBA PARK JESSIE J93 (P)
WARARBA PARK JESSIE E124 (P)

COLUMBIAN SOUTHERN SON A18 (P)
WARARBA PARK FIRST CLASS F230 (S)
WARARBA PARK VICTORIA A94 (P)

Dam: **TYCOLAH BONNIE J74 (P)**

KARINA CHERRY Z8 (PP)
TYCOLAH BONNIE E96 (P)
TYCOLAH BONNIE Y72 (P)

Purchaser:

Price \$:



May 2025 Hereford BREEDPLAN

GL	BW	200	400	600	MCW	Milk	SS	DC	Cwt	EMA	Rib	RUMP	RBY%	IMF%
+0.4	+5.6	+31	+52	+81	+78	+13	+1.3	-3.6	+50	+3.2	+1.3	+2.2	+0.9	-0.3
69%	78%	76%	74%	75%	65%	62%	74%	33%	58%	50%	54%	58%	46%	57%
75	80	75	75	55	30	85	90	55	70	80	30	25	45	96

Traits Observed: CE,BWT,200WT,400WT,Genomics

Genetic Tests: POLL C-Homozygous Polled (PcPc),IEF,HYF,DLF, Parent Verification: Sire: Verified, Dam: Not Tested

Notes: BW 41kgs: Another good skinned good headed bull out of a good old cow.

Lot 49 TYCOLAH WILL U165 (TW) (S)

A/c: SR & TA Crowley

Ident: TPCU165

Born: 25/09/2023

Eye Pigment: 100/100

BLAIR-ATHOL 13K MAJOR 101N (P)
BBSF 101N WRANGLER 29W (IMP CAN) (PP)
BBSF 19D UNIQUE 1P (P)

Sire: **TYCOLAH UNDERHAND S067 (AI) (ET) (PP)**

KARINA CHERRY Z8 (PP)
TYCOLAH MARSHALL LASS D49 (P)
TYCOLAH MARSHALL LASS V89 (P)

COLUMBIAN SOUTHERN SON A18 (P)
WARARBA PARK FIRST CLASS F230 (S)
WARARBA PARK VICTORIA A94 (P)

Dam: **TYCOLAH CLIMAX M087 (H#)**

TYCOLAH INSPIRE E63 (S)
TYCOLAH CLIMAX H124 (P)
TYCOLAH CLIMAX V50 (P)



Purchaser:

Price \$:

May 2025 Hereford BREEDPLAN														
GL	BW	200	400	600	MCW	Milk	SS	DC	Cwt	EMA	Rib	RUMP	RBY%	IMF%
-2.1	+2.0	+23	+35	+48	+50	+8	+0.6	-1.1	+32	+1.9	+0.4	+0.5	+0.2	+0.4
69%	78%	75%	74%	75%	64%	62%	74%	33%	58%	50%	53%	57%	45%	56%
30	25	95	98	98	80	98	98	92	98	97	70	75	80	75

Traits Observed: BWT,200WT,400WT,Genomics

Genetic Tests: IEF,HYF,DLF, **Parent Verification:** Sire: Not Verified, Dam: Verified

Notes: BW 33kgs: A rich coloured bull with a good top & natural thickness. Should suit heifers.

Lot 50 TYCOLAH WINGMAN U147 (PP)

A/c: SR & TA Crowley

Ident: TPCU147

Born: 29/08/2023

Eye Pigment: 100/100

ALLENDALDE BINGARA K184 (P)
TYCOLAH QUEENSCLIFF N029 (PP)
TYCOLAH IRISH MAID J140 (P)

Sire: **TYCOLAH UNIVERSE S001 (PP)**

TYCOLAH HELL BENT (S)
WARARBA PARK JESSIE J93 (P)
WARARBA PARK JESSIE E124 (P)

SOUTH BUKALONG WALLACE 2 (P)
GLENTREVOR WALLACE H427 (AI) (PP)
GLENTREVOR MARITANA F240 (P)

Dam: **COURALLIE MARIANNE M540 (AI) (P)**

COURALLIE BENTLEY E204 AI P (AI) (P)
COURALLIE MARIANNE K578 (AI) (P)
COURALLIE D1 MARIANNE H020 (AI) (P)



Purchaser:

Price \$:

May 2025 Hereford BREEDPLAN														
GL	BW	200	400	600	MCW	Milk	SS	DC	Cwt	EMA	Rib	RUMP	RBY%	IMF%
+0.4	+6.8	+36	+60	+90	+93	+11	+1.8	-4.4	+61	+3.2	+1.2	+2.6	+0.9	-0.4
70%	77%	75%	74%	75%	64%	61%	74%	34%	58%	51%	53%	57%	43%	57%
75	93	45	50	35	15	92	75	40	35	80	35	15	45	97

Traits Observed: CE,BWT,200WT,400WT,Genomics

Genetic Tests: POLL C-Homozygous Polled (PcPc),IEF,HYF,DLF, **Parent Verification:** Sire: Verified, Dam: Not Tested

Notes: BW 41kgs: A very long growthy bull out of a cow who has left us with a good line of females.

Lot 51 TYCOLAH WAIVER U124 (S)

A/c: SR & TA Crowley

Ident: TPCU124

Born: 18/08/2023

Eye Pigment: 100/100

ALLENDAL E ANZAC E114 (PP)
CENTENNIAL ANZAC L055 (AI) (ET) (PP)
DUNOON PAGEANT G007 (P)

Sire: **TRURO SHOTGUN S008 (P)**

MERAWAH CADET F31 (P)
TRURO MAPLE J010 (H#)
TRURO MAPLE F031 (H#)

ALLENDAL E BINGARA K184 (P)
TYCOLAH QUEENSCLIFF N029 (PP)
TYCOLAH IRISH MAID J140 (P)

Dam: **TYCOLAH CORISANDE R024 (P)**

WARARBA PARK FIRST CLASS F230 (S)
TYCOLAH CORISANDE M081 (P)
TYCOLAH CORISANDE E122 (PP)

Purchaser:

Price \$:



May 2025 Hereford BREEDPLAN

GL	BW	200	400	600	MCW	Milk	SS	DC	Cwt	EMA	Rib	RUMP	RBY%	IMF%
-1.5	+7.0	+50	+80	+113	+102	+21	+3.5	-2.9	+78	+4.6	-0.1	+0.2	+0.9	+1.0
68%	77%	74%	73%	74%	63%	59%	74%	33%	56%	49%	51%	56%	42%	55%
40	94	2	4	4	5	30	10	70	4	40	90	80	45	40

Traits Observed: CE,BWT,200WT,400WT,Genomics

Genetic Tests: IEF,HYF,DLF, Parent Verification: Sire: Verified, Dam: Not Tested

Notes: BW 44kgs: A rich coloured good growth well muscled bull. Granddam is the mother of Tycolah Volume who sold to Mills Poll Herefords for \$24,000

Lot 52 TYCOLAH WIMBLEDON U118 (PP)

A/c: SR & TA Crowley

Ident: TPCU118

Born: 15/08/2023

Eye Pigment: 100/100

DAYS WIZARD F84 (P)
THE RANCH TIPPERARY M005 (AI) (PP)
THE RANCH LAST DAY J38 (P)
Sire: **THE RANCH QUALIFIER Q033 (PP)**
HUNTER LAKES EXCELSIOR E26 (P)
GRASSY MOUNTAIN NOBLE GIRL 411 (P)
GRASSY MOUNTAIN NOBEL GIRL 062 (P)

ALLENDAL E YALLAROI 2 (AI) (TW) (PP)
ALLENDAL E BINGARA K184 (P)
ALLENDAL E CORA C81 (P)

Dam: **TYCOLAH COUNTESS N028 (P)**

ALLENDAL E NATIONAL W168 (PP)
TYCOLAH COUNTESS G106 (AI) (ET) (P)
TYCOLAH COUNTESS B10 (P)

Purchaser:

Price \$:



May 2025 Hereford BREEDPLAN

GL	BW	200	400	600	MCW	Milk	SS	DC	Cwt	EMA	Rib	RUMP	RBY%	IMF%
-4.2	+3.8	+33	+45	+56	+56	+14	+2.8	-2.1	+38	+2.0	-0.3	-0.4	+1.1	+0.0
68%	78%	75%	74%	75%	64%	59%	74%	33%	58%	50%	53%	57%	44%	55%
7	50	60	90	94	70	80	30	80	94	96	91	91	40	90

Traits Observed: CE,BWT,200WT,400WT,Genomics

Genetic Tests: POLL C-Homozygous Polled (PcPc),IEF,HYF,DLF, Parent Verification: Sire: Verified, Dam: Not Tested

Notes: BW 38kgs: A good headed rich coloured bull . Good testicles.

Lot 53 TYCOLAH WELLTREE U138 (PP)

A/c: SR & TA Crowley

Ident: TPCU138

Born: 26/08/2023

Eye Pigment: 100/100

BLAIR-ATHOL 13K MAJOR 101N (P)
BBSF 101N WRANGLER 29W (IMP CAN) (PP)
BBSF 19D UNIQUE 1P (P)

Sire: **TYCOLAH UNDERHAND S067 (AI) (ET) (PP)**

KARINA CHERRY Z8 (PP)
TYCOLAH MARSHALL LASS D49 (P)
TYCOLAH MARSHALL LASS V89 (P)

ALLENDALDE YALLARO 2 (AI) (TW) (PP)
ALLENDALDE BINGARA K184 (P)
ALLENDALDE CORA C81 (P)

Dam: **TYCOLAH IRISH MAID S078 (P)**

WARARBA PARK FIRST CLASS F230 (S)
TYCOLAH IRISH MAID J140 (P)
SEVENBARDOT IRISH MAID F39 (P)



Purchaser:

Price \$:

May 2025 Hereford BREEDPLAN

GL	BW	200	400	600	MCW	Milk	SS	DC	Cwt	EMA	Rib	RUMP	RBY%	IMF%
-0.9	+2.5	+29	+43	+67	+52	+8	+0.7	-1.0	+46	+3.4	+0.8	+1.5	-0.2	+1.0
69%	77%	74%	73%	74%	63%	60%	74%	33%	57%	49%	52%	57%	44%	56%
50	30	80	92	85	75	98	97	93	80	75	55	40	91	40

Traits Observed: CE,BWT,200WT,400WT,Genomics

Genetic Tests: POLL C-Homozygous Polled (PcPf),IEF,HYF,DLF, **Parent Verification:** Sire: Verified, Dam: Not Tested

Notes: BW 40kgs: A long bull on good bone with good hooded eyes. His Dam is showing a lot of promise and is a full sister to Tycolah Queenscliff N029

Lot 54 TYCOLAH WELL HELLO U156 (P)

A/c: SR & TA Crowley

Ident: TPCU156

Born: 05/09/2023

Eye Pigment: 100/100

ALLENDALDE BINGARA K184 (P)
TYCOLAH QUEENSCLIFF N029 (PP)
TYCOLAH IRISH MAID J140 (P)

Sire: **TYCOLAH UNIVERSE S001 (PP)**

TYCOLAH HELL BENT (S)
WARARBA PARK JESSIE J93 (P)
WARARBA PARK JESSIE E124 (P)

COLUMBIAN SOUTHERN SON A18 (P)
WARARBA PARK FIRST CLASS F230 (S)
WARARBA PARK VICTORIA A94 (P)

Dam: **TYCOLAH MISS GUNN L103 (P)**

TYCOLAH COBBADAH (P)
KIDMAN MISS GUNN B244 (P)
KIDMAN MISS GUNN Y62 (P)



Purchaser:

Price \$:

May 2025 Hereford BREEDPLAN

GL	BW	200	400	600	MCW	Milk	SS	DC	Cwt	EMA	Rib	RUMP	RBY%	IMF%
-2.1	+2.3	+24	+46	+65	+69	+17	+0.1	+0.5	+41	+2.8	-0.9	-1.0	+2.0	-1.3
69%	78%	75%	74%	75%	64%	61%	74%	33%	58%	50%	54%	58%	45%	57%
30	30	94	90	85	50	60	99	99	90	85	98	96	7	99

Traits Observed: CE,BWT,200WT,400WT,Genomics

Genetic Tests: IEF,HYF,DLF, **Parent Verification:** Sire: Verified, Dam: Not Tested

Notes: BW 37kgs: Another good headed correct structured middle of the road bull. A half brother sold for \$12,000 in last years sale to Oakview.

Lot 55 TYCOLAH WOBEGONG U175 (PP)

A/c: SR & TA Crowley

Ident: TPCU175

Born: 09/10/2023

Eye Pigment: 45/100

ALLEDALE YALLAROI 2 (AI) (TW) (PP)

ALLEDALE BINGARA K184 (P)

ALLEDALE CORA C81 (P)

Sire: **TYCOLAH UNDOOLYA S022 (PP)**

TYCOLAH MAINSTAY J149 (PP)

TYCOLAH BESS N157 (P)

TYCOLAH BESS E101 (P)

MERAWAH EXPORT F21 (P)

KANIMBLA THRIFT SHOP J036 (PP)

MT RAVEN SHAMROCK D312 (P)

Dam: **TYCOLAH COUNTESS M148 (P)**

VALMA PRESTIGE E60 (P)

TYCOLAH COUNTESS J119 (P)

TYCOLAH COUNTESS B100 (P)



Purchaser:

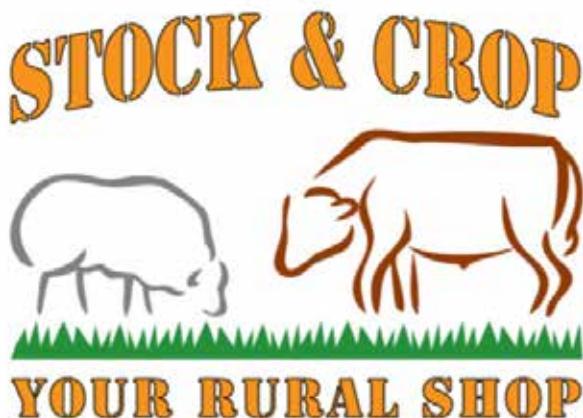
Price \$:

May 2025 Hereford BREEDPLAN														
GL	BW	200	400	600	MCW	Milk	SS	DC	Cwt	EMA	Rib	RUMP	RBY%	IMF%
+0.4	+3.9	+28	+44	+50	+50	+5	+2.4	-3.7	+29	+2.1	+0.4	+0.5	-0.5	+0.9
69%	77%	75%	74%	75%	64%	61%	75%	33%	57%	50%	53%	58%	44%	56%
75	55	85	91	97	80	99	45	50	99	95	70	75	96	45

Traits Observed: CE,200WT,400WT,Genomics

Genetic Tests: POLL C-Homozygous Polled (PcPc),IEF,HYF,DLF, Parent Verification: Sire: Verified, Dam: Not Tested

Notes: A younger bull with a good head and eye and is easy fleshing



Simon Koopman

Mitch Reed

Ph: 0267 821029

simon@stockandcrop.com.au

72 Queen St, Barraba NSW 2347

With the competitive advantage of being a member of Australia's largest & fastest growing independent buying group A.I.R.R. (Australian Independent Rural Retailers), your locally owned & run Rural Merchandise Shop offers a diverse range of products for Agricultural & Farming enterprises covering Animal Health, Farm Chemicals, Pasture Seed, Fertilizer, Produce, Fencing, Water Management, Oils, Shearing Supplies, etc ...

Come in and see Simon or Mitch for friendly service & advice.

LAHFORD BULLS



Latitude

Adapted

Why Lahfords

We started our Braford Stud in 2020 with Nungil Chanel, a Carinya blood female & later on that year purchased a line of unjoined heifers from "Little Valley" Braford Stud. We also purchased a cow with bull calf at foot at the Riverton Dispersal and another heifer from Carinya stud. We went for cattle with proven pedigrees.

We are keeping a pure line of Brafords going. We have had tremendous results joining a Hereford bull over these females and our aim is to standardize a distinct type.

The do-ability of these cattle is outstanding. They have good clean skins, are more heat tolerant and yet our cold winters don't seem to worry them. We think they will offer Bos Indicus breeders a bit more fertility and the ability to finish quicker and grade high in MSA.

It is only early days yet, but we are very impressed with this first cross. Our aim is to source the best Braford genetics. I think the Braford Breed offers an untapped potential for whiteface breeders.

Lot 56 TYCOLAH LAHFORD U001 (P) POLLED

A/c: SR & TA Crowley

Calved: 10/04/2023

Tattoo: U001

Polled

BW: 40 KGS

DAYS ELABORATE J59 (AI) P
GRATHLYN HOLLYFIELD N019 (AI) P
GRATHLYN JEWESS L004 (AI) PP

Sire: **SUPPLE RAT A TAT TAT**

TYCOLAH KAPUTAR G27 P
SUPPLE ELMA 45 P
LINDENDALE ELMA 44 P

LITTLE VALLEY ACTON P114609 (C) (P)
LITTLE VALLEY LARRY 2973 P116779 (B) (P)
LITTLE VALLEY SHANI-ANN 2767 P115920 (B) (S)

Dam: **LITTLE VALLEY MISS SHER 3319 P120023 (B) (P) P120023**

LITTLE VALLEY EXPORT P112585 (B) (P)
LITTLE VALLEY MISS SHER 2995 P118006 (B) (P)
LITTLE VALLEY MISS SHER 2605 P112588 (B) (P)



Purchaser:

Price \$:

Genetic Tests: Poll (HPc) Pompes negative Tend 4 BVDV Negative

Notes: A big long strong bull. Great weight per day of age with capacity and good fattening ability. His mother is possibly the best of the Little Valley cows

Lot 57 TYCOLAH LAHFORD U004 (P) POLLED

A/c: SR & TA Crowley Calved: 5/05/2023 Tattoo: U004 Polled BW: 33 KGS

DAYS ELABORATE J59 (AI) P
GRATHLYN HOLLYFIELD N019 (AI) P
GRATHLYN JEWESS L004 (AI) PP

Sire: **SUPPLE RAT A TAT TAT**

TYCOLAH KAPUTAR G27 P
SUPPLE ELMA 45 P
LINDENDALE ELMA 44 P

TAROELA DRASTIC D24 P109001 (B) (S)
ABERNETHY DEE HOFF 1891 P117973 (B) (P)
ABERNETHY 1435 P106326 (B) (H)

Dam: **LITTLE VALLEY EMPRESS 3298 P119862 (B) (P) P119862**

LITTLE VALLEY KENNY P109451 (B) (P)
LITTLE VALLEY EMPRESS 2673 P112614 (B) (P)
LITTLE VALLEY SWEET EMPRESS P108026 (B) (H)

Purchaser:

Price \$:

Vaccination					
LEPTO	3 DAY	5 IN 1	3 GERM	7 IN 1	
OTHER:					

Genetic Tests: Poll (HPc) Pompes negative Tend 3 BVDV Negative

Notes: A well balanced very good skinned bull. Had a light birthweight and would be suitable for heifer joining. His mother is very maternal with a great udder.

Lot 58 TYCOLAH LAHFORD U005 (S)

A/c: SR & TA Crowley Calved: 05/06/2023 Tattoo: U003 BW: 35 KGS

DAYS ELABORATE J59 (AI) P
GRATHLYN HOLLYFIELD N019 (AI) P
GRATHLYN JEWESS L004 (AI) PP

Sire: **SUPPLE RAT A TAT TAT**

TYCOLAH KAPUTAR G27 P
SUPPLE ELMA 45 P
LINDENDALE ELMA 44 P

BURRADOO RINGO P
DOUBLE C M107 MESSENGER P
DOUBLE C J128 ELLE P

Dam: **LITTLE VALLEY REENIE 2657 P**

RARCAMBA FORRESTER 2082 P
LITTLE VALLEY REENIE 2657 P
LITTLE VALLEY MISS REENIE P

Purchaser:

Price \$:

Vaccination					
LEPTO	3 DAY	5 IN 1	3 GERM	7 IN 1	
OTHER:					

Genetic Tests: Poll (Hips) Pompes negative Tend 4 BVDV Negative

Notes: This bull has scurs but I like his conformation, bone and balance. His mother is out of the same cow as Little Valley Jackpot retained as a sire at Little Valley Stud.



Thank you for attending our sale!

Sale Day 2026 at this stage is 17th July 2026

***Save the Date Tycolah Female Production Sale
Thursday 13th November 2025***

**Please let us know if you would like a catalogue
for this sale as catalogues posted on request only.**





TELFER RURAL

- Raised Dog Kennels
- Hen Pen Chicken Enclosure
- Dog Boxes & Hunting Crates
- Livestock Feeding Solutions
- Stock Grids, Gates & End Assembly's
- Mailboxes and much more
- Proudly Australian Made

To see our full range of products visit our website
www.telferrural.com.au



Built Telfer Tough

02 6760 8322 | telferrural.com.au

telfer
RURAL .COM.AU



Who are we and what can we do for you?



At Hancocks Accountants, we make doing business easy.

With over **40 years'** experience serving as accountants and business advisors in Tamworth, we have built up an extensive portfolio of clients working in industries such as hospitality, retail, manufacturing, farming, transport, construction, real estate, medical, finance and insurance.

We help people do business. For new businesses and start-ups, we provide the expertise, advice, and online tools to help bring your business to market.

We help with implementation of business structure, compliance, payroll, superannuation and more.

For existing businesses, we help with transitioning to online accounting, set up rule-based reconciliation to simplify BAS and provide staff training.

Our team is local and has strong agricultural and entrepreneurial connections to the region; we know the issues facing local business first-hand. We take the time to listen to our clients and translate observations into practical, useful business recommendations to help businesses prosper and grow. We explain and minimise the complexity of any situation by using clear and simple terminology.

These are the qualities that make us unique; and qualities our clients have come to expect.

Ph: (02) 6766 4716
www.hancocks.com.au

82-84 Brisbane Street
TAMWORTH NSW 2340



FOR ALL YOUR ARTIFICIAL BREEDING NEEDS

Artificial Insemination

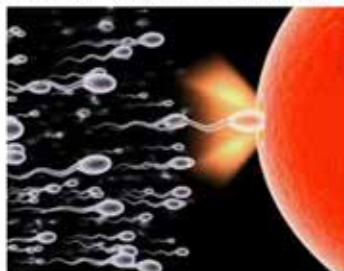
Ultrasound Preg Testing

Semen Collection

Semen & Embryo Storage

Ear Tags

Supplements



www.northernab.com.au

brendan@northernab.com.au

02 6545 2465

0427 417 148

Barraba Rural Traders

HOME Hardware

It all starts at Home

RUMEVITE GROW & SHOW DRYFEED

"PREPARE YOUR STUD CATTLE PROPERLY"



Rumevite Grow & Show Dry Feed is a pelleted grain ration for the preparation of stud cattle for show and sale when fed with mature dry pasture or low protein hay

- Palatable grain ration presented as a pellet
- Customised ingredients suitable for preparing stud cattle
- Appropriate level of bypass protein
- Balanced levels of calcium, phosphorous, trace minerals and vitamins
- Contains added fats & oils to enhance coat shine
- Contains Rumensin® to improve growth rates and feed conversion efficiency
- Contains Acid Buf®, a natural rumen buffer

Available in: 20kg, Bulk Bags and Bulk

For more information please contact your local Ridley Territory Manager:

- **Peter Mooney** on **0428 234 292**
- **Tim Brown** on **0408 667 129**



www.ridleyagriproducts.com.au



SCIENCE. GROWTH. PROFIT.

DELTA



AGRIBUSINESS



David Crowley
Delta Ag Barraba
0428 294 977

We **partner** with farmers
to make the **right** decisions.



**CHAMPION
TYCOLAH WOODBINE SYDNEY
ROYAL 2025**



BUYERS INSTRUCTION SLIP

(No verbal instructions will be accepted)

BUYER REGISTRATION NO.

BUYERS PIC:

Trading Name:

.....

Address: :

.....

Phone:

Email:

Send Account to:

.....

Lots Purchased:

.....

Transfer Required: ☐ YES / ☐ NO

Agree to details released to Herefords Australia: ☐ YES / ☐ NO

Delivery Arrangments:

.....

.....

SIGNATURE OF BUYER:

Date: 18/07/2025



**This form must be completed and lodged
with Nutrien Ag Agents at completion of Sale.**

[illegible]



Lot 38
TYCOLAH WARBLER
U038



Lot 56
TCPU001



Lot 22
TYCOLAH WOODFORD
U134



Lot 23
TYCOLAH WOODBRIDGE
U135



Lot 6
TYCOLAH WALK ON
U004



Lot 11
TYCOLAH WORTHEY
U005

