



# WV SPRING

ONLINE BULL & FEMALE

gate

FRIDAY, 20<sup>th</sup> SEPTEMBER 2024

sale broadcasted online with



[www.auctionsplus.com.au](http://www.auctionsplus.com.au)

## WELCOME TO THE SALE FROM VALLEY CREEK SIMMENTALS

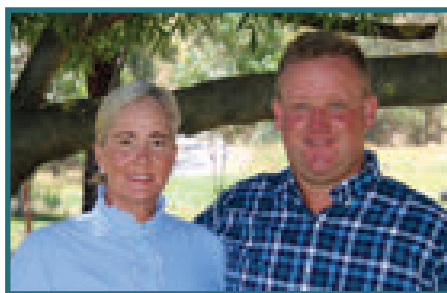
Welcome to the 3rd VC online spring bull sale. We look forward to again presenting these extra soft modern Simmental bulls & heifers to the industry. The progressive programs that do their homework & are prepared for the sale on Friday 20th September 2024 at 6.30pm on Auctions Plus will benefit as there is always excellent value at any price point & will go on & produce for there new owners. We strongly believe in the selling the best & therefor we must buy the best. This philosophy will not change into the future. We also will be selling all the mature cows as a 3 in 1 units the first Friday in December but will continually invest heavily in our ET programs & doubling down on the elite cows we will offer for sale some exciting new Simmental opportunities into the future.

We are super proud of the set of black bulls in the sale we are so excited for what they will do for there new owners. They are led by the first RF Caliber 014G they are sure to turn some heads & followed by the best set of Woonallee Noble Prize Q368 sons to date plus 12 future star black purebred heifers but for us personally the feature is the 6 Australian fullblood heifers, strong data & a look of an interbred champion's this is something we are so proud of #We Are A Full Blood Breeder At Heart

We always say the cattle business in particular seed stock is all about the people, passions, programs & product. Be assured what you are buying has DNA,100k Test, All Parent Verified(PV) all animals are 4 plus generations with all genomically enhanced EPD's. They yearling bulls & females will all have at point of sale a GL, BWT, 200 WT, DOC, 400WT, IMF, EMA, Rib & Rump and scrotal measurement of every animal in the sale plus all pesti tested negative, vaccinated for vibrio, 3 germ blood & semen tested so they are ready to start work. Bulls are on 6kgs per day & heifers 4kgs a day, type of Quayle Milling Pellets plus ad lib rye grass hay with 20% Lucerne.

Rest assured we bleed Simmental whatever colour, type, big, tall, small it's all about showing the industry what Simmental content can do for the industry. Hybrid vigour extra weight gain, extra capacity improved constitution & feet plus without compromising MSA grading & the IMF as well as efficiency (Less Time On Farm) turning off at an earlier age therefore becoming a greener product into the future.

*Stuart & Samantha Moeck, Team VC!*



**VALLEY CREEK SIMMENTALS** *Stuart and Samantha Moeck*  
Binda, New South Wales  
Stuart: 0419465242 Samantha: 0423249746

# THE BEST WAY YOUR FUTURE

# Create



## VC SIMMENTALS

# SPRING BULL SALE

sale broadcasted online with



AY TO PREDICT  
TURE IS TO

*the It*

ITALS ONLINE

**BULL &  
FEMALE**  
*sale*

 [www.auctionsplus.com.au](http://www.auctionsplus.com.au)  
Helmsman Auction from 6:30pm

## SALE DAY INFORMATION

### INSPECTIONS

We welcome inspections of the cattle before the sale to provide you with necessary time to ensure you are selecting the correct female or bull for your program. Please contact Stuart Moeck 0419465242 or Samantha Moeck 0423249746 so that you get that one-on-one service.

### BIDDING

All bidding will take place on Auctions Plus & will commence at 6.30pm Friday 20th September running for 1hr as a timed-out helmsman auction. Time clock will start at 7.30pm. Please contact Tim Woodham 0436 015 115 if you are unsure of this process or wish to phone bid.

### DNA

All heifers & bulls have been parent verified. All heifers & bulls have had genomic samples submitted and reported. Colour tested, polled tested, PI tested. The highest level of catalogue integrity available.

All animals have had a 200-day weight submitted docility, birth weight, gestation length submitted at time of printing EPD's for sale catalogue. In addition to this there will be a 400-day weight scrotal, EMA, Rib & Rump, IMF submitted. IGS have updates every week on the Simmental data base with this additional information as we cannot improve if we do not measure it.

### TRANSPORT/DELIVERY

As a part of our service, we offer FREE CARTAGE  
▪ Australia Wide (Mainland) to all major selling centres.

### REBATE

Selling agents are Nutrien Livestock. Outside agents are entitled to a 2% rebate under the strict following conditions:

- Introducing the buyer in writing to the selling agent at least 24 hours prior to the sale and settling within 7 days

### TRANSFER

All sale cattle are registered with Simmental Australia and are eligible for transfer to your ownership.

### INSURANCE

We recommend insuring your purchases at the fall of the hammer. A Nutrien Insurance representative will be available – Insurance Manager Fiona Petersen 0408 924 508. All cattle are at the purchaser's risk from the fall of the hammer/timer.

### GST

All lots are sold exclusive of GST.

### INDEPENDENT ASSESSMENT

Please feel free to contact any of the Nutrien staff listed to discuss your potential purchase.

Tim Woodham 0436 015 115  
Peter Godbolt 0457 591 929  
John Palmer 0417 653 445  
Mathew Campion 0437 290 435

### STRUCTURAL ASSESSMENT

All sale lots have been inspected and passed an independent accredited structural assessment (feet and legs) VC cattle were inspected by Roger Evans of Bovine Scanning Services (Accreditation No. 1018) on 30th August 2024.

### PHOTOS & VIDEOS OF SALE LOTS

Videos of all lots will be available on Auctions Plus. Photos and videos of sale lots will also be posted on the respective stud Facebook pages & YouTube.

## SALE DAY INFORMATION CONT.

### HEALTH & FERTILITY

VC are Accredited J-BAS Status 7 herd. All cattle have been tested free of Pesti-virus. All bulls and heifers have undergone a full 7 in 1 and Pesti-virus vaccination program with booster vaccinations prior to sale. VC cattle have been drenched with Cydectin Long Acting. All bulls are semen tested & have been blooded for tick fever plus the heifers. Bulls are Vibrio Vaccinated. All VC bulls have been semen tested by Catherine Culley – Culley Veterinary Services.

### GUARANTEE

If there is ever a problem with any of our sale cattle, we would appreciate being the first to know! All our heifers & bulls are fully guaranteed. In the event that a heifer/bull is found to be infertile or incapable of natural service, (which has not occurred due to disease or injury), following the fall of the hammer, we will offer a replacement heifer/bull, or a credit will be given for the following sale, less the salvage value of the animal. This guarantee does not include interest, expenses, costs, or damages. Any claims should be made in writing within 6 months and accompanied by a veterinary certificate.

### LOCATION

Binda is a tiny village located 19km north-west of Crookwell and 259 km south-west of Sydney via the Hume Highway and Goulburn NSW Australia.

### IN HERD SEMEN RIGHTS

VC reserve the right to collect semen from any bull catalogued for sale for respective in-herd use only. If acted upon any collection will be arranged at a time of convenience to the purchaser. All expenses will be met by VC Simmentals

### FEMALE GENETICS

VC retains the rights to flush any VC heifers catalogued. If acted upon any collection will be arranged at a time of convenience to the purchaser. All expenses will be met by VC Simmentals.

### SALE CATALOGUE DISCLAIMER

All reasonable care has been taken by the vendor and designer to ensure that the information provided in this catalogue is correct at the time of publication. However, neither the vendor, selling agents and designer make no other representations about the accuracy, reliability or completeness of any information provided in this catalogue and do not assume any responsibility for the use or interpretation of the information included in the catalogue.

## POLLED AND COAT COLOR INFORMATION

Bull	Cow	Resulting Calves
<b><i>HOMO POLLED - the bull carries two copies of the polled gene</i></b>		
Homo Polled	Homo Polled	100% Polled
	Hetero Polled	100% Polled
	Horned	100% Polled
<b><i>HETERO POLLED - the bull carries one polled gene and one horned gene</i></b>		
Hetero Polled	Homo Polled	100% Polled
	Hetero Polled	75% Polled, 25% Horned
	Horned	50% Polled, 50% Horned
<b><i>HOMO BLACK - the bull carries two copies of the black gene</i></b>		
Homo Black	Homo Black	100% Black
	Hetero Black	100% Black
	Red	100% Black
<b><i>HETERO BLACK - the bull is black in color, but carries one black gene and one red gene. Black is dominant to red, so the red color is not expressed when it is paired with a black gene.</i></b>		
Hetero Black	Homo Black	100% Black
	Hetero Black	75% Black, 25% Red
	Red	50% Black, 50% Red
<b><i>RED - the bull carries two copies of the red gene. This example assumes the bull is diluter free.</i></b>		
Red	Homo Black	100% Black
	Hetero Black	50% Black, 50% Red
	Red	100% Red

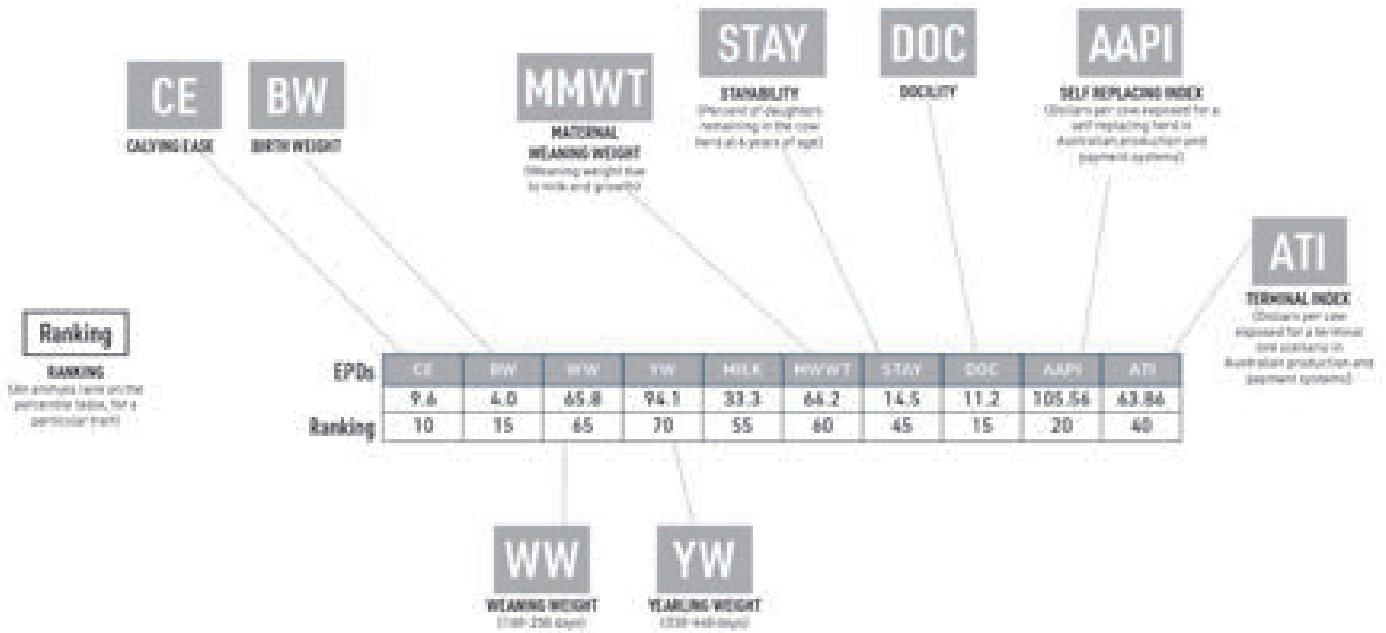
# Interpreting THE FIGURES (EPDS)

With the introduction of the IGS performance recording system for Simmental cattle, IGS is the world's largest animal performance recording system.

One of the major changes is the breeding figures being reported as Estimate Progeny Differences (EPDs), rather than Estimated Breeding Values (EBVs). The difference between the two is simple.

Effectively, an EBV is an animal's own genetic value for a particular trait. However, the animal can only pass half of this onto their progeny. EPDs have the "half" already accounted for. That is, an EPD is the genetic merit of an animal's progeny – what they will pass onto their progeny.

IGS can incorporate an animal's genomics into its performance data. All animals in the Simmental Opportunity sale have been 100K GGP-LD DNA profiled.



## TRADITIONAL, FULLBLOOD REGISTER BREED AVERAGE

CE	BW	WW	YW	MILK	MCE	MWWT	DOC	CW	REA	FAT	MARB	YG	AAPI	ATI	API	TI
5.6	5.5	72.4	102.0	26.3	3.7	62.4	9.6	19.6	0.81	-0.110	-0.08	-0.49	47.20	35.04	97.73	64.78

## BLACK, RED, SIMANGUS AND SPR REGISTER BREED AVERAGE

CE	BW	WW	YW	MILK	MCE	MWWT	DOC	CW	REA	FAT	MARB	YG	AAPI	ATI	API	TI
10.4	2.2	76.8	115.9	21.2	5.7	59.5	12.3	28.7	0.82	-0.077	0.10	-0.37	61.76	55.68	124.84	75.92



# AuctionsPlus

## How to register as an AuctionsPlus user/buyer

1. To sign up to AuctionsPlus, fill in your details and create a security PIN.
2. Verify your email and phone number.
3. Follow the steps to verify your ID.
4. Enter your PIC number, ABN and business details if relevant.
5. Carefully read and accept our user rules and responsibilities.
6. Complete the user quiz.
7. Submit your request to our team.



Scan to sign up now



Scan to see detailed  
step by step instructions







ASR LONGEVITY Y184



WOONALLEE NOBLE PRIZE Q368



RF CALIBER 014G



LUCRANA RADAR

# VALLEY CREEK

*reference sires*

TRADITIONAL & BLACK GENETICS



VC U041

**Homozygous Polled**  
 Another great example of how great RF Caliber is breeding. He is deep sided, heavily built carcass bull with plenty of added length. Super quiet with a balance of traits to match.  
**30th July 2024 WT: 644 kg**

**registration**  
 • ZMJPU041

**birthdate**  
 • 20th July, 2023

Homo Polled - Homo Black

	CE: 9.2	BW: 4.8	WW: 92.7	YW: 135.7	MILK: 27.0	MCE: 6.5	MWWT: 73.4	DOC: 14.9	
	CW: 16.2		REA: 0.76		FAT: -0.077		MARB: -0.20	API: 99.17	TI: 75.26



NGDB STRUCTURE 34D  
**S: RF CALIBER 014G**  
 RF NOT JUST A FLIRT 404B

NCB COBRA 47Y  
 NGDB LOUISE 411 B  
 SVS CAPTAIN MORGAN 11Z  
 RF CERTAINLY FLIRTIN 202Z

WOONALLEE LONDON  
**D: MORGANVALE ERSKIN R98**  
 MORGANVALE ERSKINEVILLE M162

CCR COWBOY CUT 5048Z  
 WEBB CAPTAIN H0922  
 PERT G140  
 BARANA ERSKINEVILLE



VC U036

**Heterozygous Polled**  
 U36 is one of those young sires that is phenotypically so impressive, look at the data, very balanced. A bull that will have a big impact on wherever he goes. This young sire ticks all the boxes & is well worth the trip to come see him!  
**30th July 2024 WT: 689 kg**

**registration**  
 • ZMJPU036

**birthdate**  
 • 16th July, 2023

Hetero Polled - Homo Black

	CE: 7.2	BW: 4.1	WW: 108.8	YW: 170.4	MILK: 23.8	MCE: 6.6	MWWT: 78.2	DOC: 16.2	
	CW: 44.4		REA: 1.32		FAT: -0.113		MARB: -0.17	API: 108.66	TI: 87.61



NGDB STRUCTURE 34D  
**S: RF CALIBER 014G**  
 RF NOT JUST A FLIRT 404B

NCB COBRA 47Y  
 NGDB LOUISE 411 B  
 SVS CAPTAIN MORGAN 11Z  
 RF CERTAINLY FLIRTIN 202Z

LFE THE RIDDLER 323B  
**D: VC STRIKE N051**  
 LANCASTER STRIKE K176

LFE GOTHAM 819Y  
 LFE BS CHARO 23Y  
 TNT TANKER U263  
 LANCASTER E105





**Homozygous Polled**  
 A very thick set commercial bull with ideal frame & a bit more grunt. There is so much substance & softness in the RF Caliber sons.  
**30th July 2024 WT: 672 kg**

**registration**  
 • ZMJPU040

**birthdate**  
 • 19th July, 2023

Homo Polled - Hetero Black

VC U040

	CE: 9.9	BW: 4.1	WW: 101.6	YW: 151.5	MILK: 17.7	MCE: 5.3	MWWT: 68.5	DOC: 13.9
	CW: 28.1		REA: 0.73		FAT: -0.060	MARB: -0.07	API: 113.52	TI: 83.66



NGDB STRUCTURE 34D  
**S: RF CALIBER 014G**  
 RF NOT JUST A FLIRT 404B

NCB COBRA 47Y  
 NGDB LOUISE 411 B  
 SVS CAPTAIN MORGAN 11Z  
 RF CERTAINLY FLIRTIN 202Z

DRAKE POKER FACE 2X  
**D: VC CREAM SODA Q013**  
 HPF CREAM SODA Y010

JS SURE BET 4T  
 DRAKE TULA 1R  
 JF MILESTONE 999W  
 IC CREAM SODA R56



**Homozygous Polled**  
 Heifer Bull SAFE, Another great Woonallee Noble Prize Q368 son with great shape & softness. His dam has bred us some very consistent calves to date. Certainly not one to be overlooked.  
**30th July 2024 WT: 596 kg**

**registration**  
 • ZMJPU044

**birthdate**  
 • 30th July, 2023

Homo Polled - Homo Black

VC U044

	CE: 13.4	BW: 2.1	WW: 74.4	YW: 120.3	MILK: 14.1	MCE: 7.4	MWWT: 51.3	DOC: 13.8
	CW: 17.7		REA: 0.85		FAT: -0.113	MARB: -0.05	API: 132.76	TI: 72.05



WOONALLEE NOBEL PRIZE  
**S: WOONALLEE NOBLE PRIZE Q368**  
 WOONALLEE M44Z

SS/PRS HIGH VOLTAGE 244X  
 WEBB K198  
 MRL DISCOVERY 21A  
 LANCASTER ERICA A330

VALLEY CREEK MARKSMAN  
**D: VC LUCY P006**  
 CIRCLE EIGHT MISS LUCY K299

WOONALLEE JARGON  
 LANCASTER ERICA A330  
 TNT TANKER U26  
 ST PAULS DREAM LUCY E431



VC U049

**Homozygous Polled**  
 This bull goes back to the fabulous cow, Valley Creek Lady Luck. He is very stylish & heavy fleshing bull that's well balanced. Super quiet is a classic example of how dominate the Q368 is on type of cattle he produces.  
**30th July 2024 WT: 582 kg**

**registration**  
 • ZMJPT077

**birthdate**  
 • 1st October, 2022

Homo Polled - Homo Black



CE: 9.3	BW: 4.7	WW: 77.5	YW: 117.8	MILK: 24.7	MCE: 2.8	MWWT: 63.5	DOC: 17.1
CW: 22.9		REA: 1.09		FAT: -0.142		MARB: 0.12	API: 123.93
							TI: 75.84



WOONALLEE NOBEL PRIZE  
**S: WOONALLEE NOBLE PRIZE Q368**  
 WOONALLEE M442

SS/PRS HIGH VOLTAGE 244X  
 WEBB K198  
 MRL DISCOVERY 21A  
 LANCASTER ERICA A330

IPU TIGER 73C  
**D: VC LADY LUCK Q012**  
 VALLEY CREEK LADY LUCK

MRL EL TIGRE 52Z  
 IPU MS RED EFFORT 104S  
 MR NLC UPGRADE U8676  
 LANCASTER POPPY B376



VC U060

**Heterozygous Polled**  
 Heifer safe option, genetics bred to breed true to type & enhance the profitability of your herd. U60 is from a proven cow family another bull worth looking at.  
**30th July 2024 WT: 592 kg**

**registration**  
 • ZMJPU060

**birthdate**  
 • 18th August, 2023

Hetero Polled - Homo Black



CE: 13.0	BW: 2.1	WW: 71.1	YW: 110.9	MILK: 18.5	MCE: 5.8	MWWT: 54.1	DOC: 13.5
CW: 18.9		REA: 0.94		FAT: -0.112		MARB: 0.23	API: 137.70
							TI: 77.30



WOONALLEE NOBEL PRIZE  
**S: WOONALLEE NOBLE PRIZE Q368**  
 WOONALLEE M442

SS/PRS HIGH VOLTAGE 244X  
 WEBB K198  
 MRL DISCOVERY 21A  
 LANCASTER ERICA A330

MR NLC UPGRADE U8676  
**D: VALLEY CREEK LEAH**  
 LANCASTER POPPY B376

ELLINGSON LEGACY M229  
 MS NLC MOJO S6119 B  
 GW LUCKY ONE 686K  
 GW MISS CHOICE 717F



VC U045

**Homozygous Polled**  
 Chasing a very safe calving ease bull which has strong history of longevity that will add growth data & carcass quality. Then U45 is worth a look, his dam R348 is very attractive & has pasted this onto her calves.  
**30th July 2024 WT: 578 kg**

**registration**  
 • ZMJPU045

**birthdate**  
 • 1st August, 2023

Homo Polled - Homo Black

	CE: 11.4	BW: 2.0	WW: 74.7	YW: 115.6	MILK: 24.3	MCE: 5.4	MWWT: 61.7	DOC: 13.2
	CW: 15.8		REA: 0.67		FAT: -0.087		MARB: 0.04	API: 128.50
								TI: 74.47



WOONALLEE NOBEL PRIZE  
**S: WOONALLEE NOBLE PRIZE Q368**  
 WOONALLEE M442

SS/PRS HIGH VOLTAGE 244X  
 WEBB K198  
 MRL DISCOVERY 21A  
 LANCASTER ERICA A330

WOONALLEE LONDON  
**D: MORGANVALE PRINCESS R348**  
 MORGANVALE PRINCESS N201

CCR COWBOY CUT 5048Z  
 WEBB CAPTAIN H0922  
 PERT G140  
 MORGANVALE PRINCESS K309



VC U076

**Homozygous Polled**  
 One very safe calving ease bull with plenty of growth & performance. Smooth shouldered bull that stands proud & very correct with a lovely quiet nature. A strong maternal history will add the profitability to your cattle.  
**30th July 2024 WT: 536 kg**

**registration**  
 • ZMJPU076

**birthdate**  
 • 21st August, 2022

Homo Polled - Homo Black

	CE: 11.6	BW: 2.3	WW: 67.9	YW: 109.4	MILK: 15.9	MCE: 5.2	MWWT: 49.9	DOC: 11.7
	CW: 17.6		REA: 0.99		FAT: -0.110		MARB: 0.11	API: 127.53
								TI: 71.98



WOONALLEE NOBEL PRIZE  
**S: WOONALLEE NOBLE PRIZE Q368**  
 WOONALLEE M442

SS/PRS HIGH VOLTAGE 244X  
 WEBB K198  
 MRL DISCOVERY 21A  
 LANCASTER ERICA A330

ASR AUGUSTUS Z2165  
**D: VC GLENDIVE Q026**  
 VALLEY CREEK GLENDIVE N049

RCR AUGUSTUS R54  
 ASR MS JORDAN W916  
 SVS CAPTAIN MORGAN 11Z  
 BONNYDALE GLENDIVE K199



VC U080

**Homozygous Polled**  
Well hear we go again another Noble Prize Q368 son with extra depth & style. Extremely sound bull with a wonderful set of legs & feet. A great product we are stiving to achieve.  
**30th July 2024 WT: 550 kg**

**registration**  
• ZMJPU080  
**birthdate**  
• 22nd September, 2023  
Homo Polled - Homo Black

	CE: 10.9 CW: 34.5	BW: 3.1	WW: 82.3 REA: 1.06	YW: 123.6	MILK: 19.3 FAT: -0.102	MCE: 5.1	MARB: 0.19	MWWT: 60.5 API: 126.77	DOC: 12.4 TI: 81.08
--	----------------------	---------	-----------------------	-----------	---------------------------	----------	------------	---------------------------	------------------------



WOONALLEE NOBEL PRIZE  
**S: WOONALLEE NOBLE PRIZE Q368**  
WOONALLEE M442

SS/PRS HIGH VOLTAGE 244X  
WEBB K198  
MRL DISCOVERY 21A  
LANCASTER ERICA A330

LFE THE RIDDLER 323B  
**D: VC LADY LUCK R008**  
VALLEY CREEK LADY LUCK

LFE GOTHAM 819Y  
LFE BS CHARO 23Y  
MR NLC UPGRADE U8676  
LANCASTER POPPY B376



VC U048

**Homozygous Polled**  
Looking for that 100% safe calving ease bull, U48 is the bull. Amazing temperament with smooth soft skin. This bull will add frame for the northern clients. A great all-round bull.  
**30th July 2024 WT: 548 kg**

**registration**  
• ZMJPU048  
**birthdate**  
• 5th August, 2023  
Homo Polled - Homo Black

	CE: 15.4 CW: 23.6	BW: -0.1	WW: 63.4 REA: 0.80	YW: 91.0	MILK: 19.1 FAT: -0.092	MCE: 6.5	MARB: 0.13	MWWT: 50.8 API: 124.20	DOC: 11.6 TI: 71.96
--	----------------------	----------	-----------------------	----------	---------------------------	----------	------------	---------------------------	------------------------



WOONALLEE NOBEL PRIZE  
**S: WOONALLEE NOBLE PRIZE Q368**  
WOONALLEE M442

SS/PRS HIGH VOLTAGE 244X  
WEBB K198  
MRL DISCOVERY 21A  
LANCASTER ERICA A330

SVS CAPTAIN MORGAN 11Z  
**D: VC LADY LUCK R007**  
VALLEY CREEK LADY LUCK

HARVIE JDF WALLBANGER111X  
SUNNYVALLEY BLK JENNA 880U  
MR NLC UPGRADE U8676  
LANCASTER POPPY B376





VC U033

**Heterozygous Polled**  
 A lovely grandson of Walk This Way 224B. There like peas in a pod the calves for phenotype. Good strong fleshing bull for all types of cattle & bred to survive & thrive. He's got power & extra frame score that's going to add major kgs to his progeny.  
**30th July 2024 WT: 662 kg**

**registration**  
 • ZMJPU033

**birthdate**  
 • 8th July, 2023

Hetero Polled - Homo Black

ICS	CE: 4.9	BW: 3.9	WW: 85.2	YW: 129.8	MILK: 19.6	MCE: 3.1	MWWT: 62.2	DOC: 13.1
	CW: 32.2		REA: 0.95		FAT: -0.108	MARB: 0.00	API: 107.28	TI: 76.16



**S: VC SUPER SODA**  
 VC CREAM SODA Q010

NCB COBRA 47Y  
 MADER P IRON SUGAR 7X  
 DRAKE POKER FACE 2X  
 HPF CREAM SODA Y010

**D: VC GLENDIVE S054**  
 VC GLENDIVE Q026

VALLEY CREEK NORTH N050  
 VALLEY CREEK LUNA  
 ASR AUGUSTUS Z2165  
 VALLEY CREEK GLENDIVE N049



VC U054

**Heterozygous Polled**  
 A pedigree we highly rate, he's long, soft easy doing on the eye & has a beautiful disposition to match it all. His dam Q030 is just one hell of a productive female which she passed onto U54.  
**30th July 2024 WT: 590 kg**

**registration**  
 • ZMJPU054

**birthdate**  
 • 13th August, 2023

Hetero Polled - Homo Black

ICS	CE: 12.2	BW: 1.1	WW: 66.4	YW: 101.2	MILK: 18.3	MCE: 7.1	MWWT: 51.5	DOC: 13.3
	CW: 23.9		REA: 0.83		FAT: -0.075	MARB: 0.07	API: 134.54	TI: 70.50



**S: WOONALLEE NOBLE PRIZE**  
 WOONALLEE M442

SS/PRS HIGH VOLTAGE 244X  
 WEBB K198  
 MRL DISCOVERY 21A  
 LANCASTER ERICA A330

**D: VC GLENDIVE Q030**  
 BONNYDALE GLENDIVE K199

LFE THE RIDDLER 323B  
 LANCASTER STRIKE K176  
 BONNYDALE BLACK HAWK H274  
 BONNYDALE GLENDIVE E239

# The Females

LOTS 13-29



VC STRIKE U035

**Homozygous Polled**  
 She's a Favorite of Mrs Moeck's, A rare opportunity to purchase a female of this pedigree. There's not much to fault, she always stood out as a heifer calf. Strike U35 has a wonderful length of spine & a big girth shape that is rare to find when she's so soft to look at plus that added bone but she's so feminine. A true show prospect for the elite astute producer wanting a next level female. Halter Broke.

**registration**  
 • ZMJPU035

**birthdate**  
 • 16th July, 2023

Homo Polled - Homo Black

CE: 7.7	BW: 4.5	WW: 106.6	YW: 162.5	MILK: 27.2	MCE: 8.3	MWWT: 80.5	DOC: 14.9
CW: 44.9	REA: 1.20	FAT: -0.113	MARB: -0.17	API: 118.29	TI: 85.61		



NGDB STRUCTURE 34D  
**S: RF CALIBER 014G**  
 RF NOT JUST A FLIRT 404B

NCB COBRA 47Y  
 NGDB LOUISE 411 B  
 SVS CAPTAIN MORGAN 11Z  
 RF CERTAINLY FLIRTIN 202Z

TNT TANKER U263  
**D: LANCASTER STRIKE K176**  
 LANCASTER E105

MR NLC SUPERIOR S6018  
 TNT MISS S17  
 LANCASTER AVIATOR  
 LANCASTER C37





## VC SAGE U043

**Homozygous Polled**  
 U43's dam is a full sister to VC Red Sage Q016 that sold to Mick & Mary Parson for \$15,000. We are so happy with this cross another impressive Noble Prize Q368 daughter & her grand dam WFL Red Sage 506C is out of the most prolific cow in the world genetics not to be missed. Halter Broke.

**registration**  
 • ZMJPU043

**birthdate**  
 • 21st July, 2023

Homo Polled - Hetero Black

ICS	CE: 14.7	BW: 2.3	WW: 71.2	YW: 117.2	MILK: 21.2	MCE: 8.6	MWWT: 56.8	DOC: 11.1
	CW: 24.0		REA: 0.88		FAT: -0.080	MARB: 0.21	API: 136.56	TI: 76.99



WOONALLEE NOBEL PRIZE  
**S: WOONALLEE NOBEL PRIZE Q368**  
 WOONALLEE M442

SS/PRS HIGH VOLTAGE 244X  
 WEBB K198  
 MRL DISCOVERY 21A  
 LANCASTER ERICA A330

SPRINGCREEK LINER 56U  
**D: VC RED SAGE Q015**  
 WFL RED SAGE 506C

RCC/TCF LINE DRIVE M181  
 NEVAS L93  
 R PLUS RELOAD 2006Z  
 WFL RED SAGE 1003Y



## VC LUCY U078

**Homozygous Polled**  
 This babe has the most amazing attitude in life. She soft, long bodied, powerful female with a huge brood cow promise & style to love! U78 is the last direct daughter of circle Eight Miss Lucy K299 that is now deceased. One not to be overlooked. Halter Broke.

**registration**  
 • ZMJPU078

**birthdate**  
 • 19th September, 2023

Homo Polled - Hetero Black

ICS	CE: 9.9	BW: 3.6	WW: 77.2	YW: 119.7	MILK: 18.2	MCE: 4.9	MWWT: 56.8	DOC: 16.1
	CW: 27.6		REA: 1.05		FAT: -0.083	MARB: -0.17	API: 105.20	TI: 68.35



WOONALLEE NOBEL PRIZE  
**S: WOONALLEE NOBEL PRIZE Q368**  
 WOONALLEE M442

SS/PRS HIGH VOLTAGE 244X  
 WEBB K198  
 MRL DISCOVERY 21A  
 LANCASTER ERICA A330

TNT TANKER U263  
**D: CIRCLE EIGHT MISS LUCY K299**  
 ST PAULS DREAM LUCY E431

MR NLC SUPERIOR S6018  
 TNT MISS S17  
 CNS DREAM ON L186  
 LUCAS MS 129L 594R



VC LINETTE U069

**Heterozygous Polled**  
 Another impressive Noble Prize Q368 daughter that is combined with so much depth with a clean stunning front. Bred in the purple with Canadian & Australian genetics combined. If you're looking for overall capacity then U069 is your female.

**registration**  
 • ZMJPU069

**birthdate**  
 • 2nd September, 2023

Hetero Polled - Homo Black

	CE: 15.3	BW: 0.3	WW: 74.8	YW: 113.2	MILK: 21.3	MCE: 8.8	MWWT: 58.7	DOC: 10.7
	CW: 19.9		REA: 0.89		FAT: -0.073		MARB: 0.06	API: 131.83
								TI: 77.32



WOONALLEE NOBEL PRIZE  
**S: WOONALLEE NOBEL PRIZE Q368**  
 WOONALLEE M442

SS/PRS HIGH VOLTAGE 244X  
 WEBB K198  
 MRL DISCOVERY 21A  
 LANCASTER ERICA A330

LFE THE RIDDLER 323B  
**D: VALLEY CREEK LINETTE N003**  
 BLACKSAND LINETTE 823U

LFE GOTHAM 819Y  
 LFE BS CHARO 23Y  
 SPRINGCREEK LINER 104S  
 SPRINGCREEK DAWN 131P



VC PRINCESS U056

**Homozygous Polled**  
 U56 has that real sweet front & extremely stout through her rib & hip shape. A very attractive female for any breeding program. A prime example of what VC are striving to breed, great phenotype with calving ease to burn.

**registration**  
 • ZMJPU056

**birthdate**  
 • 16th August, 2023

Homo Polled - Homo Black

	CE: 10.9	BW: 1.5	WW: 72.4	YW: 117.8	MILK: 20.9	MCE: 4.9	MWWT: 57.1	DOC: 13.0
	CW: 23.6		REA: 0.89		FAT: -0.117		MARB: 0.28	API: 130.83
								TI: 80.27



WOONALLEE NOBEL PRIZE  
**S: WOONALLEE NOBEL PRIZE Q368**  
 WOONALLEE M442

SS/PRS HIGH VOLTAGE 244X  
 WEBB K198  
 MRL DISCOVERY 21A  
 LANCASTER ERICA A330

WOONALLEE MCGRAW  
**D: MORGANVALE PRINCESSQ134**  
 MORGANVALE PRINCESS L267

ERIXON PIT BOSS 21Z  
 WOONALLEE CHARO H253  
 PERT G140  
 LANCASTER PRINCESS B396



**Heterozygous Polled**  
 The only Longevity female in the sale a half sister to the joint top price female from last years sale VC Strike T050 bought by Blue Gene Cattle Co. Beautiful fronted female with a tidy udder we look forward to seeing more of this girl in the future.

**registration**  
 • ZMJPU038

**birthdate**  
 • 18th July, 2023

Hetero Polled - Homo Black

VC **SHE'S MORGAN U038**

ICS	CE: 7.7	BW: 5.9	WW: 84.6	YW: 112.1	MILK: 21.3	MCE: 5.1	MWWT: 63.6	DOC: 9.1
	CW: 29.9		REA: 0.68		FAT: -0.066	MARB: 0.07	API: 113.30	TI: 74.54



ASR/GLS PACESETTER U862  
**S: ASR LONGEVITY Y184**  
 ASR MISS PRIMROSE M231

HOOKS PACESETTER 8P  
 GLS S82

SVS CAPTAIN MORGAN 11Z  
**D: VALLEY CREEK SHES MORGAN**  
 LANCASTER POPPY B376

HARVIE JDF WALLBANGER111X  
 SUNNYVALLEY BLK JENNA 880U  
 GW LUCKY ONE 686K  
 GW MISS CHOICE 717F



**Homozygous Polled**  
 This stylish classy heifer has softness, length that sets the standard high from well-established material lines whose females show fertility & milking ability. U39 will add size into her progeny & make a lovely cow for years to come.

**registration**  
 • ZMJPU039

**birthdate**  
 • 19th July, 2023

Homo Polled - Hetero Black

VC **STRIKE U039**

ICS	CE: 10.8	BW: 1.4	WW: 89.3	YW: 138.5	MILK: 26.8	MCE: 10.0	MWWT: 71.5	DOC: 14.1
	CW: 29.2		REA: 0.86		FAT: -0.085	MARB: 0.08	API: 131.74	TI: 85.12



NCB COBRA 47Y  
**S: MADER WALK THIS WAY 224B**  
 MADER P IRON SUGAR 7X

LFE VIPER 455U  
 NCB MISS DREAM 22T  
 MADER P BLACK IRONMAN 22U  
 LFE FAMOUS 632T

NICHOLS MANIFEST T79  
**D: LANCASTER STRIKE J141**  
 LANCASTER C370

NICHOLS LEGACY M72  
 NICHOLS MCM N13  
 LANCASTER ACE  
 LANCASTER MISS STRIKE Z015



**Homozygous Polled**  
 The only female produced by N048 as she is now deceased. Incredible rip shape with extra softness. This gem has a big future & flawless structure. A great example of a pedigree we would love to make again, again & again.

**registration**  
 • ZMJPU062

**birthdate**  
 • 22nd August, 2023

Homo Polled - Homo Black

## VC LUCY U062

<b>CE:</b> 10.9	<b>BW:</b> 4.8	<b>WW:</b> 84.3	<b>YW:</b> 139.2	<b>MILK:</b> 14.6	<b>MCE:</b> 5.2	<b>MWWT:</b> 56.8	<b>DOC:</b> 11.1
<b>CW:</b> 31.9		<b>REA:</b> 0.95		<b>FAT:</b> -0.109	<b>MARB:</b> 0.06	<b>API:</b> 131.03	<b>TI:</b> 77.48



WOONALLEE NOBEL PRIZE  
**S: WOONALLEE NOBLE PRIZE Q368**  
 WOONALLEE M442

SS/PRS HIGH VOLTAGE 244X  
 WEBB K198  
 MRL DISCOVERY 21A  
 LANCASTER ERICA A330

LFE THE RIDDLER 323B  
**D: VALLEY CREEK LUCY N048**  
 CIRCLE EIGHT MISS LUCY K299

LFE GOTHAM 819Y  
 LFE BS CHARO 23Y  
 TNT TANKER U263  
 ST PAULS DREAM LUCY E431



**Homozygous Polled**  
 Long free moving Q368 daughter that displays all the attributes of a black Simmental we admire. A bigger framed heifer one we have a lot of time for.

**registration**  
 • ZMJPU058

**birthdate**  
 • 17th August, 2023

Homo Polled - Homo Black

## VC MISS SCREAM U058

<b>CE:</b> 9.9	<b>BW:</b> 2.6	<b>WW:</b> 74.3	<b>YW:</b> 115.2	<b>MILK:</b> 21.5	<b>MCE:</b> 6.1	<b>MWWT:</b> 58.7	<b>DOC:</b> 15.2
<b>CW:</b> 21.0		<b>REA:</b> 0.76		<b>FAT:</b> -0.094	<b>MARB:</b> 0.10	<b>API:</b> 127.04	<b>TI:</b> 74.52



WOONALLEE NOBEL PRIZE  
**S: WOONALLEE NOBLE PRIZE Q368**  
 WOONALLEE M442

SS/PRS HIGH VOLTAGE 244X  
 WEBB K198  
 MRL DISCOVERY 21A  
 LANCASTER ERICA A330

BGS/BM CAPTAIN SCREAM 63D  
**D: VC MISS SCREAM R012**  
 LANCASTER STRIKE K176

SVS CAPTAIN MORGAN 11Z  
 RF SCREAM 215Z  
 TNT TANKER U263  
 LANCASTER E105





## VC LINETTE U070

**Homozygous Polled**  
A twin sister to lot 16, Peas in a pod really. Deep sided with a front end. Bred in the purple with Canadian & Australian genetics combined. If you're looking for overall capacity U070 is your female.

**registration**  
• ZMJPU070

**birthdate**  
• 2nd September, 2023

Homo Polled - Homo Black

ICS	CE: 13.9	BW: 1.3	WW: 74.2	YW: 109.9	MILK: 21.3	MCE: 8.0	MWWT: 58.4	DOC: 10.5
	CW: 21.7		REA: 0.67		FAT: -0.079	MARB: 0.13	API: 131.21	TI: 76.67



WOONALLEE NOBEL PRIZE  
**S: WOONALLEE NOBLE PRIZE Q368**  
WOONALLEE M442

SS/PRS HIGH VOLTAGE 244X  
WEBB K198  
MRL DISCOVERY 21A  
LANCASTER ERICA A330

LFE THE RIDDLER 323B  
**D: VALLEY CREEK LINETTE N003**  
BLACKSAND LINETTE 823U

LFE GOTHAM 819Y  
LFE BS CHARO 23Y  
SPRINGCREEK LINER 104S  
SPRINGCREEK DAWN 131P



## VC GLENDIVE U047

**Homozygous Polled**  
Style, performance, frame, phenotype just to name a few things we think of U074. A lovely Super Soda heifer that's sure going to be productive like her grand dam Bonnydale Glendive K199 we paid \$22,000

**registration**  
• ZMJPU047

**birthdate**  
• 5th August, 2023

Homo Polled - Hetero Black

ICS	CE: -0.4	BW: 8.3	WW: 93.4	YW: 146.0	MILK: 21.7	MCE: -1.1	MWWT: 68.4	DOC: 14.5
	CW: 39.7		REA: 1.01		FAT: -0.113	MARB: 0.03	API: 99.72	TI: 75.71



MADER WALK THIS WAY 224B  
**S: VC SUPER SODA**  
VC CREAM SODA Q010

NCB COBRA 47Y  
MADER P IRON SUGAR 7X  
DRAKE POKER FACE 2X  
HPF CREAM SODA Y010

VC PAYTON  
**D: VC GLENDIVE R046**  
VC GLENDIVE Q030

IPU TIGER 73C  
CIRCLE EIGHT MISS LUCY K299  
VALLEY CREEK NORTH N050  
BONNYDALE GLENDIVE K199



**Homozygous Polled**  
With data like U073 in a traditional package makes us so happy to present this stunning female. High maternal calving ease that's dark red colour patten that's homozygous polled.

**registration**  
• ZMJPU073

**birthdate**  
• 5th September, 2023

Homo Polled

## VC COVERGIRL U073



CE: 8.5	BW: 4.3	WW: 74.5	YW: 101.3	MILK: 35.4	MCE: 7.7	MWWT: 72.7	DOC: 14.1
CW: 21.6		REA: 0.40		FAT: -0.104	MARB: -0.08	API: 104.40	TI: 67.95



GLEN ANTHONY Y-ARTA AY02  
**S: LUCRANA RADAR**  
LUCRANA N020

WAI-ITI HIGH RISER  
WILLOWBROOK URSULINA AU18  
WOONALLEE DIMENSION  
LUCRANA K120

VALLEY CREEK JOKER  
**D: VALLEY CREEK COVERGIRL**  
VALLEY CREEK HEDWIG 026

VALLEY CREEK HARRACH  
BARANA FELTON  
PROSTOCK HUGO 7052T  
WOONALLEE HEDWIG C130



**Heterozygous Polled**  
A unique female that's well balanced. A great set of EPD's with length & functionality with an outlook that females of her pedigree should feature. U66 pedigree is a must we believe for the astute traditional breeder.

**registration**  
• ZMJPU066

**birthdate**  
• 27th August, 2023

Hetero Polled

## VC POLLY U066



CE: 6.2	BW: 5.7	WW: 78.5	YW: 114.1	MILK: 31.7	MCE: 5.2	MWWT: 71.0	DOC: 11.0
CW: 37.6		REA: 0.86		FAT: -0.120	MARB: 0.05	API: 116.08	TI: 72.11



GLEN ANTHONY Y-ARTA AY02  
**S: LUCRANA RADAR**  
LUCRANA N020

WAI-ITI HIGH RISER  
WILLOWBROOK URSULINA AU18  
WOONALLEE DIMENSION  
LUCRANA K120

WOONALLEE LANDLORD  
**D: VC POLLY Q018**  
VALLEY CREEK POLLY

STARWEST TOTAL VALUE  
WOONALLEE VASTI B117  
SCOTTISH HEROD 5051 372  
WOONALLEE POLLY A1





**Homozygous Polled**  
 A real crowd Favorite! Everyone who tours the VC females just adores this pretty female. She's so soft, big topped, big hipped with a long neck that makes her so attractive. A homo polled female that would make an exceptional show prospect. Her dam Tennysonvale Reggie R024 stood Top 5 Interbred Female at the Sydney Royal Easter Show. Can U064 go one better?

**registration**  
 • ZMJPU064

**birthdate**  
 • 25th August, 2023

Homo Polled

VC REGGIE U064

ICS	CE: 10.1	BW: 6.3	WW: 84.3	YW: 123.1	MILK: 26.9	MCE: 7.2	MWWT: 69.1	DOC: 10.3
	CW: 24.5	REA: 0.74	FAT: -0.130	MARB: -0.18	API: 94.37	TI: 69.66		



GLEN ANTHONY Y-ARTA AY02  
**S: LUCRANA RADAR**  
 LUCRANA N020

WAI-ITI HIGH RISER  
 WILLOWBROOK URSULINA AU18  
 WOONALLEE DIMENSION  
 LUCRANA K120

TENNYSONVALE KIP  
**D: TENNYSONVALE REGGIE**  
 TENNYSONVALE HAZELOCH MAGICA M

TENNYSONVALE WILLIAM 2  
 TENNYSONVALE CAITLIN  
 TENNYSONVALE FLOYD  
 HAZELOCH BEAUTY AU1070



**Homozygous Polled**  
 A great EPD profile with amazing skin like butter plus super soft. U57 comes from a very sweet female line with that added bonus from Radar. Magnificent growth & performance that will not disappoint.

**registration**  
 • ZMJPU057

**birthdate**  
 • 16th August, 2023

Homo Polled

VC HEDWIG U057

ICS	CE: 9.9	BW: 5.5	WW: 84.2	YW: 122.7	MILK: 34.5	MCE: 9.6	MWWT: 76.6	DOC: 13.9
	CW: 24.4	REA: 0.58	FAT: -0.114	MARB: -0.13	API: 109.68	TI: 72.03		



GLEN ANTHONY Y-ARTA AY02  
**S: LUCRANA RADAR**  
 LUCRANA N020

WAI-ITI HIGH RISER  
 WILLOWBROOK URSULINA AU18  
 WOONALLEE DIMENSION  
 LUCRANA K120

BAR 5 SA HARRACH 801P  
**D: VC HEDWIG S026**  
 WOONALLEE HEDWIG C130

BAR 5 SA OPTIMAL 447L  
 BAR 5 SA LADY SISKA 409M  
 BLINKBOU MODIST  
 WISP-WILL HEDWIG 9



**Heterozygous Polled**  
 A heifer worth looking at twice at, the BEST indexing animal in our sale. Neat tidy heifer with perfect phenotype & data to use. Heidi U84 has plenty to offer.

**registration**  
 • ZMJPU084

**birthdate**  
 • 22nd October, 2023

Hetero Polled

## VC HEIDI U084



CE: 6.7	BW: 6.6	WW: 88.2	YW: 125.9	MILK: 35.6	MCE: 4.1	MWWT: 79.7	DOC: 14.0
CW: 45.8	REA: 0.89	FAT: -0.112	MARB: 0.04	API: 111.46	TI: 76.68		



GLEN ANTHONY Y-ARTA AY02  
**S: LUCRANA RADAR**  
 LUCRANA N020

WAI-ITI HIGH RISER  
 WILLOWBROOK URSULINA AU18  
 WOONALLEE DIMENSION  
 LUCRANA K120

VC PAY DAY  
**D: VC HEIDI S057**  
 VC HEIDI P013

STARWEST POL BLUEPRINT  
 WOONALLEE KATHIE B111  
 WOONALLEE LANDLORD  
 VALLEY CREEK HEIDI



**Heterozygous Polled**  
 A medium red female that is structurally sound & offers a good outlook for breeding. Super docile with plenty of front end to desire. U85 comes from a very productive cow female line that we would love to make again!

**registration**  
 • ZMJPU085

**birthdate**  
 • 26th October, 2023

Hetero Polled

## VC ELLIE U085



CE: 6.3	BW: 6.9	WW: 83.5	YW: 125.0	MILK: 38.9	MCE: 4.2	MWWT: 80.7	DOC: 14.3
CW: 21.6	REA: 0.87	FAT: -0.108	MARB: 0.07	API: 114.40	TI: 75.47		



GLEN ANTHONY Y-ARTA AY02  
**S: LUCRANA RADAR**  
 LUCRANA N020

WAI-ITI HIGH RISER  
 WILLOWBROOK URSULINA AU18  
 WOONALLEE DIMENSION  
 LUCRANA K120

WOONALLEE LANDLORD  
**D: VC ELLIE P004**  
 MILTON VIEW ARLIE

STARWEST TOTAL VALUE  
 WOONALLEE VASTI B117  
 GREAT GUNS FERDINAND 13Z  
 MILTON VIEW HORTENNES

**BLL**

# RUMBLE 62H

IMUPR9017 FULLBLOOD MALE NOVEMBER 6, 2020 POLLED



*semen opportunity* **10 units**  
BLL RUMBLE 62H



SIBELLE SPARTACUS 8A  
SIBELLE SUGAR RAY 25F  
SIBELLE POL CROCUS 20D

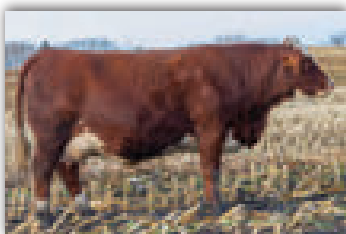
VIRGINIA WALKER 97W  
BBBG FRANCESCA 2S  
ANCHOR D IMAX 250Y  
SIBELLE POL MOLLY 7B

FGAF MAGNUM 901Z  
BEE COUTURE 663D  
EAGLE-RIDGE ULTRA 26U

ALLM COLOSSAL 25U  
VIRGINIAS UPTOWNGAL  
VIRGINIAS RED MARCIANO FF  
EAGLE-RIDGE RUBY 41R

On inspection there are several milestones that come along which fuels the excitement for us the big milestone is calving, weaning & of course the bull sale. By all accounts calving went extremely well he darken colour, added depth on nearly every calf. It was hard to find a horned one, you could walk around a sale pen & basically eye sort his calves. Not only did he stamp them type wise but there where all the big ones averaging 50kgs heavier than his contemporary group. The excitement just continues to grow the bulls are developing & are extremely impressive. To sum him up – Dark Red, Soggy Made, Soft, Heavy Muscled, Long Spined, Easy Fleshing, Big Footed with a big jaw that we are impressed with. The maternal greatness is stacked on both sides of his pedigree. Rumbles dam BEE Couture 663D was in the top 2 of her respective female group & her dam Rumbles grand dam, Egale-Ridge Ultra 26U was a cow that never missed. Here is your chance to join the excitement & acquire semen on the \$355,000 Rumble for the upcoming 2024 breeding season.

**Semen Stored at Holbrook Vets NSW & Buyer to pay all shipping/handling cost.**



DAM BEE COUTURE 663D



SIRE SIBELLE SUGAR RAY 25F



VC SIMMENTALS ONLINE

**SPRING BULL  
& FEMALE**  
*sale*