

Glatz Black Angus



Spring Cattleman's Bull Sale

- Monday 9th September 2024 at 11am •
"Coroona" Branxholme, Vic



Lot 6. Black Angus Blockbuster U5
(Sire- Karoo Main Event)



Alpine Rip Wheeler
(Sire – Karoo Main Event)
Sold for \$75,000 in 2021



KAROO Main Event

“Main Event is a proven sire who is breed elite for Foot Structure, Positive Fat and Calving Ease. Main Event sons have sold to \$75,000. Glatz Black Angus have used Main Event for 3 x consecutive years and expect his daughters to perform particularly well when in production”



Like us on Facebook
Glatz Black Angus



Glatz Black Angus

Spring Cattleman's Bull Sale

- Monday 9th September 2024 at 11am •
On Property, "Coroona"
299 Caroona Lane, Branxholme, Vic

CONTACTS

Ben and Samantha Glatz Mobile 0407 712 455
Email glatzblackangus@gmail.com
Website www.glatzsblackangus.com



Sam Savin	0407 939 910
Rob Aldridge	0438 656 528
Peter Godbolt	0457 591 929
Nick Farley	0427 529 335
Trevor Wiseman	0427 237 369
Gordon Wood	0408 813 215
Richard Miller	0428 849 327



AuctionsPlus

Bull Videos Available

DISCLAIMER

Whilst all due care and attention has been paid to accuracy in the compilation of this catalogue, neither the vendors nor the selling agents or the representative(s) thereof assume any responsibility whatsoever for the correctness, use or interpretation of the information in this sale catalogue.



Welcome

We invite you to attend our annual Spring Cattleman's Bull Sale for 2024.

Our family graciously acknowledge the support and success of our 2023 Spring Victorian Sale and recent South Australian Sale.

Here at Glatz Black Angus, we offer problem-free bulls, brand marketability, consistency, post-sale service and industry-grade acclaim. These are the sound reasons why cattle breeders look to Glatz Black Angus as their preferred genetic partner.

Glatz bulls are generationally bred to be more robust, muscular and profit driven in comparison to some Angus cattle of today. Ideal for self-replacing weaner producers whose calves are finished on grass or short-term grain.

Progeny from Glatz Black Angus bulls reach premium finished carcass weights of 300-350kg in rapid time whether on grass or in a feedlot. This is what sets Glatz Black Angus bulls apart.

Glatz's genetics can advance your self-replacing female herd. Replacement females that perform and go the distance under heavy stocking rates. Medium framed, easy-keeping and productive. For generations, there's been no compromise made on fertility and production traits, such as scrotal size, milk, and docility. Strict selection for type and structural conformation are non-negotiable.

Our cattle are endorsed by generations of deliberate breeding objectives, driven by Profitability, Predictability and Purpose, resulting in Problem Free Angus bulls.

All Glatz bulls are backed by our own industry leading 3 YEAR Guarantee.

In the instance of bull breakdown or misadventure, we provide immediate service and backup.

The bulls catalogued for this 2024 Spring Cattleman's Bull Sale represent all that we stand for in breeding profitable Angus cattle. The majority of bulls are from first calf heifers and are suitable for heifer joining.

We invite your inspection at our Bull Inspection Afternoon from 1-4pm on Monday September 2nd, or from 9am on Sale Day or at any other time that's convenient.

This sale will be interfaced with AuctionsPlus. Video footage will be available for all lots along with live online bidding.

We look forward to seeing you at our sale,
Ben and Samantha Glatz.





Sale Information

SALE TIME

The sale is scheduled to commence at 11am AEST on Monday 9th September, 2024. Inspections are welcome from 9am on Sale Day or at any other time that's convenient.

ONLINE BIDDING

The sale will be interfaced with AuctionsPlus. Videos will be available along with live online bidding.

BULL INSPECTION AFTERNOON

All bulls catalogued for this sale will be available for inspection at our on-property Bull Inspection Afternoon. Monday 2nd September, 1-4pm. On property, "Coroona" 299 Caroon Lane, Branhholme, Vic.

SEMEN TESTING

All bulls catalogued for this sale have passed semen testing and morphology criteria, conducted by Nationwide Artificial Breeders. Contact Drew for further information – 0428 925 255.

BULL INSURANCE

Buyers are reminded that any purchases become their responsibility from the fall of the hammer. We strongly recommend that all bulls are comprehensively insured until conclusion of their first mating season.

GENETIC TESTING

All animals catalogued for sale with reasonable likelihood of possessing a copy of the recessive gene for Arthrogryposis Multiplex (AM), Neuropathic Hydrocephalus (NH), Contractural Arachnodactyly (CA) or Developmental Duplication (DD) have been DNA tested to determine their genetic status. The genetic status of every animal is clearly marked in this catalogue.

AMF, NHF, CAF, DDF = Tested Free.
AMFU, NHFU, CAFU, DDFU = Free based on pedigree, but untested.

AMC, NHC, CAC, DDC = Tested Carrier

If you have any questions in relation to genetic testing, please feel free to discuss them with us.

HERD HEALTH

All bulls have been vaccinated and boosted with 7in1 and Pestigard. Furthermore all sale bulls have been treated with Mineral Solutions and will be drenched prior to sale. All breeding age females are vaccinated with Pestigard and 7 in 1 annually.

BIOSECURITY

Glatz Black Angus hold current status of J-BAS 6.

THE GLATZ BLACK ANGUS GUARANTEE

All Glatz Black Angus bulls are backed by our own industry leading 3 YEAR GUARANTEE. In the event of a bull proven to be infertile or incapable of natural service the vendor can either offer a suitable replacement if available or issue a credit for future sales. The credit is a pro-rata value of the bull minus the salvage value. The guarantee can only apply if the bulls incapacity is not caused by injury or disease since taking delivery. Any claim must be accompanied by a relevant veterinary certificate. The vendor retains the right to obtain independent veterinary confirmation of any claim. GBA guarantee immediate service and back up if required.

STOCK HANDLING

Glatz Black Angus cattle are always handled with utmost patience and due care. Mustering is generally undertaken with 4 wheel motorbikes. The bulls have been exposed to working dogs.

SEMEN MARKETING RIGHTS

The semen marketing rights for specific lots in this catalogue are to be retained by the vendor. Alterations to these conditions can be negotiated with the vendor prior to the sale.

DELIVERY

The vendor will personally deliver as many of the sale lots as possible, free of charge, to your property. These arrangements can be made after the sale.

REBATE

A 3% rebate is offered to outside agents introducing buyers to the selling agent prior to the sale and settling within 7 days. Outside agents must attend the sale to be eligible.

PHONE BIDDING

Phone bidding will be available for the sale. For further information contact Sam Savin 0407 939 910.

CATERING

Catering and refreshments will be available before and after the sale. Kindly supported by the Branhholme Wallacedale Football/Netball Club and Glatz Black Angus.

QR CODES

The QR codes in this catalogue can be scanned with your mobile device to play video material of the animal.

History of Glatz Black Angus

Our History: After marrying in early 1999, Ben and Samantha embarked on their agricultural journey by purchasing their first home: a cozy one-bedroom cottage in the Adelaide Hills. Ben managed a nearby Angus stud herd, while Samantha competed nationwide in various equestrian events, winning both state and national hack and rider class titles. When that stud dispersed, Ben leveraged his expertise to purchase the most elite females as a foundation for his own herd, establishing Glatz's Black Angus (GBA), to be run on leased land. Additional cow families were selected from top dispersals like Mel Gibson's NSW Beartooth Angus and the Edwards family's Black stud in Victoria. The cow families acquired from these herds run deep in the make-up and function of the GBA herd today.

As the Glatz family grew with the birth of their sons, Dylan in 2001 and Jack in 2003, so did their vision for the GBA herd. In 2005, they purchased their first farming property, Avenue, in South East SA. Ben's extensive experience as an accredited ultrasound technician and Beefclass Structural Assessor provided invaluable insights and pivotal cash flow, enabling the expansion of the GBA herd. Ben continues to scan approximately 10,000 stud cattle of all breeds annually throughout SA, Vic, and WA, generating knowledge that has been crucial for genetics, management, and networking.



2008 – The year of Glatz Black Angus Inagural Bull Sale.

Being first-generation purchaser-farmers is a source of immense pride for us. We have continued to grow our business organically, driven by Ben's passion for cattle, work ethic and a focused breeding approach. Initially selling bulls privately, GBA held its first on-property bull sale in 2008 to meet growing demand, coinciding with the rising prominence of Angus cattle in the Australian beef industry. These successful sales have gone from strength



to strength, with around 100 bulls being sold from Avenue annually.

Our Beliefs: Our loyal clients, from large-scale producers and fellow stud-breeders to young breeders just starting their agricultural journey, are our greatest assets. Many have attended and purchased bulls from every one of our 17 on-property bull sales in SA. Frequent inquiries from other stud breeders and subsequent sales are a valuable metric for assessing the GBA program's nationwide recognition and performance.

Unfortunately, 2021 began with the devastating Blackford Avenue Range bushfire, leveling our entire Avenue Range property and resulting in the loss of all fencing, sheds, fodder, water infrastructure and (saddest of all) 249 GBA stud cattle perished. With volunteer assistance, we rebuilt the farm, and stock numbers were slowly restored; staying true to the non-negotiable objectives that have built the GBA brand. Our cows are robust, fertile, structurally sound, docile, and thrive under high stocking rates. GBA bulls are also robust, structurally sound and docile whilst breeding progeny for our clients perform well under high stocking rates.

Our Future: Amidst the bushfire devastation we remain positive, resilient, optimistic, and prioritise family. Always approaching GBA operations with focus, enthusiasm and professionalism. Although Dylan and Jack enjoyed the benefits of growing up in country SA, they both attended boarding

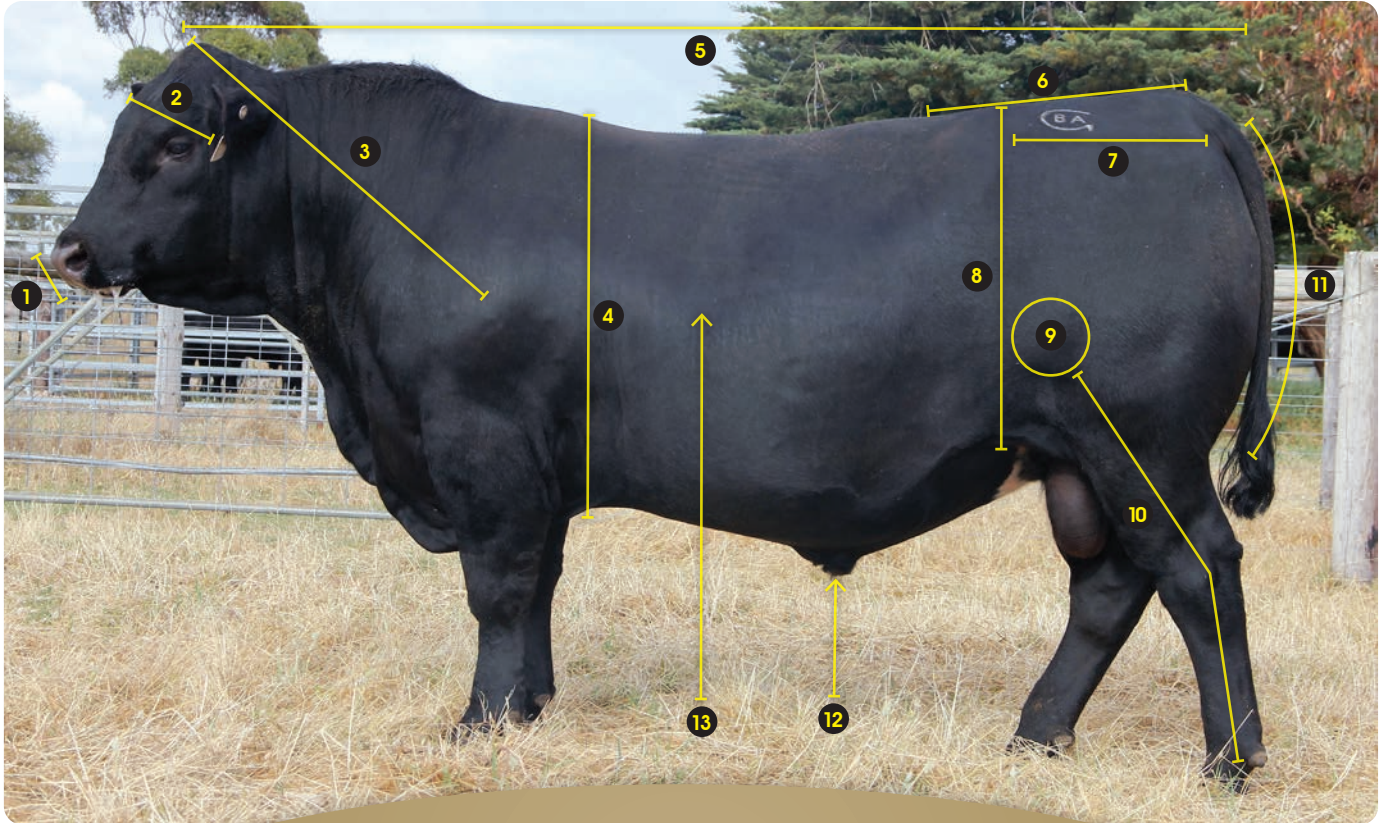
school in Melbourne throughout the 2010s, perhaps initiating a gradual spread into Victoria. In 2022, we expanded with the purchase of Coroona in Victoria's Western Districts, bringing us closer to our Victorian client base and conducting our inaugural on-property Spring Bull sale in September 2023. Also bringing Dylan and Jack (who are both attending university in Melbourne) geographically closer for greater family involvement with the farm.

Today, both Avenue and Coroona run a mix of breeding females, replacement females, and sale bulls, with a current herd of 400 stud breeding females. We market approximately 150 bulls annually in February and September auctions, with private sales year-round. We are thoroughly enjoying our new family home at Coroona, appreciated for its picturesque landscape, shelter belts, nature corridors, and beautiful historic bluestone home.

Our journey has been one of growth, resilience, and commitment to excellence. We continue to uphold our dedication to breeding exceptional Angus cattle and supporting our valued clients across Australia. With focus and enthusiasm, we look forward to the future, confident in the strength of our cows, the richness of our history, and the unwavering character of our family and community.

We are truly grateful for the warm welcome we have received in the community, thank you.

“The Ideal Beef Bull”



“A beef animal needs to be sound structured and free in locomotion whilst displaying quality of type. Adhering to these criteria, with some support of performance data (EBV’s) when selecting bulls is best practice. Such practice will reward the profitability and sustainability of your beef breeding business.”

1. Muzzle/Jaw

A wide muzzle and prominent bottom jaw are desirable. These are essential for an animal to forage efficiently. The bottom jaw needs to be prominent from a front view.

2. Head

Width across the eyes can indicate the overall dimension of the animal. A long narrow head is generally attached to a tall and narrow animal. A particularly short and wide head is generally attached to a more moderate animal. Hooding over the eye for protection is favorable.

3. Head Carriage

Well-structured and free moving animals naturally carry their head in a somewhat elevated fashion. In a relaxed stance, these animals can comfortably maintain their ear level equal to or above the top of their shoulder.

4. Chest/Girth

The engine room. Most of the major organs are beneath. A full and deep chest/girth is a true indicator of an animal’s constitution and it’s ability to maintain good condition. The chest/girth should blend into the animal’s dimension, not as a division between the front and rear.

5. Body Length

Length of body increases weight on the scales. Heavy and well-balanced cattle have extra length across all thirds. Nose to shoulder. Shoulder to hip. Hip to pin.

6. Tail Set

A neat tail set is not just an aesthetic preference. A correct tail set should finish off the spine smoothly with minimal deviation, up or down. Higher and more prominent tail sets often coincide with high pin bones, resulting in harder calving females.

7. Hip to Pin

Cattle that are longer and angled correctly from hip to pin have more reproductive area. An angle that is close to level from hip to pin is ideal. A sloping angle from hip to pin is preferred over an increasing angle. It’s not easy for a cow to push a calf up hill.

8. Depth of Flank

The depth of an animal from the hip down to it’s flank is a true indicator of it’s fleshing ability, constitution and dimension. Animals that cut up high in the flank can be harder doing, leaner and not as maternal.

9. Stifle

Bulging of the stifle muscle is an indicator of how much true muscle is within an animal. Heavily muscled bulls when examined from behind exhibit their widest point at the stifle.

10. Rear Legs

Rear leg structure is one of the most critical aspects of working bulls and functional females. Post Legged/Straight Legged bulls have a far greater risk of stifle breakdown and arthritic side effects which often co-inside with steep pastern angle. The ideal skeletal angle from stifle-hock-pastern is around 140 degrees. As this angle becomes straighter with post legged animals, their freedom of movement, suspension in movement and length of stride are compromised.

11. Butt Shape

Roundness of butt is a good indicator of muscularity in bulls. Heavier muscled bulls have an even curve that starts at the pins and continues down deep into the thigh. Lighter muscled bulls will express a straighter curve that does not fill deep into the thigh, regardless of condition. From behind, heavier muscled bulls are widest at the stifle and full between the legs. Lighter muscled bulls are widest at the hips and become narrower down to the thigh.

12. Sheath

Broken penises are the most common breakdown in working bulls. Selecting bulls with tighter and less pendulous sheaths can provide some defense against this. Bulls with tighter and less pendulous sheaths generally have more control during service and are less prone to sheath damage and infections.

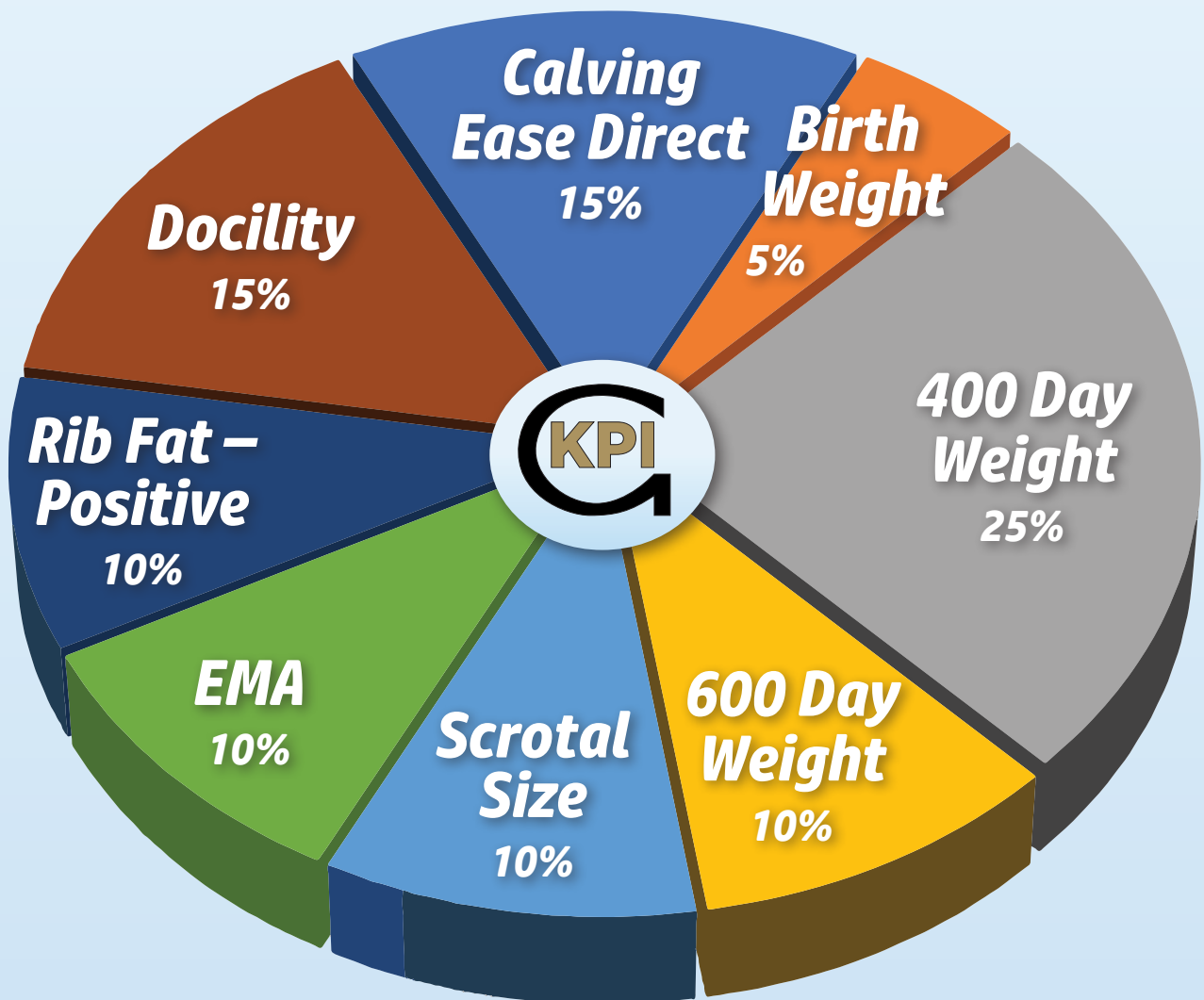
13. Hair Type

Slick, fine hair is more desirable than coarse and sometimes curly hair. Desirable hair type will often correlate to cattle that maintain good health and condition. Slick coated cattle will always present to their best at point of sale.

Glatz's



Key Performance Indicators



Glatz's "KPI" is an innovative 'EBV Only' analysis. The KPI formula has been developed in house at Glatz Black Angus and describes the sale bulls purely from an EBV standpoint. The key individual traits are combined with each individual trait's level of influence therefore establishing a total KPI value.

The KPI rates all bulls based on the EBV traits of most economic influence to Glatz's southern Australian based clientele. Self-replacing weaner producers whose calves are finished on grass or short-term grain.

Glatz's KPI specifically targets the profitability traits of its commercial cattle clients.

Note – Specific EBV's need to be considered when selecting bulls for heifer joining. We recommend Calving Ease Direct (CED) as the number one EBV of importance with some support from Birth Weight (BW) and Gestation Length (GL).



Reference Sires



Ellingson Rangeland (USA)

- * Top 4% of the breed for Foot Scores
- * Top 9-16% of the breed for 200 Growth and 400 Growth
- * Calving Ease



R605

Sire

Black Angus Geddes R605

- * Top 1% of the breed for Milk
- * Top 6% of the breed for Calving Ease Direct, 400 Growth, 600 Growth and Carcase Weight
- * Top 9% of the breed for Low Birth Weight



Baldrige 38 Special (USA)

- * Top 7-10% of the breed for 200 Growth, 400 Growth and 600 Growth
- * Top 11% of the breed for Foot Scores
- * Calving Ease, Low Birth Weight and Positive Fat



Reference Sire ELLINGSON RANGELAND^{PV} Ident: USA19590500
Born: 24/2/2019 **Genetic Status:** AMF,CAF,DDF,NHF,DWF,MAF,MHF,OHF,OSF,RGF **Mating Type:** Natural **Registration Level:** HBR
 BASIN RAINMAKER P175[#] CONNEALY THUNDER[#]
 BASIN RAINMAKER 2704[#] CTS REMEDY 1T01[#]
 BASIN ERICA 7520 BV[#] CTS 7V03 BELLEMERE MAID 9T02[#]
SIRE: USA17913751 BASIN RAINMAKER 4404^{PV} DAM: USA19588454 EA EMBLYNETTE 7009[#]
 BASIN PAYWEIGHT 107S[#] KOUPAL ADVANCE 28[#]
 BASIN JOY 1036[#] EA EMBLYNETTE 5241[#]
 BASIN JOY 566T[#] EA EMBLYNETTE 3249[#]

August 2024 TransTasman Angus Cattle Evaluation																	
TACE	Calving Ease Direct	Calving Ease Daughters	Gestation Length (days)	Birth Weight (kg)	200 Day Weight (kg)	400 Day Weight (kg)	600 Day Weight (kg)	MCW (kg)	Milk (kg)	Scrotal Size (cm)	CWT (kg)	EMA (sq cm)	Rib Fat (mm)	Rump Fat (mm)	RBY %	IMF %	Docility
EBV	+7.2	+7.8	-5.6	+4.3	+62	+105	+130	+109	+22	+1.9	+83	+8.5	-0.3	-3.0	+1.6	+0.4	+25
ACC	75%	55%	97%	96%	95%	94%	92%	89%	84%	91%	84%	82%	80%	79%	73%	83%	91%

Traits Observed: Genomics
 Statistics: Number of Herds: 23, Prog Analysed: 220, Genomic Prog: 51

Ellingson Rangeland represents one of the highest credentialled Angus herds in the US. Ellingson's Angus are renowned for breeding structurally sound bulls ideal for self-replacing cow herds. Rangeland sons excel for Calving Ease, Growth, Structural Soundness and Maternal Traits. Rangeland's first sons were extremely sought after in the 2023 Ellingson sale selling to \$160,000.

Reference Sire BLACK ANGUS GEDDES R605^{PV} Ident: SJQR605
Born: 16/8/2020 **Genetic Status:** AMF,CAF,DDF,NHF,DWF,MAF,MHF,OHF,OSF,RGF **Mating Type:** AI **Registration Level:** HBR
 SUMMITCREST COMPLETE 1P55[#] AYRVALE BARTEL E7^{PV}
 KM BROKEN BOW 002^{PV} LAWSONS INCREDIBLE H803^{PV}
 SUMMITCREST PRINCESS 0P12[#] LAWSONS DINKY DI E447^{PV}
SIRE: USA18886461 VARILEK GEDDES 7068^{PV} DAM: VLYL882 LAWSONS INCREDIBLE L882^E
 VARILEK CONFIDENCE 3004 0[#] TUWHARETOA REGENT D145^{PV}
 VARILEK GOLDIE 5051 506[#] LAWSONS REGENT J1425^{SV}
 VARILEK GOLDIE 3228 314[#] LAWSONS ULTIMATE F672[#]

August 2024 TransTasman Angus Cattle Evaluation																	
TACE	Calving Ease Direct	Calving Ease Daughters	Gestation Length (days)	Birth Weight (kg)	200 Day Weight (kg)	400 Day Weight (kg)	600 Day Weight (kg)	MCW (kg)	Milk (kg)	Scrotal Size (cm)	CWT (kg)	EMA (sq cm)	Rib Fat (mm)	Rump Fat (mm)	RBY %	IMF %	Docility
EBV	+8.2	+5.2	-7.8	+1.6	+60	+113	+148	+127	+31	+1.9	+89	+4.7	-3.3	-2.2	-0.2	+3.3	+9
ACC	72%	59%	90%	91%	87%	84%	84%	82%	75%	82%	74%	71%	72%	73%	64%	75%	80%

Traits Observed: GL,200WT,400WT,SC,Scan(EMA,Rib,Rump,IMF),DOC,Genomics
 Statistics: Number of Herds: 3, Prog Analysed: 54, Genomic Prog: 41

Black Angus Geddes R605 topped Glatz's 2022 SA sale @ \$36,000. The impressive performance of his progeny has now positioned him within the top percentiles of the Angus breed for Calving Ease, Low Birth Weight, Growth, Milk and IMF. His combination of curve bending performance in such good physical type is rare.

Reference Sire BALDRIDGE 38 SPECIAL^{PV} Ident: USA18229487
Born: 13/1/2015 **Genetic Status:** AMF,CAF,DDF,NHF,MAF,OSF,RGF **Mating Type:** Natural **Registration Level:** HBR
 BASIN FRANCHISE P142[#] SITZ UPWARD 307R^{SV}
 EF COMPLEMENT 8088^{PV} STYLES UPGRADE J59[#]
 EF EVERELDA ENTENSE 6117[#] PLAINVIEW LASSIE 71B[#]
SIRE: USA17082311 EF COMMANDO 1366^{PV} DAM: USA17149410 BALDRIDGE ISABEL Y69[#]
 B/R AMBUSH 28[#] BALDRIDGE KABOOM K243 KCF[#]
 RIVERBEND YOUNG LUCY W1470[#] BALDRIDGE ISABEL T935[#]
 RIVERBEND YOUNG LUCY T1080[#] BALDRIDGE ISABEL P4527[#]

August 2024 TransTasman Angus Cattle Evaluation																	
TACE	Calving Ease Direct	Calving Ease Daughters	Gestation Length (days)	Birth Weight (kg)	200 Day Weight (kg)	400 Day Weight (kg)	600 Day Weight (kg)	MCW (kg)	Milk (kg)	Scrotal Size (cm)	CWT (kg)	EMA (sq cm)	Rib Fat (mm)	Rump Fat (mm)	RBY %	IMF %	Docility
EBV	+7.2	+4.2	-5.0	+2.5	+63	+109	+143	+106	+19	+2.6	+76	+6.2	+1.6	-0.7	-0.4	+3.0	+15
ACC	93%	81%	99%	99%	98%	98%	98%	97%	96%	98%	93%	91%	91%	90%	87%	91%	99%

Traits Observed: Genomics
 Statistics: Number of Herds: 125, Prog Analysed: 2207, Genomic Prog: 1367

38 Special has been used for 4 consecutive joinings at Black Angus due to his Calving Ease, Explosive Growth, Sensible Mature Cow Weight, High EMA and particularly Good Feet. His progeny are born easily, fast growing, sound footed, neat uddered and well muscled. His young daughters are breeders of the future. 2 x sons have been retained at Black Angus.

Reference Sires



Karoo Main Event (AUS)

- * Top 2% of the breed for Positive Fat
- * Top 3% of the breed for Foot Scores
- * Proven Calving Ease



Black Angus Beast Mode R70

- * Top 1% of the breed for Foot Scores
- * Top 6% of the breed for Docility
- * Powerful Calving Ease Sire



Black Angus Wattle Street Q127

- * Top 1% of the breed for Foot Scores
- * Top 1% of the breed for Docility
- * Top 1-3% of the breed for 200 Growth, 400 Growth, 600 Growth and Carcase Weight



Reference Sire KAROO MAIN EVENT M367^{SV} Ident: NENM367
Born: 20/9/2016 **Genetic Status:** AMF,CAF,DDF,NHF,RGF **Mating Type:** Natural **Registration Level:** HBR
 SCHURRTOP REALITY X723[#] PAPA EQUATOR 2928[#]
 MATAURI REALITY 839[#] ARDROSSAN EQUATOR A241^{PV}
 MATAURI 06663[#] ARDROSSAN PRINCESS W38^{PV}
SIRE: NJWK12 MILWILLAH REALITY K12^{PV} DAM: NENG34 KAROO DORIS G34[#]
 COONAMBLE ELEVATOR E11^{PV} THREE TREES ROCK ON 0059[#]
 MILWILLAH BARUNAH H8^{SV} KAROO DORIS Y137^{SV}
 MILWILLAH BARUNAH A44[#] KAROO FLATS DORIS V96[#]

August 2024 TransTasman Angus Cattle Evaluation																	
TACE	Calving Ease Direct	Calving Ease Daughters	Gestation Length (days)	Birth Weight (kg)	200 Day Weight (kg)	400 Day Weight (kg)	600 Day Weight (kg)	MCW (kg)	Milk (kg)	Scrotal Size (cm)	CWT (kg)	EMA (sq cm)	Rib Fat (mm)	Rump Fat (mm)	RBV %	IMF %	Docility
EBV	+4.0	+3.6	-6.2	+2.8	+43	+93	+116	+99	+18	+2.4	+60	+1.6	+2.8	+5.4	-0.7	+2.9	+20
ACC	81%	66%	97%	97%	96%	96%	94%	89%	86%	95%	84%	81%	82%	82%	77%	82%	93%

Traits Observed: CE,BWT,200WT,400WT,600WT,SC,Scan(EMA,Rib,Rump,IMF),Genomics
 Statistics: Number of Herds: 4, Prog Analysed: 320, Genomic Prog: 142

Main Event is a proven sire who is breed elite for Foot Structure, Positive Fat and Calving Ease. Main Event sons have sold to \$75,000. Glatz's Black Angus have used Main Event for 3 x consecutive years and expect his daughters to perform particularly well when in production.

Reference Sire BLACK ANGUS BEAST MODE R70^{SV} Ident: SJQR70
Born: 18/4/2020 **Genetic Status:** AMFU,CAFU,DDFU,NHFU **Mating Type:** AI **Registration Level:** HBR
 C R A BEXTOR 872 5205 608[#] VERMONT DRAMBUIE D057^{PV}
 G A R PROPHET^{SV} BLACK ANGUS BRAMBUIE F197^{SV}
 G A R OBJECTIVE 1885[#] VERMONT MARTINA D442[#]
SIRE: USA17960722 BALDRIDGE BEAST MODE B074^{PV} DAM: SJQJ257 BLACK ANGUS EMPRESS J257[#]
 STYLES UPGRADE J59[#] BLACK ANGUS NEWSLINE B37^{SV}
 BALDRIDGE ISABEL Y69[#] BLACK ANGUS EMPRESS F171[#]
 BALDRIDGE ISABEL T935[#] BLACK ANGUS EMPRESS C41[#]

August 2024 TransTasman Angus Cattle Evaluation																	
TACE	Calving Ease Direct	Calving Ease Daughters	Gestation Length (days)	Birth Weight (kg)	200 Day Weight (kg)	400 Day Weight (kg)	600 Day Weight (kg)	MCW (kg)	Milk (kg)	Scrotal Size (cm)	CWT (kg)	EMA (sq cm)	Rib Fat (mm)	Rump Fat (mm)	RBV %	IMF %	Docility
EBV	+1.2	+0.5	-2.0	+4.3	+60	+97	+115	+103	+10	+3.4	+63	+6.9	-1.8	-3.4	+1.2	+0.8	+36
ACC	73%	63%	83%	87%	86%	84%	84%	81%	77%	82%	75%	73%	73%	74%	67%	76%	81%

Traits Observed: GL,BWT,200WT,400WT,600WT,SC,Scan(EMA,Rib,Rump,IMF),DOC,Genomics
 Statistics: Number of Herds: 1, Prog Analysed: 14, Genomic Prog: 1

Black Angus Beast Mode R70 was retained for his elite foot structure, powerful phenotype and superb docility. His dam produced another stud sire selling to Gilmandyke Angus in 2018.

Reference Sire BLACK ANGUS WATTLE STREET Q127^{SV} Ident: SJQQ127
Born: 15/5/2019 **Genetic Status:** AMF,CAF,DDF,NHF,DWF,MAF,MHF,OHF,OSF,RGF **Mating Type:** Natural **Registration Level:** HBR
 BASIN FRANCHISE P142[#] K C F BENNETT PERFORMER[#]
 EF COMPLEMENT 8088^{PV} WITHERSWOOD PERFORMER E49^{SV}
 EF EVERELDA ENTENSE 6117[#] WITHERSWOOD FLOWER C36^{SV}
SIRE: SJQL51 BLACK ANGUS COMPLEMENT L51^{SV} DAM: SJQK53 BLACK ANGUS MST K53[#]
 ARDROSSAN EQUATOR A241^{PV} ARDROSSAN ADMIRAL A2^{PV}
 BLACK ANGUS EXPO J119[#] BLACK ANGUS CLEOPATRA D25[#]
 BLACK ANGUS C804 EXPO A45[#] BLACK ANGUS CLEOPATRA A1[#]

August 2024 TransTasman Angus Cattle Evaluation																	
TACE	Calving Ease Direct	Calving Ease Daughters	Gestation Length (days)	Birth Weight (kg)	200 Day Weight (kg)	400 Day Weight (kg)	600 Day Weight (kg)	MCW (kg)	Milk (kg)	Scrotal Size (cm)	CWT (kg)	EMA (sq cm)	Rib Fat (mm)	Rump Fat (mm)	RBV %	IMF %	Docility
EBV	-14.0	-3.0	-1.4	+7.7	+68	+117	+156	+143	+18	+3.2	+102	+10.8	-1.4	-1.0	+1.2	-0.3	+49
ACC	71%	59%	84%	91%	91%	90%	91%	85%	80%	88%	79%	78%	78%	79%	72%	79%	88%

Traits Observed: BWT,200WT,400WT,DOC,Genomics
 Statistics: Number of Herds: 4, Prog Analysed: 88, Genomic Prog: 27

The first progeny of Black Angus Wattle Street Q127 sold to an equal top price of \$40,000 in Glatz's 2023 SA Bull Sale and averaged \$24,250. Wattle Street is a Proper Beef Bull. Super Sound, Super Docile, Super Thick and Heavy. Wattle Street ranks in the Top 1% of the Angus breed for Docility. Top 2% for 200 Growth, Foot Claw Shape and Foot Angle. Top 3% for 400 Growth and 600 Growth. Top 6% for EMA. Top 14% for Retail Beef Yield. Top 17% for Scrotal Size.



REFERENCE SIRE

Reference Sire STONEY POINT MOMENTUM M07^{PV} Ident: SYAM07
Born: 2/3/2016 **Genetic Status:** AMFU,CAFU,DDFU,NHFU **Mating Type:** Natural **Registration Level:** HBR
 BOOROOMOOKA UNDERTAKEN U170^{PV} LEACHMAN RIGHT TIME 338-5605[#]
 BOOROOMOOKA UNDERTAKEN Y145^{PV} WMR TIMELESS 458[#]
 BOOROOMOOKA UAAISE U101^{SV} WMR BLACKCAP 521[#]
SIRE: NORE11 RENNYLEA EDMUND E11^{PV} DAM: SGMK32 STONEY POINT YANKEE QUEEN K32^{PV}
 YTHANBRAE HENRY VIII U8^{SV} TC ABERDEEN 759^{SV}
 LAWSONS HENRY VIII Y5^{SV} STONEY POINT YANKEE QUEEN F153^{PV}
 YTHANBRAE DIRECTION T270[#] STONEY POINT YANKEE QUEEN D166^{SV}

August 2024 TransTasman Angus Cattle Evaluation																	
TACE	Calving Ease Direct	Calving Ease Daughters	Gestation Length (days)	Birth Weight (kg)	200 Day Weight (kg)	400 Day Weight (kg)	600 Day Weight (kg)	MCW (kg)	Milk (kg)	Scrotal Size (cm)	CWT (kg)	EMA (sq cm)	Rib Fat (mm)	Rump Fat (mm)	RBY %	IMF %	Docility
EBV	+5.0	-2.0	-6.1	+3.2	+47	+81	+106	+59	+21	+3.2	+66	+8.0	+5.5	+6.4	+0.2	+1.0	+17
ACC	80%	71%	95%	96%	95%	93%	93%	90%	86%	93%	83%	82%	82%	82%	77%	83%	93%

Traits Observed: BWT,200WT,400WT(x2),600WT,SC,Scan(EMA,Rib,Rump,IMF),Genomics
 Statistics: Number of Herds: 19, Prog Analysed: 160, Genomic Prog: 65

Momentum M07 was recruited as a proven mature natural joining sire for his blend of Calving Ease, High EMA, High Positive Fat and Super Sound Feet.

Reference Sire BLACK ANGUS DUSTY MARTIN R608^{PV} Ident: SJQR608
Born: 18/8/2020 **Genetic Status:** AMF,CAF,DDF,NHF,DWF,MAF,MHF,OHF,OSF,RGF **Mating Type:** AI **Registration Level:** HBR
 C R A BEXTOR 872 5205 608[#] MCC DAYBREAK[#]
 G A R PROPHET^{SV} G A R ANTICIPATION[#]
 G A R OBJECTIVE 1885[#] G A R 5050 NEW DESIGN 0530[#]
SIRE: QMUM13 CLUNES CROSSING DUSTY M13^{PV} DAM: YOAL81 YOTHAMURRA L81^{SV}
 TE MANIA BERKLEY B1^{PV} LAWSONS DINKY-DI Z191^{SV}
 CLUNES CROSSING GLORIOUS G1^{SV} LAWSONS DINKY DI E1121^{SV}
 TE MANIA LOWAN A1[#] LAWSONS SOLUTION C987[#]

August 2024 TransTasman Angus Cattle Evaluation																	
TACE	Calving Ease Direct	Calving Ease Daughters	Gestation Length (days)	Birth Weight (kg)	200 Day Weight (kg)	400 Day Weight (kg)	600 Day Weight (kg)	MCW (kg)	Milk (kg)	Scrotal Size (cm)	CWT (kg)	EMA (sq cm)	Rib Fat (mm)	Rump Fat (mm)	RBY %	IMF %	Docility
EBV	+1.1	+5.5	-7.9	+4.0	+66	+106	+123	+94	+7	+1.8	+65	+11.4	-2.9	-3.9	+0.9	+3.1	+13
ACC	69%	62%	87%	90%	88%	87%	86%	83%	78%	83%	78%	74%	75%	76%	67%	78%	83%

Traits Observed: GL,200WT,400WT,SC,Scan(EMA,Rib,Rump,IMF),DOC,Genomics
 Statistics: Number of Herds: 3, Prog Analysed: 28, Genomic Prog: 3

Black Angus Dusty Martin was retained from our 2020 drop. His combination of Physical Type and Structure combined with his High EMA and IMF is rarely achieved. He has proven to be a good option for heifer matings and mature cows alike. We look forward to seeing his first daughters in production in 2025.

Reference Sire RENNYLEA NATIONWIDE N432^{PV} Ident: NORN432
Born: 23/7/2017 **Genetic Status:** AMF,CAF,DDF,NHF,DWF,MAF,MHF,OSF,RGF **Mating Type:** ET **Registration Level:** HBR
 G A R NEW DESIGN 5050[#] TE MANIA YORKSHIRE Y437^{PV}
 G A R INGENUITY[#] TE MANIA BERKLEY B1^{PV}
 G A R OBJECTIVE 1067[#] TE MANIA LOWAN Z53[#]
SIRE: USA17366506 H P C A INTENSITY[#] DAM: NORH367 RENNYLEA H367^{SV}
 G A R PREDESTINED[#] TE MANIA INFINITY 04 379 AB[#]
 G A R PREDESTINED 287L[#] RENNYLEA F228[#]
 G A R OBJECTIVE 1885[#] RENNYLEA D6[#]

August 2024 TransTasman Angus Cattle Evaluation																	
TACE	Calving Ease Direct	Calving Ease Daughters	Gestation Length (days)	Birth Weight (kg)	200 Day Weight (kg)	400 Day Weight (kg)	600 Day Weight (kg)	MCW (kg)	Milk (kg)	Scrotal Size (cm)	CWT (kg)	EMA (sq cm)	Rib Fat (mm)	Rump Fat (mm)	RBY %	IMF %	Docility
EBV	+1.6	+6.0	-7.6	+4.9	+71	+125	+160	+166	+21	+0.7	+103	+5.6	-1.3	-2.9	+0.4	+1.3	+21
ACC	80%	72%	98%	98%	97%	97%	96%	91%	90%	96%	85%	85%	85%	85%	80%	85%	94%

Traits Observed: BWT,200WT,400WT,SC,Scan(EMA,Rib,Rump,IMF),DOC,Structure(Claw Set x 1, Foot Angle x 1),Genomics
 Statistics: Number of Herds: 20, Prog Analysed: 833, Genomic Prog: 446

Rennylea Nationwide was identified as a proven sire for the influence he was making at Pathfinder and Ardrossan. High growth Angus cattle that impress for performance, structure and phenotype.

THE ANGUS FOUNDATION

FUNDING THE FUTURE OF THE BEEF INDUSTRY

GLATZ BLACK ANGUS



“ As a family, we are thrilled to be donating the full sale proceeds for our registered heifer Black Angus Adelaide U9 to the Angus Foundation. This donation is a way that Glatz Black Angus can contribute to youth development through education, scholarships, awards and bursaries. Hopefully, this contribution may encourage others to also give back to the Angus Foundation.

BEN & SAMANTHA GLATZ
Glatz Black Angus



www.angusaustralia.com.au



Lot 1	BLACK ANGUS ADELAIDE U9^{SV}	Ident: SJQ23U9
Born: 31/3/2023	Genetic Status: AMFU,CAFU,DDFU,NHFU	Mating Type: AI
	MATAURI REALITY 839#	Registration Level: HBR
	MILWILLAH REALITY K12 ^{PV}	KM BROKEN BOW 002 ^{PV}
	MILWILLAH BARUNAH H8 ^{SV}	VARILEK GEDDES 7068 ^{PV}
SIRE: NENM367 KAROO MAIN EVENT M367 ^{SV}		VARILEK GOLDIE 5051 506#
	ARDROSSAN EQUATOR A241 ^{PV}	DAM: SJQ21S47 BLACK ANGUS ADELAIDE S47#
	KAROO DORIS G34#	BOORAGUL WT458N K11 ^{SV}
	KAROO DORIS Y137 ^{SV}	BLACK ANGUS ADELAIDE N137#
		BLACK ANGUS ADELAIDE L37#

August 2024 TransTasman Angus Cattle Evaluation																	
TACE	Calving Ease Direct	Calving Ease Daughters	Gestation Length (days)	Birth Weight (kg)	200 Day Weight (kg)	400 Day Weight (kg)	600 Day Weight (kg)	MCW (kg)	Milk (kg)	Scrotal Size (cm)	CWT (kg)	EMA (sq cm)	Rib Fat (mm)	Rump Fat (mm)	RBV %	IMF %	Docility
EBV	+3.1	+2.7	-6.9	+3.3	+47	+93	+120	+101	+20	+2.4	+66	+2.8	+1.3	+2.8	-0.4	+2.0	+17
ACC	57%	46%	82%	73%	69%	68%	68%	66%	61%	65%	59%	58%	60%	60%	54%	61%	63%

Traits Observed: GL,BWT,200WT,DOC

Black Angus Adelaide U9 is a magnificent stud female from a 2yo heifer. She has been selected from our top group of replacement heifers. Adelaide U9 expresses true quality of type and strength of pedigree - a real asset for a foundation breeder or an established herd. The prestigious Adelaide cow family traces right back to the original Glen Bold Adelaide 6th, born in 1968. Adelaide U9's sire, Karoo Main Event M367 is a genuine cow maker. He is a proven sire being breed elite for foot structure, positive fat and calving ease. Sons of Main Event have sold to \$75,000. Adelaide U9 has not been joined and sells open.

Glatz Black Angus

Spring Cattleman's Bull Sale 2024

SALE BULLS



Lot 2 BLACK ANGUS LUMBERJACK U69# **Ident: SJQ23U69**
Born: 20/4/2023 **Genetic Status:** AMFU,CAFU,DDFU,NHFU **Mating Type:** Natural **Registration Level:** APR
 G AR PROPHET^{SV} MILWILLAH ELEVATOR H76^{PV}
 BALDRIDGE BEAST MODE B074^{PV} PINORA LEVI L73[#]
 BALDRIDGE ISABEL Y69[#] PINORA LILA G68[#]
SIRE: WKGQ48 DIAMOND ONE BEAST MODE Q48^{SV} **DAM: SJQQ147 BLACK ANGUS ENTERPRISE Q147[#]**
 AYRVALE BARTEL E7^{PV} Dociility Star: 4.5 INDIAMBAH ALEXANDER THE GREAT A7^{SV}
 DIAMOND TREE BARTEL L60[#] BLACK ANGUS ENTERPRISE G51[#]
 DIAMOND TREE HOOVER DAM J88[#] BLACK ANGUS ENTERPRISE E139[#]

August 2024 TransTasman Angus Cattle Evaluation																	
TACE	Calving Ease Direct	Calving Ease Daughters	Gestation Length (days)	Bith Weight (kg)	200 Day Weight (kg)	400 Day Weight (kg)	600 Day Weight (kg)	MCW (kg)	Milk (kg)	Scrotal Size (cm)	CWT (kg)	EMA (sq cm)	Rib Fat (mm)	Rump Fat (mm)	RBY %	IMF %	Dociility
EBV	+0.8	+6.1	-4.7	+4.0	+58	+95	+120	+104	+17	+1.8	+72	+6.7	-0.9	-1.4	+0.8	+2.3	+20
ACC	54%	45%	61%	72%	68%	69%	67%	63%	57%	72%	57%	55%	57%	57%	53%	58%	61%

Traits Observed: BWT,200WT,400WT,SC,Scan(EMA,Rib,Rump,IMF),DOC

Maternal production history runs deep in this fellow's pedigree. His dam produced a \$22,000 son in 2023 selling to Nicolai Farms. His grand dam produced 10 natural calves including an \$18,000 son selling to Mark and Leah Jacob in 2024. His great grand dam and her daughters posted 4 of the first 9 lots in 2021, averaging \$17,000. That's the story.

DOCILITY ST★R RATING
 ★ ★ ★ ★ ↓
Scrotal Circumference: 38cm

KPI
151
Age: 16.5 months

Purchaser..... \$.....

Lot 3 BLACK ANGUS BLOCKBUSTER U15# **Ident: SJQ23U15**
Born: 2/4/2023 **Genetic Status:** AMFU,CAFU,DDFU,NHFU **Mating Type:** AI **Registration Level:** HBR
 MATAURI REALITY 839[#] KM BROKEN BOW 002^{PV}
 MILWILLAH REALITY K12^{PV} VARILEK GEDDES 7068^{PV}
 MILWILLAH BARUNAH H8^{SV} VARILEK GOLDIE 5051 506[#]
SIRE: NENM367 KAROO MAIN EVENT M367^{SV} **DAM: SJQ21S55 BLACK ANGUS DREAM S55[#]**
 ARDROSSAN EQUATOR A241^{PV} BOORAGUL WT458N K11^{SV}
 KAROO DORIS G34[#] BLACK ANGUS DREAM N157[#]
 KAROO DORIS Y137^{SV} BLACK ANGUS DREAM L47[#]

August 2024 TransTasman Angus Cattle Evaluation																	
TACE	Calving Ease Direct	Calving Ease Daughters	Gestation Length (days)	Bith Weight (kg)	200 Day Weight (kg)	400 Day Weight (kg)	600 Day Weight (kg)	MCW (kg)	Milk (kg)	Scrotal Size (cm)	CWT (kg)	EMA (sq cm)	Rib Fat (mm)	Rump Fat (mm)	RBY %	IMF %	Dociility
EBV	+4.0	+3.4	-5.6	+2.6	+49	+96	+118	+99	+19	+2.9	+68	+3.3	+0.5	+2.1	-0.5	+2.9	+21
ACC	57%	47%	82%	73%	69%	70%	68%	66%	61%	74%	59%	58%	60%	60%	54%	61%	63%

Traits Observed: GL,BWT,200WT,400WT,SC,Scan(EMA,Rib,Rump,IMF),DOC

The first son of Karoo Main Event offered at Black Angus. We like the Main Event progeny so much to have used him for 3 x consecutive joinings. Blockbuster U15 is a heifer's first calf and suitable for heifer joining. Almost 3 for IMF and Positive Fat. 40cm Scrotal.

DOCILITY ST★R RATING
 ★ ★ ★ ★ ↓
Scrotal Circumference: 40cm

KPI
174
Age: 17 months

Purchaser..... \$.....

Top 20% Top 50%



Lot 4 BLACK ANGUS HARRY TAYLOR U26^{SV} Ident: SJQ23U26

Born: 3/4/2023 **Genetic Status:** AMFU,CAFU,DDFU,NHFU **Mating Type:** AI **Registration Level:** HBR
 KM BROKEN BOW 002^{PV} BLACK ANGUS COMPLEMENT L51^{SV}
 VARILEK GEDDES 7068^{PV} BLACK ANGUS WATTLE STREET Q127^{SV}
 VARILEK GOLDIE 5051 506[#] BLACK ANGUS MST K53[#]
SIRE: SJQR605 BLACK ANGUS GEDDES R605^{PV} **DAM: SJQ21S125 BLACK ANGUS ADELAIDE S125[#]**
 LAWSONS INCREDIBLE H803^{PV} KAROO KNOCKOUT K176^{SV}
 LAWSONS INCREDIBLE L882^E BLACK ANGUS ADELAIDE P19[#]
 LAWSONS REGENT J1425^{SV} BLACK ANGUS ADELAIDE K109[#]

August 2024 TransTasman Angus Cattle Evaluation																	
TACE	Calving Ease Direct	Calving Ease Daughters	Gestation Length (days)	Bith Weight (kg)	200 Day Weight (kg)	400 Day Weight (kg)	600 Day Weight (kg)	MCW (kg)	Milk (kg)	Scrotal Size (cm)	CWT (kg)	EMA (sq cm)	Rib Fat (mm)	Rump Fat (mm)	RBY %	IMF %	Docility
EBV	+5.6	+3.4	-7.2	+4.5	+62	+117	+147	+135	+22	+1.9	+94	+4.1	-3.0	-2.9	+0.2	+1.8	+23
ACC	61%	50%	81%	80%	81%	79%	79%	75%	71%	76%	66%	65%	65%	67%	56%	71%	73%

Traits Observed: GL,BWT,200WT,400WT,SC,Scan(EMA,Rib,Rump,IMF),DOC,Genomics

The first Black Angus R605 son to be offered in Australia. R605 topped our 2022 sale at \$36,000. Harry Taylor is a heifer's first calf and suitable for heifer joining. He is positioned inside the Top 7% of the Angus breed for 400 Growth, 600 Growth, Days to Calving, Carcase Weight and AB-L. Top 10-21% for Calving Ease, Gestation Length, 200 Growth, Milk, Feed Efficiency and Foot Angle. #9 ranked KPI bull in the sale. Semen marketing rights retained.

DOCILITY ST★R RATING
 ★ ★ ★ ★ ★
 Scrotal Circumference: 35cm

KPI
200
 Age: 17 months

Purchaser..... \$.....

Lot 5 BLACK ANGUS RANGELAND U53[#] Ident: SJQ23U53

Born: 8/4/2023 **Genetic Status:** AMFU,CAFU,DDFU,NHFU **Mating Type:** AI **Registration Level:** APR
 BASIN RAINMAKER 2704[#] VISIONTOPLINE ROYAL STOCKMAN[#]
 BASIN RAINMAKER 4404^{PV} VISION UNANIMOUS 1418^{PV}
 BASIN JOY 1036[#] VISION EDELLA 665[#]
SIRE: USA19590500 ELLINGSON RANGELAND^{PV} **DAM: SJQQ25 BLACK ANGUS WILCOOLA Q25[#]**
 CTS REMEDY 1T01[#] JAROBEE F119^{SV}
 EA EMBLYNETTE 7009[#] BLACK ANGUS WILCOOLA K229[#]
 EA EMBLYNETTE 5241[#] BLACK ANGUS WILCOOLA E87[#]

August 2024 TransTasman Angus Cattle Evaluation																	
TACE	Calving Ease Direct	Calving Ease Daughters	Gestation Length (days)	Bith Weight (kg)	200 Day Weight (kg)	400 Day Weight (kg)	600 Day Weight (kg)	MCW (kg)	Milk (kg)	Scrotal Size (cm)	CWT (kg)	EMA (sq cm)	Rib Fat (mm)	Rump Fat (mm)	RBY %	IMF %	Docility
EBV	+4.8	+5.6	-8.7	+5.2	+62	+105	+131	+117	+17	+2.4	+81	+6.4	-0.5	-2.8	+1.2	+0.2	+18
ACC	55%	42%	83%	73%	70%	71%	68%	66%	60%	73%	60%	58%	60%	59%	54%	61%	63%

Traits Observed: GL,BWT,200WT,400WT,SC,Scan(EMA,Rib,Rump,IMF),DOC

One of the first Ellingson Rangeland son's to sell in Australia and the first at Black Angus. Rangeland U53 is a heifer joining option that will impress. Within the Top 5-28% of the Angus breed for Calving Ease Direct, Calving Ease Dtrs, Gestation Length, 200 Growth, 400 Growth, 600 Growth, Carcase Weight, Retail Beef Yield, ABI and AB-L. #10 ranked KPI. Related to Lot 21 in this sale.

DOCILITY ST★R RATING
 ★ ★ ★ ★ ★
 Scrotal Circumference: 39cm

KPI
197
 Age: 17 months

Purchaser..... \$.....

Lot 6 BLACK ANGUS BLOCKBUSTER U5[#] Ident: SJQ23U5

Born: 31/3/2023 **Genetic Status:** AMFU,CAFU,DD1%,NHFU **Mating Type:** AI **Registration Level:** HBR
 MATAURI REALITY 839[#] EF COMPLEMENT 8088^{PV}
 MILWILLAH REALITY K12^{PV} BLACK ANGUS COMPLEMENT L51^{SV}
 MILWILLAH BARUNAH H8^{SV} BLACK ANGUS EXPO J119[#]
SIRE: NENM367 KAROO MAIN EVENT M367^{SV} **DAM: SJQ21S11 BLACK ANGUS BUGSY S11[#]**
 ARDROSSAN EQUATOR A241^{PV} PINORA LEVI L73[#]
 KAROO DORIS G34[#] BLACK ANGUS BUGSY P303[#]
 KAROO DORIS Y137^{SV} BLACK ANGUS EFC BUGSY L7[#]

August 2024 TransTasman Angus Cattle Evaluation																	
TACE	Calving Ease Direct	Calving Ease Daughters	Gestation Length (days)	Bith Weight (kg)	200 Day Weight (kg)	400 Day Weight (kg)	600 Day Weight (kg)	MCW (kg)	Milk (kg)	Scrotal Size (cm)	CWT (kg)	EMA (sq cm)	Rib Fat (mm)	Rump Fat (mm)	RBY %	IMF %	Docility
EBV	+1.3	+4.7	-7.1	+4.6	+55	+109	+142	+125	+19	+2.6	+82	+3.4	+1.9	+3.4	-0.3	+1.8	+18
ACC	57%	46%	82%	73%	69%	70%	68%	65%	60%	74%	59%	58%	60%	60%	54%	61%	63%

Traits Observed: GL,BWT,200WT,400WT,SC,Scan(EMA,Rib,Rump,IMF),DOC

Blockbuster U5 has been the pick from many astute judges pre-sale. He is a true beef bull. This Main Event son is Top 6% of the Angus breed for Positive Rump Fat - did anyone mention the dry year? Top 10-14% for Gestation Length, 400 Growth, 600 Growth, Carcase Weight and Positive Rib Fat. 40cm Scrotal. Equal 10th for KPI. Semen marketing rights retained.

DOCILITY ST★R RATING
 ★ ★ ★ ★ ★
 Scrotal Circumference: 40cm

KPI
197
 Age: 17 months

Purchaser..... \$.....

Top 20% Top 50%



Lot 7 BLACK ANGUS BLOCKBUSTER U8# Ident: SJQ23U8

Born: 31/3/2023 **Genetic Status:** AMFU,CAFU,DDFU,NHFU **Mating Type:** AI **Registration Level:** HBR
 MATAURI REALITY 839# KM BROKEN BOW 002^{PV}
 MILWILLAH REALITY K12^{PV} VARILEK GEDDES 7068^{PV}
 MILWILLAH BARUNAH H8^{SV} VARILEK GOLDIE 5051 506#
SIRE: NENM367 KAROO MAIN EVENT M367^{SV} **DAM: SJQ21S20 BLACK ANGUS ADELAIDE S20#**
 ARDROSSAN EQUATOR A241^{PV} STORTH OAKS JACK J7^{SV}
 KAROO DORIS G34# BLACK ANGUS ADELAIDE Q45#
 KAROO DORIS Y137^{SV} BLACK ANGUS ADELAIDE K109#

August 2024 TransTasman Angus Cattle Evaluation																	
TACE	Calving Ease Direct	Calving Ease Daughters	Gestation Length (days)	Birth Weight (kg)	200 Day Weight (kg)	400 Day Weight (kg)	600 Day Weight (kg)	MCW (kg)	Milk (kg)	Scrotal Size (cm)	CWT (kg)	EMA (sq cm)	Rib Fat (mm)	Rump Fat (mm)	RBY %	IMF %	Docility
EBV	+6.8	+5.6	-7.6	+2.2	+46	+96	+122	+109	+21	+3.5	+64	+2.1	-0.8	+0.1	+0.1	+1.6	+16
ACC	57%	47%	83%	73%	69%	70%	68%	65%	61%	74%	59%	58%	60%	60%	54%	62%	63%

Traits Observed: GL,BWT,200WT,400WT,SC,Scan(EMA,Rib,Rump,IMF),DOC

The impressive Main Event sons keep rolling. Blockbuster U8 is another heifer's first calf ideal for heifer joining. A truly balanced data set on offer with this Cow Maker. Inside the Top 23% of the Angus breed for Calving Ease Direct, Calving Ease Daughters, Gestation Length, Low Birth Weight, Milk and Scrotal Size. Positive Fat. 4.5 Star Docility Rating.

DOCILITY ST★R RATING



Scrotal Circumference: 41cm



Age: 17 months

Purchaser..... \$.....

Lot 8 BLACK ANGUS BLOCKBUSTER U48# Ident: SJQ23U48

Born: 7/4/2023 **Genetic Status:** AMFU,CAFU,DDFU,NHFU **Mating Type:** AI **Registration Level:** HBR
 MATAURI REALITY 839# BLACK ANGUS COMPLEMENT L51^{SV}
 MILWILLAH REALITY K12^{PV} BLACK ANGUS WATTLE STREET Q127^{SV}
 MILWILLAH BARUNAH H8^{SV} BLACK ANGUS MST K53#
SIRE: NENM367 KAROO MAIN EVENT M367^{SV} **DAM: SJQ21S146 BLACK ANGUS DREAM S146^{SV}**
 ARDROSSAN EQUATOR A241^{PV} BLACK ANGUS BRAMBUIE F197^{SV}
 KAROO DORIS G34# BLACK ANGUS DREAM K207#
 KAROO DORIS Y137^{SV} VERMONT DREAM D441#

August 2024 TransTasman Angus Cattle Evaluation																	
TACE	Calving Ease Direct	Calving Ease Daughters	Gestation Length (days)	Birth Weight (kg)	200 Day Weight (kg)	400 Day Weight (kg)	600 Day Weight (kg)	MCW (kg)	Milk (kg)	Scrotal Size (cm)	CWT (kg)	EMA (sq cm)	Rib Fat (mm)	Rump Fat (mm)	RBY %	IMF %	Docility
EBV	-1.5	+0.2	-4.8	+4.8	+49	+99	+125	+110	+18	+2.5	+69	+3.6	+1.7	+3.0	-0.3	+1.8	+28
ACC	56%	45%	82%	72%	69%	70%	68%	65%	60%	73%	59%	57%	59%	59%	54%	61%	63%

Traits Observed: GL,BWT,200WT,400WT,SC,Scan(EMA,Rib,Rump,IMF),DOC

The Blockbuster Show rolls on! This fellow is a heifer's first calf with a truly grand pedigree combining Wattle Street and Vermont Dream D441. His grand dam is due on her 11th natural calf in 2025. Blockbuster U48 is Top 8% of the Angus breed for Positive Rump Fat. Top 16% for Positive Rib Fat. Top 21% for Docility.

DOCILITY ST★R RATING



Scrotal Circumference: 39cm



Age: 17 months

Purchaser..... \$.....

Lot 9 BLACK ANGUS WATTLE STREET U23^{PV} Ident: SJQ23U23

Born: 3/4/2023 **Genetic Status:** AMFU,CAFU,DDFU,NHFU **Mating Type:** ET **Registration Level:** HBR
 EF COMPLEMENT 8088^{PV} SCHURRTOP REALITY X723#
 BLACK ANGUS COMPLEMENT L51^{SV} MATAURI REALITY 839#
 BLACK ANGUS EXPO J119# MATAURI 06663#
SIRE: SJQQ127 BLACK ANGUS WATTLE STREET Q127^{SV} **DAM: SYAM173 STONEY POINT YANKEE QUEEN M173^{SV}**
 WITHERSWOOD PERFORMER E49^{SV} SITZ WISDOM 481#
 BLACK ANGUS MST K53# STONEY POINT YANKEE QUEEN K197^{PV}
 BLACK ANGUS CLEOPATRA D25# STONEY POINT YANKEE QUEEN H193^{SV}

August 2024 TransTasman Angus Cattle Evaluation																	
TACE	Calving Ease Direct	Calving Ease Daughters	Gestation Length (days)	Birth Weight (kg)	200 Day Weight (kg)	400 Day Weight (kg)	600 Day Weight (kg)	MCW (kg)	Milk (kg)	Scrotal Size (cm)	CWT (kg)	EMA (sq cm)	Rib Fat (mm)	Rump Fat (mm)	RBY %	IMF %	Docility
EBV	-7.0	+5.9	-3.2	+7.0	+67	+113	+153	+155	+18	+5.0	+81	+3.7	-0.3	+0.9	+0.1	+0.0	+32
ACC	65%	55%	81%	82%	83%	81%	81%	78%	74%	79%	70%	69%	69%	70%	61%	74%	77%

Traits Observed: BWT,200WT,400WT,SC,Scan(EMA,Rib,Rump,IMF),DOC,Genomics

In 2021 we purchased Stoney Point Yankee Queen M173 in partnership for the South Australian Record Female Price of \$46,000. Combine her with one of the best Angus sires we have bred in Black Angus Wattle Street Q127 and this is the outcome - a Proper Beef Bull. Wattle Street U23 is ranked in the Top 2-6% of the Angus breed for 200 Growth, 400 Growth, 600 Growth, Scrotal Size, Foot Claw Shape and Foot Angle. Top 13% for Docility. Top 16% for Carcase Weight. #6 KPI. Largest Scrotal Size in the sale @ 42.5cm 4.5 Star Docility Rating.

DOCILITY ST★R RATING



Scrotal Circumference: 42.5cm



Age: 17 months

Purchaser..... \$.....

Top 20% Top 50%



Lot 10 BLACK ANGUS RANGELAND U13# Ident: SJQ23U13

Born: 1/4/2023 **Genetic Status:** AMFU,CAFU,DDFU,NHFU **Mating Type:** AI **Registration Level:** HBR
 BASIN RAINMAKER 2704# MATAURI REALITY 839#
 BASIN RAINMAKER 4404^{PV} GLENOCH-JK MAKAAHU M602^{SV}
 BASIN JOY 1036# GLENOCH-JK ANN K615^{SV}
SIRE: USA19590500 ELLINGSON RANGELAND^{PV} **DAM: SJQ21S79 BLACK ANGUS JENNIFER S79#**
 CTS REMEDY 1T01# BOORAGUL WT458N K11^{SV}
 EA EMBLYNETTE 7009# BLACK ANGUS JENNIFER P289#
 EA EMBLYNETTE 5241# BLACK ANGUS JENNIFER L211#

August 2024 TransTasman Angus Cattle Evaluation																	
TACE	Calving Ease Direct	Calving Ease Daughters	Gestation Length (days)	Bith Weight (kg)	200 Day Weight (kg)	400 Day Weight (kg)	600 Day Weight (kg)	MCW (kg)	Milk (kg)	Scrotal Size (cm)	CWT (kg)	EMA (sq cm)	Rib Fat (mm)	Rump Fat (mm)	RBY %	IMF %	Docility
EBV	+3.9	+3.7	-6.7	+5.9	+65	+113	+145	+131	+22	+1.8	+92	+9.6	-1.2	-3.7	+1.4	+0.7	+27
ACC	56%	44%	82%	73%	69%	70%	67%	66%	60%	73%	59%	58%	59%	58%	53%	61%	63%

Traits Observed: GL,BWT,200WT,400WT,SC,Scan(EMA,Rib,Rump,IMF),DOC

Rangeland U13 is the #1 ranked KPI bull in the sale. A heifer's first calf suitable for heifer joining. He ranks in the Top 4-8% of the Angus breed for 200 Growth, 400 Growth, 600 Growth, Carcase Weight and Retail Beef Yield. Top 14-24% for Milk, Docility, EMA, NFI, ABI and AB-L. His grand dam produced a son selling to New Generation Angus Stud, WA in 2023.

DOCILITY ST★R RATING



Scrotal Circumference: 35cm

KPI
220

Age: 17 months

Purchaser..... \$.....

Lot 11 BLACK ANGUS 38 SPECIAL U28# Ident: SJQ23U28

Born: 3/4/2023 **Genetic Status:** AMFU,CAFU,DDFU,NHFU **Mating Type:** AI **Registration Level:** HBR
 EF COMPLEMENT 8088^{PV} VISIONTOPLINE ROYAL STOCKMAN#
 EF COMMANDO 1366^{PV} VISION UNANIMOUS 1418^{PV}
 RIVERBEND YOUNG LUCY W1470# VISION EDELLA 665#
SIRE: USA18229487 BALDRIDGE 38 SPECIAL^{PV} **DAM: SJQ21S44 BLACK ANGUS CLEO S44#**
 STYLES UPGRADE J59# CONNEALY FINAL PRODUCT^{PV}
 BALDRIDGE ISABEL Y69# BLACK ANGUS CLEO H147#
 BALDRIDGE ISABEL T935# BLACK ANGUS CLEO B51#

August 2024 TransTasman Angus Cattle Evaluation																	
TACE	Calving Ease Direct	Calving Ease Daughters	Gestation Length (days)	Bith Weight (kg)	200 Day Weight (kg)	400 Day Weight (kg)	600 Day Weight (kg)	MCW (kg)	Milk (kg)	Scrotal Size (cm)	CWT (kg)	EMA (sq cm)	Rib Fat (mm)	Rump Fat (mm)	RBY %	IMF %	Docility
EBV	+2.7	+1.8	-5.5	+5.5	+64	+109	+143	+123	+15	+3.2	+82	+0.7	+0.9	-0.5	-0.6	+2.2	+19
ACC	62%	53%	83%	73%	70%	71%	70%	68%	64%	74%	62%	61%	63%	63%	58%	64%	65%

Traits Observed: GL,BWT,200WT,400WT,SC,Scan(EMA,Rib,Rump,IMF),DOC

38 Special has been one of the most complete sires ever used at Black Angus - only 2 sons in this sale. 38 Special U28 is a heifer's first calf and suitable for heifer joining. #7 ranked KPI bull in the sale. A 3/4 brother to this fellow has been retained at Black Angus. Calving Ease, Positive Fat and High EMA.

DOCILITY ST★R RATING



Scrotal Circumference: 39.5cm

KPI
201

Age: 17 months

Purchaser..... \$.....

Lot 12 BLACK ANGUS DUSTY MARTIN U21# Ident: SJQ23U21

Born: 2/4/2023 **Genetic Status:** AMFU,CAFU,DDFU,NHFU **Mating Type:** AI **Registration Level:** HBR
 G A R PROPHET^{SV} BLACK ANGUS COMPLEMENT L51^{SV}
 CLUNES CROSSING DUSTY M13^{PV} BLACK ANGUS WATTLE STREET Q127^{SV}
 CLUNES CROSSING GLORIOUS G1^{SV} BLACK ANGUS MST K53#
SIRE: SJQR608 BLACK ANGUS DUSTY MARTIN R608^{PV} **DAM: SJQ21S116 BLACK ANGUS CURRAJONG S116#**
 G A R ANTICIPATION# STORTH OAKS JACK J7^{SV}
 YOTHAMURRA L81^{SV} BLACK ANGUS CURRAJONG P3#
 LAWSONS DINKY DI E1121^{SV} BLACK ANGUS CURRAJONG M43#

August 2024 TransTasman Angus Cattle Evaluation																	
TACE	Calving Ease Direct	Calving Ease Daughters	Gestation Length (days)	Bith Weight (kg)	200 Day Weight (kg)	400 Day Weight (kg)	600 Day Weight (kg)	MCW (kg)	Milk (kg)	Scrotal Size (cm)	CWT (kg)	EMA (sq cm)	Rib Fat (mm)	Rump Fat (mm)	RBY %	IMF %	Docility
EBV	-0.9	+4.0	-6.1	+5.4	+64	+109	+136	+120	+13	+1.1	+79	+11.2	-2.7	-3.8	+1.4	+1.2	+18
ACC	52%	45%	81%	71%	67%	68%	65%	63%	57%	71%	57%	56%	58%	58%	51%	61%	59%

Traits Observed: GL,BWT,200WT,400WT,SC,Scan(EMA,Rib,Rump,IMF),DOC

The first Black Angus Dusty Martin R608 son to be sold. Dusty Martin U21 is a heifer's first calf. He is placed in the Top 6-20% of the Angus breed for 200 Growth, 400 Growth, 600 Growth, EMA, Retail Beef Yield, ABI nad AB-L.Docility Star Rating at 4.5

DOCILITY ST★R RATING



Scrotal Circumference: 34cm

KPI
170

Age: 17 months

Purchaser..... \$.....

Top 20% Top 50%



Lot 13 BLACK ANGUS NATIONWIDE U31# Ident: SJQ23U31

Born: 4/4/2023 Genetic Status: AMFU,CAFU,DDFU,NHFU Mating Type: AI Registration Level: HBR

G A R INGENUITY# SYDGEN EXCEED 3223^{PV}
 H P C A INTENSITY# SYDGEN ENHANCE^{SV}
 G A R PREDESTINED 287L# SYDGEN RITA 2618#

SIRE: NOR432 RENNYLEA NATIONWIDE N432^{PV} **DAM: SYAQ191 STONEY POINT BLACKBIRD LADY Q191^{PV}**
 TE MANIA BERKLEY B1^{PV} SITZ WISDOM 481T#
 RENNYLEA H367^{SV} STONEY POINT BLACKBIRD LADY K187^{SV}
 RENNYLEA F228# STONEY POINT BLACKBIRD LADY H341#

August 2024 TransTasman Angus Cattle Evaluation

TACE	Calving Ease Direct	Calving Ease Daughters	Gestation Length (days)	Birth Weight (kg)	200 Day Weight (kg)	400 Day Weight (kg)	600 Day Weight (kg)	MCW (kg)	Milk (kg)	Scrotal Size (cm)	CWT (kg)	EMA (sq cm)	Rib Fat (mm)	Rump Fat (mm)	RBY %	IMF %	Docility
EBV	-0.7	+3.0	-7.4	+6.4	+67	+118	+149	+138	+19	+2.1	+87	+6.7	-1.4	-1.5	+0.2	+2.3	+19
ACC	62%	54%	83%	74%	75%	72%	73%	71%	67%	75%	64%	64%	64%	65%	58%	67%	69%

Traits Observed: GL,BWT,200WT,400WT,SC,Scan(EMA,Rib,Rump,IMF),DOC

The first son of Rennylea Nationwide to sell at Black Angus. Nationwide was identified as a proven sire for the influence he was making at Pathfinder and Ardrossan. High growth Angus cattle that impress for performance, structure and phenotype. Black Angus Nationwide U31 is just that. Top 4-6% of the Angus breed for 200 Growth, 400 Growth and 600 Growth. Top 8-13% of the breed for Carcase Weight, Feed Efficiency and ABI-L. A brother to this fellow sold as Lot 1 in this sale for 2023. Semen marketing rights retained.

DOCILITY ST★R RATING



Scrotal Circumference: 39cm



185

Age: 17 months

Purchaser..... \$.....

Lot 14 BLACK ANGUS RANGELAND U33# Ident: SJQ23U33

Born: 4/4/2023 Genetic Status: AMFU,CAFU,DDFU,NHFU Mating Type: AI Registration Level: HBR

BASIN RAINMAKER 2704# EF COMMANDO 1366^{PV}
 BASIN RAINMAKER 4404^{PV} BALDRIDGE 38 SPECIAL^{PV}
 BASIN JOY 1036# BALDRIDGE ISABEL Y69#

SIRE: USA19590500 ELLINGSON RANGELAND^{PV} **DAM: SJQ21S26 BLACK ANGUS EMPRESS S26#**
 CTS REMEDY 1T01# STORTH OAKS JACK J7^{SV}
 EA EMBLYNETTE 7009# BLACK ANGUS EMPRESS Q66#
 EA EMBLYNETTE 5241# BLACK ANGUS EMPRESS L127#

August 2024 TransTasman Angus Cattle Evaluation

TACE	Calving Ease Direct	Calving Ease Daughters	Gestation Length (days)	Birth Weight (kg)	200 Day Weight (kg)	400 Day Weight (kg)	600 Day Weight (kg)	MCW (kg)	Milk (kg)	Scrotal Size (cm)	CWT (kg)	EMA (sq cm)	Rib Fat (mm)	Rump Fat (mm)	RBY %	IMF %	Docility
EBV	+6.2	+5.8	-4.8	+3.6	+59	+100	+125	+103	+21	+2.2	+73	+7.6	+0.3	-2.0	+0.7	+1.6	+13
ACC	56%	44%	83%	73%	69%	70%	67%	66%	59%	73%	59%	58%	59%	58%	53%	61%	62%

Traits Observed: GL,BWT,200WT,400WT,SC,Scan(EMA,Rib,Rump,IMF),DOC

Lots 14 and 15 have almost identical pedigrees! It's no surprise that they have ended up side by side with identical KPI's and very similar data. A great opportunity to acquire the pair. An astute cattle breeder, feeder and marketer took a real liking to Rangeland U33. He is a heifers first calf. Suitable for heifer joining.

DOCILITY ST★R RATING



Scrotal Circumference: 37.5cm



188

Age: 17 months

Purchaser..... \$.....

Lot 15 BLACK ANGUS RANGELAND U68# Ident: SJQ23U68

Born: 16/4/2023 Genetic Status: AMFU,CAFU,DDFU,NHFU Mating Type: AI Registration Level: HBR

BASIN RAINMAKER 2704# TE MANIA EMPEROR E343^{PV}
 BASIN RAINMAKER 4404^{PV} STORTH OAKS JACK J7^{SV}
 BASIN JOY 1036# STORTH OAKS G183#

SIRE: USA19590500 ELLINGSON RANGELAND^{PV} **DAM: SJQQ66 BLACK ANGUS EMPRESS Q66#**
 CTS REMEDY 1T01# WILLOW FIELDS HANS H37^{PV}
 EA EMBLYNETTE 7009# BLACK ANGUS EMPRESS L127#
 EA EMBLYNETTE 5241# BLACK ANGUS W71 EMPRESS F193#

August 2024 TransTasman Angus Cattle Evaluation

TACE	Calving Ease Direct	Calving Ease Daughters	Gestation Length (days)	Birth Weight (kg)	200 Day Weight (kg)	400 Day Weight (kg)	600 Day Weight (kg)	MCW (kg)	Milk (kg)	Scrotal Size (cm)	CWT (kg)	EMA (sq cm)	Rib Fat (mm)	Rump Fat (mm)	RBY %	IMF %	Docility
EBV	+3.8	+4.8	-3.1	+5.0	+59	+97	+123	+106	+20	+1.9	+73	+9.1	-0.1	-2.2	+1.3	+0.9	+22
ACC	56%	44%	83%	68%	69%	69%	68%	66%	60%	73%	59%	58%	60%	59%	54%	62%	62%

Traits Observed: GL,200WT,400WT,SC,Scan(EMA,Rib,Rump,IMF),DOC

DOCILITY ST★R RATING



Scrotal Circumference: 37cm



188

Age: 16.5 months

Purchaser..... \$.....

Top 20% Top 50%



Lot 16 BLACK ANGUS NATIONWIDE U10^{SV} Ident: SJQ23U10

Born: 31/3/2023 **Genetic Status:** AMFU,CAFU,DDFU,NHFU **Mating Type:** AI **Registration Level:** HBR

G A R INGENUITY#
H P C A INTENSITY#
G A R PREDESTINED 287L#
MATAURI REALITY 839#
KAROO KNOCKOUT K176^{SV}
KAROO JEDDA H213#

SIRE: NOR432 RENNYLEA NATIONWIDE N432^{PV} **DAM: SJQ33 BLACK ANGUS WHISTLING BIRD Q33#**
TE MANIA BERKLEY B1^{PV}
RENNYLEA H367^{SV}
RENNYLEA F228#
K C F BENNETT PERFORMER#
BLACK ANGUS WHISTLING BIRD M5#
BLACK ANGUS WHISTLING BIRD J43#

August 2024 TransTasman Angus Cattle Evaluation

TACE	Calving Ease Direct	Calving Ease Daughters	Gestation Length (days)	Birth Weight (kg)	200 Day Weight (kg)	400 Day Weight (kg)	600 Day Weight (kg)	MCW (kg)	Milk (kg)	Scrotal Size (cm)	CWT (kg)	EMA (sq cm)	Rib Fat (mm)	Rump Fat (mm)	RBY %	IMF %	Docility
EBV	+5.9	+7.0	-10.3	+3.0	+60	+117	+149	+154	+15	-0.3	+90	+1.5	+1.1	+1.3	-0.9	+2.8	+19
ACC	65%	56%	83%	82%	83%	81%	81%	78%	74%	79%	70%	69%	69%	70%	62%	73%	76%

Traits Observed: GL,BWT,200WT,400WT,SC,Scan(EMA,Rib,Rump,IMF),DOC,Genomics

Nationwide U10 will impress the most critical of data critics. U10 offers Calving Ease, Low Birth Weight, Huge Growth and Positive Fat in spades! His gold plated maternal pedigree combines Karoo Knockout, Ardrossan Equator A241 and Black Angus Whistling Bird M5 who is due on her 8th natural calf in 2025.

DOCILITY ST★R RATING
★★★★

KPI
195

Scrotal Circumference: 34.5cm

Age: 17 months

Purchaser..... \$.....

Lot 17 BLACK ANGUS ROCKSTAR U50^{SV} Ident: SJQ23U50

Born: 7/4/2023 **Genetic Status:** AMFU,CAFU,DDFU,NHFU **Mating Type:** Natural **Registration Level:** HBR

G A R PROPHET^{SV}
BALDRIDGE BEAST MODE B074^{PV}
BALDRIDGE ISABEL Y69#
TE MANIA EMPEROR E343^{PV}
STORTH OAKS JACK J7^{SV}
STORTH OAKS G183#

SIRE: SJQR70 BLACK ANGUS BEAST MODE R70^{SV} **DAM: SJQR41 BLACK ANGUS DREAM R41#**
BLACK ANGUS BRAMBUIE F197^{SV}
BLACK ANGUS EMPRESS J257#
BLACK ANGUS EMPRESS F171#
ARDROSSAN EQUATOR A241^{PV}
BLACK ANGUS DREAM J79#
VERMONT DREAM D441#

August 2024 TransTasman Angus Cattle Evaluation

TACE	Calving Ease Direct	Calving Ease Daughters	Gestation Length (days)	Birth Weight (kg)	200 Day Weight (kg)	400 Day Weight (kg)	600 Day Weight (kg)	MCW (kg)	Milk (kg)	Scrotal Size (cm)	CWT (kg)	EMA (sq cm)	Rib Fat (mm)	Rump Fat (mm)	RBY %	IMF %	Docility
EBV	+2.2	+3.9	-5.3	+4.0	+57	+101	+123	+124	+14	+3.5	+73	+7.8	-1.2	-3.6	+1.0	+1.2	+26
ACC	64%	55%	82%	81%	82%	80%	81%	77%	73%	77%	69%	68%	68%	69%	60%	73%	75%

Traits Observed: BWT,200WT,400WT,SC,Scan(EMA,Rib,Rump,IMF),DOC,Genomics

Rockstar U50 is from a "Royal" Black Angus cow pedigree. A carbon copy pedigree to the \$110,000 record priced yearling son of Black Angus Dream P13. U50's sire, Black Angus Beast Mode R70 was retained for his elite foot structure, powerful phenotype and superb docility. 41cm Scrotal. 4.5 Docility Star Rating. 197 KPI.

DOCILITY ST★R RATING
★★★★☆

KPI
197

Scrotal Circumference: 41cm

Age: 17 months

Purchaser..... \$.....

Lot 18 BLACK ANGUS MAVERICK U79^{SV} Ident: SJQ23U79

Born: 25/4/2023 **Genetic Status:** AMFU,CAFU,DDF,NHFU **Mating Type:** Natural **Registration Level:** HBR

BOOROOMOOKA UNDERTAKEN Y145^{PV}
RENNYLEA EDMUND E11^{PV}
LAWSONS HENRY VIII Y5^{SV}
BLACK ANGUS COMPLEMENT L51^{SV}
BLACK ANGUS WATTLE STREET Q127^{SV}
BLACK ANGUS MST K53#

SIRE: SYAM07 STONEY POINT MOMENTUM M07^{PV} **DAM: SJQ21S107 BLACK ANGUS WHISTLING BIRD S107#**
WMR TIMELESS 458#
STONEY POINT YANKEE QUEEN K32^{PV}
STONEY POINT YANKEE QUEEN F153^{PV}
STORTH OAKS JACK J7^{SV}
BLACK ANGUS WHISTLING BIRD P5^{SV}
BLACK ANGUS WHISTLING BIRD M283#

August 2024 TransTasman Angus Cattle Evaluation

TACE	Calving Ease Direct	Calving Ease Daughters	Gestation Length (days)	Birth Weight (kg)	200 Day Weight (kg)	400 Day Weight (kg)	600 Day Weight (kg)	MCW (kg)	Milk (kg)	Scrotal Size (cm)	CWT (kg)	EMA (sq cm)	Rib Fat (mm)	Rump Fat (mm)	RBY %	IMF %	Docility
EBV	-7.1	-4.2	-1.4	+6.5	+62	+102	+143	+118	+19	+5.7	+75	+5.5	+1.0	+1.3	-0.1	+2.6	+26
ACC	62%	53%	81%	80%	81%	79%	80%	76%	72%	77%	68%	67%	67%	68%	59%	72%	75%

Traits Observed: BWT,200WT,400WT,SC,Scan(EMA,Rib,Rump,IMF),DOC,Genomics

Maverick U79 is the first of the M07 sons in this sale. Heifer's first calf. You definitely wont miss this fellow for his sheer power and robustness. #8 KPI bull in the sale. His sire, M07 was recruited as a proven natural joining sire for his blend of Calving Ease, High EMA, High Positive Fat and Super Sound Feet.

DOCILITY ST★R RATING
★★★★

KPI
200

Scrotal Circumference: 42cm

Age: 16.5 months

Purchaser..... \$.....

Top 20% Top 50%



GLATZ'S BLACK ANGUS



PROPER BEEF BULLS

SAVE THE DATE

BULL INSPECTION AFTERNOON

MONDAY 2ND SEPTEMBER 2024

- 1:00PM - 4:00PM AEST
 - ON PROPERTY AT "COROONA",
299 CAROONA LANE, BRANXHOLME VIC 3302
-

SPRING CATTLEMAN'S BULL SALE

MONDAY 9TH SEPTEMBER 2024

- **11:00AM AEST**
- **ON PROPERTY AT "COROONA",
299 CAROONA LANE, BRANXHOLME VIC 3302**
- **Featuring outstanding sons of
ELLINGSON RANGELAND, KAROO MAIN EVENT,
BLACK ANGUS GEDDES R605,
BLACK ANGUS WATTLE STREET Q127**

CONTACT

BEN & SAMANTHA GLATZ

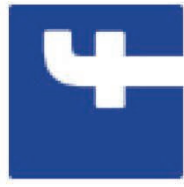
Mobile: 0407 712 455

Email: glatzblackangus@gmail.com

glatzblackangus.com



AuctionsPlus™





Lot 19 BLACK ANGUS RANGELAND U3# Ident: SJQ23U3

Born: 30/3/2023 **Genetic Status:** AMFU,CAFU,DDFU,NHFU **Mating Type:** AI **Registration Level:** HBR
 BASIN RAINMAKER 2704# MILLAH MURRAH KLOONEY K42#PV
 BASIN RAINMAKER 4404#PV MANDAYEN CLOONEY P555#SV
 BASIN JOY 1036# FORRES ROYAL-LINE B28#PV
SIRE: USA19590500 ELLINGSON RANGELAND# **DAM: SJQ21S74 BLACK ANGUS MELISSA S74#**
 CTS REMEDY 1T01# WILLOW FIELDS HANS H37#PV
 EA EMBLYNETTE 7009# BLACK ANGUS MELISSA P27#
 EA EMBLYNETTE 5241# BLACK ANGUS MELISSA M9#

August 2024 TransTasman Angus Cattle Evaluation																	
TACE	Calving Ease Direct	Calving Ease Daughters	Gestation Length (days)	Bith Weight (kg)	200 Day Weight (kg)	400 Day Weight (kg)	600 Day Weight (kg)	MCW (kg)	Milk (kg)	Scrotal Size (cm)	CWT (kg)	EMA (sq cm)	Rib Fat (mm)	Rump Fat (mm)	RBV %	IMF %	Docility
EBV	+5.1	+4.9	-5.7	+5.2	+58	+99	+125	+112	+19	+2.1	+78	+6.0	-0.2	-2.4	+1.2	+0.8	+25
ACC	54%	42%	67%	67%	69%	67%	67%	65%	58%	63%	58%	57%	59%	58%	52%	61%	62%

Traits Observed: BWT,200WT,400WT,SC,Scan(EMA,Rib,Rump,IMF),DOC

DOCILITY ST*AR RATING



195

Scrotal Circumference: 41cm

Age: 17 months

Purchaser..... \$.....

Lot 20 BLACK ANGUS JONAH LOMU U88# Ident: SJQ23U88

Born: 7/5/2023 **Genetic Status:** AMFU,CAFU,DDFU,NHFU **Mating Type:** Natural **Registration Level:** HBR
 TE MANIA EMPEROR E343#PV EF COMMANDO 1366#PV
 STORTH OAKS JACK J7#SV BALDRIDGE 38 SPECIAL#PV
 STORTH OAKS G183# BALDRIDGE ISABEL Y69#
SIRE: SJQP229 BLACK ANGUS JONAH LOMU P229# **DAM: SJQR57 BLACK ANGUS WHISTLING BIRD R57#**
 EF COMPLEMENT 8088#PV ARDROSSAN MATERNAL POWER A60#PV
 BLACK ANGUS DREAM L47# BLACK ANGUS WHISTLING BIRD G7#
 BLACK ANGUS DREAM J79# BLACK ANGUS WHISTLING BIRD E27#

August 2024 TransTasman Angus Cattle Evaluation																	
TACE	Calving Ease Direct	Calving Ease Daughters	Gestation Length (days)	Bith Weight (kg)	200 Day Weight (kg)	400 Day Weight (kg)	600 Day Weight (kg)	MCW (kg)	Milk (kg)	Scrotal Size (cm)	CWT (kg)	EMA (sq cm)	Rib Fat (mm)	Rump Fat (mm)	RBV %	IMF %	Docility
EBV	+6.4	+5.8	-4.5	+3.1	+51	+90	+117	+91	+15	+2.8	+63	+6.9	+0.8	+0.1	+0.3	+1.8	+27
ACC	57%	48%	68%	72%	69%	70%	68%	66%	60%	73%	60%	59%	61%	61%	55%	63%	63%

Traits Observed: BWT,200WT,400WT,SC,Scan(EMA,Rib,Rump,IMF),DOC

DOCILITY ST*AR RATING



195

Scrotal Circumference: 39.5cm

Age: 16 months

Purchaser..... \$.....

Lot 21 BLACK ANGUS DUSTY MARTIN U90# Ident: SJQ23U90

Born: 8/5/2023 **Genetic Status:** AMFU,CAFU,DDFU,NHFU **Mating Type:** Natural **Registration Level:** APR
 G A R PROPHET#SV STORTH OAKS JACK J7#SV
 CLUNES CROSSING DUSTY M13#PV BLACK ANGUS JONAH LOMU P229#SV
 CLUNES CROSSING GLORIOUS G1#SV BLACK ANGUS DREAM L47#
SIRE: SJQR608 BLACK ANGUS DUSTY MARTIN R608# **DAM: SJQ21S111 BLACK ANGUS WILCOOLA S111#**
 G A R ANTICIPATION# VISION UNANIMOUS 1418#PV
 YOTHAMURRA L81#SV BLACK ANGUS WILCOOLA Q25#
 LAWSONS DINKY DI E1121#SV BLACK ANGUS WILCOOLA K229#

August 2024 TransTasman Angus Cattle Evaluation																	
TACE	Calving Ease Direct	Calving Ease Daughters	Gestation Length (days)	Bith Weight (kg)	200 Day Weight (kg)	400 Day Weight (kg)	600 Day Weight (kg)	MCW (kg)	Milk (kg)	Scrotal Size (cm)	CWT (kg)	EMA (sq cm)	Rib Fat (mm)	Rump Fat (mm)	RBV %	IMF %	Docility
EBV	+4.2	+5.7	-7.2	+3.5	+64	+108	+129	+101	+13	+2.4	+75	+8.6	-1.0	-2.0	+0.3	+2.9	+20
ACC	53%	45%	64%	71%	67%	68%	66%	64%	57%	71%	57%	56%	58%	58%	51%	61%	59%

Traits Observed: BWT,200WT,400WT,SC,Scan(EMA,Rib,Rump,IMF),DOC

DOCILITY ST*AR RATING



205

Scrotal Circumference: 37cm

Age: 16 months

Purchaser..... \$.....

Top 20% Top 50%

Dusty Martin U90 is a mid May drop, heifer's first calf and suitable for heifer joining. #5 ranked KPI in the sale. Top 6-13% of the Angus breed for Gestation Length, 200 Growth, 400 Growth, ABI and AB-L. Inside the top 50% of the breed for 16 traits. Dusty Martin R608 has not retired - he is going strong.



Lot 22 BLACK ANGUS RANGELAND U20# **Ident: SJQ23U20**
Born: 2/4/2023 **Genetic Status:** AMFU,CAFU,DD25%,NHFU **Mating Type:** AI **Registration Level:** HBR
 EF COMPLEMENT 8088^{PV} STORTH OAKS JACK J7^{SV}
 EF COMMANDO 1366^{PV} BLACK ANGUS JONAH LOMU P229^{SV}
 RIVERBEND YOUNG LUCY W1470# BLACK ANGUS DREAM L47#
SIRE: USA18229487 BALDRIDGE 38 SPECIAL^{PV} **DAM: SJQ21S142 BLACK ANGUS BUGSY S142#**
 STYLES UPGRADE J59# GILMANDYKE JERRAWANGALA J0340^{SV}
 BALDRIDGE ISABEL Y69# BLACK ANGUS A89 BUGSY M167#
 BALDRIDGE ISABEL T935# BLACK ANGUS W42 BUGSY A89#

August 2024 TransTasman Angus Cattle Evaluation																	
TACE	Calving Ease Direct	Calving Ease Daughters	Gestation Length (days)	Birth Weight (kg)	200 Day Weight (kg)	400 Day Weight (kg)	600 Day Weight (kg)	MCW (kg)	Milk (kg)	Scrotal Size (cm)	CWT (kg)	EMA (sq cm)	Rib Fat (mm)	Rump Fat (mm)	RBY %	IMF %	Docility
EBV	+5.8	+4.0	-5.3	+3.5	+58	+97	+135	+119	+17	+2.1	+73	+5.8	-1.1	-3.2	+0.5	+1.9	+20
ACC	62%	53%	82%	68%	70%	70%	69%	68%	63%	74%	62%	61%	63%	62%	57%	64%	65%

Traits Observed: GL,200WT,400WT,SC,Scan(EMA,Rib,Rump,IMF),DOC

Rangeland U20 is a heifer's first calf suitable for heifer joining. An impressive balance of data with 14 traits within the Top 50% of the Angus breed. His grand dam will deliver her 8th natural calf in 2025. His great grand dam, Buggy A89 was a true gem having produced 13 natural calves. 4.5 Star Docility Rating.

DOCILITY ST★R RATING
 ★ ★ ★ ★ ★
Scrotal Circumference: 36.5cm **Age:** 17 months



Purchaser..... \$.....

Lot 23 BLACK ANGUS BLOCKBUSTER U55# **Ident: SJQ23U55**
Born: 8/4/2023 **Genetic Status:** AMFU,CAFU,DDFU,NHFU **Mating Type:** AI **Registration Level:** APR
 MATAURI REALITY 839# KM BROKEN BOW 002^{PV}
 MILWILLAH REALITY K12^{PV} VARILEK GEDDES 7068^{PV}
 MILWILLAH BARUNAH H8^{SV} VARILEK GOLDIE 5051 506#
SIRE: NENM367 KAROO MAIN EVENT M367^{SV} **DAM: SJQ21S69 BLACK ANGUS MONA S69#**
 ARDROSSAN EQUATOR A241^{PV} WITHERSWOOD PERFORMER E49^{SV}
 KAROO DORIS G34# BLACK ANGUS MONA K67#
 KAROO DORIS Y137^{SV} BLACK ANGUS MONA F54#

August 2024 TransTasman Angus Cattle Evaluation																	
TACE	Calving Ease Direct	Calving Ease Daughters	Gestation Length (days)	Birth Weight (kg)	200 Day Weight (kg)	400 Day Weight (kg)	600 Day Weight (kg)	MCW (kg)	Milk (kg)	Scrotal Size (cm)	CWT (kg)	EMA (sq cm)	Rib Fat (mm)	Rump Fat (mm)	RBY %	IMF %	Docility
EBV	+0.6	+0.5	-2.4	+3.8	+42	+84	+106	+93	+18	+1.9	+58	+3.0	+0.6	+2.3	+0.0	+1.9	+22
ACC	57%	46%	82%	72%	69%	70%	68%	65%	61%	74%	59%	58%	60%	60%	54%	61%	63%

Traits Observed: GL,BWT,200WT,400WT,SC,Scan(EMA,Rib,Rump,IMF),DOC

Back on with the tremendous run of Main Event sons. Blockbuster U55 is a heifer's first calf and suitable for heifer joining. Low Birth Weight. Positive Fat. Docility. 4.5 Star Docility Rating.

DOCILITY ST★R RATING
 ★ ★ ★ ★ ★
Scrotal Circumference: 36cm **Age:** 17 months



Purchaser..... \$.....

Lot 24 BLACK ANGUS 38 SPECIAL U56# **Ident: SJQ23U56**
Born: 9/4/2023 **Genetic Status:** AMFU,CAFU,DDFU,NHFU **Mating Type:** AI **Registration Level:** HBR
 EF COMPLEMENT 8088^{PV} STORTH OAKS JACK J7^{SV}
 EF COMMANDO 1366^{PV} BLACK ANGUS JONAH LOMU P229^{SV}
 RIVERBEND YOUNG LUCY W1470# BLACK ANGUS DREAM L47#
SIRE: USA18229487 BALDRIDGE 38 SPECIAL^{PV} **DAM: SJQ21S132 BLACK ANGUS BUGSY S132#**
 STYLES UPGRADE J59# BLACK ANGUS EQUATOR A241 H11^{SV}
 BALDRIDGE ISABEL Y69# BLACK ANGUS BUGSY L15#
 BALDRIDGE ISABEL T935# BLACK ANGUS BUGSY E113#

August 2024 TransTasman Angus Cattle Evaluation																	
TACE	Calving Ease Direct	Calving Ease Daughters	Gestation Length (days)	Birth Weight (kg)	200 Day Weight (kg)	400 Day Weight (kg)	600 Day Weight (kg)	MCW (kg)	Milk (kg)	Scrotal Size (cm)	CWT (kg)	EMA (sq cm)	Rib Fat (mm)	Rump Fat (mm)	RBY %	IMF %	Docility
EBV	+5.5	+4.6	-4.3	+2.9	+57	+99	+126	+99	+17	+3.9	+69	+3.9	+0.1	-1.1	-0.1	+2.2	+29
ACC	62%	53%	82%	73%	70%	71%	70%	68%	64%	73%	62%	61%	63%	63%	57%	64%	65%

Traits Observed: GL,BWT,200WT,400WT,SC,Scan(EMA,Rib,Rump,IMF),DOC

This fellow is the #2 ranked KPI bull on offer. The Glatz's Black Angus breeding program is all about balance. 38 Special U56 is exactly that. A heifer's first calf and suitable for heifer joining. The last 38 Special in this sale who can boast a double cross of the herd building legendary sire in Ardrossan Equator A241.

DOCILITY ST★R RATING
 ★ ★ ★ ★ ★
Scrotal Circumference: 41cm **Age:** 17 months



Purchaser..... \$.....

Top 20% Top 50%



Lot 25 BLACK ANGUS ROCKSTAR U80# Ident: SJQ23U80

Born: 25/4/2023 **Genetic Status:** AMFU,CAFU,DDFU,NHFU **Mating Type:** Natural **Registration Level:** HBR

G A R PROPHET^{SV} EF COMPLEMENT 8088^{PV}
 BALDRIDGE BEAST MODE B074^{PV} BLACK ANGUS COMPLEMENT L51^{SV}
 BALDRIDGE ISABEL Y69[#] BLACK ANGUS EXPO J119[#]

SIRE: SJQR70 BLACK ANGUS BEAST MODE R70^{SV} **DAM: SJQ21S93 BLACK ANGUS DREAM S93[#]**
 BLACK ANGUS BRAMBUIE F197^{SV} PINORA LEVI L73[#]
 BLACK ANGUS EMPRESS J257[#] BLACK ANGUS DREAM P323[#]
 BLACK ANGUS EMPRESS F171[#] BLACK ANGUS DREAM K207[#]

August 2024 TransTasman Angus Cattle Evaluation																	
TACE	Calving Ease Direct	Calving Ease Daughters	Gestation Length (days)	Birth Weight (kg)	200 Day Weight (kg)	400 Day Weight (kg)	600 Day Weight (kg)	MCW (kg)	Milk (kg)	Scrotal Size (cm)	CWT (kg)	EMA (sq cm)	Rib Fat (mm)	Rump Fat (mm)	RBY %	IMF %	Docility
EBV	+3.9	+4.8	-3.8	+1.9	+51	+89	+108	+88	+16	+2.7	+61	+6.8	+0.0	-0.6	+0.7	+1.5	+29
ACC	54%	46%	63%	70%	67%	67%	65%	63%	57%	71%	55%	54%	57%	57%	50%	59%	60%

Traits Observed: BWT,200WT,400WT,SC,Scan(EMA,Rib,Rump,IMF),DOC

DOCILITY ST★R RATING



KPI
172

Scrotal Circumference: 38cm

Age: 16.5 months

Purchaser..... \$.....

Lot 26 BLACK ANGUS HARRY TAYLOR U58# Ident: SJQ23U58

Born: 9/4/2023 **Genetic Status:** AMFU,CAFU,DDFU,NHFU **Mating Type:** AI **Registration Level:** HBR

KM BROKEN BOW 002^{PV} BLACK ANGUS COMPLEMENT L51^{SV}
 VARILEK GEDDES 7068^{PV} BLACK ANGUS WATTLE STREET Q127^{SV}
 VARILEK GOLDIE 5051 506[#] BLACK ANGUS MST K53[#]

SIRE: SJQR605 BLACK ANGUS GEDDES R605^{PV} **DAM: SJQ21S92 BLACK ANGUS WHISTLING BIRD S92[#]**
 LAWSONS INCREDIBLE H803^{PV} WILLOW FIELDS HANS H37^{PV}
 LAWSONS INCREDIBLE L882^E BLACK ANGUS WHISTLING BIRD P81[#]
 LAWSONS REGENT J1425^{SV} BLACK ANGUS WHISTLING BIRD M1[#]

August 2024 TransTasman Angus Cattle Evaluation																	
TACE	Calving Ease Direct	Calving Ease Daughters	Gestation Length (days)	Birth Weight (kg)	200 Day Weight (kg)	400 Day Weight (kg)	600 Day Weight (kg)	MCW (kg)	Milk (kg)	Scrotal Size (cm)	CWT (kg)	EMA (sq cm)	Rib Fat (mm)	Rump Fat (mm)	RBY %	IMF %	Docility
EBV	+3.4	+2.0	-2.3	+3.1	+48	+91	+122	+107	+23	+2.1	+71	+2.6	-1.9	-1.2	+0.2	+2.2	+26
ACC	53%	43%	81%	71%	67%	67%	65%	63%	56%	71%	55%	54%	56%	56%	49%	59%	58%

Traits Observed: GL,BWT,200WT,400WT,SC,Scan(EMA,Rib,Rump,IMF),DOC

DOCILITY ST★R RATING



KPI
150

Scrotal Circumference: 36.5cm

Age: 17 months

Purchaser..... \$.....

Lot 27 BLACK ANGUS MAKAHU U116# Ident: SJQ23U116

Born: 21/6/2023 **Genetic Status:** AMFU,CAFU,DDFU,NHFU **Mating Type:** Natural **Registration Level:** HBR

SCHURRTOP REALITY X723[#] SITZ TOP GAME 561X[#]
 MATAURI REALITY 839[#] JMB TRACTION 292^{PV}
 MATAURI 06663[#] JMB EMULOTA 013[#]

SIRE: QLLM602 GLENOCH-JK MAKAHU M602^{SV} **DAM: SYAQ035 STONEY POINT RIHANNA Q035[#]**
 GLENOCH HINMAN H221^{SV} MURDEDUKE KICKING K428^{PV}
 GLENOCH-JK ANN K615^{SV} STONEY POINT RIHANNA N155^{SV}
 GLENOCH-JK ANN F606^{SV} COORONG RIHANNA G12[#]

August 2024 TransTasman Angus Cattle Evaluation																	
TACE	Calving Ease Direct	Calving Ease Daughters	Gestation Length (days)	Birth Weight (kg)	200 Day Weight (kg)	400 Day Weight (kg)	600 Day Weight (kg)	MCW (kg)	Milk (kg)	Scrotal Size (cm)	CWT (kg)	EMA (sq cm)	Rib Fat (mm)	Rump Fat (mm)	RBY %	IMF %	Docility
EBV	+1.9	+1.1	-5.4	+4.9	+58	+103	+134	+127	+23	+3.1	+73	+8.2	-1.4	-4.0	+0.7	+1.6	+31
ACC	63%	55%	71%	72%	71%	70%	70%	69%	65%	69%	63%	63%	64%	64%	58%	66%	67%

Traits Observed: BWT,200WT,400WT,SC,Scan(EMA,Rib,Rump,IMF),DOC

DOCILITY ST★R RATING



KPI
210

Scrotal Circumference: 36.5cm

Age: 14.5 months

Purchaser..... \$.....

Top 20% Top 50%

#3 ranked KPI bull in the sale. Late June drop! The only son of the great Makahu in this sale. Makahu U116 is ranked in the Top 12-21% of the Angus breed for 200 Growth, 400 Growth, 600 Growth, Milk, Scrotal Size and Docility. Plus 8.2 for EMA.



Lot 28 BLACK ANGUS WATTLE STREET U109# Ident: SJQ23U109

Born: 11/6/2023 **Genetic Status:** AMFU,CAFU,DDFU,NHFU **Mating Type:** Natural **Registration Level:** HBR
 EF COMPLEMENT 8088^{PV} WATTLETOP SITZ 458N E111^{SV}
 BLACK ANGUS COMPLEMENT L51^{SV} BOORAGUL WT458N K11^{SV}
 BLACK ANGUS EXPO J119# BOORAGUL GLAZE G140#
SIRE: SJQQ127 BLACK ANGUS WATTLE STREET Q127^{SV} **DAM: SJQQ58 BLACK ANGUS MONA Q58#**
 WITHERSWOOD PERFORMER E49^{SV} WITHERSWOOD PERFORMER E49^{SV}
 BLACK ANGUS MST K53# BLACK ANGUS MONA N45#
 BLACK ANGUS CLEOPATRA D25# BLACK ANGUS MONA K62#

August 2024 TransTasman Angus Cattle Evaluation																	
TACE	Calving Ease Direct	Calving Ease Daughters	Gestation Length (days)	Birth Weight (kg)	200 Day Weight (kg)	400 Day Weight (kg)	600 Day Weight (kg)	MCW (kg)	Milk (kg)	Scrotal Size (cm)	CWT (kg)	EMA (sq cm)	Rib Fat (mm)	Rump Fat (mm)	RBY %	IMF %	Docility
EBV	-3.9	+0.0	-4.0	+4.8	+60	+103	+134	+108	+20	+3.6	+87	+8.2	-0.4	+0.0	+0.6	+0.8	+36
ACC	54%	44%	65%	71%	68%	67%	68%	65%	59%	67%	58%	57%	60%	60%	53%	61%	62%

Traits Observed: BWT,200WT,400WT,SC,Scan(EMA,Rib,Rump,IMF),DOC

Mid June drop Wattle Street Q127 son ranked #4 in the sale for KPI. Wattle Street U109 ranks in the Top 6% of the Angus breed for Docility. Top 8% for Carcase Weight. Top 10% for Scrotal Size. Top 14-20% for 200 Growth, 400 Growth and 600 Growth. 4.5 Star Docility Rating.

DOCILITY ST★R RATING
 ★ ★ ★ ★ ★
Scrotal Circumference: 39cm **Age:** 15 months

Purchaser..... \$.....

Lot 29 BLACK ANGUS DUSTY MARTIN U86# Ident: SJQ23U86

Born: 6/5/2023 **Genetic Status:** AMFU,CAFU,DDFU,NHFU **Mating Type:** Natural **Registration Level:** HBR
 G A R PROPHET^{SV} AYRVALE BARTEL E7^{PV}
 CLUNES CROSSING DUSTY M13^{PV} BRONMAR BAR MARTEL M1^{SV}
 CLUNES CROSSING GLORIOUS G1^{SV} BRONMAR EMP KRISTY K5^{SV}
SIRE: SJQR608 BLACK ANGUS DUSTY MARTIN R608^{PV} **DAM: SJQR96 BLACK ANGUS BUGSY R96#**
 G A R ANTICIPATION# PINORA LEVI L73#
 YOOHAMURRA L81^{SV} BLACK ANGUS BUGSY P313#
 LAWSONS DINKY DI E1121^{SV} BLACK ANGUS BUGSY H23#

August 2024 TransTasman Angus Cattle Evaluation																	
TACE	Calving Ease Direct	Calving Ease Daughters	Gestation Length (days)	Birth Weight (kg)	200 Day Weight (kg)	400 Day Weight (kg)	600 Day Weight (kg)	MCW (kg)	Milk (kg)	Scrotal Size (cm)	CWT (kg)	EMA (sq cm)	Rib Fat (mm)	Rump Fat (mm)	RBY %	IMF %	Docility
EBV	-0.1	+4.8	-6.0	+4.6	+61	+102	+123	+107	+11	+3.0	+68	+9.3	-1.9	-2.6	+1.0	+2.8	+18
ACC	52%	45%	64%	71%	67%	67%	65%	63%	57%	70%	56%	55%	57%	57%	50%	60%	59%

Traits Observed: BWT,200WT,400WT,SC,Scan(EMA,Rib,Rump,IMF),DOC

Dusty Martin U86 sits within the Top 50% of the Angus breed over an impressive 14 traits. His grand dam has produced headline sires in recent SA sales. A \$28,000 son sold in 2023 to Ponderosa Angus Stud, WA. Her next son sold to McBride Operations bull breeding unit for \$15,000 in 2024.

DOCILITY ST★R RATING
 ★ ★ ★ ★ ★
Scrotal Circumference: 39cm **Age:** 16 months

Purchaser..... \$.....

Lot 30 BLACK ANGUS ROCKSTAR U73# Ident: SJQ23U73

Born: 21/4/2023 **Genetic Status:** AMFU,CAFU,DDFU,NHFU **Mating Type:** Natural **Registration Level:** APR
 G A R PROPHET^{SV} MILLAH MURRAH KLOONEY K42^{PV}
 BALDRIDGE BEAST MODE B074^{PV} MANDAYEN CLOONEY P555^{SV}
 BALDRIDGE ISABEL Y69# FORRES ROYAL-LINE B28^{PV}
SIRE: SJQR70 BLACK ANGUS BEAST MODE R70^{SV} **DAM: SJQ21S85 BLACK ANGUS SCOTCH S85#**
 BLACK ANGUS BRAMBUIE F197^{SV} KAROO KNOCKOUT K176^{SV}
 BLACK ANGUS EMPRESS J257# BLACK ANGUS SCOTCH Q80#
 BLACK ANGUS EMPRESS F171# BLACK ANGUS SCOTCH J271#

August 2024 TransTasman Angus Cattle Evaluation																	
TACE	Calving Ease Direct	Calving Ease Daughters	Gestation Length (days)	Birth Weight (kg)	200 Day Weight (kg)	400 Day Weight (kg)	600 Day Weight (kg)	MCW (kg)	Milk (kg)	Scrotal Size (cm)	CWT (kg)	EMA (sq cm)	Rib Fat (mm)	Rump Fat (mm)	RBY %	IMF %	Docility
EBV	+1.5	+2.2	-4.7	+4.5	+56	+91	+115	+111	+12	+2.9	+64	+3.8	+0.1	-0.9	+0.6	+1.2	+30
ACC	54%	46%	63%	71%	66%	67%	65%	63%	57%	70%	55%	54%	56%	56%	50%	59%	59%

Traits Observed: BWT,200WT,400WT,SC,Scan(EMA,Rib,Rump,IMF),DOC

Rockstar U73 has achieved the 5 Star Docility Rating title. That's no mean feat within a herd that has such a high standing within the industry for breeding docile Angus cattle. He is a heifer's first calf and is suitable for heifer joining. His great grand dam, J271 delivered triplet heifers in 2022. All born unassisted, all raised by her, all pregnant as yearlings and all happily raising their own progeny now. J271 will post her 14th natural calf in 2025.

DOCILITY ST★R RATING
 ★ ★ ★ ★ ★
Scrotal Circumference: 37.5cm **Age:** 16.5 months

Purchaser..... \$.....

Top 20% Top 50%



Lot 31 BLACK ANGUS ROCKSTAR U83# Ident: SJQ23U83

Born: 28/4/2023 **Genetic Status:** AMFU,CAFU,DDFU,NHFU **Mating Type:** Natural **Registration Level:** APR

G A R PROPHET^{SV} STORTH OAKS JACK J7^{SV}
 BALDRIDGE BEAST MODE B074^{PV} BLACK ANGUS JONAH LOMU P229^{SV}
 BALDRIDGE ISABEL Y69[#] BLACK ANGUS DREAM L47[#]

SIRE: SJQR70 BLACK ANGUS BEAST MODE R70^{SV} **DAM: SJQ21S136 BLACK ANGUS JENNIFER S136[#]**
 BLACK ANGUS BRAMBUIE F197^{SV} BOORAGUL WT458N K11^{SV}
 BLACK ANGUS EMPRESS J257[#] BLACK ANGUS JENNIFER P283[#]
 BLACK ANGUS EMPRESS F171[#] BLACK ANGUS JENNIFER K247[#]

August 2024 TransTasman Angus Cattle Evaluation

TACE	Calving Ease Direct	Calving Ease Daughters	Gestation Length (days)	Birth Weight (kg)	200 Day Weight (kg)	400 Day Weight (kg)	600 Day Weight (kg)	MCW (kg)	Milk (kg)	Scrotal Size (cm)	CWT (kg)	EMA (sq cm)	Rib Fat (mm)	Rump Fat (mm)	RBY %	IMF %	Docility
EBV	+1.8	+1.5	-3.0	+4.0	+52	+90	+110	+93	+13	+3.7	+60	+6.8	-1.6	-2.8	+0.9	+1.4	+35
ACC	54%	45%	63%	70%	66%	67%	65%	63%	57%	71%	55%	55%	57%	57%	51%	59%	59%

Traits Observed: BWT,200WT,400WT,SC,Scan(EMA,Rib,Rump,IMF),DOC

DOCILITY ST★R RATING



KPI
167

Scrotal Circumference: 40cm

Age: 16.5 months

Rockstar U83 is a late April drop. A heifer's first calf and suitable for heifer joining. He offers elite Docility being ranked in the Top 8% of the Angus breed. Top 9% for Scrotal Size. Top 24% for Retail Beef Yield. 40cm Scrotal.

Purchaser..... \$.....

Lot 32 BLACK ANGUS MAVERICK U87# Ident: SJQ23U87

Born: 6/5/2023 **Genetic Status:** AMFU,CAFU,DDFU,NHFU **Mating Type:** Natural **Registration Level:** HBR

BOOROOMOOKA UNDERTAKEN Y145^{PV} BALDRIDGE BEAST MODE B074^{PV}
 RENNYLEA EDMUND E11^{PV} DIAMOND ONE BEAST MODE Q48^{SV}
 LAWSONS HENRY VIII Y5^{SV} DIAMOND TREE BARTEL L60[#]

SIRE: SYAM07 STONEY POINT MOMENTUM M07^{PV} **DAM: SJQ21S70 BLACK ANGUS BUGSY S70[#]**
 WMR TIMELESS 458[#] PINORA LEVI L73[#]
 STONEY POINT YANKEE QUEEN K32^{PV} BLACK ANGUS BUGSY Q130[#]
 STONEY POINT YANKEE QUEEN F153^{PV} BLACK ANGUS BUGSY H23[#]

August 2024 TransTasman Angus Cattle Evaluation

TACE	Calving Ease Direct	Calving Ease Daughters	Gestation Length (days)	Birth Weight (kg)	200 Day Weight (kg)	400 Day Weight (kg)	600 Day Weight (kg)	MCW (kg)	Milk (kg)	Scrotal Size (cm)	CWT (kg)	EMA (sq cm)	Rib Fat (mm)	Rump Fat (mm)	RBY %	IMF %	Docility
EBV	-0.6	+0.3	-4.0	+4.6	+53	+81	+110	+84	+15	+2.7	+62	+9.1	+2.5	+2.6	+1.0	+1.2	+18
ACC	55%	48%	65%	72%	68%	69%	66%	64%	59%	72%	57%	57%	58%	58%	52%	61%	62%

Traits Observed: BWT,200WT,400WT,SC,Scan(EMA,Rib,Rump,IMF),DOC

DOCILITY ST★R RATING



KPI
142

Scrotal Circumference: 37.5cm

Age: 16 months

May drop. Maverick U87 is a heifer's first calf that combines solid Growth with appealing moderation on mature cow weight. He ranks within the Top 9% of the Angus breed for Positive Rib Fat. Top 11% for Positive Rump Fat. Top 14% for Days to Calving. These are some of the reasons why his sire was recruited at a ripe old age as a natural service sire at Black Angus.

Purchaser..... \$.....

Lot 33 BLACK ANGUS MAVERICK U113# Ident: SJQ23U113

Born: 17/6/2023 **Genetic Status:** AMFU,CAFU,DDFU,NHFU **Mating Type:** Natural **Registration Level:** HBR

BOOROOMOOKA UNDERTAKEN Y145^{PV} STORTH OAKS JACK J7^{SV}
 RENNYLEA EDMUND E11^{PV} BLACK ANGUS JONAH LOMU P229^{SV}
 LAWSONS HENRY VIII Y5^{SV} BLACK ANGUS DREAM L47[#]

SIRE: SYAM07 STONEY POINT MOMENTUM M07^{PV} **DAM: SJQ21S82 BLACK ANGUS MELISSA S82[#]**
 WMR TIMELESS 458[#] KAROO KNOCKOUT K176^{SV}
 STONEY POINT YANKEE QUEEN K32^{PV} BLACK ANGUS MELISSA P35[#]
 STONEY POINT YANKEE QUEEN F153^{PV} BLACK ANGUS MELISSA L61[#]

August 2024 TransTasman Angus Cattle Evaluation

TACE	Calving Ease Direct	Calving Ease Daughters	Gestation Length (days)	Birth Weight (kg)	200 Day Weight (kg)	400 Day Weight (kg)	600 Day Weight (kg)	MCW (kg)	Milk (kg)	Scrotal Size (cm)	CWT (kg)	EMA (sq cm)	Rib Fat (mm)	Rump Fat (mm)	RBY %	IMF %	Docility
EBV	+1.4	+1.0	-4.4	+5.2	+50	+89	+116	+96	+16	+2.6	+67	+6.6	+2.1	+2.1	+0.8	+0.7	+32
ACC	56%	48%	66%	71%	68%	67%	67%	65%	60%	69%	59%	58%	60%	60%	54%	62%	62%

Traits Observed: BWT,200WT,SC,Scan(EMA,Rib,Rump,IMF),DOC

DOCILITY ST★R RATING



KPI
178

Scrotal Circumference: 36cm

Age: 14.5 months

Late June drop - 2nd youngest bull in the sale. A carbon copy data spread to the previous lot with the bonus of Docility at Plus 32. Maverick U113 ranks in the Top 12% of the Angus breed for Positive Rib Fat. Top 15% for Positive Rump Fat. Top 16% for Days to Calving. 4.5 Star Docility Rating. Make them a pair.

Purchaser..... \$.....

Top 20% Top 50%



Lot 34	BLACK ANGUS LUMBERJACK U110[#]	Ident: SJQ23U110
Born: 11/6/2023	Genetic Status: AMFU,CAFU,DDFU,NHFU	Mating Type: Natural
	Registration Level: HBR	
	G A R PROPHET ^{SV}	MATAURI REALITY 839 [#]
	BALDRIDGE BEAST MODE B074 ^{PV}	GLENOCH-JK MAKAHU M602 ^{SV}
	BALDRIDGE ISABEL Y69 [#]	GLENOCH-JK ANN K615 ^{SV}
SIRE: WKGQ48 DIAMOND ONE BEAST MODE Q48^{SV}		DAM: SJQ21S99 BLACK ANGUS PANDORA S99[#]
AYRVALE BARTEL E7 ^{PV}		BLACK ANGUS COMPLEMENT L51 ^{SV}
DIAMOND TREE BARTEL L60 [#]		BLACK ANGUS PANDORA N209 [#]
DIAMOND TREE HOOVER DAM J88 [#]		BLACK ANGUS PANDORA L135 [#]

August 2024 TransTasman Angus Cattle Evaluation																	
TACE	Calving Ease Direct	Calving Ease Daughters	Gestation Length (days)	Birth Weight (kg)	200 Day Weight (kg)	400 Day Weight (kg)	600 Day Weight (kg)	MCW (kg)	Milk (kg)	Scrotal Size (cm)	CWT (kg)	EMA (sq cm)	Rib Fat (mm)	Rump Fat (mm)	RBY %	IMF %	Docility
EBV	-1.0	+4.2	-3.9	+4.4	+58	+89	+117	+106	+19	+2.8	+66	+4.4	-0.6	-2.4	+0.4	+3.1	+24
ACC	56%	47%	63%	71%	67%	66%	67%	64%	58%	68%	57%	56%	58%	58%	52%	60%	61%

Traits Observed: BWT,200WT,400WT,SC,Scan(EMA,Rib,Rump,IMF),DOC

Mid June drop - 3rd youngest bull in the sale. Lumberjack U110 is the first calf from a lovely Makahu daughter. His grand dam will deliver her 7th natural calf in 2025. He's over 3 for IMF and is super docile to be around. His sire, Q48 has been a reliable Calving Ease sire for us with sound structure. Much more muscularity than a typical Higher IMF sire.

DOCILITY STAR RATING



Scrotal Circumference: 37cm



141

Age: 15 months

Purchaser..... \$.....

"We sincerely thank our loyal clients, agents, friends and community for their continued support of Glatz's Black Angus."

Ben & Samantha Glatz



Attention Buyer

Animal details included in this catalogue, including but not limited to pedigree, DNA information, Estimated Breeding Values (EBVs) and Index values, are based on information provided by the breeder or owner of the animal. Whilst all reasonable care has been taken to ensure that the information provided in this catalogue was correct at the time of publication, Angus Australia will assume no responsibility for the accuracy or completeness of the information, nor for the outcome (including consequential loss) of any action taken based on this information.



BLACK ANGUS Dusty Martin R608

"Black Angus Dusty Martin R608 was retained from our 2020 drop. His combination of Physical Type and Structure matched with High EMA and IMF is rarely achieved. He has proven to be a good option for heifer matings and mature cows alike."



RENNYLEA Nationwide N432

"Rennyale Nationwide N432 was identified as a proven sire for breeding progeny that impress for performance, structure and phenotype."



Understanding Estimated Breeding Values (EBVs)

Estimated Breeding Values (EBVs) are predictions of an animal's genetic merit, based on available performance data on the individual and its relatives. EBVs are expressed in the units of measurement for each particular trait. They are shown as +ive or -ive differences from the breed base. As the breed base is set to a historical benchmark, the average EBVs of animals in each year drop has changed over time as a result of genetic change within the breed. The current breed averages are shown below. These averages provide a useful benchmark for comparing EBVs for animals.

AUGUST ANGUS BREEDPLAN

	Calving Ease		Birth		Growth				Fertility			Carcase					
	CEDir	CEDtrs	GL	BW	200	400	600	MCW	Milk	SS	CWT	EMA	RIB	P8	RBY	IMF	DOC
Brd Avg	+1.8	+2.7	-4.4	+4.0	+51	+92	+119	+102	+17	+2.2	+67	+6.4	+0.0	-0.3	+0.5	+2.3	+21

*Breed average represents the average EBV of all 2021 drop Angus and Angus influenced animals analysed in the Mid-December 2022 Trans Tasman Angus BREEDPLAN genetic evaluation.

CALVING EASE TRAITS

Calving Ease (DIR): estimate of genetic differences among animals in the ability of their calves from 2 year old heifers to be born unassisted. Higher, more +ive, Calving Ease (DIR) EBVs are more favourable.

Calving Ease (DTRS): estimates of genetic differences among animals in the ability of their 2 year old daughters to calve without assistance. Higher, more +ive, Calving Ease (DTRS) EBVs are more favourable.

Gestation Length: estimate of genetic differences among animals in the number of days from the date of conception until the calf birth date. Lower, or more -ive, Gestation Length EBVs are generally more favourable.

Birth Wt: estimate of genetic differences between animals in kg of calf birth weight. Calf birth weight is the biggest contributing factor causing calving difficulty in heifers. While low Birth Wt EBVs are favoured for calving ease they are also often associated with lower growth potential. Small, or moderate, Birth Wt EBVs are more favourable.

FERTILITY TRAITS

Days to Calving (DC): estimate of genetic differences among in female fertility, expressed as the number of days from the start of the joining period until subsequent calving. Females with shorter DC EBVs tend to commence cycling earlier after calving and conceive earlier in the joining period. They also tend to attain puberty at a younger age as heifers. Lower, or more -ive, Days to Calving EBVs are more favourable.

Scrotal Size: estimate of the genetic differences among animals in scrotal circumference at 400 days of age. Increased scrotal size is associated with increased semen production in bulls, and earlier age at puberty of bull and heifer progeny. Larger, or more +ive, Scrotal Size EBVs are more favourable.

GROWTH TRAITS

200-Day Wt: estimate of the genetic differences among animals in weight at 200 days of age. This is a measure of an animal's early growth to weaning. It is an important trait for breeders turning off animals as vealers or weaners.

400-Day Wt: estimate of the genetic differences among animals in weight at 400 days of age. This is an important trait for breeders turning off animals as yearlings.

600-Day Wt: estimate of the genetic differences among animals in live-weight at 600 days of age. This is an important trait for breeders targeting the production of animals suited for heavy weight grass finished or grain fed market

MATERNAL TRAITS

Milk: estimate of the genetic differences among animals in milk production potential, expressed through variation in calf growth performance. Larger, more +ive, or moderate, Milk EBVs can be more favourable, depending on the environment.

Mature Cow Wt: estimate of the genetic differences among animals in cow weight at 5 years of age.

CARCASE TRAITS

Carcase Wt: estimate of the genetic differences among animals in hot standard carcass weight at 750 days of age. Larger, more +ive, Carcass Weight EBVs are more favourable.

EMA: estimate of the genetic differences among animals in eye muscle area (cm²) at the 12/13th rib site on a 400kg carcass. Larger, more +ive, EMA EBVs are generally more favourable.

Rib Fat: estimate of the genetic differences among animals in fat depth (mm) at the 12/13th rib site, measures on a 400kg carcass. More positive (+ive), or more negative (-ive), Rib Fat EBVs may be more favourable, depending on your breeding goals.

Rump Fat: estimate of genetic differences among animals in fat depth at the P8 rump site on a standard 400kg carcass. More positive (+ive), or more negative (-ive), Rib Fat EBVs may be more favourable, depending on your breeding goals.

IMF%: estimate of genetic differences among animals in percentage intra-muscular fat (marbling) in a 400kg carcass.

TEMPERAMENT TRAITS

Docility: estimate of genetic differences between animals in temperament. Docility EBVs are expressed as differences in the percentage of progeny that will be scored with acceptable temperament (ie. either "docile" or "restless"). Higher Docility EBVs are more favourable.

TRAITS OBSERVED

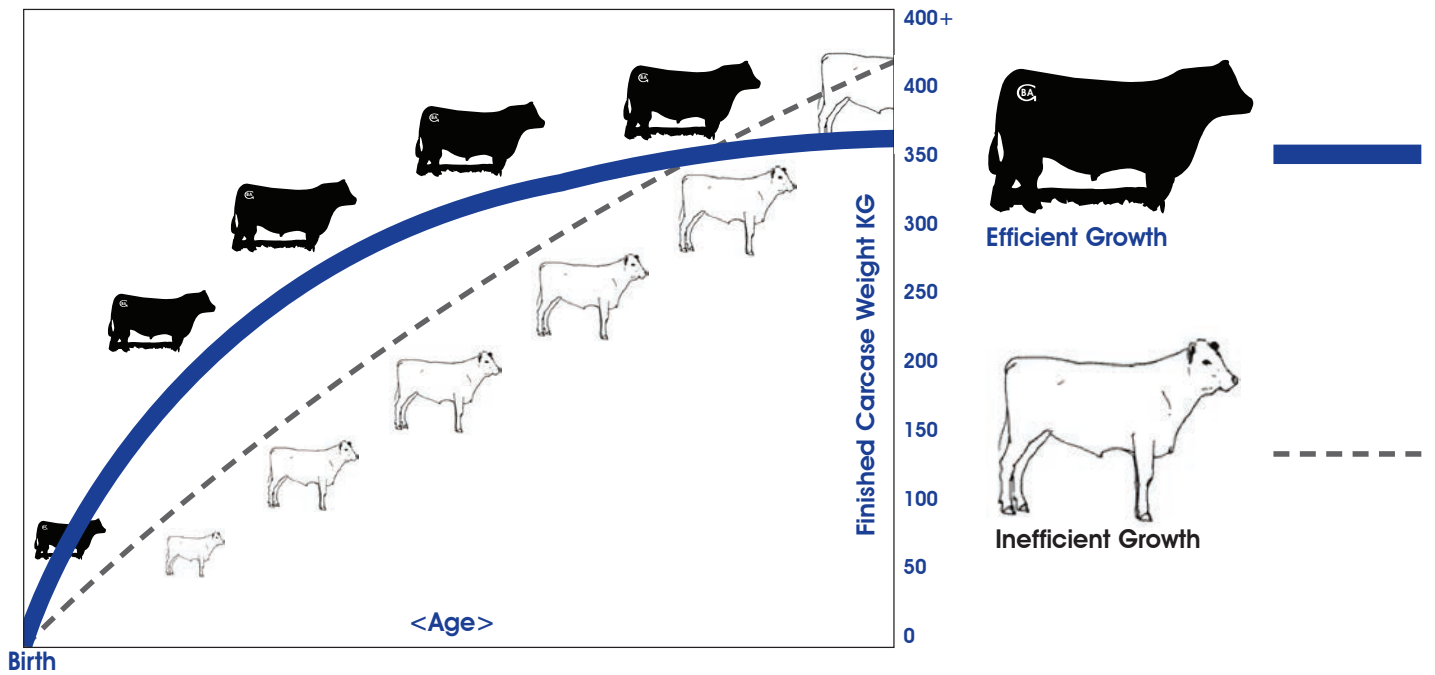
Indicates the traits that have been recorded for a particular animal and are contributing to the EBVs that have been calculated. These will appear directly below the table displaying the animals EBVs.

Glatz's "Spring Cattleman's Bull Sale" EBV Quick Reference Table

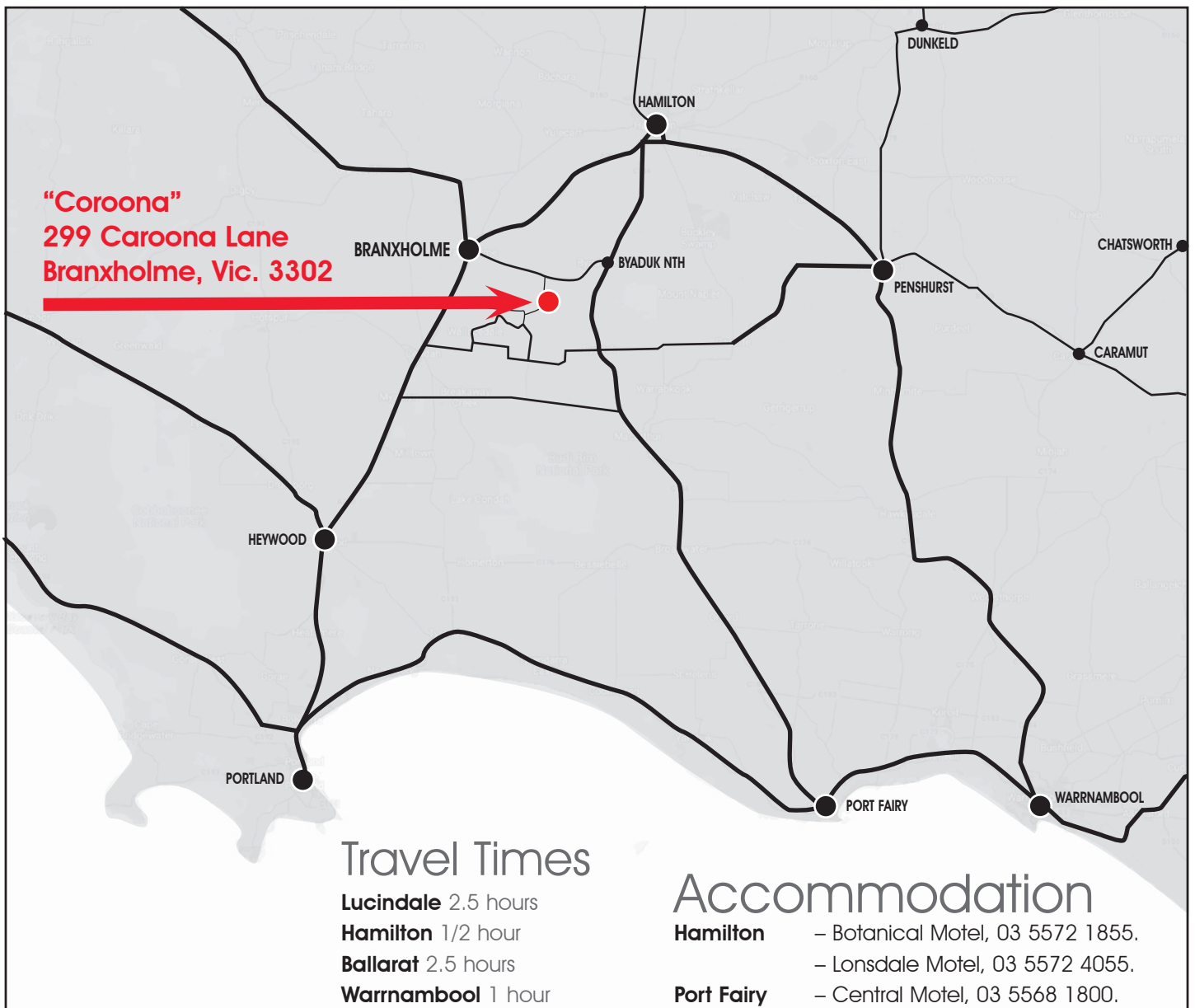
Animal Ident	Calving Ease				Growth				Fertility				Carcass				Temp.	
	CEDir	CEDirs	GL	BWT	200	400	600	MCW	Milk	SS	CWT	EMA	RIB	P8	RBV	IMF	Doc	
1	SJQ23U9	+3.1	+2.7	-6.9	+3.3	+47	+93	+120	+101	+20	+2.4	+66	+2.8	+1.3	+2.8	-0.4	+2.0	+17
2	SJQ23U69	+0.8	+6.1	-4.7	+4.0	+58	+95	+120	+104	+17	+1.8	+72	+6.7	-0.9	-1.4	+0.8	+2.3	+20
3	SJQ23U15	+4.0	+3.4	-5.6	+2.6	+49	+96	+118	+99	+19	+2.9	+68	+3.3	+0.5	+2.1	-0.5	+2.9	+21
4	SJQ23U26	+5.6	+3.4	-7.2	+4.5	+62	+117	+147	+135	+22	+1.9	+94	+4.1	-3.0	-2.9	+0.2	+1.8	+23
5	SJQ23U53	+4.8	+5.6	-8.7	+5.2	+62	+105	+131	+117	+17	+2.4	+81	+6.4	-0.5	-2.8	+1.2	+0.2	+18
6	SJQ23U5	+1.3	+4.7	-7.1	+4.6	+55	+109	+142	+125	+19	+2.6	+82	+3.4	+1.9	+3.4	-0.3	+1.8	+18
7	SJQ23U8	+6.8	+5.6	-7.6	+2.2	+46	+96	+122	+109	+21	+3.5	+64	+2.1	-0.8	+0.1	+0.1	+1.6	+16
8	SJQ23U48	-1.5	+0.2	-4.8	+4.8	+49	+99	+125	+110	+18	+2.5	+69	+3.6	+1.7	+3.0	-0.3	+1.8	+28
9	SJQ23U23	-7.0	+5.9	-3.2	+7.0	+67	+113	+153	+155	+18	+5.0	+81	+3.7	-0.3	+0.9	+0.1	+0.0	+32
10	SJQ23U13	+3.9	+3.7	-6.7	+5.9	+65	+113	+145	+131	+22	+1.8	+92	+9.6	-1.2	-3.7	+1.4	+0.7	+27
11	SJQ23U28	+2.7	+1.8	-5.5	+5.5	+64	+109	+143	+123	+15	+3.2	+82	+0.7	+0.9	-0.5	-0.6	+2.2	+19
12	SJQ23U21	-0.9	+4.0	-6.1	+5.4	+64	+109	+136	+120	+13	+1.1	+79	+11.2	-2.7	-3.8	+1.4	+1.2	+18
13	SJQ23U31	-0.7	+3.0	-7.4	+6.4	+67	+118	+149	+138	+19	+2.1	+87	+6.7	-1.4	-1.5	+0.2	+2.3	+19
14	SJQ23U33	+6.2	+5.8	-4.8	+3.6	+59	+100	+125	+103	+21	+2.2	+73	+7.6	+0.3	-2.0	+0.7	+1.6	+13
15	SJQ23U68	+3.8	+4.8	-3.1	+5.0	+59	+97	+123	+106	+20	+1.9	+73	+9.1	-0.1	-2.2	+1.3	+0.9	+22
16	SJQ23U10	+5.9	+7.0	-10.3	+3.0	+60	+117	+149	+154	+15	-0.3	+90	+1.5	+1.1	+1.3	-0.9	+2.8	+19
17	SJQ23U50	+2.2	+3.9	-5.3	+4.0	+57	+101	+123	+124	+14	+3.5	+73	+7.8	-1.2	-3.6	+1.0	+1.2	+26
18	SJQ23U79	-7.1	-4.2	-1.4	+6.5	+62	+102	+143	+118	+19	+5.7	+75	+5.5	+1.0	+1.3	-0.1	+2.6	+26
19	SJQ23U3	+5.1	+4.9	-5.7	+5.2	+58	+99	+125	+112	+19	+2.1	+78	+6.0	-0.2	-2.4	+1.2	+0.8	+25
20	SJQ23U88	+6.4	+5.8	-4.5	+3.1	+51	+90	+117	+91	+15	+2.8	+63	+6.9	+0.8	+0.1	+0.3	+1.8	+27
21	SJQ23U90	+4.2	+5.7	-7.2	+3.5	+64	+108	+129	+101	+13	+2.4	+75	+8.6	-1.0	-2.0	+0.3	+2.9	+20
22	SJQ23U20	+5.8	+4.0	-5.3	+3.5	+58	+97	+135	+119	+17	+2.1	+73	+5.8	-1.1	-3.2	+0.5	+1.9	+20
23	SJQ23U55	+0.6	+0.5	-2.4	+3.8	+42	+84	+106	+93	+18	+1.9	+58	+3.0	+0.6	+2.3	+0.0	+1.9	+22
24	SJQ23U56	+5.5	+4.6	-4.3	+2.9	+57	+99	+126	+99	+17	+3.9	+69	+3.9	+0.1	-1.1	-0.1	+2.2	+29
25	SJQ23U80	+3.9	+4.8	-3.8	+1.9	+51	+89	+108	+88	+16	+2.7	+61	+6.8	+0.0	-0.6	+0.7	+1.5	+29
26	SJQ23U58	+3.4	+2.0	-2.3	+3.1	+48	+91	+122	+107	+23	+2.1	+71	+2.6	-1.9	-1.2	+0.2	+2.2	+26
27	SJQ23U116	+1.9	+1.1	-5.4	+4.9	+58	+103	+134	+127	+23	+3.1	+73	+8.2	-1.4	-4.0	+0.7	+1.6	+31
28	SJQ23U109	-3.9	+0.0	-4.0	+4.8	+60	+103	+134	+108	+20	+3.6	+87	+8.2	-0.4	+0.0	+0.6	+0.8	+36
29	SJQ23U86	-0.1	+4.8	-6.0	+4.6	+61	+102	+123	+107	+11	+3.0	+68	+9.3	-1.9	-2.6	+1.0	+2.8	+18
30	SJQ23U73	+1.5	+2.2	-4.7	+4.5	+56	+91	+115	+111	+12	+2.9	+64	+3.8	+0.1	-0.9	+0.6	+1.2	+30
31	SJQ23U83	+1.8	+1.5	-3.0	+4.0	+52	+90	+110	+93	+13	+3.7	+60	+6.8	-1.6	-2.8	+0.9	+1.4	+35
32	SJQ23U87	-0.6	+0.3	-4.0	+4.6	+53	+81	+110	+84	+15	+2.7	+62	+9.1	+2.5	+2.6	+1.0	+1.2	+18
33	SJQ23U113	+1.4	+1.0	-4.4	+5.2	+50	+89	+116	+96	+16	+2.6	+67	+6.6	+2.1	+2.1	+0.8	+0.7	+32
34	SJQ23U110	-1.0	+4.2	-3.9	+4.4	+58	+89	+117	+106	+19	+2.8	+66	+4.4	-0.6	-2.4	+0.4	+3.1	+24
141																		
151																		
174																		
200																		
197																		
197																		
171																		
182																		
204																		
220																		
201																		
170																		
185																		
188																		
188																		
195																		
197																		
200																		
195																		
195																		
205																		
183																		
120																		
211																		
172																		
150																		
210																		
208																		
175																		
166																		
167																		
142																		
178																		
141																		



Top 20% Top 50%



The most efficient form of growth — Dimension + Maturity Pattern + Function





Buyers Instruction Slip

PURCHASER DETAILS

Name:.....T/A.....

Mailing Address:.....Postcode:.....

Email:.....UHF:.....

Telephone:.....Mobile:.....

PIC:.....Angus Herd ID:.....Signature:.....

DELIVERY INSTRUCTIONS

Lots Purchased:.....

Insurance: Y N Type of Cover:.....

Property Directions / Roadside Address.....

.....

.....

Map No.:.....Map Reference:.....

Special Instructions:.....

.....

.....

ACCOUNT SETTLEMENT

The name and signature of your agent is required.

Agent:.....

Agent Telephone:.....Signature:.....



Ellingson Rangeland

“Ellingson Rangeland represents one of the highest credentialled Angus herds in the US. Ellingson’s Angus are renowned for breeding structurally sound bulls ideal for self-replacing cow herds. Rangeland sons excel for Calving Ease, Growth, Structural Soundness and Maternal Traits. Rangeland’s first sons were extremely sought after in the 2023 Ellingson sale selling to \$160,000”

All in the one brand...

* Problem Free Bulls * Proven Performance * Proven Carcase Quality

