



TOPIRAM
SPECKLE PARK

Presents

THE **‘EVOLUTION’** SALE

FRIDAY 14th JUNE 2024

VIA AUCTIONSPLUS @ 5PM



AuctionsPlus





Welcome to Topiram!

We are so pleased to be hosting our first Speckle Park Stud Sale, on Friday June the 14th. We are very proud of the heifers and genetics we have on offer, and we sincerely thank you for taking an interest in our program.

We are the Potter family - Aaron and Allison, and our three young boys Logan (13), Jake (11) and Hayden (6). Our stud is located in the beautiful and productive South Gippsland region of Victoria, in amongst the rolling green hills and messmate trees.

Our property, named Topiram, has been in our family for over 100 years, originally being purchased by Allison's Great-Grandfather. The name 'Topiram' is the place name of our farm location. Like many other small rural localities, it was once a place of local significance, boasting a train station which was key infrastructure for the transporting of agricultural goods and produce, along with a post office and telephone exchange. Although not much remains of the once prominent infrastructure, the one thing that hasn't changed is the ability of this land to grow grass, and lots of it! Our cattle are predominantly grass fed, with supplementation only when required. Our pastures are perennial ryegrass based, with additions of clover, chicory and most recently, plantain, as we work towards incorporating a greater variety of species into the mix.

Topiram Speckle Park Stud was first registered in January 2019, following the purchase of two bulls early in 2018. Since then, we have sought to invest in the best genetics that were available to us, with our foundation females resulting from purchases of live animals or embryos from the Waratah, Mount Eccles, JAD, Ewyn, Jackungah, Pinnacle Park, and Greenwood Speckle Park studs. Our focus is on breeding structurally sound, efficient, fertile, good-natured cattle.

Having taken part in multi-vendor sales for the past three years, we felt the time was right in the development of our stud, to hold our own, online only sale of a select group of our best young females and embryos from our top donor cows. We acknowledge that we are in the 'deep south' down here in Gippsland, and as such we would like to offer interstate purchasers of live lots, a freight subsidy to assist in getting their new animals home. Please get in touch with us prior to the sale to discuss.

We would also like to extend a welcome to you all, to attend our open day on Sunday 2nd June. All live lots will be on display, along with a number of our foundation females. We will also have some yearling bulls available for private sale on the day.

Thank you for your support and interest in our program, and please don't hesitate to get in touch with any questions you may have.

Regards,

Aaron, Allison, Logan, Jake and Hayden

CONTACTS

Aaron & Allison Potter
'Topiram Park', 230 Treadwells Road, Poowong North,
Victoria 3988

Phone: Allison 0428599273
Email: aaronallison@dcsi.net.au

Ryan Bajada ~ 0435 411 536
Elders Stud Stock

SALE

Sale will be conducted online Via Auctionsplus on
Friday 14th of June at 5pm

BUYER REGISTRATIONS

This sale will be conducted by ONLINE BIDDING
ONLY through AuctionsPlus. To purchase at this sale,
you will need to be a registered buyer with
AuctionsPlus. For information on how to register, please
see page 4 of this sale catalogue
GST will be added to the purchase price of all lots on
invoicing

HEALTH

DNA tests have been completed on all live lots to verify
that they are not persistently infected with Pestivirus.
All live lots are up to date with 7 in 1 vaccination (most
recent booster 10/5/2024). All live lots drenched with
Trifecta on 10/5/2024

DNA, COLOUR & POLLED TESTING

All sale lots have been tested for colour, polled and
genetic status' with results indicated online and or in
the catalogue. All lots have been 50K DNA tested and
Parent verified.

DELIVERY

Deliveries can begin from Saturday 15th June. Please
get in touch if you require assistance with transport
arrangements.

REGISTRATIONS

Purebred females – all purebred females have been DNA
tested and have active registrations with Speckle Park
International (SPI)

The vendor takes responsibility for, and will cover the
cost of, registration transfers for all live lots, where the
purchaser is a registered breeder with SPI

INTERSTATE FREIGHT SUBSIDY

We are pleased to offer a freight subsidy to
interstate purchasers of live lots, if arranged prior to
sale day. Please make contact with the vendor for fur-
ther information.

INSPECTIONS

An Open Day will be held on property at Poowong
North on Sunday 2nd June from 10am-3pm, for inspec-
tion of all live lots. Private inspections are welcome, by
arrangement with the vendor.

INSURANCE

We recommend insuring all purchases at the fall of the
hammer. Insurance representative contacts will be
made available on sale day.

ANIMAL GUARANTEE

All females in this sale have passed a veterinary
inspection and are deemed to have two fully
functioning ovaries.

EMBRYO GAURENTEE

Embryo lots are qualified for domestic use only (within
Australia)

All embryos offered are Grade 1

Purchasers are responsible for costs associated with
shipping and handling of embryos. The vendors will
assist with making arrangements for shipping if
requested

All embryo lots are stored either at Leading Edge
Genetics, Warragul, or with Dr Doug Watson (Veterinary
Embryo Transfer Services), Leongatha

All embryo lots are sold as a package of 4 embryos. The
purchase price will be per embryo, therefore will be

multiplied by 4, and GST will be added.

A 60 day pregnancy guarantee of 2 pregnancies per 4
embryos implanted will be provided, on the basis that
the following conditions are met; All 4 embryos must be
implanted on the same date, All embryos are implanted
by a qualified ET veterinarian (endorsed by Topiram
Speckle Park prior to implant), Suitable recipients are
used (as determined by endorsed ET Veterinarian) Preg-
nancy status must be determined by a qualified
veterinarian 45-60 days following implant date.
In the event that pregnancy guarantee is not achieved,
and a claim is submitted, the following will apply; ET
veterinarian transfer documentation and pregnancy test
results (in writing) must be provided to Topiram Speck-
le Park within 3 months of implantation, One replace-
ment embryo will be provided per non pregnancy below
the guaranteed number of 2 pregnancies. For example,
if 1 pregnancy is achieved,
1 replacement embryo will be provided.

Replacement embryos will be the same embryo as
purchased, if available, or otherwise of similar value as
determined by Topiram Speckle Park

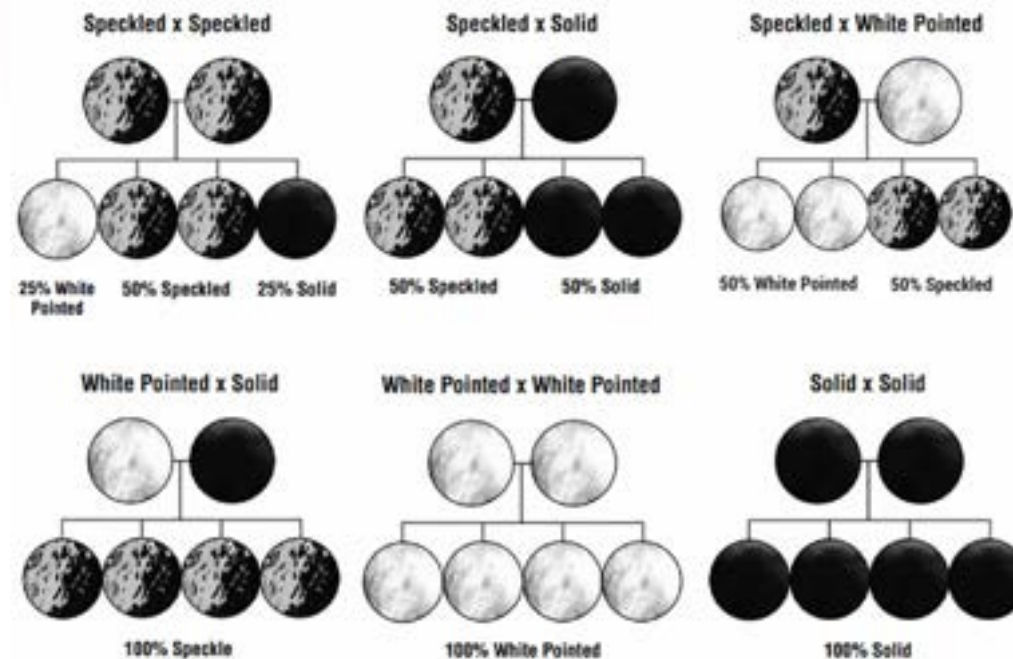
TERMS AND CONDITIONS

All lots will sell under the Australian Livestock & Prop-
erty Agents Association Ltd Standard Stud Stock Auc-
tion terms and Conditions of sale. If unfamiliar please
obtain a copy from Elders or TOPIRAM.

SALE CATALOGUE DISCLAIMER

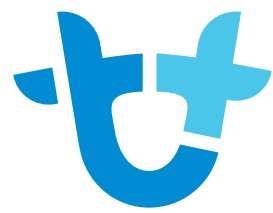
All reasonable care has been taken by the vendor and
designer to ensure that the information provided in this
catalogue is correct at the time of
publication. However, neither the vendor, selling agents
and designer make no other representations about the
accuracy, reliability or completeness of any information
provided in this catalogue and do not assume any
responsibilities for the use or
interpretation of the information included in the
catalogue.

SPECKLE PARK COLOUR GUIDE



DNA GENETIC TESTING

Myostatin	F	Free of myostatin gene (NT821F)
	C	Carrier of myostatin gene (NT821C)
Coat Colour	RGF	Free of red gene
	RGC	Carrier of red gene (carries 1 copy)
Poll/Horn	PCPC	Homozygous polled
	HPc	Carrier of horn gene (carries 1 copy – may be scurred)
Leptin	CC	Normal marbling and fat accumulation
	CT	Marbling and fat accumulation between CC and TT
	TT	Increased marbling and fat accumulation



AuctionsPlus

How to register as an AuctionsPlus user/buyer

1. To sign up to AuctionsPlus, fill in your details and create a security PIN.
2. Verify your email and phone number.
3. Follow the steps to verify your ID.
4. Enter your PIC number, ABN and business details if relevant.
5. Carefully read and accept our user rules and responsibilities.
6. Complete the user quiz.
7. Submit your request to our team.



Scan to sign up now



Scan to see detailed
step by step instructions

(02) 9262 4222

www.auctionsplus.com.au



Topiram Princess Belva T31

	EBV	ACC
GL	+1.6	51%
BW	+3.7	69%
200DW	+21	65%
400DW	+27	62%
600DW	+32	62%
MCWT	+29	51%
MILK	-1	46%
SS	0.0	57%
CWT	+16	51%
EMA	+1.1	43%
RIB	+0.7	53%
RUMP	+0.8	52%
RBV	0.0	48%
IMF	-0.3	48%



Ident - TOP T31

DOB - 25/09/2022

Colour - Speckled

BW - 42KG



DAM



SIRE

RAVEN MEADOWS MAGNUM 10N

S - UPTO SPECS ULYSSES 25U

PRAIRIE HILL REBA 154F

UNEEDA WONDERBAR 05W

D - DOUBLE S BELVA 154B

P.A.R. RAINA DOLL 154W

A top-class heifer to start the sale offering!
 Purchased as an embryo from the heart of the Greenwood herd in Canada, Princess Belva T31 is developing into an outstanding female, just like her dam. T31 is a powerful but refined, larger framed heifer with excellent structure and temperament, who is halter broken and has been lightly shown. Here is a great opportunity to invest in a future matron. She sells open, leaving all breeding options available to purchaser.

Topiram L11 Miss Logic U7

	EBV	ACC
GL	+0.2	53%
BW	+3.6	70%
200DW	+22	68%
400DW	+35	66%
600DW	+48	66%
MCWT	+52	55%
MILK	+7	50%
SS	-0.2	62%
CWT	+30	56%
EMA	+1.9	47%
RIB	-1.2	58%
RUMP	-1.8	57%
RBY	+1.8	54%
IMF	-0.4	53%



Ident - TOP U7

DOB - 27/02/2023

Colour - Speckled

BW - 37KG



DAM



SIRE

SIX STAR 82U ROYAL FLESH 101Y

S - PREMIER 101Y LOGIC L11

SPKNZ H2

CODIAK CALVIN GNK 58Y

D - JAD 58Y MISS SAGE P41

MISS SAGE 5R

Miss Logic U7 is a beautiful, feminine, deep bodied heifer with a real presence about her. Her dam, JAD 58Y Miss Sage P41, has proven herself to be a very easy keeping female who is very fertile, has great udder and teat conformation, plentiful milk supply, and as a result, consistently raises excellent calves. We expect U7 to follow in the footsteps of her dam, with the added bonus of a bit more frame size as a result of her sire in Premier Logic L11. She sells open and ready to join.

Topiram Bobby Jean U8

	EBV	ACC
GL	-0.1	49%
BW	+0.7	66%
200DW	+12	62%
400DW	+23	58%
600DW	+36	58%
MCWT	+42	47%
MILK	+7	43%
SS	+0.3	51%
CWT	+23	47%
EMA	+0.7	38%
RIB	-0.1	48%
RUMP	-0.2	47%
RBV	+0.1	43%
IMF	+0.2	43%



DAM



SIRE

Ident - TOP U8 | DOB - 28/02/2023 | Colour - Leopard | BW - 31KG

CAJA ZEPPELIN 1B

S - MT ECCLES LED ZEPPELIN P36

WHITE ACRES KATIE

A & W 15R

D - WARATAH WARATAH E25 AMY

WARATAH E25

The first of three Waratah Amy J196 daughters in the sale, Topiram Bobby Jean U8 is a typical, quality Amy heifer super quiet, with excellent body depth and capacity. With great maternal lines on both sides of the pedigree, and a dam who raises quality calves consistently, owing to excellent maternal traits, U8 will be an asset to any herd. She sells open and ready to join.

Topiram Uptown Girl U025

	EBV	ACC
GL	-0.8	43%
BW	+1.4	65%
200DW	+16	57%
400DW	+24	53%
600DW	+25	54%
MCWT	+31	42%
MILK	-1	38%
SS	+0.8	47%
CWT	+15	42%
EMA	+0.1	33%
RIB	+1.4	44%
RUMP	+1.8	43%
RBV	-1.0	38%
IMF	+0.2	38%



Ident - TOP U025 | DOB - 23/09/2023 | Colour - White | BW - 38KG



DAM



SIRE

SEMEX ALLIANCE YOGI GOES REDNECK

S - DEEARGEES NEW FRONTIER

WARATAH J7

WOLF LAKE BOB 24E

D - WARATAH ROSE Q7

MOOVIN ZPOTZ YELLOW ROSE 7Y

The first of 2 full sisters on offer here is Uptown Girl U025. These heifers are an exciting blend of outcross pedigree on the maternal side and tried and true pedigree on the sire side in Deeargee New Frontier N4, a sire who has proven his ability to breed outstanding females as exemplified in the Deeargee herd! This free moving heifer carries her depth and thickness effortlessly and is sure to develop into a powerful cow.

Topiram Uptown Girl U026

	EBV	ACC
GL	-1.2	43%
BW	+0.4	65%
200DW	+12	57%
400DW	+19	54%
600DW	+19	54%
MCWT	+24	42%
MILK	0	38%
SS	+1.0	47%
CWT	+13	42%
EMA	0.0	33%
RIB	+1.0	44%
RUMP	+1.3	43%
RBY	-0.8	39%
IMF	+0.2	39%



Ident - TOP U026 | DOB - 24/09/2023 | Colour - Leopard | BW - 37KG



DAM



SIRE

SEMEX ALLIANCE YOGI GOES REDNECK
S - DEEARGEES NEW FRONTIER
WARATAH J7
WOLF LAKE BOB 24E
D - WARATAH ROSE Q7
MOOVIN ZPOTZ YELLOW ROSE 7Y

Uptown Girl U026 is a striking young heifer of the Waratah Rose Q7 x Deeargee New Frontier N4 combination, exhibiting the same depth, thickness and topline as her sister in Lot 4. Both of these heifers have impressed since birth and we are excited to offer them for your consideration. We expect them to grow into decent sized cows with good udders, just like their dam.

Topiram Sherry Darling U027

	EBV	ACC
GL	+0.7	41%
BW	0.0	65%
200DW	+1	56%
400DW	+8	51%
600DW	+13	52%
MCWT	+14	39%
MILK	+2	37%
SS	+0.5	44%
CWT	+8	38%
EMA	+0.5	30%
RIB	+0.9	41%
RUMP	+1.1	39%
RBY	-0.6	34%
IMF	+0.3	35%



DAM



SIRE

Ident - TOP U027 | DOB - 26/09/2023 | Colour - Leopard | BW - 38KG

MATTERS EXCELLENCE 50E

S - SPLASH OF BLACK GOTCHA

MATTERS DANCER 7D

A & W 15R

D - WARATAH WARATAH E25 AMY

WARATAH E25

We are pleased to offer another pair of full flush sisters, this time from the Amy cow family, sired by Splash of Black Gotcha 7G. Sherry Darling U027 is a very correct young heifer and is sure to develop just like all the Amy heifers we have bred - plenty of body, fertile, good udders and excellent temperament - the real maternal type!

Topiram Sherry Darling U028

	EBV	ACC
GL	+1.9	40%
BW	+2.7	65%
200DW	+12	55%
400DW	+21	50%
600DW	+29	51%
MCWT	+33	38%
MILK	+3	36%
SS	+1.0	44%
CWT	+15	38%
EMA	+0.5	30%
RIB	+0.5	40%
RUMP	+0.7	39%
RBV	-0.2	34%
IMF	+0.2	34%



DAM



SIRE

Ident - TOP U028 | DOB - 27/09/2023 | Colour - White | BW - 38KG

MATTERS EXCELLENCE 50E

S - SPLASH OF BLACK GOTCHA

MATTERS DANCER 7D

A & W 15R

D - WARATAH WARATAH E25 AMY

WARATAH E25

Sherry Darling U028 is slightly bigger than her sister in Lot 6, while displaying the same depth and thickness.

She is a very sweet heifer, and one of our favourites, making her hard to part with! She too is shaping up just like a typical Amy daughter - a heifer that ticks all the boxes!



Waratah Pho-Finish J89 x Greenwood Hundred Proof 19H

WATTLE GROVE MOONSHINE E10

D - WARATAH PHO-FINISH J89

WARATAH E23

CODIAK SO LONG GEORGE GNK 6Z

S - GREENWOOD HUNDRED PROOF 19H

A & W 18U



Maternal Daughter



Maternal Daughter

x



Lot 8A & 8B

Waratah Pho-Finish J89 x Greenwood Hundred Proof 19H

4 embryos (stored at Veterinary Embryo Transfer Services, Leongatha)

The matron of Topiram! A super exciting genetic combination here with the magnificent Pho-Finish maternal line in LST J89, paired with the highly sought after growth and performance sire in Greenwood Hundred Proof. J89 is a quiet natured, leptin T/T cow with great capacity, width of muzzle, a strong topline, and plenty of muscle. She will be 11 years old later this year and her udder is holding up extremely well, as is her fertility – this very flush resulted in 22 embryos. This cow does not miss!

Mount Eccles P14 x Notta 1B Hawkeye 444E

MT ECCLES ANTARTICA

D -MT ECCLES P14

MT ECCLES TSUNAMI

CAJA ZEPPELIN 1B

S -NOTTA 1B HAWKEYE 444E

NOTTA 50S JANETTE 5W



x



Maternal Daughter



Maternal Daughter

Lot 9

Mount Eccles P14 x Notta 1B Hawkeye 444E

4 embryos (stored at Veterinary Embryo Transfer Services, Leongatha)

We purchased P14 from the Mount Eccles dispersal back in 2019 and she continues to deliver the goods! Her progeny are of consistently high quality, with daughters selling to \$13,000 and our number one home bred female, Topiram Sky Blu S8, being a daughter of P14 also. We are super excited about this combination with Hawkeye! P14 is a moderate framed cow with excellent temperament, structure and udder conformation.

Waratah E25 Amy J196 x Wattle Grove Smoke and Mirrors L275

A & W 15R

D - WARATAH WARATAH E25 AMY J196

WARATAH E25

CODIAK PUTNAM GNK 61Y

S -WG SMOKE AND MIRRORS L275

CODIAK GOOD GOLLY GNK 11U



Maternal Daughter



Maternal Daughter

x



Lot 10

Waratah E25 Amy J196 x Wattle Grove Smoke and Mirrors L275

4 embryos (stored at Veterinary Embryo Transfer Services, Leongatha)

The Amy cow family needs no introduction and has been well represented in our sale catalogue, for very good reason. The combination with Smoke and Mirrors promises to deliver well balanced progeny that tick all the boxes - a tried and true pedigree here! These embryos are likely to be the last we sell from J196 as we have now retired her from the donor pen in her 11th year.

Waratah Rose Q7 x Deeargee New Frontier

WOLF LAKE BOB 24E

D - WARATAH ROSE Q7

MOOVIN ZPOTZ YELLOW ROSE 7Y

SEMEX ALLIANCE YOGI GOES REDNECK

S - DEEARGEЕ NEW FRONTIER

WARATAH J7



x



Full Sibling



Full Sibling



Lot 11

Waratah Rose Q7 x Deeargee New Frontier N4

4 embryos (stored at Veterinary Embryo Transfer Services, Leongatha)

What you see is what you get! Take a look at Lot 4 and 5 – two stylish heifers of this very combination! Waratah Rose Q7 brings an outcross maternal line combined with Deeargee New Frontier, an impressive Yogi Goes Redneck son of the outstanding Waratah J7 cow. Waratah Rose is a cow with excellent udder conformation, depth of body and of larger frame size.

EWYN 22D JANNETTE R08 x UNLIMITEDSPOTS GRNWD FUTURE 20F

DANGIT MATTERS 22D

D - EWYN 22D JANNETTE R08

FLEURIEU FIREWORKS

RIVER HILL BACKGROUNDER 025B

S - UNLIMITEDSPOTS GRNWD FUTURE20F
BLACKIE RAINA OF P.A.R. 21Z



Full Sibling

x



Lot 12

Ewyn 22D Jannette R08 x UNLIMITEDSPOTS GRNWD
FUTURE 20F

4 embryos (stored at Leading Edge Genetics, Warragul)

A daughter of this flush was in our show team for Sydney Royal 2023! Here's a great opportunity to invest in the Jannette line, with a sire that has added length and further power to an already thick, deep bodied young cow. WYN R08 is a lovely young cow with an incredibly quiet temperament, and with proof in the paddock at home, we have full confidence that these embryos will impress!

Waratah Ember P93 x Wolf Lake Field Ready 52F

MINNAMURRA LANCELOT L14

D - WARATAH EMBER P93

WARATAH EMBER J185

RIVER HILL 26T YAGER 99Y

S - WOLF LAKE FIELD READY 52F

NOTTA PHO-FINISH 54P



Maternal Daughter

x



Lot 13

Waratah Ember P93 x Wolf Lake Field Ready 52F

4 embryos (stored at Leading Edge Genetics, Warragul)

Waratah Ember continues to be a standout in the Topiram herd. She is a moderately framed cow, very structurally correct, with a quiet temperament and excellent udder conformation and milk supply. A number of her progeny have made it into our show team, and we are very excited about this mating with the now deceased Field Ready 52F from Wolf Lake in Canada, judging by the quality and presence of his progeny in both Canada and here in Australia.

REFERENCE SIRES



SPLASH OF BLACK GOTCHA 7G



DEEARGEE NEW FONTIER



UPTO SPECS ULYSSES 25U



PREMIER 101Y LOGIC L11



MT ECCLES LED ZEPPELIN

REFERENCE DAMS



WARATAH WARATAH E25 AMY J196



DOUBLE S BELVA 154B



WARATAH ROSE Q7



JAD 58Y MISS SAGE P41

Thank you to everyone who has supported our sale - the successful purchasers, under bidders, and all who have taken an interest in our cattle. We are sincerely grateful. We would also like to thank those who have helped to bring everything together for this sale - to Ryan Bajada (Elders Stud Stock) for his guidance and expertise, Paul Hourn and Kelly Krieg and their team for their assistance in presenting our cattle, Brandon Sykes (BJS Livestock Photography) for always capturing our cattle beautifully, and Annie Pumpa for her expertise in bringing it all together in this catalogue. We would also like acknowledge and thank Udo Mahne for sharing his wealth of knowledge and advice from very early on.

