

# ROSEDALE CHAROLAIS 35<sup>TH</sup> ANNUAL BULL SALE



FRIDAY 17<sup>TH</sup> MAY 2024  
AUCTION STARTS 12PM



60 X CHAROLAIS BULLS | 32 X COMPOSITE BULLS | 8 X YEARLING HEIFERS

# 35TH ANNUAL BULL SALE

Friday 17th May 2024 - 12 pm  
on property at "Rosedale" Blayney



## CONTACTS

### James Millner

Mobile: 0425 341 341  
millner@rosedalecharolais.com.au

### Michael and Jenny Millner

Ph: (02) 6368 7195  
Mobile: 0409 682 339

## FOLLOW US



rosedalecharolais.com.au

## ONLINE SALES



## AUCTIONEER



Paul Dooley  
0458 662 646

## SELLING AGENTS



<b>Todd Clements</b> 0429 070 225	<b>Tom Card</b> 0438 594 675
<b>Nick Fogerty</b> 0409 070 225	<b>Justin Guy</b> 0421 467 520

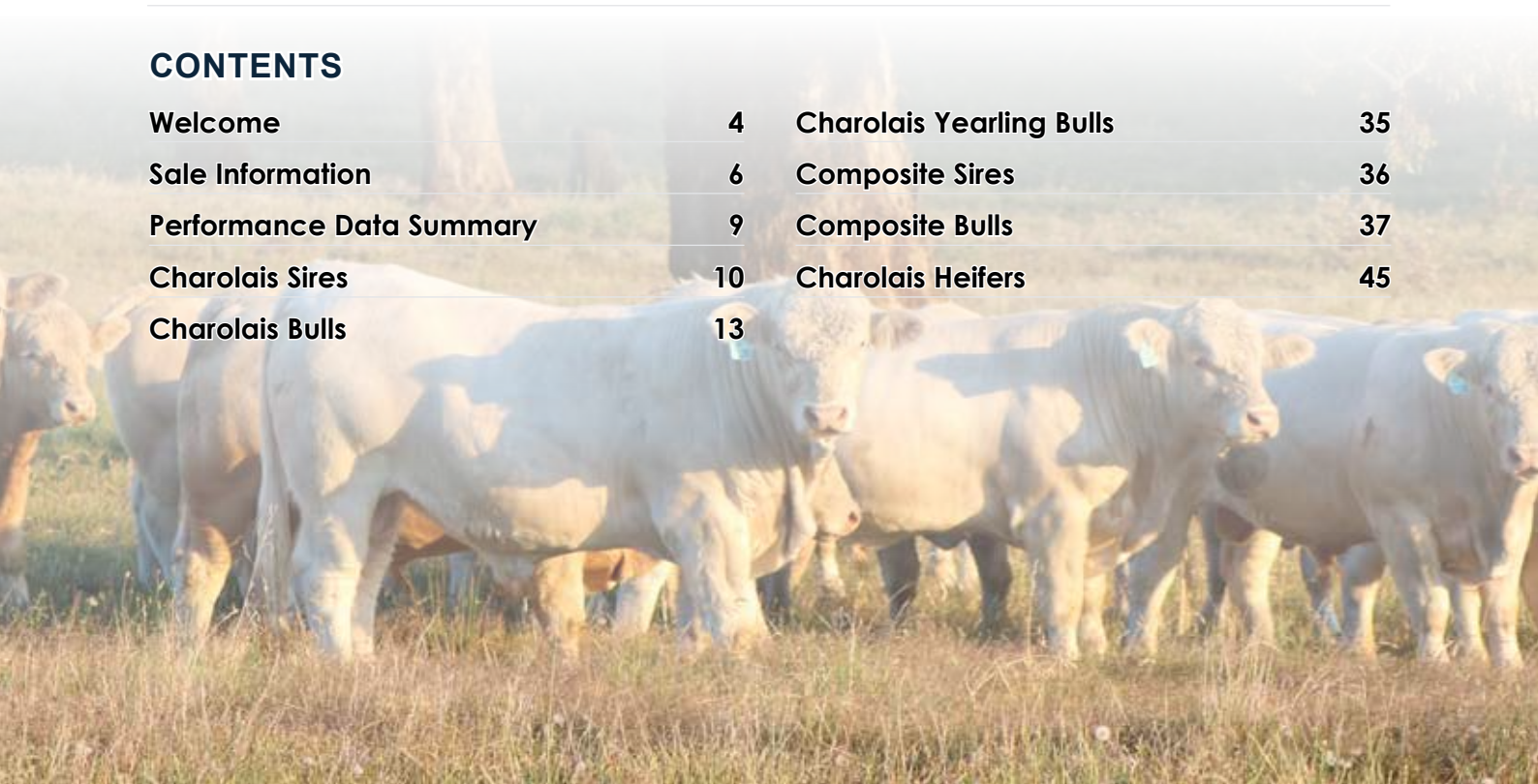
## SELLING AGENTS



<b>Andrew Bickford</b> 0427 943 781	<b>Paul Jameson</b> 0428 667 998
<b>Lincoln Mckinley</b> 0419 239 963	<b>Brian Kennedy</b> 0427 844 047

## CONTENTS

Welcome	4	Charolais Yearling Bulls	35
Sale Information	6	Composite Sires	36
Performance Data Summary	9	Composite Bulls	37
Charolais Sires	10	Charolais Heifers	45
Charolais Bulls	13		



# LEADING from the front FOR OVER 50 YEARS



**Rosedale Charolais are your proven source of top quality polled Charolais genetics.**

Rosedale continues to lead the way in Australia's carcass competitions with unrivalled success in recent times.

This is a true reflection that our breeding program is on the right track and that our genetics are performing in real world commercial situations.

We have a wide range of bulls to cover all Australian domestic and export markets, including stud sire duties. We welcome your inspection and stand 100% behind the bulls we put on offer. We focus on growth and meat quality and this is reflected in our carcass competition successes.

**Our cattle are specifically bred for profitable cross-breeding under Australian conditions.**

## **ROSEDALE'S PROVEN COMMERCIAL PERFORMANCE IN AUSTRALIA'S BIGGEST INDEPENDENT FEEDLOT TRIALS.**

### **NSW BEEF SPECTACULAR FEED LOT TRIAL**

- 2013** Grand Champion Team, Most Profitable Team Reserve Champion Weight Gain
- 2014** 3 Teams in the Top 10 (out of 120 entered) 2nd Most Profitable Team
- 2016** Champion Weight Gain, Most Profitable
- 2017** Reserve Champion Weight Gain, 2nd most profitable Team. 3rd Overall
- 2018** Riverine Classic Champion
- 2019** 10th overall and 3 teams in the top 20.
- 2021** Grand Champion & Reserve Champion Team, (4 teams in the top 6)
- 2022** 3 Teams in the top 20
- 2023** 3 teams in the Top 10 (4th, 7th, 8th)

### **SYDNEY ROYAL BEEF CHALLENGE**

- 2012** Grand Champion Domestic Team
- 2013** Grand Champion Export Team
- 2015** Grand Champion Domestic Team
- 2016** Grand Champion Export Team, 4th Domestic Team
- 2019** Branga Plains - Grand Champion Domestic Team (Rosedale Genetics)
- 2022** Grand Champion Domestic Individual Animal, Champion Eating Quality (domestic)
- 2023** Grand Champion Domestic Pen, Reserve Champion Domestic Pen, Most Profitable Team, Highest MSA Indexing Team

### **BRISBANE ROYAL Paddock TO PALATE**

- 2017** Highest MSA Indexing Team (Domestic)
- 2019** Champion Domestic Team
- 2020** Reserve Champion Export Team HGP Free





# WELCOME TO OUR 35TH ANNUAL BULL SALE

Welcome to our 35th On Property Annual sale at Rosedale - a small milestone in itself to host our 35th Annual on property sale. On reflection it has been a great journey to be involved in and we have still remained relevant despite industry changes, trends and volatility at times. The Australian Beef industry has progressed significantly in that time and we have seen three major trends 1 - The export market has grown significantly and we now have a more diverse list of countries who rely on our beef- close to 70% of Australian Beef is now exported overseas. 2 - The Australian Feedlot sector has evolved significantly and now approximately 50% of all Australian Beef comes from grain fed systems. 3- The average carcass weight at slaughter has increased approximately 50 kg's over the past 35 years. While all emerging trends can be dissected and dismantled the one thing is clear - Australian Beef is a robust and diverse industry and we are a very important player in global food production. It is important to keep striving to make Australian beef a better product and at the same time make beef production as profitable as we can whilst also keeping in mind our carbon footprint.

Terminal sires continue to pave a way towards production efficiencies and lowering our Carbon footprint. The great thing is there is a huge correlation linking efficient production, meat quality and a low carbon footprint. The faster an animal gets to market the lower the carbon footprint that animal has in general terms. This efficiency in time to market also means that cattle are leaving our production systems earlier which not only improve cash flows but means our resources can be freed up for other purposes. Thirdly from a meat quality point of view the younger an animal can get to slaughter weight the higher the tenderness and meat quality with less ossification. A Charolais bull joined to a more moderate sized British or Bos Indicus based breeding female offers lower carbon footprint and calves will grow quicker and get to market faster. Efficiencies of up to 20% can be achieved and at the end result is a great product.

We are very proud of the Charolais bulls we have in this draft and think they line up evenly and are well suited for today's markets. We have focused on breeding for growth but also concentrating on fat cover and marbling as these traits relate to meat quality which are becoming more important as meat markets develop and relate to both grain and grass fed production systems. We are also proud to announce that over 3 quarters of the Charolais bulls in this draft are homozygous polled. This is the largest offering of homozygous polled bulls sold in Australia to date and is the reward for over 35 years on gradual genetic selection that has ensured the other production traits of our herd have not been compromised.

The composite bulls this year we are also very pleased with and our Charolais x Shorthorn composites are yet again very impressive bulls. These composites are industry focused bulls and have proven to be very successful in many breeding programs. Our black Charolais x Angus bulls are gaining traction in traditional black commercial herds as the calves present with a bit more vigor with the 1/4 Charolais influence but still able to maintain Angus characteristics for marketing purposes. We have seen some great success's with these bulls which are relatively new on the market.

All Animals purchased in the sale come with the Rosedale 12 month guarantee for fertility and structure. We stand behind the animals we sell and you can be assured when purchasing from Rosedale the quality is guaranteed. We are a family owned and managed business and we take a lot of pride, passion and care into what we do. Supplementary information and pictures of all lots will be available on [www.rosedalecharolais.com.au](http://www.rosedalecharolais.com.au) as well as Rosedale's Auctionsplus sale page. Inspections are welcome at any time.

Michael, Jen and James Millner





## CARCASE TRIAL SUCCESS

### NSW BEEF SPECTACULAR

For the 10th year in a row we entered the NSW Beef Spectacular with very pleasing results claiming 3 teams in the top 10.

A team from Rosedale Livestock finished 4th overall out of 90 teams whilst MJ Millner finished 7th and 8th overall with Rosedale Blood steers. The Rosedale team also finished 3rd in the weight gain section of the competition.

### RAS BEEF CHALLENGE

Rosedale genetics performed very successfully in the 2023 RAS Beef challenge taking out both Reserve and Champion Team in the Domestic section of the competition. The steers were fed for 70 Days before going to Coles for processing. Rosedale also took out the most profitable team as well as the trophy for feedlot performance.

In the 100 Day export section of the competition Millner Ag won the eating quality award for the highest indexing team as well as the carcass grid award for their Charolais x Angus steers.

Our teams also received two RAS Silver medals for outstanding individual carcasses.



### MERRIWA WOOLWORTHS CARCASS TRIAL

In 2023 the Merriwa Carcass Trial recommenced again and we supported it with some Charolais/Angus teams. The trial is successfully run on the Gill families's Alexander Downs Feedlot and cattle are fed on an 80 Day program prior to being processed for Woolworths. A team of Rosedale Blacks (brothers to the bulls in this sale) won the weight gain section of the competition. They beat 73 other teams in the trial with a weight gain of 2.49kg/day over 80 days.



## GENETIC INVESTMENT at ROSEDALE

In 2023 we crossed the ditch to New Zealand and inspected the Silverstream and Hemingford herds, arguably the two best herds in the country. It had been five years since our previous visit and we were impressed at the progression of polled Charolais breeding in that time. The New Zealand beef industry is based predominantly on pasture based systems so a lot of their production goals align with ours.

We found two sires of note that we have brought exclusively back to Australia and look forward to the first progeny this coming spring. The two sires are Silverstream Springston (pictured) and Hemingford Rough Justice.

Springston was the bull with the highest fat score out of the entire Silverstream draft. He ranked highly for weight gain and EMA. In addition to this he is very sound, a great type and is also homozygous polled.

Rough Justice is a deep, thick and fleshy bull who is breeding very well for Hemingford. He combines power with well rounded carcass traits.



# SALE INFORMATION

## ROSEDALE SALE BULL EBV'S

Rosedale has been a member of Breedplan for over 35 years. This has helped assist us to consistently retain and source external genetics that have enabled us to produce the types of cattle you see in our paddocks today.

Genetic gain in growth rates has always been a priority of ours, but we understand sensible calving ease and birthweights need to be maintained. With our own commercial herd of 1000 British bred cows, we are very familiar with the benefits our Charolais bulls are delivering in a crossbreeding situation.

The graphs shown are a good 'measuring stick' as to where our sale bulls sit as a group compared to the Australian Charolais breed average.

Although we understand that EBV's are not everything we believe they do help to illustrate the types of bulls we are aiming to produce. We submit large amounts of meaningful data each year to breedplan to help ensure the information is as accurate as it can be.

## VISUAL ASSESSMENT

When choosing bulls we recommend using a combination of EBVs, raw data and visual assessment. Visual assessment is essential to assess physical and structural soundness and is a reasonable indicator of health and temperament.

EBV's are a tool that will help you to make more "educated" decisions when you are choosing breeding stock. Do your homework well before the sale when you have plenty of time and set some parameters for your EBVs that fall within your market requirements, to narrow down potential purchases.

Use this "suitable list" of bulls and spend time looking and assessing the physical characteristics that you require.

## CARING FOR YOUR NEW BULL

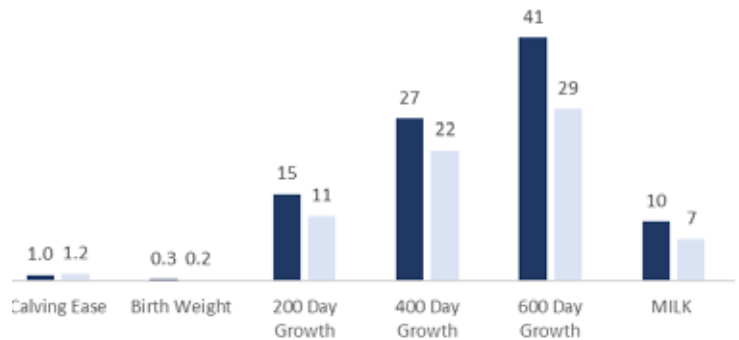
Always be considerate to your bulls and handle them with respect and kindness. Handle them quietly, walk them rather than rushing them, treat them with care and in a gentle manner and they will do likewise.

A bull leaving Rosedale is leaving the security of a large mob and will arrive in a strange environment at the purchaser's property. Unload him and make sure he has a steer or cow as a companion straight away if you can't put him out into your bull mob immediately.

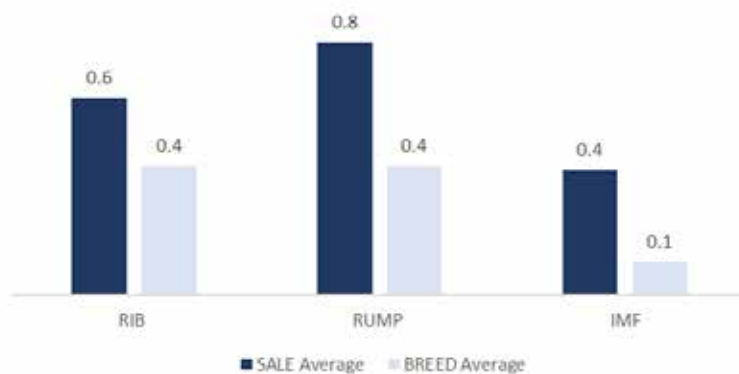
A young bull can move in with older bulls and settle well, but remember, being the youngest he will get the last of any feed available because of the pecking order. The paddock needs to be reasonably large so he can keep away from the others and find adequate feed. Young bulls are still growing fast and need enough feed to maintain their growth pattern and be able to settle the cows quickly and efficiently.

Rosedale bulls are used to being handled by stockmen on motor bikes and have been mustered with dogs. Most of the fences are electrified and the bulls treat them with respect.

### PRODUCTION EBV'S



### CARCASE QUALITY EBV'S



# SALE INFORMATION



**INSPECTION:** cattle inspections are welcome at any time prior to the sale by arrangement with the vendor. Cattle will be yarded into pens by 9am sale day.

**MORNING TEA & LUNCH:** Will be available all day. Please stay for a drink following the sale.

**LOCATION:** (map inside back cover)

1km out of Blayney on the Orange Road, turn left into Brown's Creek Road. Continue for 5kms and you will see "Rosedale Charolais Stud" on the left. Follow gravel road for 2kms.

**HEALTH:** All bulls catalogued have been semen tested and examined for structural soundness by Dr. John Sullivan. All of our cattle receive 7in1 vaccinations at 4 months of age, then 6 weeks later and an annual booster. They were drenched at weaning and periodically according to worm counts. Cattle were last drenched with Cydenctin Platinum together with a 7in1 in April. The sale bulls have been vaccinated for Pestivirus (BVDV) as well as tested negative.

**RAW DATA:** All bulls will be scanned prior to the sale for eye muscle area (EMA), rump and rib fat, marbling (IMF%) as well as sale weight and scrotal measurements. Supplementary sheet available on the day and on the Rosedale website, along with photos of all the lots.

**ROSEDALE'S 12 MONTH GUARANTEE:** All stock have been evaluated for structural soundness and fertility. To the best of our knowledge the bulls are in sound working order at the time of the sale. Any claim against the breeding ability or a structural breakdown of any animal must be made in writing and accompanied by a Veterinary Certificate within 12 months of the sale date. Any animal failing to breed may be either replaced with an animal of similar value or credit made available to the value of the purchase price, minus salvage value, for use at a future Rosedale sale. The purchaser will be responsible for any costs incurred.

**DELIVERY:** A delivery instruction slip must be completed and signed. Stock awaiting delivery will be held free of charge - all care will be taken, but absolutely no responsibility will be accepted for any injury or loss occasioned during, as a consequence of, or in relation to any holding.

This year we will deliver all stock purchased at the sale to anywhere in Australia for a flat rate of \$150 per head, please talk to Elders about this when completing delivery slip.

**INSURANCE:** Ownership passes at the fall of the hammer. An insurance representative will be in attendance on sale day.

**TELEPHONE LINK-UP:** Mobile telephones will be available. Please arrange with the vendor or agent to ensure a line.

**AUCTIONS PLUS:** Our sale is conducted live on line in real time and will be interfaced on Auctions Plus with the physical auction that is being conducted. A computer is used to bring the on-site bid price to the internet screen for remote bidders to observe. Bidders can bid on computers at their location and the bid is immediately transferred to the auction barn and relayed to the auctioneer. Bidding is only available if registered with Auctions Plus. You must register on-line to their website [www.auctionsplus.com.au](http://www.auctionsplus.com.au) - at least 24 hours prior to the sale. For first time users of Auctions Plus we recommend you register as soon as possible and become familiar with the site. The staff in Sydney are very helpful and happy to guide you through it.

For more information contact:- Auctions Plus - (02) 9262 4222

**AGENTS REBATE:** A 1% rebate will be offered to outside agents on the condition that a written introduction is received 48 hours prior to the sale and settles on their clients behalf within 7 days. (This clause will be strictly adhered to.) Only agents attending the sale in person will qualify for a 3% rebate also on the condition settlement occurs within 7 days on their clients behalf.

**TERMS AND CONDITIONS:** Terms of the sale are as per Conditions of Sale NSW Stud Stock.

**PLEASE NOTE:** It is unethical for anyone to promote, advertise or arrange the sale of any cattle, other than those in this sale on this sale premises.

**PRE SALE INSPECTIONS :** Private inspections are welcomed and encouraged at any time prior to the sale by appointment with Rosedale. Online Bidding and over the phone bidding is available on sale day for anyone unable to attend.

**SALE DAY SAFETY:** All sale bulls have been screened for temperament and are quiet to handle under normal circumstances. However, there are risks associated with cattle handling.

**Visitors enter the cattle pens at their own risk. Children must not enter pens.**

**DISCLAIMER:** People entering upon this property for any purpose whatsoever including attendance at cattle auctions do so at their own risk. We are not liable to you for any personal injury or death suffered by you and for theft loss or damage to any property caused or contributed to by us or by any other person whether caused or contributed to by or by negligence deliberate act or unlawful conduct. "We" or "us" or "our" refer to the owners their employees contractors and agents and each of them. While every care has been taken in compiling this catalogue to ensure accuracy of information supplied no responsibility is accepted for any errors which may have occurred.



# UNDERSTANDING BREEDPLAN EBV'S

All bulls in this sale have been managed under identical conditions from the point of weaning, therefore comparisons can be made between animals of similar age. Weights, scrotal measurements and scans of EMA and IMF% will be available on the day of sale to further aid your visual assessment. All registered Charolais bulls in this sale have been GENOMIC tested and are sire verified ensuring what you see in this catalogue is correct.

**Charolais Group Breedplan** is an advanced genetic evaluation system that provides a genetic description of Charolais cattle for a range of traits influencing fertility, growth and carcass performance. It provides predictions of the genetic merit of individual animals called Estimated Breeding Values (EBVs). EBVs are based on all the available pedigree and performance records provided by breeders in Australia and New Zealand, along with available overseas genetic information. EBVs are expressed in the units of measurement for each particular trait and are shown as +ive or -ive values. The Charolais breed average EBV for different traits changes over time as the breed makes genetic progress. The absolute value of any EBV is not critical, but rather the differences in EBVs between animals. Particular animals should be viewed as being "above or below breed average" for a particular trait. The averages for calves born in 2022 are shown below and at the bottom of the Performance Data Summary. Please note that each breed has their own EBV and cannot be compared across breeds. A low accuracy means there is more possibility of change in an EBV.

## How to use EBVs

To use these figures successfully you must first determine which characteristics you desire to breed for and then select the EBV which best supports these qualities. It is important to note that in a successful breeding programme it is advisable to maintain balance and not to direct effort toward gaining a single, higher EBV for one particular trait.

**Birth Weight** is a major factor in calving difficulty. Use this EBV to select against birth weight if calving is a problem. The lower the EBV the lighter the calves are expected to be at birth.

**200 Day Growth and Milk** is of particular interest to those targeting high weight gains at an early age to supply to the Domestic and Restaurant trade. Milk should be emphasized if the bull is being used to breed replacement progeny.

**400 and 600 Day Growth** indicates animals with superior weight gains from 12 months to 2 years of age, which would optimize profits in the domestic to Jap Ox markets.

**Accuracy (Acc.%)** provides an indication of the reliability of an EBV. As more performance information becomes available on an animal, its progeny and relatives, the accuracy of its EBVs for particular traits increases. The higher the accuracy the less chance the figure for each EBV will vary.

**Index Values** are reported as EBVs, in units of relative earning capacity (\$'s) for a given market. They reflect both the short-term profit generated by a sire through the sale of his progeny, and the longer-term profit generated by his daughters in a self-replacing cow herd. A selection index combines the EBVs with economic information (costs and returns) for specific market and production systems to rank animals based on relative profit values. Note that different types of animals can give similar profit values, so consideration should be given to both the index and the component EBVs when selecting animals for a particular production system.

**Domestic Index(\$)** Estimates the genetic differences between animals in net profitability per cow joined for an example commercial herd with a British cow base targeting grass-finished production for the domestic trade. This Index assumes pasture grown & finished steers weighing 430kgs (240kg HSCW and 6mm P8 fat) at 12 months. Daughters are retained or sold for breeding therefore maternal traits are of importance. In response to industry feedback, positive emphasis has been placed on finishing ability.

**Export Index(\$)** Estimates the genetic differences between animals in net profitability per cow joined for an example commercial herd with a British cow base targeting the production of steers for export markets. This Index assumes pasture grown & finished steers weighing 700kg (380kg HSCW and 9mm P8 fat) at 29 months. Daughters are retained or sold for breeding therefore maternal traits are of importance. In response to industry feedback, positive emphasis has been placed on finishing ability.

**Scrotal Size** is an indicator of the bull's fertility. A 2 year old bull with 34cm is regarded as satisfactory by the Society.

Average Group Breedplan EBV's for 2022 born calves																	
Charolais	Calve ease direct (%)	Calve ease dtrs (%)	Gest length (days)	Birth Wt (kg)	200 Day Wt (kg)	400 Day Wt (kg)	600 Day Wt (kg)	Mat Cow Wt (kg)	Milk		Scr Size (cm)	Carc Wt (kg)	Eye mscl area (cm <sup>2</sup> )	Rib fat (mm)	Rump fat (mm)	Retail beef yield (%)	IMF (%)
EBV	+1.2	+0.5	-2.6	+0.2	+11	+22	+29	+29	+7		+1.0	+18	+1.5	+0.4	+0.4	+0.0	+0.1
	<b>\$ Index Value</b>											+\$23		+\$36			



# PERFORMANCE DATA SUMMARY



Lot	Calving Ease	Birth Weight	200 Day Growth	400 Day Growth	600 Day Growth	Milk	Eye Muscle Area	Rib Fat	Rump Fat	IMF
1	4.6	0.1	11	19	28	6	1.4	0.4	0.4	0.1
2	8.7	-1.2	12	24	33	12	0.2	-0.3	-0.3	0.1
3	8.1	-1.1	22	36	51	10	0.6	1.6	2.4	0
4	7.7	-1.6	20	40	57	17	-1	1.7	2	0.2
5	3	0	13	33	43	12	2.7	0.8	1.2	0.3
6	-1	1.8	22	48	74	11	3	0.4	0.6	0.7
7	0.3	0.6	17	28	44	8	0.8	0.7	0.7	0.5
8	-3.8	2.9	23	44	74	10	0.6	0	0.2	1.2
9	-0.6	1	23	36	59	10	3.2	0.5	0.4	-0.1
10	4.5	-0.3	13	25	32	7	0.5	1.1	1.5	0.8
11	5.8	-0.6	6	7	13	11	0.6	1	1.3	0.4
12	3.9	0.8	19	29	45	6	0.7	0.9	1	0.7
13	3.1	-0.1	5	13	25	15	2.1	0.1	-0.3	-0.3
14	1.7	-1.2	24	39	56	15	0.6	2.5	3	0.1
15	-7.5	1.8	18	24	39	-1	0.7	0.7	1.4	1.0
16	-1.3	-0.1	20	34	60	8	2.6	1.1	1.2	0.1
17	-2	0.6	14	23	41	12	2.2	0.2	-0.1	-0.4
18	-6.4	1.5	18	33	59	11	1.4	0.3	0.1	0.5
19	-2.4	1	14	30	45	13	1.9	1	1.3	0.2
20	6.4	-2.4	19	34	46	20	1.5	1.2	1.4	0.0
21	1.6	0	19	31	47	12	0.9	1.2	1.8	1.0
22	-5.4	0.9	16	26	42	6	1.6	2.1	3.2	1.0
23	-2.9	2.2	14	28	44	4	0.8	0.7	1	0.3
24	-1.1	0.7	27	43	61	8	1	1.4	2	1.1
25	-3.6	1.3	19	33	44	2	1.5	2.2	2.8	1.0
26	5.3	0.9	14	22	37	7	0.2	0.1	0	0.5
27	1.9	-0.1	16	38	48	12	3	-0.3	-0.3	0.4
28	5.9	-0.8	9	11	15	8	0.2	1.1	1.3	0.6
29	5.4	0.4	6	4	17	13	0.1	0.5	0.7	0.6
30	0	0.7	21	26	51	11	0.8	0.8	1.2	0.7
31	-7	0.8	19	36	57	14	1.3	1.3	1.9	0.9
32	-3.2	1.4	20	37	61	7	2.3	0.2	0.1	0.3
33	-3.7	0.6	17	27	47	10	1	-0.1	-0.2	0.6
34	9	0.2	11	20	23	10	1.1	0.8	1	0.2
35	1.4	0.3	14	28	47	15	0	0.8	1.1	-0.1
36	-3.6	1.5	13	22	35	6	0.9	2.3	3	1.2
37	5.9	-0.2	10	13	24	8	-0.1	1.1	1.5	0.6
38	1.6	0.1	13	31	39	10	0.4	-1	-1.4	0.1
39	-8	1.7	16	35	54	12	3	0.8	1.3	0.7
40	5.8	-0.7	12	26	37	12	1.3	0.9	1.2	0.2
41	5.5	-0.5	12	14	22	13	1.3	-0.3	-0.6	0.4
42	0.8	0.8	12	31	45	9	0.9	-1	-1.5	-0.4
43	3.9	-0.6	11	30	38	14	0	-0.1	-0.2	0.3
44	-4	1.8	21	28	44	5	2.6	1.5	2.2	0.7
45	2.6	0.1	5	16	22	10	0.2	-0.5	-0.7	-0.3
46	5.9	-0.8	3	13	24	8	-0.2	-0.5	-0.5	0.4
47	1.6	0.2	7	24	32	11	-0.3	0.1	0	0
48	8.6	-2	9	19	12	21	1.2	1.2	1.3	0.1
49	-9.2	2.1	21	30	47	5	1	0.7	1.1	0.6
50	-4.7	0.7	15	27	43	6	1.8	0.1	0.3	0.7
51	-1.6	1.1	11	33	47	15	1.3	-0.2	-0.3	0.3
52	0.5	0.6	17	40	52	13	1.3	-0.6	-0.9	-0.5
53	2.9	0	10	30	39	15	1.4	0.4	0.6	0.3
54	7.2	0.1	8	12	23	7	0.8	-0.4	-0.6	-0.2
55	7.4	-1.0	9	16	19	7	0.4	0.7	0.9	0.7
56	-0.7	1.5	17	29	44	5	0.2	0.9	1.2	0.8
57	-4.6	0.6	16	33	53	9	1.9	-0.2	-0.4	0.5
58	-0.2	-1.4	9	22	21	8	0.6	0.8	1	0.1

### Breed average EBV's for 2022 born calves

EBV	Calving Ease	Birth Weight	200 Day Growth	400 Day Growth	600 Day Growth	Milk	Eye Muscle Area	Rib Fat	Rump Fat	IMF
	+1.2	+0.2	+11	+22	+29	+7	+1.5	+0.4	+0.4	+0.1

Represents top 25% or better of Charolais Breed



# CHAROLAIS SIRES

## ROSEDALE MAVERICK (AI) (ET) (RF)

Born: 21/07/2016

Society ID: MRM299E

Sire: **ROSEDALE DEALER (P)**  
 PALMGROVE STANDOUT (P)  
 GUNNADOO YUPPY (P)  
 GUNNADOO CINDY (P)

Dam: **ROSEDALE CANDY G304 (AI) (ET) (P) (R/F)**  
 MINNIE-VALE DEPUTY (P)  
 ROSEDALE BUTTERSCOTCH Y47 (P) (RF)  
 ROSEDALE BUTTERSCOTCH V150 (P)  
 LANGS ERIC THE RED (P)  
 HARVIE JAGER (P)  
 HARVIE MISS FRANCIS



Sire appeal, red factor and homozygous polled - Maverick is one of the best bulls we have produced in recent times. The bulls and females in this sale are yet again fantastic. Maverick's strike rate for producing quality is as good as we have seen. Earlier maturity pattern, excellent IMF and fantastic skin and structure.

Charolais Group Breedplan EBV's - March, 2020								
DIR	DTRS	GL	BWT	200	400	600	MWT	
+7.6	+5.1	-1.8	-0.7	+10	+19	+30	+20	
63%	45%	63%	92%	84%	87%	85%	71%	
MILK	SS	CWT	EMA	RIB	RMP	RBY	IMF	
+8	+1.2	+16	+1.3	+0.9	+1.1	-0.6	+0.5	
67%	68%	73%	61%	69%	69%	62%	61%	
Index \$ Value	Domestic (\$)				Export (\$)			
	+\$18				+\$37			

## ROSEDALE QUARTERMASTER (P)

Born: 09/09/2019

Society ID: MRQ125E

Sire: **PALMGROVE MANDATE (AI) (P)**  
 PALMGROVE AMBUSH (P)  
 PALMGROVE CARBINE (P)  
 PALMGROVE IDEAL  
 RANGAN PARK RIO BRAVO (AI) (ET) (P)  
 PALMGROVE DIGNA 194 (P)  
 PALMGROVE DIGNA 159

Dam: **ROSEDALE POPPY K151 (P)**  
 PINAY (P)  
 PALMGROVE EXPO (P)  
 PALMGROVE ESTELLA 130  
 ROSEDALE ZINGER (P)  
 ROSEDALE UNPOPPED D55 (P)  
 DOWNUNDER UNPOPPED



A bull sold at our 2021 sale that we have retained semen in and used extensively. Quartermaster is leading performance bull complemented by breed leading carcass data. It's very rare to find a bull in the top 3% for marbling that also can mix it with the best in terms of growth.

Charolais Group Breedplan EBV's - March, 2020								
DIR	DTRS	GL	BWT	200	400	600	MWT	
-4.3	+4.3	-4.7	+1.5	+17	+34	+58	+56	
53%	56%	82%	79%	72%	92%	92%	79%	
MILK	SS	CWT	EMA	RIB	RMP	RBY	IMF	
+4	+2.4	+28	+1.6	-0.9	-0.9	+0.5	+1.1	
50%	68%	63%	68%	80%	79%	71%	70%	
Index \$ Value	Domestic (\$)				Export (\$)			
	+\$26				+\$39			

## ROSEDALE PREMIER (AI) (P)

Born: 1/08/2018

Society ID: MRP197E

Sire: **SILVERSTREAM LANDMARK**  
 SILVERSTREAM BRUMBY (P)  
 SILVERSTREAM EVOLUTION (P)  
 SILVERSTREAM GLOSSY S120  
 NECESSAIRE

Dam: **ROSEDALE GOLDEN GIRL K6 (P)**  
 MERRIDALE FARAH F14  
 MERRIDALE TASMAN  
 PARINGA NOVOTEL  
 ROSEDALE DONOTELLO (P)  
 ROSEDALE REBECCA A38 (P)  
 MINNIE VALE DEPUTY (P)  
 ROSEDALE GOLDEN GIRL A34  
 ROSEDALE GOLDEN GIRL 2



A lovely thick and fleshy, yet powerful son we bred by the successful Silverstream Landmark sire. This draft represents some of Premier's best and they are very commercially focused animals with grunt. Trait leader 200 and 400 Day Growth.

Charolais Group Breedplan EBV's - March, 2020								
DIR	DTRS	GL	BWT	200	400	600	MWT	
-5.5	-6.3	-1.3	+1.5	+22	+39	+65	+68	
61%	45%	77%	91%	75%	78%	74%	70%	
MILK	SS	CWT	EMA	RIB	RMP	RBY	IMF	
+10	+0.7	+34	+2.2	-0.3	-0.9	+0.5	+0.2	
55%	79%	72%	60%	69%	68%	65%	55%	
Index \$ Value	Domestic (\$)				Export (\$)			
	+\$34				+\$37			



## ASCOT ROCKSTAR (P)

**Born:** 05/06/2020

**Society ID:** JAJR139E

ROSEDALE FAIRLANE (P)

**Sire: ROSEDALE LUMPSUM (P)**

LHD MISS CIGARSON (P0)

LT RIO BRAVO

**Dam: ASCOT G162 (P)**

ROSEDALE REBECCA Y7 (P)



An excellent son of Rosedale Lump Sum, and a bull we have admired since seeing him as a yearling. After a failed attempt to purchase the bull for ourselves (due to a technological malfunction) Jim kindly sent us some semen. We are very pleased with his calves, who are growthy yet soft with plenty of carcass.

Charolais Group Breedplan EBV's - March, 2020								
DIR	DTRS	GL	BWT	200	400	600	MWT	
8.2	-6.5	-6.9	-0.8	+18	+35	+53	+43	
73%	45%	94%	94%	87%	88%	87%	74%	
MILK	SS	CWT	EMA	RIB	RMP	RBY	IMF	
+14	+2.6	23	+0.1	1.9	+3.1	-2.0	.08	
67%	91%	81%	60%	74%	73%	74%	60%	
Index \$ Value				Domestic (\$)		Export (\$)		
				+\$ 15		+\$ 50		

## ROSEDALE QUAMBONE (P)

**Born:** 29/08/2019

**Society ID:** MRQ128E

PALGROVE AMBUSH (P)

PALGROVE CARBINE (P)

PALGROVE IDEAL

**Sire: PALGROVE MANDATE (AI) (P)**

RANGAN PARK RIO BRAVO (AI) (ET) (P)

PALGROVE DIGNA 194 (P)

PALGROVE DIGNA 159

PARINGA NOVOTEL (P)

ROSEDALE FAIRLANE (P)

ROSEDALE HONOR A118

**Dam: ROSEDALE CONFIDENCE L10 (P)**

ROSEDALE WILLIE (P)

ROSEDALE CONFIDENCE B10 (P)

ROSEDALE CONFIDENCE W166 (P)



A homebred sire we have successfully used in the stud. Some of his sons are of outstanding quality. A rare bull in the Charolais breed that ranks in the top 1% for IMF as well as the top 10% for 200 Day growth. A very commercially focused bull out of a strong cow line. (Pictured above is Quambone's sire - Palgrove Mandate)

Charolais Group Breedplan EBV's - March, 2020								
DIR	DTRS	GL	BWT	200	400	600	MWT	
-4.3	-4.3	-1.2	+1.4	+19	+35	+50	+67	
72%	58%	63%	96%	89%	94%	92%	82%	
MILK	SS	CWT	EMA	RIB	RMP	RBY	IMF	
+9	+1.8	+25	+1.4	+1.6	+2.5	-1.4	+1.4	
68%	89%	81%	70%	83%	82%	72%	70%	
Index \$ Value				Domestic (\$)		Export (\$)		
				+\$ 30		+\$ 46		

## TURNBULLS DUTY FREE (AI) (ET) (P)

**Born:** 31/01/2016

**Society ID:** OACM1309E

HEJ MAGNUM 26R (P)

PLEASANT DAWN MAGNUM 56T (P) (R/F)

PLEASANT DAWN REDDY 51E (P)

**Sire: PLEASANT DAWN MVP (P)**

LT RIO BLANCO 1234 P (P)

PLEASANT DAWN RIO 216 (P)

PLEASANT DAWN FAY 15L (P)

PLEASANT DAWN MAXIMUM (P)

**Dam: CTP MISS GOOGLE (P)**

RTP MISS SELECT (P)



HOMOZYGOUS POLLED - One of the newest Canadian bulls to hit the Australian Charolais market and Rosedale secured exclusive breeding rights in partnership with Agri gene and some fellow leading breeders across Australia. Currently ranks in the top 1% for 200 and 400 Day growth. Smooth shouldered bulls that power on.

Charolais Group Breedplan EBV's - March, 2020								
DIR	DTRS	GL	BWT	200	400	600	MWT	
+0.8	0.9	-10.3	-1.0	+33	+57	+79	+64	
51%	40%	53%	76%	65%	68%	69%	63%	
MILK	SS	CWT	EMA	RIB	RMP	RBY	IMF	
+5	+4.4	+46	+1.1	+1.5	+1.1	+1.1	-0.8	
49%	55%	58%	45%	55%	56%	51%	45%	
Index \$ Value				Domestic (\$)		Export (\$)		
				+\$ 56		+\$ 127		



# CHAROLAIS SIRES

## ROSEDALE PONTING (P)

**Born:** 03/08/2018

**Society ID:** MRP107E

FERNVALE TRAPPER  
ROSEDALE DARWIN (P)  
HARVIE MS MOLSON 53M (P)  
**Sire: ROSEDALE H168 (P)**

PARINGA NOVOTEL (P)  
ROSEDALE BEATRIX D148 (P)  
ROSEDALE BEATRIX Z105 (P)

PINAY (P)  
PALGROVE EXPO (P)  
PARINGA FASTRACK (AI) (P)  
**Dam: ROSEDALE EMPRESS J167 (P)**

FERNVALE TRAPPER  
ROSEDALE EMPRESS B188 (P)  
ROSEDALE EMPRESS S66 (P)



A bull that has been used in the stud and commercial herd with great success over the years. By the infamous H168 out of a strong Expo cow this bull has bred really well and has some stunning sons in this draft. Big topped yet still laying on the fat cover. A trait leader for Growth and EMA. (pictured above at 18 months).

### Charolais Group Breedplan EBV's - March, 2020

	DIR	DTRS	GL	BWT	200	400	600	MWT
	-5.7	+0.4	-0.3	+1.9	<b>+18</b>	<b>+37</b>	<b>+52</b>	+55
	68%	56%	68%	77%	79%	75%	75%	71%
MILK	SS	CWT	EMA	RIB	RMP	RBY	IMF	
	+14	+3.0	+30	+3.1	+0.6	+0.9	+0.4	+0.2
	59%	59%	76%	56%	96%	63%	70%	55%
Index \$ Value	Domestic (\$)				Export (\$)			
	+\$ 32				+\$ 49			

## KENMERE POMPEII (P)

**Born:** 25/03/2018

**Society ID:** MCSP30E

LT EASY BLEND (P)  
KENMERE RADIATOR (AI) (P)  
MINNIE VALE RADIANCE (P)  
**Sire: KENMERE HIRICHIO**

LT WESTERN SPUR (P)  
KENMERE DIAMOND SPUR D8 (P)  
MINNIE VALE QUEENIE (P)  
LT ASSERTION (P)

LT BLUEGRASS (P)  
LT PEARLS BREEZE (P)  
**Dam: KENMERE TOURMALINE D23 (AI) (P)**

SUMMER KOSCIOSKO  
KENMERE TOURMALINE  
BALLEGARA SHERBET 2 (AI) (ET) (P)



HOMOZYGOUS POLLED - sons coming through from the sale topping bull purchased from Kenmere 2020. Pompeii was the 2019 Charolais National Junior champion Bull and seems to be breeding visually appealing progeny with growth.

### Charolais Group Breedplan EBV's - March, 2020

	DIR	DTRS	GL	BWT	200	400	600	MWT
	-2.7	+10	-3.1	+1.1	+7	+31	+42	+30
	57%	43%	75%	90%	79%	81%	79%	67%
MILK	SS	CWT	EMA	RIB	RMP	RBY	IMF	
	+7	+1.4	+27	+0.6	-0.8	-0.6	+0.5	-0.1
	52%	70%	61%	52%	57%	56%	54%	60%
Index \$ Value	Domestic (\$)				Export (\$)			
	+\$ 26				+\$ 56			





## 1 ROSEDALE TRITON (RF) (P)

**Sire:** ROSEDALE MAVERICK (AI) (ET) (P) (R/F)  
 GUNNADOO YUPPY (P)  
 ROSEDALE DEALER (AI) (P) (R/F)  
 ROSEDALE BUTTERSCOTCH Y47 (P) (R/F)  
 HARVIE JAEGAR (P) (R/F)  
 ROSEDALE CANDY G304 (AI) (ET) (P) (R/F)  
 ROSEDALE CANDY Q140 (P)

**Dam:** ROSEDALE DAFFODIL H223 (RF) (P)  
 PINAY (P)  
 PALGROVE EXPO (P)  
 PALGROVE ESTELLA (AI) (P)  
 DSK YABBA  
 ROSEDALE DAFFODIL E5 (P)  
 ROSEDALE DAFFODIL 5 (AI) (P)

**Born:** 12/5/2022

**Society ID:** MR22T8E

Cross into profit

**Purchaser**

\$

Index \$ Value	
Domestic (\$)	Northern Maternal (\$)
\$+24	+\$48

Charolais Group Breedplan EBV's					
	Calving ease	Birth weight	200 day growth	400 day growth	600 Day Growth
EBV	+4.6	+0.1	+11	+19	+28
ACC	37%	70%	58%	63%	60%

SIRE VERIFIED - BPA & MYO FREE

Milk	CWT	EMA	Rib	Rump	IMF %
+6	+14	+1.4	+0.4	+0.4	+0.0
35%	51%	44%	48%	47%	44%

**Comments - HOMOZYGOUS POLLED**

**TOP 25% CALVING EASE**

An easy doing red factor Maverick son to start-up this years draft. Ticks all the boxes as far as we are concerned, great type, structurally correct and an exceptional temperament. Combine that with his natural thickness and an ideal maturity pattern.

## 2 ROSEDALE TYPHOON (P) (RF)

**Sire:** ROSEDALE MAVERICK (AI) (ET) (P) (R/F)  
 GUNNADOO YUPPY (P)  
 ROSEDALE DEALER (AI) (P) (R/F)  
 ROSEDALE BUTTERSCOTCH Y47 (P) (R/F)  
 HARVIE JAEGAR (P) (R/F)  
 ROSEDALE CANDY G304 (AI) (ET) (P) (R/F)  
 ROSEDALE CANDY Q140 (P)

**Dam:** ROSEDALE RUBY K48 (P)  
 NWMSU DOC SILVER (P)  
 ASCOT DOC SILVER G100 (AI) (ET) (P)  
 PARINGA RIO BRAVO E310 (ET) (P)  
 ROSEDALE DONOTELLO (P)  
 ROSEDALE RUBY H8 (AI) (P)  
 ROSEDALE RUBY A218 (P)

**Born:** 27/08/2022

**Society ID:** MR22T38E

Cross into profit

**Purchaser**

\$

Index \$ Value	
Domestic (\$)	Nth Maternal (\$)
\$33	\$54

Charolais Group Breedplan EBV's					
	Calving ease	Birth weight	200 day growth	400 day growth	600 Day Growth
EBV	+8.7	-1.2	+12	+24	+33
ACC	49%	76%	70%	67%	65%

SIRE VERIFIED - BPA & MYO FREE

Milk	CWT	EMA	Rib	Rump	IMF %
+12	+16	+0.2	-0.3	-0.3	+0.1
50%	58%	52%	56%	55%	52%

**Comments - HOMOZYGOUS POLLED**

**Top 20% Birth weight & Milk, top 15% Calving Ease.**

A bull of high calibre - low birth weight and terrific growth for age. One of the top 3 heaviest bulls at the 400 Day weigh in. This bull carries himself extremely well and has that extra bit of class. Typhoon is one of the best Mavericks in a high quality draft. A strong maternal pedigree positions him as a stud sire contender.



# CHAROLAIS BULLS

## 3 ROSEDALE TNT (AI) (P)

Born: 13/08/2022

Society ID: MR22T83E

ROSEDALE FAIRLANE (P)  
ROSEDALE LUMPSUM (P)  
ROSEDALE BEATRIX G231 (P)  
**Sire: ASCOT ROCKSTAR (P)**  
LT RIO BRAVO  
ASCOT G162 (P)  
ROSEDALE REBECCA Y7 P)

ROSEDALE FAIRLANE (P)  
ROSEDALE KAVIAR (P)  
NET E58 (AI) (P)  
**Dam: ROSEDALE RUBY M254 (P)**  
ASHWOOD PARK BACARDI (P)  
ROSEDALE RUBY G78 (P)  
ROSEDALE RUBY A46 (P)



Purchaser	
\$	

Index \$ Value					
Domestic (\$)			Nth Maternal (\$)		
\$+39			+\$66		
Charolais Group Breedplan EBV's					
	Calving ease	Birth weight	200 day growth	400 day growth	600 Day Growth
EBV	+8.1	-1.1	+22	+36	+51
ACC	45%	73%	65%	68%	64%
SIRE VERIFIED - BPA & MYO FREE					
Milk	CWT	EMA	Rib	Rump	IMF %
+10	+26	+0.6	+1.6	+2.4	+0.0
47%	58%	52%	58%	57%	51%

### Comments - HOMOZYGOUS POLLED

**Top 5% 200 Day, Top 10% 400 & 600 Day, Rib & Rump Fat, Top 15% CE and Top 20% Bwt**

An outstanding young bull by Ascot Rockstar who sold for \$60K in 2022. TNT is sire material combining explosive growth, terrific carcass numbers and a bombproof temperament. TNT has grunt but also the important ability to lay on the fat cover.

## 4 ROSEDALE TAX FREE (AI) (P)

Born: 12/08/2022

Society ID: MR22T65E

PLEASANT DAWN MAGNUM (P) (RF)  
PLEASANT DAWN MVP (P)  
PLEASANT DAWN RIO (P)  
**Sire: TURNBULLS DUTY FREE (P)**  
PLEASANT DAWN MAXIMUM (P)  
CTP MISS GOOGLE (P)  
RTP MISS SELECT (P)

LT EASY BLEND (P) (RF)  
ROSEDALE FIRST CLASS (P)  
ROSEDALE CINDERELLA D6 (P)  
**Sire: ROSEDALE GEORGETTE J114 (P)**  
DSK YABBA  
ROSEDALE GEORGETTE E172 (P)  
ROSEDALE GEORGETTE B122 (P)



Purchaser	
\$	

Index \$ Value					
Domestic (\$)			Nth Maternal (\$)		
\$48			\$86		
Charolais Group Breedplan EBV's					
	Calving ease	Birth weight	200 day growth	400 day growth	600 Day Growth
EBV	+7.7	-1.6	+20	+40	+57
ACC	49%	71%	62%	64%	60%
SIRE VERIFIED - BPA & MYO FREE					
Milk	CWT	EMA	Rib	Rump	IMF %
+17	+27	-1.0	+1.7	+2.0	+0.2
43%	58%	45%	53%	53%	45%

### Comments - HOMOZYGOUS POLLED

**Top 15% Calving Ease, Birth weight and Rump fat Top 5% 200, 400 600 Day Growth. Top 15 Rib Fat.**

A bull very impressive in both the flesh and on paper, the heaviest Charolais bull at 400 days. A short gestation length and sky rocketing growth traits in combination with Fats in the top 10% of the breed. Depth, thickness and sire appeal, a great bull - 3 ticks.



<b>5</b>	<b>ROSEDALE TAWNY OAK (RF) (P)</b>	<b>Born:</b>	8/09/2022
		<b>Society ID:</b>	MR22T86E

ROSEDALE DARWIN (P)  
ROSEDALE H168 (P)  
ROSEDALE BEATRIX D148 (P)  
**Sire: ROSEDALE PONTING (P)**  
PALGROVE EXPO (P)  
ROSEDALE EMPRESS J167 (P)  
ROSEDALE EMPRESS B188 (P)

PALGROVE CHARM (AI) (ET) (P)  
PALGROVE HALLMARK (AI) (P) (R/F)  
PALGROVE ALYSSA 47 (P) (R/F)  
**Sire: ROSEDALE BUTTERSCOTCH N290 (ET) (P) (R/F)**  
GUNNADOO YUPPY (P)  
ROSEDALE BUTTERSCOTCH F68 (P) (R/F)  
ROSEDALE BUTTERSCOTCH Y47 (P)

Cross into profit

**Charolais**

Index \$ Value					
Domestic (\$)	Nth Maternal (\$)				
\$+35	+\$55				
Charolais Group Breedplan EBV's					
	Calving ease	Birth weight	200 day growth	400 day growth	600 Day Growth
EBV	+3.0	0.0	+13	+33	+43
ACC	41%	72%	62%	65%	64%
Milk					
	CWT	EMA	Rib	Rump	IMF %
	+12	+28	+2.7	+0.8	0.3
	43%	53%	48%	52%	47%

Comments - POLLED
<b>Top 15% 400 Day, Milk, Top 25% 600 Day, Top 10% EMA</b>
A powerful red Factor sire backed by some strong breeding. Excelling in all areas, this bull deserves thorough inspection and has always looked the part. One of the highest EMA's and weights at the 400 Day capture despite giving away a month to some of his contemporaries.

<b>Purchaser</b>	
\$	

<b>6</b>	<b>ROSEDALE TOP CLASS (AI) (P)</b>	<b>Born:</b>	16/08/2022
		<b>Society ID:</b>	MR22T73E

PALGROVE CARBINE (P)  
PALGROVE MANDATE (AI) (P)  
PALGROVE  
**Sire: ROSEDALE QUARTERMASTER (P)**  
PALGROVE EXPO (P)  
ROSEDALE POPPY K151 (P)  
ROSEDALE UNPOPPED D55 (P)

PARINGA NOVOTEL (P)  
ROSEDALE FAIRLANE (P)  
ROSEDALE HONOR A118  
**Dam: ROSEDALE BEATRIX K175 (P)**  
MINNIE VALE DEPUTY (P)  
ROSEDALE BEATRIX A122 (P)  
ROSEDALE BEATRIX W88

Cross into profit

**Charolais**

Index \$ Value						
Domestic (\$)	Nth Maternal (\$)					
\$48	\$82					
Charolais Group Breedplan EBV's						
	Calving ease	Birth weight	200 day growth	400 day growth	600 Day Growth	
EBV	-1.0	+1.8	+22	+48	+69	
ACC	40%	73%	63%	64%	60%	
SIRE VERIFIED - BPA & MYO FREE						
	Milk	CWT	EMA	Rib	Rump	IMF %
	+11	+41	+3.0	+0.4	+0.6	+0.7
	50%	51%	36%	45%	45%	38%

Comments - POLLED
<b>Top 1% 400, 600 Day, Top 5% 200 Day, EMA, Top 10% IMF</b>
A commercially appealing sire excelling in a number of areas with outstanding growth numbers and statistics in combination with top end carcass attributes. A modern day charolais bull who brings a lot to the table.

<b>Purchaser</b>	
\$	



# CHAROLAIS BULLS

## 7 ROSEDALE THUNDER (P)

Born: 28/08/2022

Society ID: MR22T33E

GUNNADOO YUPPY (P)  
 ROSEDALE DEALER (AI) (P) (R/F)  
 ROSEDALE BUTTERSCOTCH Y47 (P) (R/F)  
**Sire: ROSEDALE MAVERICK (AI) (ET) (P) (R/F)**  
 HARVIE JAEGAR (P) (R/F)  
 ROSEDALE CANDY G304 (AI) (ET) (P) (R/F)  
 ROSEDALE CANDY Q140 (P)

PINAY  
 PALGROVE EXPO (P)  
 PALGROVE EXTELLA 130 (P)  
**Dam: ROSEDALE RUBY K166**  
 PARINGA NOVOTEL (P)  
 ROSEDALE RUBY G175 (P)  
 ROSEDALE RUBY Z98 (P)



Purchaser

\$

### Index \$ Value

Domestic (\$)	Nth Maternal (\$)
\$+25	+\$43

### Charolais Group Breedplan EBV's

	Calving ease	Birth weight	200 day growth	400 day growth	600 Day Growth
EBV	+0.3	+0.6	+17	+29	+44
ACC	45%	63%	63%	66%	58%

### SIRE VERIFIED - BPA & MYO FREE

Milk	CWT	EMA	Rib	Rump	IMF %
+8	+17	+0.8	+0.7	+0.7	+0.5
42%	54%	39%	53%	53%	40%

### Comments - HOMOZYGOUS POLLED

**Top 15% 200 Day, Top 25% 400 & 600 Day, Top 20% IMF**

Another top class Maverick bull out of an exceptional Expo cow who always has bulls up the top end of the draft. A full brother to Thunder sold for \$22,000 in our 2022 sale. Fleshy, growth for age and a terrific type who will leave behind some impressive progeny. Wonderful combination of growth and carcass traits.

## 8 ROSEDALE TRUMPCARD (AI) (P)

Born: 18/08/2022

Society ID: MR22T89E

PALGROVE CARBINE (P)  
 PALGROVE MANDATE (AI) (P)  
 PALGROVE  
**Sire: ROSEDALE QUARTERMASTER (P)**  
 PALGROVE EXPO (P)  
 ROSEDALE POPPY K151 (P)  
 ROSEDALE UNPOPPED D55 (P)

LT LONG DISTANCE (P)  
 ROSEDALE LE TAN (AI) (P) (RF)  
 ROSEDALE BUTTERSCOTCH H127 (P) (R/F)  
**Dam: ROSEDALE HONOR P168 (P)**  
 ROSEDALE H168 (P)  
 ROSEDALE HONOR M85 (P)  
 ROSEDALE HONOR A118



Purchaser

\$

### Index \$ Value

Domestic (\$)	Nth Maternal (\$)
\$38	\$63

### Charolais Group Breedplan EBV's

	Calving ease	Birth weight	200 day growth	400 day growth	600 Day Growth
EBV	-3.8	+2.9	+23	+44	+74
ACC	40%	69%	60%	58%	53%

### SIRE VERIFIED - BPA & MYO FREE

Milk	CWT	EMA	Rib	Rump	IMF %
+10	+33	+0.6	0.0	+0.2	+1.2
51%	58%	45%	53%	53%	45%

### Comments - HOMOZYGOUS POLLED

**Top 15% 400 Day Growth, Top 20% 200 & 600 Day Growth, IMF**

A very rare bull here ranking in the top 2% of the breed for all growth traits as well as marbling. Trumpcard recorded the highest IMF score we have ever had at 6.4% as a yearling in November last year. Commercially focused and ahead of his time.





## 9 ROSEDALE TUXEDO (P)

**Born:** 23/08/2022  
**Society ID:** MR22T136E

SILVERSTREAM EVOLUTION (P)  
 SILVERSTREAM LANDMARK (P)  
 MERRIDALE FARAH  
**Sire: ROSEDALE PREMIER (AI) (P)**  
 ROSEDALE DONOTELLO (P)  
 ROSEDALE GOLDEN GIRL K6 (AI) (ET) (P)  
 ROSEDALE GOLDEN GIRL A34 (P)

ROSEDALE FAIRLANE (P)  
 ROSEDALE KAVIAR (P)  
 ROSEDALE NET E58 (AI) (P)  
**Dam: ROSEDALE HONOR N230 (P)**  
 CANOONA CAVALERO  
 ROSEDALE HONOR F222 (P)  
 ROSEDALE HONOR W30 (P)



<b>Purchaser</b>	
\$	

Index \$ Value					
Domestic (\$)			Nth Maternal (\$)		
+\$39			+\$62		
Charolais Group Breedplan EBV's					
	Calving ease	Birth weight	200 day growth	400 day growth	600 Day Growth
EBV	-0.6	+1.0	+23	+36	+59
ACC	41%	72%	62%	65%	61%
SIRE VERIFIED - BPA & MYO FREE					
Milk	CWT	EMA	Rib	Rump	IMF %
+10	+32	+3.2	+05	+0.4	-0.1
40%	53%	47%	53%	53%	48%

**Comments - HOMOZYGOUS POLLED**  
**Top 5% 200 & 600 Day, EMA, Top 10% 400 Day Growth, Top 20% MILK**  
 This bull is built like a tank and is a powerhouse son of Rosedale Premier. A very commercially focused bull with positive fats, in combination with impressive growth traits in the top 5% of the breed and a stack of EMA.

## 10 ROSEDALE TIE THE KNOT (AI) (P) (RF)

**Born:** 27/09/2022  
**Society ID:** MR22T227E

PALGROVE CARBINE (P)  
 PALGROVE MANDATE (AI) (P)  
 PALGROVE  
**Sire: ROSEDALE QUANDARY (P)**  
 ROSEDALE FIRST CLASS (P)  
 ROSEDALE RUBY K227 (P)  
 ROSEDALE RUBY E143 (P)

LT LEDGER (P)  
 AIRLIE KOWTOW (P)  
 AIRLIE IONA (P)  
**Dam: ROSEDALE POPPY M289 (P)**  
 PALGROVE EXPO (P)  
 ROSEDALE POPPY K151 (P)  
 ROSEDALE UNPOPPED D55 (P)



<b>Purchaser</b>	
\$	

Index \$ Value					
Domestic (\$)			Nth Maternal (\$)		
\$25			\$36		
Charolais Group Breedplan EBV's					
	Calving ease	Birth weight	200 day growth	400 day growth	600 Day Growth
EBV	+4.5	-0.3	+13	+25	+32
ACC	49%	73%	63%	69%	65%
SIRE VERIFIED - BPA & MYO FREE					
Milk	CWT	EMA	Rib	Rump	IMF %
+7	+14	+0.5	+1.1	+1.5	+0.8
51%	58%	45%	53%	53%	45%

**Comments - HOMOZYGOUS POLLED**  
**Top 25% CE, rib fat, Top 20% Rump Fat, Top 10% IMF**  
 A clean shouldered free moving and commercially focused red factor son by Quandary. We love the smoothness and carcass qualities of this bull ranking in the top 10% for IMF. A bull we think would excel in a grassfed program due to his strong performance in combination with the key ingredient of fattening ability.



# CHAROLAIS BULLS

## 11 ROSEDALE TUCKER (P)

Born: 05/08/2022

Society ID: MR22T53E

GUNNADOO YUPPY (P)  
 ROSEDALE DEALER (AI) (P) (R/F)  
 ROSEDALE BUTTERSCOTCH Y47 (P) (R/F)  
**Sire: ROSEDALE MAVERICK (AI) (ET) (P) (R/F)**  
 HARVIE JAEGAR (P) (R/F)  
 ROSEDALE CANDY G304 (AI) (ET) (P) (R/F)  
 ROSEDALE CANDY Q140 (P)

ROSEDALE DARWIN (P)  
 ROSEDALE H168 (P)  
 ROSEDALE BEATRIX D148 (P)  
**Dam: ROSEDALE RUBY M28 (P)**  
 PARINGA NOVOTEL (P)  
 ROSEDALE RUBY F17 (P)  
 ROSEDALE RUBY W154 (P)



Purchaser

\$

### Index \$ Value

Domestic (\$)	Nth Maternal (\$)
\$+10	+\$21

### Charolais Group Breedplan EBV's

	Calving ease	Birth weight	200 day growth	400 day growth	600 Day Growth
EBV	+5.8	-0.8	+6	+7	+13
ACC	45%	63%	61%	68%	63%

### SIRE VERIFIED - BPA & MYO FREE

Milk	CWT	EMA	Rib	Rump	IMF %
+11	+3	+0.6	+1.0	+1.3	+0.4
51%	57%	44%	53%	53%	44%

### Comments

**Top 10% Calving Ease, Birth weight, 200 Day growth, Rib Fat, Dom \$ Ind. Top 5% Mat Index.**

A very neat but moderate easy doing sire, oozing softness and well positioned to produce progeny that will fatten easily on grass. Easy calving with terrific carcass qualities and super quiet.

## 12 ROSEDALE TYCOON (R/F) (P)

Born: 25/08/2022

Society ID: MR22T25E

GUNNADOO YUPPY (P)  
 ROSEDALE DEALER (AI) (P) (R/F)  
 ROSEDALE BUTTERSCOTCH Y47 (P) (R/F)  
**Sire: ROSEDALE MAVERICK (AI) (ET) (P) (R/F)**  
 HARVIE JAEGAR (P) (R/F)  
 ROSEDALE CANDY G304 (AI) (ET) (P) (R/F)  
 ROSEDALE CANDY Q140 (P)

SVY PIONEER  
 SVY PILGRIM (P)  
 HFCC FRENCGKISS 919J  
**Dam: ROSEDALE CANDY J25 (P)**  
 DSK YABBA DABBA DO  
 ROSEDALE CANDY C36 (P)  
 ROSEDALE CANDY Z34 (P)



Purchaser

\$

### Index \$ Value

Domestic (\$)	Nth Maternal (\$)
\$29	\$58

### Charolais Group Breedplan EBV's

	Calving ease	Birth weight	200 day growth	400 day growth	600 Day Growth
EBV	+3.9	+0.8	+19	+29	+45
ACC	49%	76%	69%	70%	65%

### SIRE VERIFIED - MYO FREE

Milk	CWT	EMA	Rib	Rump	IMF %
+6	+18	+0.7	+0.7	+0.1	+0.7
51%	58%	45%	53%	53%	53%

### Comments - HOMOZYGOUS POLLED

**Top 10 % 200 Day & IMF, Top 15% 600 Day, Top 25% 400 Day**

Another eye catching Maverick son with a fantastic phenotype. Naturally thick and classy this bull will leave behind some magnificent calves with loads of depth, shape and appeal. His dam Candy J25 is a terrific cow and is very consistent.



## 13 ROSEDALE TAIPAN (P) (R/F)

Born: 07/08/2022

Society ID: MR22T34E

GUNNADOO YUPPY (P)  
ROSEDALE DEALER (AI) (P) (R/F)  
ROSEDALE BUTTERSCOTCH Y47 (P) (R/F)  
**Sire: ROSEDALE MAVERICK (AI) (ET) (P) (R/F)**  
HARVIE JAEGAR (P) (R/F)  
ROSEDALE CANDY G304 (AI) (ET) (P) (R/F)  
ROSEDALE CANDY Q140 (P)

SVY FREEDOM (P)  
GERRARD MONTEZUMA (P)  
PALGROVE DIGNA (P)  
**Dam: ROSEDALE GOLDEN GIRL K2 (AI) (ET) (P)**  
MINNIE VALE DEPUTY (P)  
ROSEDALE GOLDEN GIRL A 34 (P)  
ROSEDALE GOLDEN GIRL 2

Cross into profit



Purchaser

\$

Index \$ Value					
Domestic (\$)			Nth Maternal (\$)		
+\$18			+\$31		
Charolais Group Breedplan EBV's					
	Calving ease	Birth weight	200 day growth	400 day growth	600 Day Growth
EBV	+3.1	-0.1	+5	+13	+25
ACC	44%	71%	59%	62%	58%
SIRE VERIFIED - MYO FREE					
Milk	CWT	EMA	Rib	Rump	IMF %
+15	13	+2.1	+0.1	-0.3	-0.3
42%	57%	46%	53%	53%	46%

### Comments - HOMOZYGOUS POLLED

#### Top 5% Milk, Top 25% EMA

A very commercially focused bull, moderate in stature yet very thick and packing a lot of red meat. Taipan represents all we want in our bulls with a tremendous hindquarter and ample softness. This is a bull who will breed some very attractive weaners.

## 14 ROSEDALE TAX HAVEN (AI) (P)

Born: 18/08/2022

Society ID: MR22T78E

PLEASANT DAWN MAGNUM (P) (RF)  
PLEASANT DAWN MVP (P)  
PLEASANT DAWN RIO (P)  
**Sire: TURNBULLS DUTY FREE (P)**  
PLEASANT DAWN MAXIMUM (P)  
CTP MISS GOOGLE (P)  
RTP MISS SELECT (P)

SVY PILGRIM (P)  
ROSEDALE HARRY (P)  
ROSEDALE NICKY X7 (P)  
**Dam: ROSEDALE LUCY L156 (P)**  
PARINGA NOVOTEL (P)  
ROSEDALE LUCY H120 (P)  
ROSEDALE LUCY A210 (P)

Cross into profit



Purchaser

\$

Index \$ Value					
Domestic (\$)			Nth Maternal (\$)		
+\$37			+\$83		
Charolais Group Breedplan EBV's					
	Calving ease	Birth weight	200 day growth	400 day growth	600 Day Growth
EBV	+1.7	-1.2	+24	+39	+56
ACC	43%	73%	64%	67%	63%
SIRE VERIFIED - MYO & BPA FREE					
Milk	CWT	EMA	Rib	Rump	IMF %
+15	+27	+0.6	+2.5	+3.0	+0.1
46%	58%	51%	53%	53%	50%

### Comments - HOMOZYGOUS POLLED

#### Top 20% BWT, Top 1% 200 Day Growth, Top 5% 400 & 600, Top 5% Rib & RUMP Fat, MILK

Another tremendous son of Turnbull's Duty Free. Absolute curve bender ranking in the top 1% for 200 Day growth and top 20% for birth weight. You have to admire the length and volume of this bull and he is supported by some exceptional carcass data.



# CHAROLAIS BULLS

## 15 ROSEDALE TASTY (P)

Born: 10/08/2022

Society ID: MR22T144E

Sire: **ROSEDALE QUAMBONE (P)**  
 PALGROVE CARBINE (P)  
 PALGROVE MANDATE (P)  
 PALGROVE DIGNA 194 (P)  
 ROSEDALE FAIRLANE (P)  
 ROSEDALE CONFIDENCE L10 (P)  
 ROSEDALE CONFIDENCE B10 (P)

Dam: **ROSEDALE DAINTE G149 (P)**  
 PINAY (P)  
 PALGROVE EXPO (P)  
 PALGROVE ESTELLA 130 (AI) (P)  
 GUNNADOO YUPPY (P)  
 ROSEDALE DAINTE B187 (P)  
 ROSEDALE DAINTE S62 (P)



Purchaser	
\$	

Index \$ Value					
Domestic (\$)			Nth Maternal (\$)		
\$+15			+\$22		
Charolais Group Breedplan EBV's					
	Calving ease	Birth weight	200 day growth	400 day growth	600 Day Growth
EBV	-7.5	+1.8	+18	+24	+39
ACC	43%	73%	63%	66%	62%
SIRE VERIFIED - MYO & BPA FREE					
Milk	CWT	EMA	Rib	Rump	IMF %
-1	+16	+0.7	+0.7	+1.4	+1.0
42%	57%	48%	53%	53%	47%

**Comments - HOMOZYGOUS POLLED**  
**Top 5% IMF, Top 10% 200 Day, Top 25% 600 Day, RUMP fat**  
 A very eye appealing bull here with lovely softness and terrific shape. This easy doing Quambone son has the growth, carcass and style to be a really useful sire in a variety of scenarios. Top 5% for IMF yet still strong in all other areas making him a great bull and he typifies what we are trying to achieve in our program.

## 16 ROSEDALE TYSON (P)

Born: 02/08/2022

Society ID: MR22T115E

Sire: **ROSEDALE PREMIER (AI) (P)**  
 SILVERSTREAM EVOLUTION (P)  
 SILVERSTREAM LANDMARK (P)  
 MERRIDALE FARAH  
 ROSEDALE DONOTELLO (P)  
 ROSEDALE GOLDEN GIRL K6 (AI) (ET) (P)  
 ROSEDALE GOLDEN GIRL A34 (P)

Dam: **ROSEDALE HUSSY H124 (P)**  
 NOVOTEL  
 PARINGA NOVOTEL (P)  
 PARINGA FASTRAC (P)  
 ROSEDALE WILLIE  
 ROSEDALE HUSSY B105 (P)  
 ROSEDALE HUSSY X21 (P)



Purchaser	
\$	

Index \$ Value					
Domestic (\$)			Nth Maternal (\$)		
\$33			\$66		
Charolais Group Breedplan EBV's					
	Calving ease	Birth weight	200 day growth	400 day growth	600 Day Growth
EBV	-1.3	-0.1	+20	+34	+60
ACC	43%	73%	63%	68%	64%
SIRE VERIFIED - BPA & MYO FREE					
Milk	CWT	EMA	Rib	Rump	IMF %
+8	+31	+2.6	+1.1	+1.2	+0.1
43%	57%	52%	53%	52%	49%

**Comments - HOMOZYGOUS POLLED**  
**Top 5% 200 & 600 Day, CWT, Top 15% 400 Day, Top 10% EMA**  
 A big strong bull that is athletic and carcass focused. He is going to be a big bull and throw some fast growing progeny with strong bone and muscle yet still that ability to lay on the fat cover. This bull is bred for profitability.



## 17 ROSEDALE TORNADO (P)

Born: 08/08/2022

Society ID: MR22T137E

SILVERSTREAM EVOLUTION (P)  
SILVERSTREAM LANDMARK (P)  
MERRIDALE FARAH  
**Sire: ROSEDALE PREMIER (AI) (P)**  
ROSEDALE DONOTELLO (P)  
ROSEDALE GOLDEN GIRL K6 (AI) (ET) (P)  
ROSEDALE GOLDEN GIRL A34 (P)

ROSEDALE DARWIN (P)  
ROSEDALE H168 (P)  
ROSEDALE BEATRIX D148 (P)  
**Dam: ROSEDALE VIOLET N249 (P) (RF)**  
CANOONA CAVALERO (P)  
ROSEDALE VIOLET G92 (P)  
ROSEDALE VIOLET V38 (P)

Cross into profit



Purchaser

\$

Index \$ Value					
Domestic (\$)			Nth Maternal (\$)		
\$+22			+\$25		
Charolais Group Breedplan EBV's					
	Calving ease	Birth weight	200 day growth	400 day growth	600 Day Growth
EBV	-2.0	+0.6	+14	+23	+41
ACC	40%	71%	62%	64%	60%
SIRE VERIFIED - BPA & MYO FREE					
Milk	CWT	EMA	Rib	Rump	IMF %
+12	+25	+2.2	+0.2	-0.1	-0.4
42%	52%	47%	53%	53%	47%

### Comments - POLLED

#### Top 25% 600 day, EMA, CWT, Top 15% MILK

Typical of the Premier sons this is another strong and thick sire who continues to develop with age. A strong top line and length of body will pass through into his progeny ensuring excellent weight for age and well built weaners. Tornado whilst being a strongly made bull, still contains that softness of skin that we like to see.

## 18 ROSEDALE TEQUILA (P)

Born: 14/08/2022

Society ID: MR22T135E

SILVERSTREAM EVOLUTION (P)  
SILVERSTREAM LANDMARK (P)  
MERRIDALE FARAH  
**Sire: ROSEDALE PREMIER (AI) (P)**  
ROSEDALE DONOTELLO (P)  
ROSEDALE GOLDEN GIRL K6 (AI) (ET) (P)  
ROSEDALE GOLDEN GIRL A34 (P)

ASCOT GOVERNOR GENERAL (AI) (P)  
ASCOT KNIGHTLY (P)  
GOBONGO GEORGINA D156 (P)  
**Dam: ROSEDALE RUBY N251 (P)**  
LT EASY BLEND (P)  
ROSEDALE RUBY F30 (P)  
ROSEDALE RUBY C77 (P)

Cross into profit



Purchaser

\$

Index \$ Value					
Domestic (\$)			Nth Maternal (\$)		
\$26			\$29		
Charolais Group Breedplan EBV's					
	Calving ease	Birth weight	200 day growth	400 day growth	600 Day Growth
EBV	-6.4	+1.5	+18	+33	+59
ACC	41%	72%	62%	65%	60%
SIRE VERIFIED - BPA & MYO FREE					
Milk	CWT	EMA	Rib	Rump	IMF %
+11	+29	+1.4	+0.3	+0.1	+0.5
44%	58%	45%	53%	53%	48%

### Comments - HOMOZYGOUS POLLED

#### Top 10% 200 & 600 Day, Top 15% 400 Day, MILK, IMF, CWT

A strapping bull with in-built dehorners who puts to bed any obsolete rumors about polled bulls lacking grunt. This is a bull who will fire up any program adding loads of volume and scope to his progeny. Nice to see the marbling ability coming through in a bull with this much power. These Premier sons are top shelf!



# CHAROLAIS BULLS

## 19 ROSEDALE TAKE DOWN (P)

Born: 13/09/2022

Society ID: MR22T95E

ROSEDALE DARWIN (P)  
ROSEDALE H168 (P)  
ROSEDALE BEATRIX D148 (P)  
**Sire: ROSEDALE PONTING (P)**  
PALGROVE EXPO (P)  
ROSEDALE EMPRESS J167 (P)  
ROSEDALE EMPRESS B188 (P)

ROSEDALE DARWIN (P)  
ROSEDALE H168 (P)  
ROSEDALE BEATRIX D148 (P)  
**Dam: ROSEDALE GOLDEN GIRL P89 (P)**  
ROSEDALE ZINGER (P)  
ROSEDALE GOLDEN GIRL E205 (P)  
ROSEDALE GOLDEN GIRL V105 (P)



Purchaser

\$

### Index \$ Value

Domestic (\$)	Nth Maternal (\$)
+\$27	+\$49

### Charolais Group Breedplan EBV's

	Calving ease	Birth weight	200 day growth	400 day growth	600 Day Growth
EBV	-2.4	+1.0	+14	+30	+45
ACC	44%	74%	64%	68%	64%

### SIRE VERIFIED - BPA & MYO FREE

Milk	CWT	EMA	Rib	Rump	IMF %
+13	+25	+1.9	+1.0	+1.3	+0.2
44%	53%	48%	53%	53%	47%

### Comments - POLLED

**Top 20% 400, 600 Day, CWT Top 10% Milk, Top 20% Rib and Rump Fats**

An easy doing carcass focused Ponting son who will appeal to a variety of commercial programs. Impressive weight for age and strong across all fronts for meat quality. I really admire this bull for his moderation, depth of body and fleshing ability.

## 20 ROSEDALE TAX DEDUCTION (AI) (P)

Born: 19/08/2022

Society ID: MR22T81E

PLEASANT DAWN MAGNUM (P) (RF)  
PLEASANT DAWN MVP (P)  
PLEASANT DAWN RIO (P)  
**Sire: TURNBULLS DUTY FREE (P)**  
PLEASANT DAWN MAXIMUM (P)  
CTP MISS GOOGLE (P)  
RTP MISS SELECT (P)

PARINGA NOVOTEL (P)  
ROSEDALE FAIRLANE (P)  
ROSEDALE HONOR A118  
**Sire: ROSEDALE BOBBIN L225 (P)**  
PALGROVE COACH (P)  
ROSEDALE BOBBIN F72 (P)  
ROSEDALE BOBBIN C23 (P)



Purchaser

\$

### Index \$ Value

Domestic (\$)	Nth Maternal (\$)
\$37	\$72

### Charolais Group Breedplan EBV's

	Calving ease	Birth weight	200 day growth	400 day growth	600 Day Growth
EBV	+6.4	-2.4	+19	+34	+46
ACC	48%	76%	71%	71%	69%

### SIRE VERIFIED - BPA & MYO FREE

Milk	CWT	EMA	Rib	Rump	IMF %
+20	+27	+1.5	+1.2	+1.4	+0.0
55%	55%	53%	63%	61%	53%

### Comments - HOMOZYGOUS POLLED

**TOP 1% MILK TOP 10% 200, 400 DAY, TOP 20% RIB & RUMP FAT, CWT, 600 DAY.** A high quality lot by Turnbulls Duty Free who has produced some excellent bulls in this draft. This is a low birth wt and low gestation length bull with exciting growth EBV's accompanied by complete carcass numbers. An attractive prospect with an unreal milk figure.



## 21 ROSEDALE TAMBA (P)

Born: 20/09/2022

Society ID: MR22T153E

**Sire: ROSEDALE QUAMBONE (P)**  
 PALGROVE CARBINE (P)  
 PALGROVE MANDATE (P)  
 PALGROVE DIGNA 194 (P)  
 ROSEDALE FAIRLANE (P)  
 ROSEDALE CONFIDENCE L10 (P)  
 ROSEDALE CONFIDENCE B10 (P)

**Dam: ROSEDALE BEATRIX N211 (P)**  
 ROSEDALE FAIRLANE (P)  
 ROSEDALE KAVIAR (P)  
 ROSEDALE NET E58 (AI) (P)  
 ROSEDALE FAIRLANE (P)  
 ROSEDALE BEATRIX K25 (P)  
 ROSEDALE BEATRIX E244 (P)



**Charolais Group Breedplan EBV's - Sire Verified - BPA & MYO FREE**

DIR	GL	BWT	200	400	600	MILK	DOM
+1.6	-3.1	0.0	+19	+31	+47	+12	+\$31
48%	52%	74%	66%	69%	66%	49%	
SS	CWT	EMA	RIB	RMP	RBY	IMF	MAT
+1.3	+25	+0.9	+1.2	+1.8	-1.2	+1.0	+\$46
75%	58%	54%	59%	58%	57%	52%	

Purchaser: \$

**Top 10% 200 Day, Top 20% 400 & 600 Day, Milk, Rib&Rump Fat, Top 5% IMF**

Tamba has some of the most balanced figures in the whole draft and his carcass qualities are very strong. Terrific growth for age in partnership with marbling in the top 5% of the breed is very pleasing to see in a bull that also looks the part. A complete package here.

## 22 ROSEDALE TENACIOUS (P)

Born: 13/08/2022

Society ID: MR22T145E

**Sire: ROSEDALE QUAMBONE (P)**  
 PALGROVE CARBINE (P)  
 PALGROVE MANDATE (P)  
 PALGROVE DIGNA 194 (P)  
 ROSEDALE FAIRLANE (P)  
 ROSEDALE CONFIDENCE L10 (P)  
 ROSEDALE CONFIDENCE B10 (P)

**Dam: ROSEDALE LUCY G199 (P)**  
 SVY PILGRIM (P)  
 ROSEDALE HARRY (P)  
 ROSEDALE CANDY C36 (P)  
 PALGROVE EXPO (P)  
 ROSEDALE LUCY (P)  
 ROSEDALE HIGHNESS X27 (AI) (P)



**Charolais Group Breedplan EBV's - SIRE VERIFIED - BPA & MYO FREE**

DIR	GL	BWT	200	400	600	MILK	DOM
-5.4	-2.5	+0.9	+16	+26	+42	+6	+\$20
43%	70%	72%	61%	66%	62%	40%	
SS	CWT	EMA	RIB	RMP	RBY	IMF	MAT
+2.0	+18	+1.6	+2.1	+3.2	-1.3	+1.0	+\$43
51%	54%	40%	47%	47%	44%	40%	

Purchaser: \$

**Top 5% IMF, Rib & Rump Fats, Top 20% 200 Day, Top 25% 600 Day**

Tenacious is an MSA focused bull excelling in all carcass areas. Some of the best IMF and fat scores in the draft as well as thickness across the top line with very strong growth attributes. A very commercially focused sire.

## 23 ROSEDALE TOSCANO (P) (R/F)

Born: 24/10/2022

Society ID: MR22T217E

**Sire: MINNIE-VALE QUIZMASTER (P) (R/F)**  
 SILVERSTREAM EVOLUTION (P)  
 PALGROVE JAGUAR (ET) (P)  
 PALGROVE LEONIE 23 (AI) (ET) (P)  
 MOONGOOL GOLD DUST (P)  
 MINNIE-VALE SONG L107 (P) (R/F)  
 MINNIE VALE SONG G40 (P)  
 MVX COUGAR HILL HANK  
 HIGH BLUFF HANK (P)

**Dam: ROSEDALE BEATRIX L55 (P)**  
 ROSEDALE CANDY C36 (P)  
 PARINGA NOVOTEL (P)  
 ROSEDALE BEATRIX H119 (P)  
 ROSEDALE BEATRIX A209 (P)



**Charolais Group Breedplan EBV's Sire Verified -**

DIR	GL	BWT	200	400	600	MILK	DOM
-2.9	-4.5	+2.2	+14	+28	+44	+4	\$22
49%	55%	73%	63%	69%	65%	51%	
SS	CWT	EMA	RIB	RMP	RBY	IMF	MAT
+0.9	+21	+0.8	+0.7	+1.0	-0.4	+0.3	\$38
54%	58%	45%	53%	53%	49%	45%	

Purchaser: \$

**Top 25% 400 & 600 Day.**

A slightly younger bull that continues to impress. This is a sire that packs in a lot of thickness and red meat in a moderate package. L55 is a deep sided easy doing cow who always grabs your eye. A lot of potential here.



# CHAROLAIS BULLS

## HEMINGFORD ROUGH JUSTICE

Born: 20/09/2020

Society ID: OANR150E



### Charolais Group Breedplan EBV's - SIRE VERIFIED - BPA & MYO FREE

	DIR	GL	BWT	200	400	600	MILK	DOM
	-5.4	-3.1	+1.6	+19	+40	+49	+8	+\$29
	42%	70%	75%	65%	67%	62%	42%	
SS	CWT	EMA	RIB	RMP	RBY	IMF	MAT	
	+1.6	+26	+1.1	+1.9	+2.3	-1.4	+0.7	+\$41
	51%	54%	40%	57%	55%	44%	49%	

### NEW SEMEN SIRE FOR ROSEDALE FROM NEW ZEALAND

Rough Justice is a new sire we are excited about. His first calves will be in late spring and we can't wait to see how he combines with our cows. He will be used heavily in our AI programs this year.

## 24 ROSEDALE TAURO (P)

Born: 07/09/2022

Society ID: MR22T164E

Sire: **ROSEDALE QUAMBONE (P)**  
 PALGROVE CARBINE (P)  
 PALGROVE MANDATE (P)  
 PALGROVE DIGNA 194 (P)  
 ROSEDALE FAIRLANE (P)  
 ROSEDALE CONFIDENCE L10 (P)  
 ROSEDALE CONFIDENCE B10 (P)

Dam: **ROSEDALE HONOR P193 (P)**  
 ROSEDALE FAIRLANE (P)  
 ROSEDALE KAVIAR (P)  
 ROSEDALE NET E58 (AI) (P)  
 PARINGA NOVOTEL (P)  
 ROSEDALE HONOR K183 (P)  
 ROSEDALE HONOR F169 (P)



### Charolais Group Breedplan EBV's - SIRE VERIFIED - BPA & MYO FREE

	DIR	GL	BWT	200	400	600	MILK	DOM
	-1.1	-1.0	+0.7	+27	+43	+61	+8	+\$39
	42%	70%	75%	65%	67%	62%	42%	
SS	CWT	EMA	RIB	RMP	RBY	IMF	MAT	
	+1.0	+31	+1.0	+1.4	+2.0	-1.4	+1.1	+\$49
	51%	54%	40%	57%	55%	44%	49%	

### HOMOZYGOUS POLLED, Top 1% 200, Top 5% 400 & 600 Day, IMF %, CWT, Top 15% Rib & Rump Fat

A quality bull who should not be overlooked. Second heaviest in the draft at the 400 day weigh in and also produced one of the highest IMF's at 5.6%.

## 25 ROSEDALE TRANSFORMER (P) (R/F)

Born: 10/10/2022

Society ID: MR22T222E

Sire: **MINNIE-VALE QUIZMASTER (P) (R/F)**  
 SILVERSTREAM EVOLUTION (P)  
 PALGROVE JAGUAR (ET) (P)  
 PALGROVE LEONIE 23 (AI) (ET) (P)  
 MOONGOOL GOLD DUST (P)  
 MINNIE-VALE SONG L107 (P) (R/F)  
 MINNIE VALE SONG G40 (P)  
 HARVIE REDEMPTION (P)  
 ASCOT GRAND REDEMPTION (P)  
 GOBONGO JULIETTE (AI) (P)

Dam: **ROSEDALE AMOUR M214 (P)**  
 SVY FREEDOM (P)  
 ROSEDALE AMOUR G43 (P)  
 ROSEDALE AMOUR D220 (P)



### Charolais Group Breedplan EBV's - SIRE VERIFIED

	DIR	GL	BWT	200	400	600	MILK	DOM
	-3.6	-1.5	+1.3	+19	+33	+44	+2	+\$27
	49%	55%	73%	63%	69%	65%	51%	
SS	CWT	EMA	RIB	RMP	RBY	IMF	MAT	
	+1.4	+22	+1.5	+2.2	+2.8	-1.4	+1.0	+\$54
	54%	58%	45%	53%	53%	49%	45%	

### Top 5% IMF, Rib & Rump, Top 10% 200 Day, Top 15% 400 & 600 Day

A classic Quizmaster son with thickness and depth of body. Very punchy yet moderately packaged with high end carcass data. An exceptional bull able to display softness, IMF and is one of the leaders in weight for age.





## 26 ROSEDALE THUNDERBIRD (P) (RF)

Born: 05/09/2022

Society ID: MR22T50E

GUNNADOO YUPPY (P)  
ROSEDALE DEALER (P) (R/F)  
ROSEDALE BUTTERSCOTCH Y47 (P) (R/F)  
**Sire: ROSEDALE MAVERICK (AI) (ET) (P)**  
HARVIE JAGER 65J PMC228759 (P)  
ROSEDALE CANDY G304E (AI) (ET) (P) (R/F)  
ROSEDALE CANDY Q140 (P)

ROSEDALE FAIRLANE (P)  
ROSEDALE KAVIAR (AI) (P)  
ROSEDALE NET E58 (P)  
**Dam: ROSEDALE CANDY M230 (P)**  
ROSEDALE ZINGER (P)  
ROSEDALE CANDY D187 (P)  
ROSEDALE CANDY W23



### Charolais Group Breedplan EBV's - SIRE VERIFIED - BPA & MYO FREE

DIR	GL	BWT	200	400	600	MILK	DOM
+5.3	-1.4	+0.9	+14	+22	+37	+7	+\$24
41%	48%	77%	69%	71%	64%	48%	
SS	CWT	EMA	RIB	RMP	RBY	IMF	MAT
+0.9	+14	+0.2	+0.1	+0.0	-0.4	+0.5	+\$39
51%	54%	39%	62%	60%	43%	53%	

Purchaser \$

### HOMOZYGOUS POLLED TOP 20% IMF, TOP 25% CED,

Thunderbird is phenotypically exceptional and ranks in the top 30% for 200 Day growth with a very good IMF. He is a soft bull with natural thickness, shape and balance. Will stand a strong inspection.

## 27 ROSEDALE THURSTON (P)

Born: 06/09/2022

Society ID: MR22T133E

SILVERSTREAM EVOLUTION (P)  
SILVERSTREAM LANDMARK (P)  
MERRIDALE FARAH  
**Sire: ROSEDALE PREMIER (AI) (P)**  
ROSEDALE DONOTELLO (P)  
ROSEDALE GOLDEN GIRL K6 (AI) (ET) (P)  
ROSEDALE GOLDEN GIRL A34 (P)

SVY PILGRIM (P)  
ROSEDALE HARRY (P)  
ROSEDALE CANDY C36 (P)  
**Dam: ROSEDALE CANDY N239 (P)**  
LT LEDGER (P)  
ROSEDALE CANDY J86 (AI) (P)  
ROSEDALE CANDY G213 (P)



### Charolais Group Breedplan EBV's - SIRE VERIFIED - MYO FREE

DIR	GL	BWT	200	400	600	MILK	DOM
+1.9	-1.2	-0.1	+16	+35	+48	+12	+\$40
43%	61%	74%	64%	66%	61%	45%	
SS	CWT	EMA	RIB	RMP	RBY	IMF	MAT
+1.3	+32	+3.0	-0.3	-0.3	+0.8	+0.4	+\$59
57%	53%	50%	60%	53%	52%	49%	

Purchaser \$

### TOP 20% 200 DAY & MLK, TOP 10% EMA, 400 & 600 DAY, TOP 25% IMF & RBV

Certainly a high yielding bull but also displays the ability to marble which can be rare to find. Thurston is a strong bull who is very commercially orientated and will produce some very punchy and stocky calves.

## 28 ROSEDALE TRADIE (P)

Born: 05/08/2021

Society ID: MR22T51E

GUNNADOO YUPPY (P)  
ROSEDALE DEALER (P) (R/F)  
ROSEDALE BUTTERSCOTCH Y47 (P) (R/F)  
**Sire: ROSEDALE MAVERICK (AI) (ET) (P)**  
HARVIE JAGER 65J PMC228759 (P)  
ROSEDALE CANDY G304E (AI) (ET) (P) (R/F)  
ROSEDALE CANDY Q140 (P)  
PALGROVE CHARM (AI) (ET) (P)  
PALGROVE HALLMARK (P) (RF)  
PALGROVE ALYSSA 47 (P)

**Dam: ROSEDALE RUBY (P)**  
GUNNADOO YUPPY (P)  
ROSEDALE BUTTERSCOTCH F68 (P) (RF)  
ROSEDALE BUTTERSCOTCH Y47 (P) (RF)



### Charolais Group Breedplan EBV's - SIRE VERIFIED - BPA & MYO FREE

DIR	GL	BWT	200	400	600	MILK	DOM
+2.6	-3.4	+0.3	+14	+31	+46	+9	+\$31
49%	55%	73%	63%	69%	65%	51%	
SS	CWT	EMA	RIB	RMP	RBY	IMF	MAT
+0.8	+26	+1.5	+0.0	+0.2	0.0	0.2	+\$38
54%	58%	45%	53%	53%	49%	45%	

Purchaser \$

### HOMOZYGOUS POLLED, Top 20% 600 Day Growth, Top 25% Milk, CWT

Yet again Maverick has produced the goods. A cracking red factor bull who is extremely well balanced with lovely soft skin. Good head carriage, tight sheathed with a terrific outlook.



# CHAROLAIS BULLS

## 29 ROSEDALE TIM TAM (P) (R/F)

Born: 26/08/2022  
Society ID: MR22T48E

GUNNADOO YUPPY (P)  
ROSEDALE DEALER (P) (R/F)  
ROSEDALE BUTTERSCOTCH Y47 (P) (R/F)  
**Sire: ROSEDALE MAVERICK (AI) (ET) (P)**  
HARVIE JAGER 65J PMC228759 (P)  
ROSEDALE CANDY G304E (AI) (ET) (P) (R/F)  
ROSEDALE CANDY Q140 (P)

HARVIE REDEMPTION (P) (R/F)  
ASCOT GRAND REDEMPTION  
GOBONGO JULIETTE (AI) (P)  
**Dam: ROSEDALE GERTY M135 (P)**  
REIDS ASSASSIN (P)  
ROSEDALE ARMOUR E186 (P)  
ROSEDALE ARMOUR B11 (P) (RF)



### Charolais Group Breedplan EBV's - SIRE VERIFIED - BPA & MYO FREE

DIR	GL	BWT	200	400	600	MILK	DOM
+5.4	-1.4	+0.4	+6	+4	+17	+13	+\$7
45%	51%	75%	68%	64%	60%	49%	
SS	CWT	EMA	RIB	RMP	RBY	IMF	MAT
+0.5	+0	+0.1	+0.5	+0.7	-0.7	+0.6	+\$11
60%	52%	46%	60%	58%	49%	52%	

Purchaser \$

**HOMOZYGOUS POLLED, Top 20% CED, Top 15% IMF, Top 10% Milk**

A lovely soft, thick and moderate bull in true Maverick style. These bulls are so easy doing and the maturity pattern is spot on for domestic production. Would also breed some lovely daughters to keep.

## 30 ROSEDALE TECHNICO (P)

Born: 16/10/2022  
Society ID: MR22T168E

PALGROVE CARBINE (P)  
PALGROVE MANDATE (P)  
PALGROVE DIGNA 194 (P)  
**Sire: ROSEDALE QUAMBONE (P)**  
ROSEDALE FAIRLANE (P)  
ROSEDALE CONFIDENCE L10 (P)  
ROSEDALE CONFIDENCE B10 (P)

ROSEDALE FAIRLANE (P)  
ROSEDALE LEADER (P)  
ROSEDALE RUBY C30 (P)  
**Dam: ROSEDALE RUBY P230 (AI) (P)**  
ROSEDALE H168  
ROSEDALE RUBY M28E (P)  
ROSEDALE RUBY F17 (P)



### Charolais Group Breedplan EBV's - Sire Verified

DIR	GL	BWT	200	400	600	MILK	DOM
+0.0	-1.5	+0.7	+21	+36	+51	+11	+\$32
47%	50%	74%	66%	69%	66%	50%	
SS	CWT	EMA	RIB	RMP	RBY	IMF	MAT
+1.3	+27	+0.8	+0.8	+1.2	-0.2	+0.7	+\$44
73%	50%	54%	59%	58%	47%	53%	

Purchaser \$

**Top 5% 200 Day, Top 10% 400, 600 Day, IMF, Top 15% Milk, CWT**

Fantastic bodied bull who is well muscled yet still retains plenty of softness. As to be expected by the Quambone progeny terrific growth rates matched up with terrific carcass scans.

## 31 ROSEDALE TSZYU (P)

Born: 29/08/2022  
Society ID: MR22T147E

PALGROVE CARBINE (P)  
PALGROVE MANDATE (P)  
PALGROVE DIGNA 194 (P)  
**Sire: ROSEDALE QUAMBONE (P)**  
ROSEDALE FAIRLANE (P)  
ROSEDALE CONFIDENCE L10 (P)  
ROSEDALE CONFIDENCE B10 (P)  
PALGROVE WISDOM (AI) (ET) (P)  
CANOONA CAVALERO (P)  
PALGROVE ESTELLA (AI) (P)

**Dam: ROSEDALE VIOLET J233 (P)**  
FERNVALE TRAPPER  
ROSEDALE VIOLET Z136 (P)  
ROSEDALE VIOLET 17 (P)



### Charolais Group Breedplan EBV's - SIRE VERIFIED - BPA & MYO FREE

DIR	GL	BWT	200	400	600	MILK	DOM
-7.0	-2.7	+0.8	+19	+36	+57	+14	\$28
49%	55%	73%	63%	69%	65%	51%	
SS	CWT	EMA	RIB	RMP	RBY	IMF	MAT
+1.8	+28	+1.3	+1.3	+1.9	-1.0	+0.9	\$47
54%	58%	45%	53%	53%	49%	45%	

Purchaser \$

**HOMOZYGOUS POLLED, Top 5% 600 Day, Milk, IMF, Top 10% 200, 400 Day Top 15% Rib & Rump Fat**

This is a classy long bull with extra growth and fantastic soft skin. TSZYU is a mobile bull and well supported by some impressive EBV growth data.



## 32 ROSEDALE TRAIL BLAZER (P)

Born: 25/10/2022

Society ID: MR22T126E

SILVERSTREAM EVOLUTION (P)  
SILVERSTREAM LANDMARK (P)  
MERRIDALE FARAH  
**Sire: ROSEDALE PREMIER (AI) (P)**  
ROSEDALE DONOTELLO (P)  
ROSEDALE GOLDEN GIRL K6 (AI) (ET) (P)  
ROSEDALE GOLDEN GIRL A34 (P)

SVY PILGRIM (P)  
ROSEDALE HARRY (P)  
ROSEDALE CANDY C36 (P)  
**Dam: ROSEDALE KRISTINA N194 (P)**  
PARINGA NOVOTEL  
ROSEDALE KRISTINA F85  
ROSEDALE KRISTINA Z110 (P)



Charolais Group Breedplan EBV's - SIRE VERIFIED - BPA & MYO FREE

DIR	GL	BWT	200	400	600	MILK	DOM
-3.2	-0.9	+1.4	+20	+37	+61	+7	+\$36
41%	70%	74%	64%	66%	62%	39%	
SS	CWT	EMA	RIB	RMP	RBY	IMF	MAT
+1.8	+33	+2.3	+0.2	+0.1	+0.4	+0.3	+\$43
51%	54%	50%	55%	54%	53%	49%	

Purchaser \$

**HOMOZYGOUS POLLED, Top 5% 200,400 & 600 Day, CWT, Top 20% EMA**

A big upstanding Premier son who will deliver extra volume and scale to his progeny. Excellent growth numbers as to be expected on a bull like this.

## 33 ROSEDALE TANK (P)

Born: 17/08/2022

Society ID: MR22T118E

SILVERSTREAM EVOLUTION (P)  
SILVERSTREAM LANDMARK (P)  
MERRIDALE FARAH  
**Sire: ROSEDALE PREMIER (AI) (P)**  
ROSEDALE DONOTELLO (P)  
ROSEDALE GOLDEN GIRL K6 (AI) (ET) (P)  
ROSEDALE GOLDEN GIRL A34 (P)

PARINGA NOVOTEL (P)  
ROSEDALE FAIRLANE (P)  
ROSEDALE HONOR A118  
**Dam: ROSEDALE NET L222 (P)**  
ROSEDALE ZINGER (P)  
ROSEDALE NET E42 (P)  
ROSEDALE NET X147 (P)



Charolais Group Breedplan EBV's - SIRE VERIFIED -

DIR	GL	BWT	200	400	600	MILK	DOM
-3.7	+0.4	+0.6	+17	+27	+47	+10	+\$23
42%	70%	75%	61%	66%	62%	40%	
SS	CWT	EMA	RIB	RMP	RBY	IMF	MAT
+0.4	+23	+1.0	-0.1	-0.2	-0.3	+0.6	+\$26
51%	54%	50%	47%	47%	44%	49%	

Purchaser \$

**Top 15% 200 Day, IMF, TOP 20% 600 DAY, MILK, TOP 25% CWT**

Another excellent Premier son who carries his extra length and volume so well. With a moderate birth and big growth spread this bull is definitely worth a look. Great IMF figure for a bull with this much horsepower,

## 34 ROSEDALE TOBLERONE (P)

Born: 13/08/2022

Society ID: MR22T54E

GUNNADOO YUPPY (P)  
ROSEDALE DEALER (P) (R/F)  
ROSEDALE BUTTERSCOTCH Y47 (P) (R/F)  
**Sire: ROSEDALE MAVERICK (AI) (ET) (P)**  
HARVIE JAGER 65J PMC228759 (P)  
ROSEDALE CANDY G304E (AI) (ET) (P) (R/F)  
ROSEDALE CANDY Q140 (P)  
ROSEDALE DARWIN (P)

ROSEDALE H168 (P)  
ROSEDALE BEATRIX D148 (P)  
**Dam: ROSEDALE RUBY M283 (P)**  
PARINGA NOVOTEL (P)  
ROSEDALE RUBY F10 (P)  
ROSEDALE RUBY Z211 (P) (R/F)



Charolais Group Breedplan EBV's - SIRE VERIFIED - BPA & MYO FREE

DIR	GL	BWT	200	400	600	MILK	DOM
+9.0	-0.3	-0.2	+11	+20	23	+10	\$23
46%	48%	74%	65%	69%	65%	48%	
SS	CWT	EMA	RIB	RMP	RBY	IMF	MAT
+1.7	+12	+1.1	+0.8	+1.0	-0.5	+0.2	\$42
54%	58%	45%	54%	53%	49%	49%	

Purchaser \$

**HOMOZYGOUS POLLED, Top 15% CED, Top 20% MILK,**

A calving ease bull with a good steady growth curve and good positive fats. A softer yet well rounded type of bull whose progeny will finish earlier than some.



# CHAROLAIS BULLS

## 35 ROSEDALE TOM PETTY (AI) (P) (RF)

Born: 26/08/2022  
Society ID: MR22T94E

ROSEDALE FAIRLANE (P)  
ROSEDALE LUMPSUM (P)  
ROSEDALE BEATRIX G231 (P)  
**Sire: ASCOT ROCKSTAR (P)**  
LT RIO BRAVO 3181 (P)  
ASCOT G162 (AI) ET (P)  
ROSEDALE REBECCA Y7 (P)  
  
ROSEDALE DEALER (R/F) (P)  
ROSEDALE MAVERICK (ET) (R/F) (P)  
ROSEDALE CANDY G304 (AI) (P) (RF)  
**Dam: ROSEDALE CANDY P227 (P) R/F**  
PARINGA NOVOTEL (P)  
ROSEDALE CANDY M37 (P)  
ROSEDALE CANDY F312 (AI) (ET) (P)



### Charolais Group Breedplan EBV's - SIRE VERIFIED - BPA & MYO FREE

DIR	GL	BWT	200	400	600	MILK	DOM
+1.4	-0.6	+0.3	+14	+28	+47	+15	+\$26
46%	73%	74%	66%	69%	66%	46%	
SS	CWT	EMA	RIB	RMP	RBY	IMF	MAT
+2.5	+20	0.0	+0.8	1.1	-0.7	-0.1	+\$50
61%	54%	50%	55%	57%	52%	52%	

Purchaser \$

### HOMOZYGOUS POLLED - TOP 5% MILK, TOP 20% 600 DAY

A nice looking red bull with thickness who is yet again an easy doing type meaning progeny will lay on the cover easier. A very quiet attitude makes him a pleasure to deal with and his dam is a moderate but very tidy cow.

## 36 ROSEDALE TWISTER (P) (R/F)

Born: 10/11/2022  
Society ID: MR22T239E

SILVERSTREAM EVOLUTION (P)  
PALGROVE JAGUAR (ET) (P)  
PALGROVE LEONIE 23 (AI) (ET) (P)  
**Sire: MINNIE-VALE QUIZMASTER (P) (R/F)**  
MOONGOOL GOLD DUST (P)  
MINNIE-VALE SONG L107 (P) (R/F)  
MINNIE VALE SONG G40 (P)  
  
ROSEDALE DARWIN (P)  
ROSEDALE H168 (P)  
ROSEDALE BEATRIX D148 (P)  
**Dam: ROSEDALE REBECCA M86 (P)**  
MINNIE VALE DEPUTY (P)  
ROSEDALE REBECCA B44 (P)  
ROSEDALE REBECCA V56 (P)



### Charolais Group Breedplan EBV's - SIRE VERIFIED - BPA & MYO FREE

DIR	GL	BWT	200	400	600	MILK	DOM
-3.6	-0.2	+1.5	+13	+22	+35	+6	+\$13
44%	48%	73%	64%	68%	65%	46%	
SS	CWT	EMA	RIB	RMP	RBY	IMF	MAT
+0.6	+12	+0.9	+2.3	+3.0	-1.9	+1.2	+\$22
45%	57%	52%	58%	57%	55%	39%	

Purchaser \$

### TOP 5% RIB & RUMP FAT, IMF %

An exciting slightly younger bull by Quizmaster who has some high level carcass data ranking with the best in the breed for fats and IMF.

## 37 ROSEDALE TRAVIS (P)

Born: 02/10/2022  
Society ID: MR22T223E

SILVERSTREAM EVOLUTION (P)  
PALGROVE JAGUAR (ET) (P)  
PALGROVE LEONIE 23 (AI) (ET) (P)  
**Sire: MINNIE-VALE QUIZMASTER (P) (R/F)**  
MOONGOOL GOLD DUST (P)  
MINNIE-VALE SONG L107 (P) (R/F)  
MINNIE VALE SONG G40 (P)  
ROSEDALE FAIRLANE (P)  
ROSEDALE KAVIAR (P)  
ROSEDALE NET E58 (P)  
**Dam: ROSEDALE RUBY M226 (P)**  
FERNVALE TRAPPER  
ROSEDALE RUBY 1204 (P)  
ROSEDALE RUBY Q79 (P)



### Charolais Group Breedplan EBV's SIRE VERIFIED - BPA & MYO FREE

DIR	GL	BWT	200	400	600	MILK	DOM
+5.9	-1.6	-0.2	+10	+13	+24	+8	\$14
42%	51%	72%	62%	64%	61%	44%	
SS	CWT	EMA	RIB	RMP	RBY	IMF	MAT
+0.5	+8	-0.1	+1.1	+1.5	1.2	+0.6	\$24
48%	53%	48%	52%	51%	51%	48%	

Purchaser \$

### HOMOZYGOUS POLLED, Top 15% IMF, Top 25% Rub & Rump fats, CED

This is an awesome young bull packed with muscle who will breed some pretty impressive steers. Moderate in stature but deep sided and still plenty of growing left in him. He's always had natural width and softness.



## 38 ROSEDALE TORONTO (P)

Born: 13/09/2022

Society ID: MR22T192E

GUNNADOO YUPPY (P)  
 KENMERE HERICHIO (P)  
 KENMERE DIAMOND SPUR D8 (AI) (ET) (P)  
**Sire: KENMERE POMPEII (P)**  
 LT BLUEGRASS (P)  
 KENMERE TOURMALINE D23 (AI) (P)  
 KENMERE TOURMALINE (P)  
 SVY PILGRIM (P)  
 ROSEDALE HARRY (AI) (P)  
 ROSEDALE CANDY C36 (P)  
**Dam: ROSEDALE CANDY Q174 (P)**  
 ROSEDALE FRONTIER (P)  
 ROSEDALE CANDY J220 (P)  
 ROSEDALE CANDY Z74 (P)



Charolais Group Breedplan EBV's - SIRE VERIFIED - BPA & MYO FREE

DIR	GL	BWT	200	400	600	MILK	DOM
+1.6	-3.9	+0.1	+13	+31	+39	+10	+\$32
41%	70%	73%	65%	67%	65%	44%	
SS	CWT	EMA	RIB	RMP	RBY	IMF	MAT
+1.8	+23	+0.4	-1.0	-1.4	+0.4	+0.1	+\$56
74%	57%	52%	56%	55%	54%	54%	

Purchaser \$

**HOMOZYGOUS POLLED, Top 10% 200 Day Growth**

The first of a nice run of Pompeii bulls, Toronto is well balanced and athletic. His growth EBV's rank highly within the breed. A fine looking bull

## 39 ROSEDALE TITANIC (P)

Born: 06/09/2022

Society ID: MR22T58E

ROSEDALE DARWIN (P)  
 ROSEDALE H168 (P)  
 ROSEDALE BEATRIX D148 (P)  
**Sire: ROSEDALE PONTING (P)**  
 PALGROVE EXPO (P)  
 ROSEDALE EMPRESS J167 (P)  
 ROSEDALE EMPRESS B188 (P)  
 PALGROVE WISDOM (P)  
 CANOONA CAVALERO (P)  
 PALGROVE ESTELLA 174 (AI) (P)  
**Dam: ROSEDALE KELLY G188 (P)**  
 ROSEDALE SELECTOR (P)  
 ROSEDALE KELLY U108 (P)  
 ROSEDALE KELLY 2



Charolais Group Breedplan EBV's - SIRE VERIFIED - BPA & MYO FREE

DIR	GL	BWT	200	400	600	MILK	DOM
-8.0	-3.1	+1.7	+16	+35	+57	+13	+\$29
44%	49%	71%	61%	64%	61%	41%	
SS	CWT	EMA	RIB	RMP	RBY	IMF	MAT
+1.6	+29	+3.0	+0.8	+1.3	+0.1	+0.7	+\$47
43%	54%	47%	51%	50%	51%	47%	

Purchaser \$

**HOMOZYGOUS POLLED, Top 5% 200,400, 600 Day, Milk, Top 10% IMF**

A powerful unit with a big EMA and positive fats. This bull is strongly made and his progeny will weigh like lead. He also ranks in the top 10% for IMF, his progeny will grow out very efficiently.

## 40 ROSEDALE TOP GUN (R/F) (P)

Born: 14/09/2022

Society ID: MR22T55E

GUNNADOO YUPPY (P)  
 ROSEDALE DEALER (P) (R/F)  
 ROSEDALE BUTTERSCOTCH Y47 (P) (R/F)  
**Sire: ROSEDALE MAVERICK (AI) (ET) (P)**  
 HARVIE JAGER 65J PMC228759 (P)  
 ROSEDALE CANDY G304E (AI) (ET) (P) (R/F)  
 ROSEDALE CANDY Q140 (P)  
 LT STAGECOACH (P)  
 LT VENTURE (P)  
 LT BALLET (P)  
**Dam: ROSEDALE HONOR M59 (AI) (P)**  
 CANOONA CAVALERO (P)  
 ROSEDALE HONOR F222 (P)  
 ROSEDALE CANDY W39 (P)



Charolais Group Breedplan EBV's - SIRE VERIFIED - MYO FREE

DIR	GL	BWT	200	400	600	MILK	DOM
+5.8	+2.6	-0.7	+12	+26	+37	+12	+\$38
39%	50%	70%	57%	63%	61%	50%	
SS	CWT	EMA	RIB	RMP	RBY	IMF	MAT
+2.7	+21	+1.3	+0.9	+1.2	-0.6	+0.2	+\$52
54%	58%	45%	53%	53%	49%	50%	

Purchaser \$

**Top 15% Milk,**

Top gun is a quality option out of one of our favorite dams. A full brother was lot 3 in last years sale selling for \$22,000. A balanced bull that does everything well. A great al rounder with thickness and sire appeal.



# CHAROLAIS BULLS

## 41 ROSEDALE TRADESMAN (P) (R/F)

Born: 26/08/2022  
Society ID: MR22T52E

GUNNADOO YUPPY (P)  
ROSEDALE DEALER (P) (R/F)  
ROSEDALE BUTTERSCOTCH Y47 (P) (R/F)  
**Sire: ROSEDALE MAVERICK (AI) (ET) (P)**  
HARVIE JAGER 65J PMC228759 (P)  
ROSEDALE CANDY G304E (AI) (ET) (P) (R/F)  
ROSEDALE CANDY Q140 (P)

ROSEDALE FAIRLANE (P)  
ROSEDALE KAVIAR (P)  
ROSEDALE NET E58 (AI) (P)  
**Dam: ROSEDALE EMPRESS M258 (P)**  
PALGROVE EXPO (AI) (P)  
ROSEDALE EMPRESS H203 (P)  
ROSEDALE GEORGETTE B196 (P)



**HOMOZYGOUS POLLED, Top 25% IMF% & CE & TOP 10% MILK,**  
A wide and deep sided maverick bull with extra carcass. Below average birth with good steady growth. Another quality bull.

### Charolais Group Breedplan EBV's - SIRE VERIFIED - BPA & MYO FREE

DIR	GL	BWT	200	400	600	MILK	DOM
+5.5	-1.9	-0.5	+12	+14	+22	+15	+\$22
41%	41%	72%	63%	66%	62%	49%	
SS	CWT	EMA	RIB	RMP	RBY	IMF	MAT
0.5	+11	+1.3	-0.3	-0.6	+0.4	+0.4	+\$27
46%	46%	51%	55%	54%	43%	50%	

Purchaser: \$

## 42 ROSEDALE THUNDERBOLT (P)

Born: 20/08/2022  
Society ID: MR22T202E

KENMERE RADIATOR (P)  
KENMERE HIRICHIO (P)  
DIAMOND SPUR (P)  
**Sire: KENMERE POMPEII (P)**  
LT BLUEGRASS (P)  
KENMERE TOURMALINE (AI) (P)  
KENMERE TOURMALINE)  
SILVERSTREAM EVOLUTION (P)  
SILVERSTREAM LANDMARK (P)  
ROSEDALE BEATRIX D148 (P)  
**Dam: ROSEDALE BUTTERSCOTCH Q222 (AI) (P)**  
LT LONG DISTANCE (P)  
ROSEDALE BUTTERSCOTCH K71 (P) (R/F)  
ROSEDALE BUTTERSCOTCH H123 (P)(R/F)



**Top 20% 400 & 600 Day, CWT, GL**  
A long and thick bodied sire by Pompeii that will cover some ground. An accelerated growth curve ensuring progeny will keep the weight gains going. Clean fronted and smooth skinned.

### Charolais Group Breedplan EBV's - SIRE VERIFIED

DIR	GL	BWT	200	400	600	MILK	DOM
+0.8	-4.4	+0.8	+12	+31	+45	+9	+\$30
45%	72%	72%	63%	66%	62%	40%	
SS	CWT	EMA	RIB	RMP	RBY	IMF	MAT
+1.4	+26	+0.9	-1.0	-1.5	0.8	-0.4	+\$49
51%	54%	40%	47%	47%	44%	40%	

Purchaser: \$

## 43 ROSEDALE TKO (P)

Born: 11/0/2022  
Society ID: MR22T205E

KENMERE RADIATOR (P)  
KENMERE HIRICHIO (P)  
DIAMOND SPUR (P)  
**Sire: KENMERE POMPEII (P)**  
LT BLUEGRASS (P)  
KENMERE TOURMALINE (AI) (P)  
KENMERE TOURMALINE)  
ROSEDALE FAIRLANE (P)  
ROSEDALE KAVIAR (P)  
ROSEDALE NET E58 (P)  
**Dam: ROSEDALE EMPRESS Q241 (P)**  
ROSEDALE FIRST CLASS (P)  
ROSEDALE EMPRESS L80 (P)  
ROSEDALE EMPRESS J167 (P)



**Top 20% 400, 600 Day, Top 5% Milk, Top 25% GL**  
A clean fronted and growthy bull with a lot of presence. The type of bull that is capable of breeding some great daughters if looking to retain females as he comes from strong female line.

### Charolais Group Breedplan EBV's - SIRE VERIFIED

DIR	GL	BWT	200	400	600	MILK	DOM
+3.9	-4.0	-0.6	+11	+30	+38	+14	\$42
49%	51%	72%	64%	69%	65%	47%	
SS	CWT	EMA	RIB	RMP	RBY	IMF	MAT
+1.7	+22	0.0	-0.1	-0.2	-0.6	+0.3	\$83
46%	58%	45%	53%	53%	49%	45%	

Purchaser: \$



## 44 ROSEDALE TARZAN (P)

**Born:** 31/08/2022

**Society ID:** MR22T162E

**Sire: ROSEDALE QUAMBONE (P)**  
 PALGROVE CARBINE (P)  
 PALGROVE MANDATE (P)  
 PALGROVE DIGNA 194 (P)  
 ROSEDALE FAIRLANE (P)  
 ROSEDALE CONFIDENCE L10 (P)  
 ROSEDALE CONFIDENCE B10 (P)

**Dam: ROSEDALE DAINTE P170 (AI) (P)**  
 SILVERSTREAM EVOLUTION (P)  
 SILVERSTREAM LANDMARK (P)  
 MERRIDAL FARAH  
 PALGROVE EXPO (P)  
 ROSEDALE DAINTE G149 (P)  
 ROSEDALE DAINTE B187 (P)



**Charolais Group Breedplan EBV's - SIRE VERIFIED - BPA & MYO FREE**

DIR	GL	BWT	200	400	600	MILK	DOM
-4.0	-0.2	+1.8	+21	+29	+44	+5	\$26
43%	50%	73%	63%	62%	60%	44%	
SS	CWT	EMA	RIB	RMP	RBY	IMF	MAT
+0.2	+23	+2.6	+1.5	+2.2	-0.3	+0.7	+\$46
70%	52%	47%	51%	50%	50%	46%	

**Purchaser** \$

**HOMOZYGOUS POLLED - Top 5% 200 DAY, Top 10% EMA, Rump Fat , Top 25% 400,600 DAY, Top 15% Rib Fat**

Tarzan is a powerful bull with a lot of red meat. Very mobile and evenly balanced. Some very impressive growth and carcass data on this bull.

## 45 ROSEDALE TRENDSETTER (P) (R/F)

**Born:** 13/08/2022

**Society ID:** MR22T46E

**Sire: ROSEDALE MAVERICK (AI) (ET) (P) (R/F)**  
 GUNNADOO YUPPY (P)  
 ROSEDALE DEALER (P) (R/F)  
 ROSEDALE BUTTERSCOTCH Y47 (P) (R/F)  
 HARVIE JAGER 65J PMC228759 (P)  
 ROSEDALE CANDY G304E (AI) (ET) (P) (R/F)  
 ROSEDALE CANDY Q140 (P)

**Dam: BRYSON FIRE L28 (P)**  
 FERNVALE TRAPPER  
 ROSEDALE DARWIN (P)  
 ROSEDALE GRACE A97 (AI) (P)  
 EC NEW TREND (P)  
 ROSEDALE CANDY Z60 (AI)  
 ROSEDALE CANDY W 23



**Charolais Group Breedplan EBV's - SIRE VERIFIED - BPA & MYO FREE**

DIR	GL	BWT	200	400	600	MILK	DOM
+2.6	-1.4	+0.1	+5	+16	+22	+10	+\$17
37%	49%	72%	56%	62%	60%	34%	
SS	CWT	EMA	RIB	RMP	RBY	IMF	MAT
+1.5	+11	+0.2	-0.5	-0.7	+0.3	-0.3	+\$33
70%	54%	47%	51%	49%	50%	45%	

**Purchaser** \$

**HOMOZYGOUS POLLED, Top 10% MILK**

A classy maverick bull full of quality later in the catalogue which is reflective of the strength of the draft. We think this bull may have a bit more punch than his numbers suggest. Thick and soft.

## 46 ROSEDALE TANDOORI (P) (R/F)

**Born:** 23/08/2022

**Society ID:** MR22T182E

**Sire: KENMERE POMPEII (P)**  
 KENMERE HERICHIO (P)  
 LT BLUEGRASS (P)  
 KENMERE TOURMALINE (AI) (P)  
 KENMERE TOURMALINE)

**Dam: ROSEDALE BUTTERSCOTCH Q114 (P)**  
 ROSEDALE DARWIN (P)  
 PALGROVE MANDATE (P)  
 ROSEDALE BEATRIX D148 (P)  
 GUNNADOO YUPPY (P)  
 ROSEDALE BUTTERSCOTCH F68 (P)  
 ROSEDALE KRISTINA C81 (P)



**Charolais Group Breedplan EBV's - SIRE VERIFIED**

DIR	GL	BWT	200	400	600	MILK	DOM
+5.9	-4.6	-0.8	+3	+13	+24	+8	\$17
38%	48%	69%	62%	62%	60%	36%	
SS	CWT	EMA	RIB	RMP	RBY	IMF	MAT
+1.7	+13	-0.2	-0.5	-0.5	-0.2	+0.4	\$47
70%	51%	47%	50%	49%	50%	45%	

**Purchaser** \$

**HOMOZYGOUS POLLED, Top 25% Milk, IMF**

A strong bodied bull who is well muscled and balanced. Out of a quality young cow we are confident Tandoori will do fantastic job and could be used successfully in a number of different situations.



# CHAROLAIS BULLS

## 47 ROSEDALE TOBI (P)

Born: 13/09/2022  
Society ID: MR22T207E

KENMERE HERICHIO (P)

**Sire: KENMERE POMPEII (P)**

LT BLUEGRASS (P)  
KENMERE TOURMALINE (AI) (P)  
KENMERE TOURMALINE

ROSEDALE DEALER (P) (R/F)  
ROSEDALE MAVERICK (AI) (ET) (P) (R/F)  
ROSEDALE CANDY G304E (AI) (ET) (P)

**Dam: ROSEDALE CANDY Q71 (P)**

PALGROVE EXPO (P)  
ROSEDALE CANDY J165 (P)  
ROSEDALE CANDY B169 (P)



Charolais Group Breedplan EBV's -SIRE VERIFIED

DIR	GL	BWT	200	400	600	MILK	DOM
+1.8	-3.7	+0.2	+7	+24	+32	+11	+\$21
41%	46%	70%	60%	63%	60%	43%	
SS	CWT	EMA	RIB	RMP	RBY	IMF	MAT
+1.7	+17	-0.3	+0.1	0.0	-0.4	0.0	+\$40
51%	54%	39%	47%	47%	43%	39%	

Purchaser \$

**HOMOZYGOUS POLLED, Top 15% 400 Day, top 20% 600 Day, CWT**

Tobie is a thickset, well made bull out of a terrific Maverick daughter. This joining has worked really well and we think there is a lot of carcass here in a moderate package. Progeny will be well suited for the domestic trade.

## 48 ROSEDALE THREDBO (AI) (P)

Born: 25/08/2022  
Society ID: MR22T106E

COOLEY ROYCE (P)  
FF ABOUT TIME (P)  
DC GRONA (P)

**Sire: OW LEAD TIME (P)**

OW SANDCREEK (P)  
OW MISS SANDCREEK (P)  
OW MISS MAXIMISER (P)  
ROSEDALE DEALER (P) (R/F)  
ROSEDALE MAVERICK (AI) (ET) (P) (R/F)  
ROSEDALE CANDY G304 (AI) (ET) (P)

**Dam: ROSEDALE BEATRIX R201 (P) R/F**

PALGROVE EXPO (P)  
ROSEDALE BEATRIX K165 (P)  
ROSEDALE BEATRIX G147 (P)



Charolais Expected Progeny Value

DIR	GL	BWT	200	400	600	MILK	DOM
3.6	-4.1	-2.0	+9	+18	+19	+15	+\$23
SS	CWT	EMA	RIB	RMP	RBY	IMF	MAT
+1.0	+21	+1.4	+0.4	+0.2	0.0	0.2	+\$38

Purchaser \$

EBV's will be updated in supplementary information.

A thick and free moving more moderate type of bull who is a bit earlier maturing. Still packs loads of punch and will breed some robust calves.

## 49 ROSEDALE TENNESSEE (P)

Born: 26/08/2022  
Society ID: MR22T173E

PALGROVE CARBINE (P)  
PALGROVE MANDATE (P)  
PALGROVE DIGNA 194 (P)

**Sire: ROSEDALE QUAMBONE (P)**

ROSEDALE FAIRLANE (P)  
ROSEDALE CONFIDENCE L10 (P)  
ROSEDALE CONFIDENCE B10 (P)  
SVY PILGRIM (P)  
ROSEDALE HARRY (P)  
ROSEDALE CANDY C36 (P)

**Dam: ROSEDALE GERTY P68 (P)**

PALGROVE EXPO (P)  
ROSEDALE GERTY J183 (P)  
ROSEDALE GERTY D56 (P)



Charolais Group Breedplan EBV's SIRE VERIFIED

DIR	GL	BWT	200	400	600	MILK	DOM
-9.2	-2.2	+2.1	+21	+30	+47	+5	+\$21
49%	72%	58%	66%	69%	66%	49%	
SS	CWT	EMA	RIB	RMP	RBY	IMF	MAT
+1.5	+20	+1.0	+0.7	+1.1	-0.5	+0.6	+\$28
75%	59%	54%	60%	59%	57%	46%	

Purchaser \$

**HOMOZYGOUS POLLED, Top 10% 200 & 600, Top 15% 400, Top 5% IMF**

A tremendous bull down the order indicating the quality of this draft. As to be expected from Quambone lineage growth complemented by the ability to lay on some fat and IMF.






## 50 ROSEDALE TRIPLE THREAT (AI) (P)

**Sire:** ROSEDALE QUARTERMASTER (P)  
 PALGROVE CARBINE (P)  
 PALGROVE MANDATE (AI) (P)  
 PALGROVE  
 PALGROVE EXPO (P)  
 ROSEDALE POPPY K151 (P)  
 ROSEDALE UNPOPPED D55 (P)

**Dam:** ROSEDALE ESTRA H55 (P)  
 PALGROVE WISDOM (AI) (ET) (P)  
 CANOONA CAVALERO (P)  
 ROSEDALE NET E58 (AI) (P)  
 FERVALE TRAPPER (H)  
 ROSEDALE ESTRA A 91 (P)  
 ROSEDALE ESTRA V53 (P)

**Born:** 21/08/2022

**Society ID:** MR22T62E



**HOMOZYGOUS POLLED Top 25% 200, 400, 600 Day, IMF**  
 The final quartermaster son and yet again love the length, thickness and well rounded carcass traits. A great commercial bull in the making.

Charolais Group Breedplan EBV's - SIRE VERIFIED - BPA & MYO FREE								
DIR	GL	BWT	200	400	600	MILK	DOM	
-4.7	-2.6	+0.7	+15	+27	+48	+6		+\$25
40%	70%	72%	61%	66%	62%	38%		
SS	CWT	EMA	RIB	RMP	RBY	IMF	MAT	
+1.3	+22	+1.8	+0.1	+0.3	0.1	+0.7		+\$46
45%	47%	38%	47%	47%	43%	39%		

<b>Purchaser</b>	\$
------------------	----


## 51 ROSEDALE TONGA (P)

**Sire:** KENMERE POMPEII (P)  
 KENMERE HERICHIO (P)  
 LT BLUEGRASS (P)  
 KENMERE TOURMALINE (AI) (P)  
 KENMERE TOURMALINE)

**Dam:** ROSEDALE GOLDEN GIRL Q91 (P)  
 ROSEDALE DARWIN (P)  
 ROSEDALE H168 (P)  
 ROSEDALE BEATRIX D148 (P)  
 PCC SUDDEN IMPACT (P)  
 ROSEDALE GOLDEN GIRL H412 (AI) (ET) (P)  
 ROSEDALE GOLDEN GIRL A 34 (P)

**Born:** 16/09/2022

**Society ID:** MR22T213E



A really well made bull by Pompeii going back to a top young cow from a strong family. Excellent growth index's and carcass scans and a very impressive phenotype.

Charolais Group Breedplan EBV's - SIRE VERIFIED								
DIR	GL	BWT	200	400	600	MILK	DOM	
-1.6	-2.0	+1.1	+11	+33	+47	+15		+\$30
40%	44%	71%	55%	56%	55%	39%		
SS	CWT	EMA	RIB	RMP	RBY	IMF	MAT	
+1.4	+28	+1.3	-0.2	-0.3	+0.1	+0.3		+\$52
51%	54%	40%	47%	47%	44%	40%		

<b>Purchaser</b>	\$
------------------	----


## 52 ROSEDALE TEX (P)

**Sire:** KENMERE POMPEII (P)  
 KENMERE HERICHIO (P)  
 LT BLUEGRASS (P)  
 KENMERE TOURMALINE (AI) (P)  
 KENMERE TOURMALINE)  
 ROSEDALE FAIRLANE (P)  
 ROSEDALE KAVIAR (P)  
 ROSEDALE NET E58 (P)

**Dam:** ROSEDALE CANDY Q182 (P)  
 ROSEDALE ZINGER (P)  
 ROSEDALE VIOLET C128 (P)  
 ROSEDALE VIOLET Z127 (P)

**Born:** 07/09/2022

**Society ID:** MR22T193E



**TOP 15% 200 DAY, TOP 5% 400 DAY, TOP 10% 600 DAY, MILK, CWT**  
 A lot of meat in this big growthy bull by Pompeii. Some real power but also the softness to go with it which is what we strive for.

Charolais Group Breedplan EBV's SIRE VERIFIED								
DIR	GL	BWT	200	400	600	MILK	DOM	
+0.5	-3.6	+0.6	+17	+40	+52	+13		\$39
41%	44%	71%	55%	57%	56%	41%		
SS	CWT	EMA	RIB	RMP	RBY	IMF	MAT	
+2.0	+33	+1.3	-0.6	-0.9	+0.8	-0.5		\$64
45%	46%	38%	53%	53%	49%	45%		

<b>Purchaser</b>	\$
------------------	----



# CHAROLAIS BULLS

## 53 ROSEDALE TORCH (P)

Born: 09/08/2022  
Society ID: MR22T214E

KENMERE HERICHIO (P)

Sire: **KENMERE POMPEII (P)**

LT BLUEGRASS (P)  
KENMERE TOURMALINE (AI) (P)  
KENMERE TOURMALINE)

ROSEDALE DARWIN (P)  
ROSEDALE H168 (P)  
ROSEDALE BEATRIX D148 (P)

Dam: **ROSEDALE RUBY Q92 (P)**

CANOONA CAVALERO (P)  
ROSEDALE RUBY H66 (P)  
ROSEDALE RUBY E40 (P)



Charolais Group Breedplan EBV's - SIRE VERIFIED

DIR	GL	BWT	200	400	600	MILK	DOM
+2.9	-3.0	0.0	+10	+30	+39	+15	+\$31
41%	70%	72%	61%	66%	62%	39%	
SS	CWT	EMA	RIB	RMP	RBY	IMF	MAT
+1.6	+25	+1.4	+0.4	+0.6	-0.1	+0.3	+\$57
51%	54%	39%	47%	55%	54%	48%	

Purchaser

\$

**Top 25% 600 Day Growth, Top 20% 400 and CWT, top 5% Milk**

Torch is a bigger and more powerful Pompeii son with a ton of volume. He carries a big mass but moves freely and also has the ability to lay on the cover making him commercially very appealing.

## 54 ROSEDALE TIMOTHY (P) (RF)

Born: 07/08/2022  
Society ID: MR22T28E

GUNNADOO YUPPY (P)  
ROSEDALE DEALER (P) (R/F)  
ROSEDALE BUTTERSCOTCH Y47 (P) (R/F)

Sire: **ROSEDALE MAVERICK (AI) (ET) (P)**

HARVIE JAGER 65J PMC228759 (P)  
ROSEDALE CANDY G304E (AI) (ET) (P) (R/F)  
ROSEDALE CANDY Q140 (P)

NWMSU DOC SILVER (P)  
ASCOT DOC SILVER G100 (AI) (ET) (P)  
PARINGA RIO BRAVO (AI) (ET) (P)

Dam: **ROSEDALE LUCY J302 (P)**

PARINGA NOVOTEL (P)  
ROSEDALE LUCY F100 (P)  
ROSEDALE LUCY A210 (P)



Charolais Group Breedplan EBV's - SIRE VERIFIED - BPA & MYO FREE

DIR	GL	BWT	200	400	600	MILK	DOM
+7.2	-2.0	+0.1	+8	+12	+23	+7	+\$18
47%	70%	75%	61%	66%	62%	40%	
SS	CWT	EMA	RIB	RMP	RBY	IMF	MAT
+1.5	+11	+0.8	-0.4	-0.6	+0.7	-0.2	+\$30
51%	54%	40%	47%	47%	44%	40%	

Purchaser

\$

**HOMOZYGOUS POLLED , Top 15% CE,**

A moderate maverick with a nice hindquarter. A High calving ease bull with below average birth and a steady growth curve. Great disposition.

## 55 ROSEDALE TORO (P)

Born: 06/08/2022  
Society ID: MR22T45E

GUNNADOO YUPPY (P)  
ROSEDALE DEALER (P) (R/F)  
ROSEDALE BUTTERSCOTCH Y47 (P) (R/F)

Sire: **ROSEDALE MAVERICK (AI) (ET) (P)**

HARVIE JAGER 65J PMC228759 (P)  
ROSEDALE CANDY G304E (AI) (ET) (P) (R/F)  
ROSEDALE CANDY Q140 (P)

SVY PILGRIM (P)  
ROSEDALE HARRY (P)  
ROSEDALE CANDY C36 (P)

Dam: **ROSEDALE CONFIDENCE L159 (P)**

ROSEDALE FIRST CLASS (P)  
ROSEDALE CONFIDENCE H254 (P)  
ROSEDALE CONFIDENCE E117 (P)



Charolais Group Breedplan EBV's - SIRE VERIFIED - BPA & MYO FREE

DIR	GL	BWT	200	400	600	MILK	DOM
+7.4	-2.9	-1.0	+9	+16	+19	+9	+\$20
47%	70%	75%	68%	70%	66%	50%	
SS	CWT	EMA	RIB	RMP	RBY	IMF	MAT
+0.0	+11	+0.4	+0.7	+0.9	-0.8	+0.7	+\$30
51%	54%	54%	61%	60%	44%	53%	

Purchaser

\$

**HOMOZYGOUS POLLED - Top 15% CE, Top 25% BWT,**

A very nice calving ease bull with excellent carcass traits. Long bodied and thick with even fat cover. Great option for cows or heifers.

# YEARLING CHAROLAIS BULLS



## 56 ROSEDALE TURBO (P)

**Born:** 08/11/2022  
**Society ID:** MR22T224E

SILVERSTREAM EVOLUTION (P)  
PALGROVE JAGUAR (ET) (P)  
PALGROVE LEONIE 23 (AI) (ET) (P)  
**Sire: MINNIE-VALE QUIZMASTER (P) (R/F)**  
MOONGOOL GOLD DUST (P)  
MINNIE-VALE SONG L107 (P) (R/F)  
MINNIE VALE SONG G40 (P)

ROSEDALE FAIRLANE (P)  
ROSEDALE KAVIAR (AI) (P)  
ROSEDALE NET E58 (P)  
**Dam: ROSEDALE HONOR M233 (P)**  
GUNNADOO YUPPY (P)  
ROSEDALE HONOR F169 (P)  
ROSEDALE CINDERELLA (P)



Charolais Group Breedplan EBV's - SIRE VERIFIED									
DIR	GL	BWT	200	400	600	MILK	DOM		
-0.7	-0.3	+1.5	+17	+29	+44	+5		+\$23	
45%	48%	72%	64%	66%	62%	47%			
SS	CWT	EMA	RIB	RMP	RBY	IMF	EXP		
+0.9	+19	+0.9	+0.9	+1.2	-1.2	+0.8		+\$34	
46%	54%	39%	52%	52%	43%	43%			
<b>Purchaser</b>						\$			

**HOMOZYGOUS POLLED Top 20% Calving Ease, Top 25% birth**

A great young bull who gives away 3 months in age to some of the other bulls above him in the catalogue. Thick, great carcass and excellent weight for age as well as being a great type.

## 57 ROSEDALE TIGER KING (AI) (ET) (P)

**Born:** 25/04/2022  
**Society ID:** MR22T16E

PALGROVE CARBINE (P)  
PALGROVE MANDATE (AI) (P)  
PALGROVE  
**Sire: ROSEDALE QUARTERMASTER (P)**  
PALGROVE EXPO (P)  
ROSEDALE POPPY K151 (P)  
ROSEDALE UNPOPPED D55 (P)

HARVIE CRAVEN A JAY (R/F)  
HARVIE HIGH TIMES (P) (R/F)  
SDC HOPE  
**Dam: ROSEDALE BUTTERSCOTCH L44 (R/F) (P)**  
PARINGA NOVOTEL (P)  
ROSEDALE BUTTERSCOTCH H21 (P)  
ROSEDALE BUTTERSCOTCH E109



Charolais Group Breedplan EBV's SIRE VERIFIED - MYO FREE									
DIR	GL	BWT	200	400	600	MILK	DOM		
-4.6	+2.2	+0.6	+16	+33	+53	+9		+\$32	
42%	70%	72%	61%	66%	62%	40%			
SS	CWT	EMA	RIB	RMP	RBY	IMF	EXP		
+1.2	+29	+1.9	-0.2	-0.4	+0.6	+0.5		+\$57	
51%	54%	40%	47%	47%	44%	40%			
<b>Purchaser</b>						\$			

**HOMOZYGOUS POLLED, Top 20% 200 Day, IMF Top 15% 400, Top 10% 600**

A cracking bull to finish off the spring calving Charolais draft. An ET calf who is thick soft and lovely natured. Excellent growth and carcass EBV's.

## 58 ROSEDALE UNIVERSAL (AI) (P)

**Born:** 11/03/2023  
**Society ID:** MR22T9E

LT LEDGER 0332 (P)  
LT SUNDANCE (P)  
LT BALLET 9219 (P)  
**Sire: LT VISTA 5319 (P)**  
LT LONG DISTANCE (P)  
LT ATHENA 2040 (P)  
LT BLUE ATHENA (P)  
LT LEDGER (P)  
AIRLIE KOWTOW (P) (R/F)  
ROSEDALE BEATRIX D148 (P)  
**Dam: ROSEDALE DAINTE R151 (P) (R/F)**  
PALGROVE EXPO (P)  
ROSEDALE DAINTE G149 (P)  
ROSEDALE DAINTE B187 (P)



Charolais Group Breedplan EBV's - SIRE VERIFIED									
DIR	GL	BWT	200	400	600	MILK	DOM		
-0.2	-3.7	-1.4	+9	+22	+21	+8		\$18	
49%	55%	73%	63%	69%	65%	51%			
SS	CWT	EMA	RIB	RMP	RBY	IMF	EXP		
+1.7	+16	+0.6	+0.8	+1.0	-0.8	+0.1		\$39	
54%	58%	45%	53%	53%	49%	43%			
<b>Purchaser</b>						\$			

**Top 25% Calving Ease, Top 20% Rib & Rump Fat, Top 15% Milk,**

The one and only yearling bull in this years draft. A thick young bull from the low birth weight sire LT VISTA. This bull could be used on cows or heifers to great effect with good fat coverage. A heifers 1st calf.



# COMPOSITE SIRES

## MINNIE VALE QUIZMASTER (R/F) (P)

**Born:** 20/04/2019

**Society ID:** SGSQ4E

SILVERSTREAM BRUMBY (P)  
 SILVERSTREAM EVOLUTION (P)  
 SILVERSTREAM GLOSSY S120  
**Sire: PALGROVE JAGUAR (P) (R/F)**  
 PLATINUM WINDFALL (P)  
 PALGROVE LEONIE (AI) (ET) (P)  
 PALGROVE LEONIE

ADVANCE DOZER (R/F)  
 MOONGOOL GOLD DUST (R/F)  
 MOONGOOL RECALL  
**Dam: MINNIE VALE SONG L107 (P) (R/F)**  
 WINCHESTER PEACEMAKER (P)  
 MINNIE VALE SONG G40 (P)  
 MINNIE VALE SONG D10 (P)



A homozygous polled double red bull who we purchased as the Top Price Bull at the 2021 Minnie Vale sale. A meaty bull who stands on good bone with a huge hindquarter which is evident in his progeny. He currently gets used in both our stud and black program.

### CHAROLAIS BREEDPLAN - SIRE VERIFIED

DIR	DTRS	GL	BWT	200	400	600	MWT
-4.6	-4.7	+1.7	+3.0	+13	+23	+33	+41
43%	34%	48%	70%	55%	59%	60%	53%
MILK	SS	CWT	EMA	RIB	RMP	RBY	IMF
-1	+0.1	+1.3	+1.3	+0.9	1.0	-0.4	+0.5
35%	68%	49%	42%	46%	45%	45%	41%
Index \$ Value	Domestic (\$)			Export (\$)			
	+\$14			+\$22			

## DSK MITCH M44 (P) (R/F)

**Born:** 03/06/2016

**Society ID:** DSKM44E

TEMANA XOROX  
 YACCAMOO COWBOY (P)  
 YACCAMOO (AI) (P)  
**Sire: TEMANA GOLDEN LOGIE G66E (P) (R/F)**  
 MEILARD RJ  
 TEMANA X104 (AI) (ET)  
 TEMANA LORETTA (P/S)

AYR HUELVA'S HUSTLER (AI)  
 DSK RED EMPEROR Y13E (P) (R/F)  
 DSK GN JULIETTE U1E (AI) (P)  
**Dam: DSK RE WENDY C31E (P) (R/F)**  
 LT WYOMING WIND 4020 PLD (P)  
 DSK WW WENDY A10E (AI) (ET) (P)  
 PINNAROO RED TRENDIE R/F



A Dark Red Charolais Sire doing a great job on our black commercial herd. Top priced bull in their 2018 sale. Some lovely offspring in this draft, very happy with his progeny.

### Charolais Group Breedplan EBV's

DIR	DTRS	GL	BWT	200	400	600	MWT
+3.4	-4.3	-0.7	+0.3	+3	+6	+9	+15
33%	25%	46%	68%	60%	62%	65%	55%
MILK	SS	CWT	EMA	RIB	RMP	RBY	IMF
+6	+0.7	+5	+1.2	-0.7	-0.9	+0.5	+0.2
41%	71%	51%	43%	43%	43%	45%	42%
Index \$ Value	Domestic (\$)			Export (\$)			
	+\$7			\$+9			





**59 ROSEDALE TEDD (P)**  
 Born: 22/08/2022 Tag: XBT110  
 TEMANA GOLD LOGIE (P) (R/F)  
**SIRE: DSK MITCH (P)**  
 DSK WENDY C31(P) (R/F)  
**DAM: SELECTED ANGUS COW**

Raw Data					
Weight	P8	Rib	EMA	IMF %	Scrotal
Purchaser				\$	



**60 ROSEDALE TROOPER (P)**  
 Born: 25/08/2022 Tag: XBT119  
 PALGROVE JAGUAR (AI) (ET) (P) (R/F)  
**SIRE: MINNIE-VALE QUIZMASTER (P) (R/F)**  
 MINNIE - VALE SONG L107 (P) (R/F)  
**DAM: TWYNAM ANGUS COW**

Raw Data					
Weight	P8	Rib	EMA	IMF %	Scrotal
Purchaser				\$	



**61 ROSEDALE TIGER (P)**  
 Born: 28/07/2022 Tag: XBT91  
 PALGROVE JAGUAR (AI) (ET) (P) (R/F)  
**SIRE: MINNIE-VALE QUIZMASTER (P) (R/F)**  
 MINNIE - VALE SONG L107 (P) (R/F)  
**DAM: HAZLEDEAN COW**

Raw Data					
Weight	P8	Rib	EMA	IMF %	Scrotal
Purchaser				\$	



**62 ROSEDALE THOR (P)**  
 Born: 19/07/2022 Tag: XBT90  
 PALGROVE JAGUAR (AI) (ET) (P) (R/F)  
**SIRE: MINNIE-VALE QUIZMASTER (P) (R/F)**  
 MINNIE - VALE SONG L107 (P) (R/F)  
**DAM: HAZLEDEAN COW**

Raw Data					
Weight	P8	Rib	EMA	IMF %	Scrotal
Purchaser				\$	





# COMPOSITE BULLS

**63 ROSEDALE TITAN (P)**

Born: 24/07/2022 Tag: XBT93

PALGROVE JAGUAR (AI) (ET) (P) (R/F)  
**SIRE: MINNIE-VALE QUIZMASTER (P) (R/F)**  
 MINNIE - VALE SONG L107 (P) (R/F)

**DAM: HAZLEDEAN COW**

Raw Data					
Weight	P8	Rib	EMA	IMF %	Scrotal
Purchaser				\$	



**64 ROSEDALE TELSTRA (P)**

Born: 26/08/2022 Tag: XBT272

PALGROVE JAGUAR (AI) (ET) (P) (R/F)  
**SIRE: MINNIE-VALE QUIZMASTER (P) (R/F)**  
 MINNIE - VALE SONG L107 (P) (R/F)

**DAM: TWYNAM ANGUS COW**

Raw Data					
Weight	P8	Rib	EMA	IMF %	Scrotal
Purchaser				\$	



**65 ROSEDALE TOGA (P)**

Born: 07/08/2022 Tag: XBT297

TEMANA GOLD LOGIE (P) (R/F)  
**SIRE: DSK MITCH M44**  
 DSK WENDY C31(P) (R/F)

**DAM: SELECTED ANGUS COW**

Raw Data					
Weight	P8	Rib	EMA	IMF %	Scrotal
Purchaser				\$	



**66 ROSEDALE TONIC (P)**

Born: 29/07/2022 Tag: XBT106

TEMANA GOLD LOGIE (P) (R/F)  
**SIRE: DSK MITCH M44 (P) (R/F)**  
 DSK WENDY C31(P) (R/F)

**DAM: TWYNAM ANGUS COW**

Raw Data					
Weight	P8	Rib	EMA	IMF %	Scrotal
Purchaser				\$	





**67 ROSEDALE TRACTION (P)**

Born: 015/08/2022 Tag: XBT133

TEMANA GOLD LOGIE (P) (R/F)  
**SIRE: DSK LOTTABULL**  
 DSK WENDY C31(P) (R/F)

**DAM: SELECTED ANGUS COW** \_\_\_\_\_

Raw Data					
Weight	P8	Rib	EMA	IMF %	Scrotal
Purchaser				\$	



**68 ROSEDALE TRIMBLE (P)**

Born: 2/9/2022 Tag: XBT109

TEMANA GOLD LOGIE (P) (R/F)  
**SIRE: DSK MITCH M44**  
 DSK WENDY C31(P) (R/F)

**DAM: SELECTED ANGUS COW** \_\_\_\_\_

Raw Data					
Weight	P8	Rib	EMA	IMF %	Scrotal
Purchaser				\$	



**69 ROSEDALE TIDAL (P)**

Born: 15/08/2022 Tag: XBT135

PALGROVE JAGUAR (AI) (ET) (P) (R/F)  
**SIRE: MINNIE-VALE QUIZMASTER (P) (R/F)**  
 MINNIE - VALE SONG L107 (P) (R/F)

**DAM: SELECTED ANGUS COW** \_\_\_\_\_

Raw Data					
Weight	P8	Rib	EMA	IMF %	Scrotal
Purchaser				\$	



**70 ROSEDALE TRUMAN (P)**

Born: 27/08/2022 Tag: XBT102

TEMANA GOLD LOGIE (P) (R/F)  
**SIRE: DSK LOTTABULL**  
 DSK WENDY C31(P) (R/F)

**DAM: SELECTED ANGUS COW** \_\_\_\_\_

Raw Data					
Weight	P8	Rib	EMA	IMF %	Scrotal
Purchaser				\$	





# COMPOSITE BULLS

**71 ROSEDALE TEXAN (P)**  
 Born: 11/8/2022 Tag: XBT127  
 TEMANA GOLD LOGIE (P) (R/F)  
**SIRE: DSK MITCH M44**  
 DSK WENDY C31(P) (R/F)  
**DAM: SELCECTED ANGUS COW**

Raw Data					
Weight	P8	Rib	EMA	IMF %	Scrotal
Purchaser				\$	



**72 ROSEDALE TINT (P)**  
 Born: 10/09/2022 Tag: XBT138  
 TEMANA GOLD LOGIE (P) (R/F)  
**SIRE: DSK MITCH M44**  
 DSK WENDY C31(P) (R/F)  
**DAM: SELECTED ANGUS COW**

Raw Data					
Weight	P8	Rib	EMA	IMF %	Scrotal
Purchaser				\$	



**73 ROSEDALE TROJAN (P)**  
 Born: 19/08/2022 Tag: XBT83  
 PALGROVE JAGUAR (AI) (ET) (P) (R/F)  
**SIRE: MINNIE-VALE QUIZMASTER (P) (R/F)**  
 MINNIE - VALE SONG L107 (P) (R/F)  
**DAM: SELECTED ANGUS COW**

Raw Data					
Weight	P8	Rib	EMA	IMF %	Scrotal
Purchaser				\$	



**74 ROSEDALE TOPSIDE (P)**  
 Born: 02/08/2022 Tag: XBT90  
 TEMANA GOLD LOGIE (P) (R/F)  
**SIRE: DSK MITCH M44**  
 DSK WENDY C31(P) (R/F)  
**DAM: SELECTED ANGUS COW**

Raw Data					
Weight	P8	Rib	EMA	IMF %	Scrotal
Purchaser				\$	







**75 ROSEDALE TOFFEE (P)**

**Born:** 10/09/2022      **Tag:** XBT93

TEMANA GOLD LOGIE (P) (R/F)  
**SIRE: DSK MITCH M44**  
 DSK WENDY C31(P) (R/F)

**DAM: SELECTED ANGUS COW** \_\_\_\_\_

Raw Data					
Weight	P8	Rib	EMA	IMF %	Scrotal

**Purchaser** \_\_\_\_\_ \$ \_\_\_\_\_



**76 ROSEDALE TUMUT (P)**

**Born:** 15/9/2022      **Tag:** XBT99

TEMANA GOLD LOGIE (P) (R/F)  
**SIRE: DSK MITCH M44**  
 DSK WENDY C31(P) (R/F)

**DAM: SELECTED ANGUS COW** \_\_\_\_\_

Raw Data					
Weight	P8	Rib	EMA	IMF %	Scrotal

**Purchaser** \_\_\_\_\_ \$ \_\_\_\_\_



**77 ROSEDALE TWITCH (P)**

**Born:** 20/07/2022      **Tag:** XBT473

ROSEDALE HARRY (P)  
**SIRE: ROSEDALE QUEST (P)**  
 ROSEDALE EMPRESS J167 (P)

**DAM: SELECTED SHORTHORN COW** \_\_\_\_\_

Raw Data					
Weight	P8	Rib	EMA	IMF %	Scrotal

**Purchaser** \_\_\_\_\_ \$ \_\_\_\_\_



**78 ROSEDALE THURSTY**

**Born:** 25/07/2022      **Tag:** XBT479

ROSEDALE HARRY (P)  
**SIRE: ROSEDALE MONTREAL (P)**  
 ROSEDALE HONOR J254 (P)

**DAM: SELECTED SHORTHORN COW** \_\_\_\_\_

Raw Data					
Weight	P8	Rib	EMA	IMF %	Scrotal

**Purchaser** \_\_\_\_\_ \$ \_\_\_\_\_





# COMPOSITE BULLS

**79 ROSEDALE THUNDER (P)**  
 Born: 26/07/2022 Tag: XBT481  
 SILVERSTREAM LANDMARK (P)  
**SIRE: ROSEDALE PIVOTAL (P)**  
 ROSEDALE ROSE L155 (P)  
**DAM: SELECTED SHORTHORN COW** \_\_\_\_\_

Raw Data					
Weight	P8	Rib	EMA	IMF %	Scrotal
Purchaser				\$	



**80 ROSEDALE TUGBOAT (P)**  
 Born: 14/7/2022 Tag: XBT467  
 ROSEDALE HARRY (P)  
**SIRE: ROSEDALE QUEST (P)**  
 ROSEDALE EMPRESS J167 (P)  
**DAM: SELECTED SHORTHORN COW** \_\_\_\_\_

Raw Data					
Weight	P8	Rib	EMA	IMF %	Scrotal
Purchaser				\$	



**81 ROSEDALE TINDER (P)**  
 Born: 14/07/2022 Tag: XBT489  
 ROSEDALE FAIRLANE (P)  
**SIRE: ROSEDALE LAWS (P)**  
 ROSEDALE BUTTERSCOTCH H240 (P)  
**DAM: SELECTED SHORTHORN COW** \_\_\_\_\_

Raw Data					
Weight	P8	Rib	EMA	IMF %	Scrotal
Purchaser				\$	



**82 ROSEDALE TUNDRA (P)**  
 Born: 11/07/2022 Tag: XBT485  
 ROSEDALE HARRY (P)  
**SIRE: ROSEDALE MACCOY**  
 ROSEDALE BOBBON G3 (P)  
**DAM: SELECTED SHORTHORN COW** \_\_\_\_\_

Raw Data					
Weight	P8	Rib	EMA	IMF %	Scrotal
Purchaser				\$	





**83 ROSEDALE TWIGGY (P)**

**Born:** 04/08/2022      **Tag:** XBT491

ROSEDALE H168 (P)  
**SIRE: ROSEDALE NEWTON JOHN (P)**  
 ROSEDALEREBECCA J143 (P)

**DAM: SELECTED SHORTHORN COW** \_\_\_\_\_

Raw Data					
Weight	P8	Rib	EMA	IMF %	Scrotal

**Purchaser** \_\_\_\_\_ \$ \_\_\_\_\_



**84 ROSEDALE TREASURER (P)**

**Born:** 19/08/2022      **Tag:** XBT484

ROSEDALE H168 (P)  
**SIRE: ROSEDALE NEWTON JOHN (P)**  
 ROSEDALEREBECCA J143 (P)

**DAM: SELECTED SHORTHORN COW** \_\_\_\_\_

Raw Data					
Weight	P8	Rib	EMA	IMF %	Scrotal

**Purchaser** \_\_\_\_\_ \$ \_\_\_\_\_



**85 ROSEDALE TREASON (P)**

**Born:** 14/08/2022      **Tag:** XBT494

SILVERSTREAM LANDMARK  
**SIRE: ROSEDALE PIVOTAL**  
 ROSEDALE ROSE L155 (P)

**DAM: SELECTED SHORTHORN COW** \_\_\_\_\_

Raw Data					
Weight	P8	Rib	EMA	IMF %	Scrotal

**Purchaser** \_\_\_\_\_ \$ \_\_\_\_\_



**86 ROSEDALE TWIX (P)**

**Born:** 07/08/2022      **Tag:** XBT480

ROSEDALE H168 (P)  
**SIRE: ROSEDALE NEWTON JOHN (P)**  
 ROSEDALEREBECCA J143 (P)

Raw Data					
Weight	P8	Rib	EMA	IMF %	Scrotal

**Purchaser** \_\_\_\_\_ \$ \_\_\_\_\_





# COMPOSITE BULLS

**87**      **ROSEDALE TURBO (P)**

**Born:** 16/08/2022      **Tag:** XBT497

ROSEDALE HARRY (P)  
**SIRE: ROSEDALE NATIVE**  
 ROSEDALE BOBBON G3 (P)

**DAM: SELECTED SHORTHORN COW**

Raw Data					
Weight	P8	Rib	EMA	IMF %	Scrotal

**Purchaser**      \$



**88**      **ROSEDALE TOASTY (P)**

**Born:** 09/8/2022      **Tag:** XBT951

SILVERSTREAM LANDMARK  
**SIRE: ROSEDALE PIVOTAL**  
 ROSEDALE ROSE L155 (P)

**DAM: SELECTED SHORTHORN COW**

Raw Data					
Weight	P8	Rib	EMA	IMF %	Scrotal

**Purchaser**      \$





## 89 ROSEDALE BEATRIX U3 (AI) (P)

Born: 11/03/2023

Society ID: MR23U3E

LT LEDGER 0332 (P)  
 LT SUNDANCE (P)  
 LT BALLET 9219 (I)P  
**Sire: LT VISTA 5319 (P)**  
 LT LONG DISTANCE (P)  
 LT ATHENA 2040 (P)  
 LT BLUE ATHENA (P)

ROSEDALE DEALER (P)  
 ROSEDALE MAVERICK (AI) (ET) (P)  
 ROSEDALE CANDY G304 (P)  
**Dam: ROSEDALE BEATRIX R207 (P)**  
 ASCOT DOC SILVER G100E (P)  
 ROSEDALE BEATRIX K61 (P)  
 ROSEDALE BEATRIX G231 (P)



Charolais Group Breedplan EBV's									
DIR	GL	BWT	200	400	600	MILK	DOM		
+0.7	-3.0	-1.3	+10	+27	+30	+11		+\$24	
39%	43%	68%	59%	58%	56%	38%			
SS	CWT	EMA	RIB	RMP	RBY	IMF	MAT		
+2.0	+20	+0.9	+1.5	+2.0	-1.1	+0.4		+\$55	
37%	46%	35%	44%	44%	40%	44%			
Purchaser					\$				

**Top 20% BWT, RIB & RUMP FAT, Top 15% MILK, TOP 25% IMF**

A top young heifer by LT vista out of an up and coming young Maverick daughter. Will make a lovely feminine cow with loads of milk. Unjoined and comes with a 12 month breeding guarantee.

## 90 ROSEDALE REBECCA U5 (AI) (P)

Born: 13/03/2023

Society ID: MR23U5E

PALGROVE CARBINE (P)  
 PALGROVE MANDATE (AI) (P)  
 PALGROVE  
**Sire: ROSEDALE QUANDARY (P)**  
 ROSEDALE FIRST CLASS (P)  
 ROSEDALE RUBY K227 (P)  
 ROSEDALE RUBY E143 (P)

SVY PILGRIM (P)  
 ROSEDALE HARRY (AI) (P)  
 ROSEDALE CANDY C36 (P)  
**Dam: ROSEDALE REBECCA Q159 (P)**  
 ROSEDALE DARWIN (P)  
 ROSEDALE REBECCA G123 (P)  
 ROSEDALE REBECCA C29 (P)



Charolais Group Breedplan EBV's									
DIR	GL	BWT	200	400	600	MILK	DOM		
+4.5	-1.0	+0.4	+15	+25	+34	+6		+\$28	
39%	45%	70%	56%	64%	59%	36%			
SS	CWT	EMA	RIB	RMP	RBY	IMF	MAT		
+1.3	+18	+1.1	+0.4	+0.7	-0.3	+0.5		+\$46	
42%	50%	32%	39%	38%	42%	41%			
Purchaser					\$				

**Top 20% IMF, Top 25% CE**

A very nice Quandary daughter who is thick and soft. The heaviest of the group at weaning. Unjoined and comes with a 12 month breeding guarantee.

## 91 ROSEDALE CANDY U6 (AI) (P)

Born: 09/03/2023

Society ID: MR23U6E

SPARROWS DURANGO (P)  
 WINN MANS LANZA  
 WINN MANS MERIT  
**Sire: ROSEDALE JUKE (AI) (P)**  
 FERNVALE TRAPPER  
 ROSEDALE REBECCA A 38 (P)  
 ROSEDALE REBECCA V56 (P)

ROSEDALE FAIRLANE (P)  
 ROSEDALE KAVIAR (P)  
 ROSEDALE NET E58 (AI) (P)  
**Dam: ROSEDALE CANDY Q190 (P) (R/F)**  
 ROSEDALE ZINGER (P)  
 ROSEDALE CANDY G304 (P) (R/F)  
 MEDBURN W20 (P)



Charolais Group Breedplan EBV's - SIRE VERIFIED - BPA & MYO FREE									
DIR	GL	BWT	200	400	600	MILK	DOM		
+4.3	-3.7	-0.3	+18	+31	+46	+14		+\$33	
39%	68%	68%	60%	57%	56%	40%			
SS	CWT	EMA	RIB	RMP	RBY	IMF	MAT		
+1.9	+24	+1.2	+0.7	+0.6	-0.1	-0.1		+\$61	
35%	44%	31%	40%	40%	47%	45%			
Purchaser					\$				

**Top 10% 200 Day, Top 15% 400 & 600 Day, cwt, Top 5% MILK**

A wonderful young prospect representing the top of our herd. 3 donor cows used here at Rosedale sit in her pedigree representing a great opportunity. Unjoined and comes with a 12 month breeding guarantee.



# CHAROLAIS HEIFERS

## 92 ROSEDALE KRISTINA U7 (AI) (P)

Born: 08/03/2023

Society ID: MR23U7E

PALGROVE CARBINE (P)  
 PALGROVE MANDATE (AI) (P)  
 PALGROVE  
**Sire: ROSEDALE QUANDARY (P)**  
 ROSEDALE FIRST CLASS (P)  
 ROSEDALE RUBY K227 (P)  
 ROSEDALE RUBY E143 (P)

ROSEDALE FAIRLANE (P)  
 ROSEDALE KAVIAR (P)  
 ROSEDALE NET E58 (AI) (P)  
**Dam: ROSEDALE KRISTINA Q209 (P)**  
 ROSEDALE HARRY (AI) (P)  
 ROSEDALE KRISTINA K279 (P)  
 ROSEDALE KRISTINA G13 (P)



Charolais Group Breedplan EBV's									
DIR	GL	BWT	200	400	600	MILK	DOM		
+6.6	-4.8	-0.9	+16	+23	+33	+7		+\$28	
39%	43%	70%	59%	58%	56%	38%			
SS	CWT	EMA	RIB	RMP	RBY	IMF	MAT		
+1.3	+14	+0.4	+0.7	+1.1	-0.9	+0.8		+\$43	
37%	46%	35%	44%	44%	40%	35%			
Purchaser					\$				

**Top 25% BWT, GL, Top 20% 200 Day, CE, Top 10% IMF**

A heifer with a big future by the very impressive Rosedale Quandary. Combining femininity with high quality carcass traits. Unjoined and comes with a 12 month breeding guarantee.

## 93 ROSEDALE HIGHNESS U8 (AI) (P)

Born: 15/03/2023

Society ID: MR23U8E

PINAY (P)  
 PALGROVE EXPO (P)  
 PALGROVE ESTELLA 130 (AI) (P)  
**Sire: ROSEDALE KAYDEN (P)**  
 FERNVALE TRAPPER  
 ROSEDALE EMPRESS B188 (P)  
 ROSEDALE EMPRESS S66 (P)

ROSEDALE DEALER (P)  
 ROSEDALE MAVERICK (AI) (ET) (P)  
 ROSEDALE CANDY G304 (P)  
**Dam: ROSEDALE HIGHNESS Q73 (P)**  
 PALGROVE EXPO (P)  
 ROSEDALE HIGHNESS J178 (P)  
 ROSEDALE HIGHNESS D279 (P)



Charolais Group Breedplan EBV's									
DIR	GL	BWT	200	400	600	MILK	DOM		
-2.8	-1.1	+1.0	+19	+30	+46	+4		+\$28	
39%	45%	70%	56%	64%	59%	36%			
SS	CWT	EMA	RIB	RMP	RBY	IMF	MAT		
+1.6	+22	+1.3	+1.0	+1.2	0.1	+0.1		+\$47	
42%	50%	32%	39%	38%	42%	45%			
Purchaser					\$				

**Top 10% 200, top 20% 400 & 600 Day, top 25% Rib Fat**

A thicker made heifer with some fantastic growth and carcass traits. Lovely topline and head carriage and will make a very productive cow. Unjoined and comes with a 12 month breeding guarantee.

## 94 ROSEDALE GOLDEN GIRL U9 (P) (R/F)

Born: 12/04/2023

Society ID: MR23U9E

SILVERSTREAM EVOLUTION (P)  
 PALGROVE JAGUAR (ET) (P)  
 PALGROVE LEONIE 23 (AI) (ET) (P)  
**Sire: MINNIE-VALE QUIZMASTER (P) (R/F)**  
 MOONGOOL GOLD DUST (P)  
 MINNIE-VALE SONG L107 (P) (R/F)  
 MINNIE VALE SONG G40 (P)

ROSEDALE DEALER (P)  
 ROSEDALE MAVERICK (AI) (ET) (P)  
 ROSEDALE CANDY G304 (P)  
**Dam: ROSEDALE GOLDEN GIRL Q80 (P)**  
 ROSEDALE DARWIN (P)  
 ROSEDALE GOLDEN GIRL K130 (P)  
 ROSEDALE GOLDEN GIRL G60 (P)



Charolais Group Breedplan EBV's									
DIR	GL	BWT	200	400	600	MILK	DOM		
-1.6	+0.3	+2.1	+14	+23	+36	+3		+\$30	
39%	50%	70%	60%	57%	56%	40%			
SS	CWT	EMA	RIB	RMP	RBY	IMF	EXP		
+0.4	+17	+1.6	+1.1	+1.3	-0.2	+0.4		+\$67	
35%	44%	31%	40%	40%	36%	32%			
Purchaser					\$				

**Top 25% Rib and Rump Fat, IMF**

A soft and sweet Quizmaster beauty. I really like this heifer and think she is one of the picks. Growth, style and very well structured.

# CHAROLAIS HEIFERS



## 95 ROSEDALE BUTTERSCOTCH U10 (P) R/F

Born: 05/04/2023

Society ID: MR23U10E

PINAY (P)  
PALGROVE EXPO (P)  
PALGROVE ESTELLA 130 (AI) (P)  
**Sire: ROSEDALE KAYDEN (P)**  
FERNVALE TRAPPER  
ROSEDALE EMPRESS B188 (P)  
ROSEDALE EMPRESS S66 (P)

PALGROVE CHARM (AI) (ET) (P)  
PALGROVE HALLMARK (AI) (P) (R/F)  
ROSEDALE GRACE A97 (AI) (ET) (P)  
**Dam: ROSEDALE BUTTERSCOTCH N297 (P)**  
GUNNADOO YUPPY (P)  
ROSEDALE BUTTERSCOTCH F68 (P)  
ROSEDALE BUTTERSCOTCH Y47 (P)



### Charolais Group Breedplan EBV's

DIR	GL	BWT	200	400	600	MILK	DOM
+1.7	-2.1	+1.0	+9	+20	+27	+3	+\$19
39%	43%	70%	59%	58%	56%	38%	
SS	CWT	EMA	RIB	RMP	RBY	IMF	EXP
+0.6	+16	+1.2	+0.7	+0.8	-0.2	+0.2	+\$26
37%	46%	35%	44%	44%	40%	40%	

Purchaser		\$
-----------	--	----

A quality young heifer we know will go on to make a lovely cow. Feminine, soft and very well natured. Unjoined and comes with a 12 month breeding guarantee.

## 96 ROSEDALE BOBBIN U11 (P) (R/F)

Born: 10/04/2023

Society ID: MR23U11E

SILVERSTREAM EVOLUTION (P)  
PALGROVE JAGUAR (ET) (P)  
PALGROVE LEONIE 23 (AI) (ET) (P)  
**Sire: MINNIE-VALE QUIZMASTER (P) (R/F)**  
MOONGOOL GOLD DUST (P)  
MINNIE-VALE SONG L107 (P) (R/F)  
MINNIE VALE SONG G40 (P)

ROSEDALE FRONTLINE (P)  
ROSEDALE JUNO (AI) (ET) (P/S)  
ROSEDALE REBECCA A38 (P)  
**Dam: ROSEDALE BOBBIN L258 (P)**  
ROSEDALE ZINGER (P)  
ROSEDALE BOBBIN C 23 (P)  
ROSEDALE BOBBIN Z106 (P)

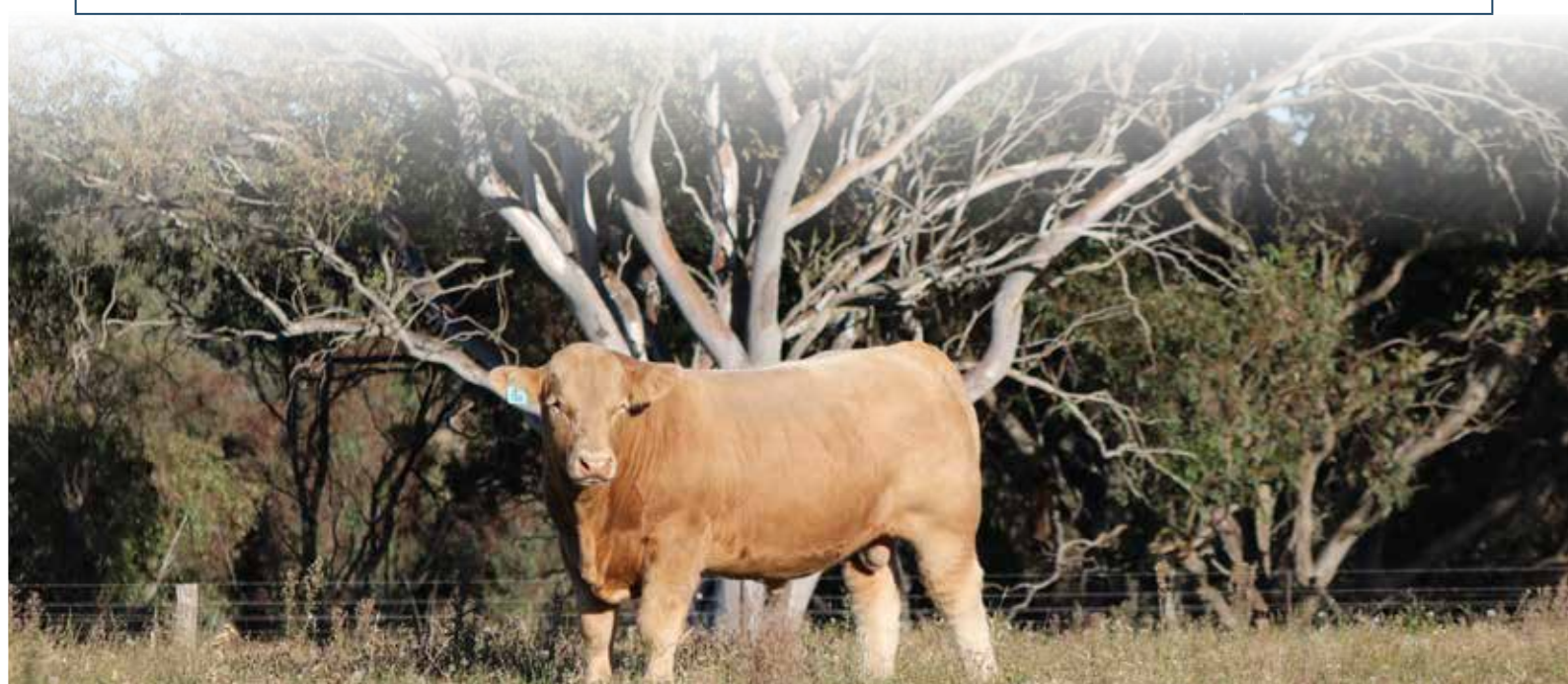


### Charolais Group Breedplan EBV's

DIR	GL	BWT	200	400	600	MILK	DOM
-5.2	+1.6	+2.2	+12	+22	+34	+5	+\$31
39%	45%	70%	56%	64%	59%	36%	
SS	CWT	EMA	RIB	RMP	RBY	IMF	EXP
0.0	+15	+0.6	+0.1	-0.1	0.0	0.3	+\$39
42%	50%	32%	39%	38%	42%	32%	

Purchaser		\$
-----------	--	----

A classy and thick yet feminine heifer by Quizmaster. L258 has been a very consistent producer for us and is a deep fleshy cow with a great udder. We expect Bobbin to grow into a lovely cow.





'Rosedale Charolais' 126 Rosedale Road, Browns Creek via Blayney NSW 2799

James Millner m: 0425 341 341 e: millner@rosedalecharolais.com.au

Michael & Jenny Millner m: 0409 682 339 p: (02) 6368 7195

**[www.rosedalecharolais.com.au](http://www.rosedalecharolais.com.au)**

