



GOLDSTAR
GENETICS

Invitational Sale

◆ **Beef 2024** ◆



H. FRANCIS & CO. PTY. LTD. STOCK STATION AND REAL ESTATE AGENTS

rma network.

Accredited Member

Stud Sales

Paddock Sales

Over the hook sales

Direct to Feedlot Sales

AuctionsPlus Sales

Clearing Sales

Rural Property Sales

For any of your livestock or property needs
contact one of our friendly agents.

Alex Croker 0428 326 810 Scott Myers 0428 763 434

Matt Hawker 0418 861 320 Tim Francis 0428 263 852

Jeff Francis 0418 694 556 Corey Parker 0458 363 131

David Kosa 0432 064 188 Pat McCrohon 0407 029 845

Sam Sutton 0448 080 607 Lach Woodhouse 0428 287 150

4/41-43 Moorong St

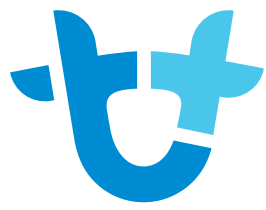
Wagga Wagga NSW 2650

Ph: 6921 6366

Fax: 6921 6493

Email: livestock@hfrancisandco.com.au

www.hfrancisandco.com.au



AuctionsPlus

How to Register as an AuctionsPlus user

1. To sign up to AuctionsPlus, fill in your details and create a password.
2. Verify your email.
3. Follow the steps to verify your ID.
4. Enter your PIC number, ABN and business details if relevant.
5. Carefully read and accept our user rules and responsibilities.
6. Complete the user quiz.
7. Submit your request to our team.



Scan to sign up now



Scan to see detailed
step by step instructions



Vendors



2 FG Charolais
Steve Franco
0407 599 567

Charolais



3R Livestock
Geoff Birchnell
0412 425 949
3rbeef.com.au

Angus

Brenair Park
Dexter Sullivan
0408 716 558

Fleckvieh, Simmental



Caloona Charolais
Steve Franco
0407 599 567

Charolais



DARAABAH
Fleischvieh • Simmental

Daraabah Simmental
Bruce McColl
0429 750 590
daraabah.com.au
Simmental



Dehavalyn Murray Greys
Tom Ernst
0400 385 289

Murray Grey



GK Livestock
Kirrily Johnson-Iseppi
0427 790 652
gklivestock.com
Red Angus, Simmental



Goldstar Genetics
Steve Martin
0435 092 023
goldstargenetics.com.au
**Angus, Simmental,
Murray Grey**



KO Angus
Tim Lord
0417 406 036
koangus.com.au
Angus

MAEFAIR
Murray Greys

Maefair Murray Greys
Guy Burnett
0429 600 337

Murray Grey



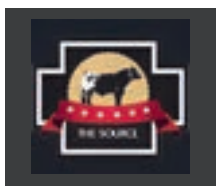
Myona Charolais
Steve Martin
0435 092 023

Charolais



Silverstream Charolais
Brent Fisher
+643 329 0994
silverstreamcharolais.co.nz

Charolais



Six Star Speckle Park
Greg Ebbeck
0418 286 661
specklepark.com.au

Speckle Park



Summit Livestock
Hayden Green
0400 570 758
summitlivestock.com.au

**Angus, Limousin,
Simmental**



Truro Herefords
Scott Hann
0427 937 839
truroherefords.com

Hereford



Winkel Park
Vanessa Selleck
0417 886 556

Charolais

Will Kelly
0411 180 757

Angus

FIND US HERE:

E07

GOLDSTAR
GENETICS

029-031

AuctionsPlus



Sale Information

INSPECTIONS All animals will be available for inspection on-site at Beef24 from Monday 6th of May through to the close of the sale. The supplementary sheet will be made available on-site at the Goldstar Site E7 in the exhibition hall. It will also be available via the Auctions Plus sale listing prior to the start of the sale and on www.goldstargenetics.com.au.

HERD HEALTH All animals listed for sale are tested as Pestivirus PI-negative. All animal lots listed are from herds that are a minimum of J-BAS score 6.

TRANSFERS The transfer of animals on the NLIS database will be handled by the selling agents H Francis and Co. Purchasers of registered animals that wish to have them transferred to their membership on the breed database must confirm this with the vendor they are purchasing from.

INSURANCE Purchases become the responsibility of the successful buyer at the end of Beef24. While all care will be taken by the vendors, it is recommended all buyers insure their purchases through their preferred insurer. Insurance can also be organised on-site via the sales office.

TRANSPORT & DELIVERY Transport cost and organization is the responsibility of the purchaser. All live lots will be available for delivery at the conclusion of Beef24. Buyers to liaise with the selling agent Scott Meyers (0428 763 434) and Goldstar Genetics representative Steve Martin (0435 092 023) regarding transport. Various livestock carriers will be available to assist in delivery of purchases.

ONLINE BIDDING The live auction will be interfaced with Auctions Plus for online bidding only. Please follow the Auctions Plus instructions found in the catalogue. *****PLEASE NOTE:** It is recommended that first time users allow a minimum of 48 hours prior to the sale to register. Please refer to Auctions Plus sale terms and conditions.

.PLEASE NOTE:** All sale lots are sold exclusive of GST**

Sale Catalogue Disclaimer. All lot details included in this catalogue, including but not limited to pedigree, DNA information, Estimated Breeding Values (EBVs, Index values and/or Estimated Progeny Differences (EPDs), are based on information provided by the breeder or owner of the animal. Data submitted to the Breed Societies may have errors in it which cannot be detected without further DNA testing. Whilst all reasonable care has been taken to ensure that the information provided in this catalogue was correct at the time of publication, neither the vendor, Goldstar Genetics, or the selling agents assume any responsibility for the accuracy or completeness of the information, nor for the outcome (including consequential loss) of any action taken based on this information.

WELCOME

Goldstar Genetics and the other vendors welcome you to the Goldstar Genetics Invitational Sale Beef24. We have endeavoured to offer you a high-end multi-breed genetics sale with a variety of elite genetic opportunities. The vendors have gone deep into their breeding programs to offer you some of the best genetics available in Australia and overseas.

All live lots will be shown at Beef 2024 and will be available for inspection in the cattle show sheds all week. The vendors or their representatives will be on hand at Beef to answer any questions. Selling Agent Scott Myers from H Francis & Co will also be available at Beef or ph. 0428 763 434 to assist you in your selections. Goldstar Genetics will also be on site at E7 in the exhibition hall. We thank you for your interest in our sale and please don't hesitate to call Goldstar Genetics, the other vendors or Scott Myers with any enquiries.



Invitational Sale

◆ Beef 2024 ◆

Lot
1

COLEMAN DONNA 9309
x
CONNEALY CRAFTSMAN

3R Livestock

Angus
5 embryos

3rbeef.com.au



Embryos Sire: CONNEALY CRAFTSMAN 20132505



Donor: COLEMAN DONNA 9309 19583466

3R is proud to offer a unique opportunity combining two of the most exciting young Angus animals in the USA today. Coleman Donna 9309 was the result of an extensive search for THE Angus female to accelerate the 3R program into the future. Backed to the Coleman Donna family, that needs no introduction to the Angus world, Donna 9309 is bred in the black with a double cross to the immortal Donna 714. She is sired by the \$450,000 Coleman Bravo 6313 and a flush mate to the \$150,000 Coleman Banker & high use calving ease sire Coleman Night Watch. There is proven genetic excellence at every level of this pedigree. Note the extra performance across the EPD profile. 9309 progeny have excelled in the USA, at just 4yo, with exceptional progeny on the ground, the best is yet to come.

Sire, Connealy Craftsman, was the \$500,000 high selling bull of 2023 and has been highly anticipated across the Angus breed. The combination of 9309 x Craftsman could be expected to deliver progeny with unsurpassed maternal strength yet maintaining a high level of performance. A rare opportunity to access renowned outcross genetics from two of the USA's finest. Selling 5 IVF Embryos with a guarantee of 2 pregnancies if implanted by a certified embryologist.

Buyer:

Price:

- SITZ STELLAR 726D
- SITZ RESILIENT 10208
- SITZ MISS BURGESS 1856
- CONNEALY CRAFTSMAN
- CONNEALY NIOBRARA 5451
- BLACK GATHY OF CONANGA 8521
- BLACK CARLA OF CONANGA 450

- COLEMAN CHARLO 0256
- COLEMAN BRAVO 6313
- COLEMAN DONNA 714
- COLEMAN DONNA 9309
- CONNEALY THUNDER
- COLEMAN DONNA 4203
- COLEMAN DONNA 714

	CED	BW	WW	YW	RADC	SC	HP	CEM	MW	Milk	Doc	Claw	Angle	CW	Marb	RE	Fat	\$M	\$W	\$F	\$G	\$B	\$C
Dam: EBV	+15	-0.3	+68	+134	+0.3	+62	+17.5	+11	+63	+34	+33	+28	+34	+49	+43	+58	-0.009	+94	+72	+91	+43	+134	+268
Dam: Acc	0.33	0.47	0.4	0.37	0.41	0.38	0.26	0.33	0.38	0.33	0.36	0.36	0.31	0.35	0.35	0.32	0.28						
Dam: Perc	2%	20%	25%	10%	15%	65%	4%	25%	40%	10%	1%	1%	2%	30%	30%	45%	20%	1%	1%	1%	1%	1%	1%
Sire: EBV	+5	+1.7	+80	+139	+0.3	+62	+19.2	+5	+38	+39	+24	+40	+42	+57	+115	+93	+0.016	+107	+87	+99	+82	+181	+342
Sire: Acc	0.72	0.92	0.81	0.66	0.28	0.67	0.3	0.34	0.45	0.35	0.67	0.52	0.5	0.51	0.45	0.45	0.45						
Sire: Perc	60%	60%	15%	15%	10%	65%	2%	80%	75%	2%	25%	15%	20%	30%	10%	15%	55%	1%	2%	35%	10%	15%	2%



Lot **2** x **KO WILCOOLA S109 PV**
HART NETWORK
 KO Angus

Angus
 4 embryos
 koangus.com.au



Embryos Sire: HART NETWORK 20488998

Selling 4 Vytelle IVF embryos sired by the hot new outcross AI sire Hart Network out of KO Wilcoola S109, if you're looking for breed leading data in an exciting cutting edge genetic package look no further this mating is in the very top 1% of the breed for all \$indexes.



Donor: KO WILCOOLA S109 PV NZC215109

- CHERRY CREEK LAND GRANT
- CONNEALY CLARITY
- BRESHIE OF CONANGA 6988
- HART NETWORK
- HOOVER NO DOUBT
- HART WHITNEY 9518
- HART WHITNEY 3206

Buyer:

Price:

- G A R ASHLANDPV
- G A R HOME TOWNPV
- CHAIR ROCK SURE FIRE 6095#
- KO WILCOOLA S109 PV
- LAWSON'S MOMENTOUS M518PV
- KO WILCOOLA Q105PV
- KO WILCOOLA N112PV

	Calving Ease Dir	Calving Ease Dtrs	Gestation Length	Birth Weight	200 Day Growth	400 Day Weight	600 Day Weight	Mat Cow Weight	Milk	Scrotal Size	Docility	Carcase Weight	Eye Muscle Area	Rib Fat	Rump Fat	Retail Beef Yield	IMF	Claw Set	Foot Angle	Leg Angle			
EBV	3	0.8	-3.8	4	56	98	113	76	11	2.3	26	57	14.9	0.8	1.5	0.5	5.5	1.14	1.14	0.94			
Acc	0.71	0.63	0.83	0.83	0.84	0.83	0.83	0.8	0.76	0.81	0.79	0.73	0.73	0.72	0.73	0.65	0.76	0.71	0.71	0.67			
Perc	44%	73%	60%	50%	25%	33%	64%	86%	90%	43%	29%	79%	1%	29%	20%	47%	3%	94%	84%	23%			
EPD	+12	+1.4	+85	+147	+26	+1.31	+14.8	+9	+39	+30	+20	+38	+43	+67	+1.47	+99	+0.54	+103	+90	+102	+96	+199	+361
Acc	0.34	0.51	0.44	0.39	0.34	0.43	0.26	0.32	0.37	0.31	0.36	0.31	0.31	0.41	0.39	0.38	0.34						
Perc	10%	55%	5%	10%	50%	25%	25%	45%	80%	25%	45%	10%	25%	15%	3%	10%	95%	1%	1%	25%	3%	5%	1%



Lot **3** x **KO DREAM J45 PV**
HART NETWORK or **BALDRIDGE VERSATILE**
 KO Angus

Angus
 4 embryos
 koangus.com.au



- CHERRY CREEK LAND GRANT
- CONNEALY CLARITY
- BRESHIE OF CONANGA 6988
- HART NETWORK
- HOOVER NO DOUBT
- HART WHITNEY 9518
- HART WHITNEY 3206



- G A R PROPHET
- BALDRIDGE FORECASTER B160
- BALDRIDGE PRATISSA W165
- BALDRIDGE VERSATILE
- HOOVER DAM
- BALDRIDGE BLACKBIRD A030
- BALDRIDGE BLACKBIRD X89



Donor: KO DREAM J45 PV NZCJ45

- S A V FINAL ANSWER 0035#
- S A V PIONEER 7301#
- S A V BLACKBIRD 5297#
- KO DREAM J45 PV
- TE MANIA UNLIMITED U3271#
- VERMONT DREAM Y301PV
- BANQUET DREAM Q117*95#

Selling 4 Vytelle IVF embryos sired by the buyers choice of sires either Hart Network or Baldrige Versatile, we rate Dream J45 as one of Y301's best daughters, she is a maternal sister to two previous Australian record priced females and is admired by all who inspect her, she has bred sale topping sons and show winning daughters, you choose which sire you want either the high marbling versatile or the highest indexing sire in the breed Hart Network.

Buyer:

Price:

	Calving Ease Dir	Calving Ease Dtrs	Gestation Length	Birth Weight	200 Day Growth	400 Day Weight	600 Day Weight	Mat Cow Weight	Milk	Scrotal Size	Docility	Carcase Weight	Eye Muscle Area	Rib Fat	Rump Fat	Retail Beef Yield	IMF	Claw Set	Foot Angle	Leg Angle			
EBV	-2.7	7.4	-3.1	5	51	103	131	137	8	2.5	6	65	5.9	-1.4	-1.9	1.2	1.6	1.12	1.04	1.02			
Acc	0.78	0.69	0.89	0.91	0.9	0.89	0.88	0.86	0.86	0.86	0.79	0.82	0.8	0.81	0.81	0.76	0.81	0.75	0.75	0.7			
Perc	84%	10%	71%	72%	52%	20%	26%	9%	97%	36%	94%	58%	55%	78%	76%	12%	67%	92%	65%	46%			
EPD	+12	+1.4	+85	+147	+26	+1.31	+14.8	+9	+39	+30	+20	+38	+43	+67	+1.47	+99	+0.54	+103	+90	+102	+96	+199	+361
Acc	0.34	0.51	0.44	0.39	0.34	0.43	0.26	0.32	0.37	0.31	0.36	0.31	0.31	0.41	0.39	0.38	0.34						
Perc	10%	55%	5%	10%	50%	25%	25%	45%	80%	25%	45%	10%	25%	15%	3%	10%	95%	1%	1%	25%	3%	5%	1%
EPD	+10	+5	+76	+139	+29	+1.12	+13.5	+4	+91	+14	+39	+55	+54	+49	+1.85	+33	+0.06	+56	+56	+91	+111	+202	+318
Acc	0.76	0.92	0.89	0.82	0.42	0.8	0.4	0.46	0.45	0.35	0.78	0.62	0.59	0.53	0.48	0.48	0.47						
Perc	25%	35%	20%	15%	20%	90%	30%	85%	20%	95%	1%	75%	80%	45%	1%	85%	40%	65%	60%	50%	1%	3%	5%



Lot **4** x **KO MOONGARRA L75 SV**
BALDRIDGE SR GOALKEEPER
 KO Angus

Angus
 4 embryos
 koangus.com.au



Selling 4 conventional embryos, these embryos are the same mating that topped our heart of the herd embryo offering selling for \$2,600 per embryo, this mating represents sale topping genetics L75 was the \$50,000 top selling female in our heart of the herd sale, 3 of her sons have been high selling bulls being sold up to \$100,000 two of which have been AI sires. Goalkeeper needs little introduction his sons have sold to \$110,000



Embryos Sire: BALDRIDGE SR GOALKEEPER 19356243

Donor: KO MOONGARRA L75 SV NZCL75

- SYDGEN EXCEED 3223
- SYDGEN ENHANCE
- SYDGEN RITA 2618
- BALDRIDGE SR GOALKEEPER
- CONNELLY CONFIDENCE PLUS
- BALDRIDGE ISABEL E030
- BALDRIDGE ISABEL Y69

Buyer:
 Price:

- SCHURRTOP REALITY X723#
- MATAURI REALITY 839#
- MATAURI 06663#
- KO MOONGARRA L75 SV
- CONNELLY EARNAN 076EPV
- KO MOONGARRA J84SV
- KO MOONGARRA F27#

	Calving Ease Dir	Calving Ease Dtrs	Gestation Length	Birth Weight	200 Day Growth	400 Day Weight	600 Day Weight	Mat Cow Weight	Milk	Scrotal Size	Docility	Carcase Weight	Eye Muscle Area	Rib Fat	Rump Fat	Retail Beef Yield	IMF	Claw Set	Foot Angle	Leg Angle			
EBV	4	3.8	-6.1	3.8	51	84	103	81	10	3.9	14	51	9	2.5	3.2	0.1	2.7	0.56	0.64	0.84			
Acc	0.77	0.68	0.87	0.92	0.92	0.9	0.88	0.86	0.81	0.88	0.78	0.81	0.8	0.8	0.81	0.75	0.81	0.71	0.71	0.69			
Perc	34%	43%	24%	45%	51%	74%	83%	81%	93%	7%	78%	90%	21%	7%	7%	72%	37%	6%	2%	6%			
	CED	BW	WW	YW	RADG	SC	HP	CEM	MW	Milk	Doc	Claw	Angle	CW	Marb	RE	Fat	\$M	\$W	\$F	\$G	\$B	\$C
EPD	+4	+1.7	+6.5	+1.31	+3.4	+1.49	+11.3	+2	+7.7	+2.5	+2.9	+4.3	+3.7	+4.6	+1.10	+9.1	+0.01	+6.0	+5.4	+9.8	+8.1	+17.9	+29.2
Sire	Acc	0.8	0.94	0.91	0.87	0.5	0.84	0.54	0.64	0.55	0.55	0.76	0.7	0.56	0.51	0.5	0.51						
	Perc	70%	60%	45%	25%	4%	15%	55%	95%	35%	60%	10%	25%	10%	55%	10%	15%	35%	55%	70%	35%	10%	15%



Lot **5** **KO MOONGARRA L75 SV**
 Will Kelly

Reg N^o: NZCL75
 D.O.B.: 27/07/2015

Angus
 Flush



Selling the right to one flush of KO Moongarra L75 either by conventional or IVF. L75 was purchased as the \$50,000 top selling female of the KO Angus heart of the herd female sale, she has produced three high selling bulls of which two have been AI sires, including the \$100k KO Teleporter T243 who is one of the highest indexing bulls bred in Australia. L75's embryos topped the heart of the herd sale selling for \$2,600 per embryo. L75 is available to flush now !!! The purchaser has the right to flush her to the bull of their choice. All associated costs are to be paid by the purchaser. Vendor guarantees a minimum of 4 embryos and a maximum of 12 embryos by conventional flushing methods. A minimum of 6 embryos and a maximum of 20 if flushed by IVF.

- SCHURR 77 1346 EXCEL#
- SCHURRTOP REALITY X723#
- SCHURRTOP 8019 V141#
- Sire: MATAURI REALITY 839#
- TE MANIA ULONG U41SV
- MATAURI 06663#
- MATAURI 04456 AB#
- CONNELLY CONSENSUS#
- CONNELLY EARNAN 076EPV
- BRAZILA OF CONANGA 3991 839A#
- Dam: KO MOONGARRA J84SV
- HYLINE RIGHT TIME 338#
- KO MOONGARRA F27#
- WALLAROO MOONGARRA X125SV

Buyer: Price:

	Calving Ease Dir	Calving Ease Dtrs	Gestation Length	Birth Weight	200 Day Growth	400 Day Weight	600 Day Weight	Mat Cow Weight	Milk	Scrotal Size	Docility	Carcase Weight	Eye Muscle Area	Rib Fat	Rump Fat	Retail Beef Yield	IMF	Claw Set	Foot Angle	Leg Angle
EBV	4	3.8	-6.1	3.8	51	84	103	81	10	3.9	14	51	9	2.5	3.2	0.1	2.7	0.56	0.64	0.84
Acc	0.77	0.68	0.87	0.92	0.92	0.9	0.88	0.86	0.81	0.88	0.78	0.81	0.8	0.8	0.81	0.75	0.81	0.71	0.71	0.69
Perc	34%	43%	24%	45%	51%	74%	83%	81%	93%	7%	78%	90%	21%	7%	7%	72%	37%	6%	2%	6%



Lot 6 **Pick of the 2023 Spring Angus Calf Crop at Summit Livestock** **Angus**
Summit Livestock www.summitlivestock.com.au



We have been stacking together some exciting genetics over the past few years in our Angus herd with a strong focus on phenotype, performance and longevity. We have had some great interest in our Angus breeding program and we wanted to offer a very special lot from the heart of our Angus program for the Beef 2024 sale so, we decided to let you be the judge – Take your pick of our entire Spring'23 drop of registered Angus calves! The winning bid is able to come and take their pick of all Summit registered Angus calves born between 1st August and 30th September 2023. This includes all the calves in our spring ET and AI programs. Sires include Browns Double Decker, Mill Brae Benchmark, Knowla So Right, Woodhill Blueprint, Hoffman High Road, Bruns Blaster and more. Cow families include Bara, Federation, Blackbird, Ester, Jedda, Dream, Moongara, Kite and more. Selection must be made by June 2024. Prior inspections of our herd and donors are welcome, please contact Summit Livestock to arrange a visit.



Buyer: Price:

Lot 7 **WILBAR JUNCTURE 45J** **Angus**
Goldstar Genetics **10 semen straws**
Reg N^o: 2206303 goldstargenetics.com.au
D.O.B: 08/02/2021



Juncture is the 2022 Canadian Angus Show Bull of the year. He is sired by the international champion, Conley South Point 8362 who was the only bull to win the prestigious Canadian Western Agribition and Denver Stock show in the same show season. His dam is no stranger to producing high quality progeny. Numerous sons and daughters have topped Wilbar Cattle Co annual sales. She also has the second highest weaning index in the entire Canadian Angus Registry at 118 and is a CAA Elite/Premier dam. Juncture progeny are extremely long bodied, big topped and deep ribbed. This is the first lot of semen to be sold in Australia.

- RITO 707 OF IDEAL 3407 7075 2069908
- STEVENSON TURNING POINT 1977035
- STEVENSON PRIDE 1167X US16607377
- Sire: CONLEY SOUTH POINT 8362 2099027
- S A V NET WORTH 4200 1309743
- P R LADY 909 4200-587 US16676486
- P R 587 205-537 US14479550
- PLAINVIEW LUTTON E102 US14819576
- PLEASANT VALLEY LUTE 1207 1781195
- CHERRY KNOLL ELSA 8014 US16206707
- Dam: WILBAR MAYFLOWER 409E 1980601
- WILBAR TIGERSHARK 420Y 1630027
- WILBAR MAYFLOWER 507B 1815843
- WILBAR MAYFLOWER 48Z 1701304

Buyer: Price:

	Calving Ease	Mat Calving Ease	Birth Weight	Weaning Weight	Yearling Weight	Mature Weight	Milk	Scrotal Circ.	Docility	Carcase Weight	REA	Fat	Claw	Angle
EPD	+8.0	+4.0	+1.7	+56	+93	+51	+27	+0.32	0	+44	+0.78	-0.02	+0.48	+0.49
Acc	0.25	0.17	0.35	0.3	0.25	0.14	0.18	0.11	0.07	0.17	0.16	0.12	0.05	0.05
Perc	15%	80%	40%	40%	50%	60%	20%	85%	99%	45%	10%	4%	70%	70%

Canada EPD*



Lot **8** **WILBAR JUNCTURE 45J**
Goldstar Genetics

Reg N^o: 2206303
D.O.B: 08/02/2021

Angus
10 semen straws
goldstargenetics.com.au



Juncture is the 2022 Canadian Angus Show Bull of the year. He is sired by the international champion, Conley South Point 8362, who was the only bull to win the prestigious Canadian Western Agribition and Denver Stock show in the same show season. His dam is no stranger to producing high quality progeny. Numerous sons and daughters have topped Wilbar Cattle Co annual sales. She also has the second highest weaning index in the entire Canadian Angus Registry at 118 and is a CAA Elite/Premier dam. Juncture progeny are extremely long bodied, big topped and deep ribbed. This is the first lot of semen to be sold in Australia.

RITO 707 OF IDEAL 3407 7075 2069908
STEVENSON TURNING POINT 1977035
STEVENSON PRIDE 1167X US16607377
Sire: CONLEY SOUTH POINT 8362 2099027
S A V NET WORTH 4200 1309743
P R LADY 909 4200-587 US16676486
P R 587 205-537 US14479550

PLAINVIEW LUTTON E102 US14819576
PLEASANT VALLEY LUTE 1207 1781195
CHERRY KNOLL ELSA 8014 US16206707
Dam: WILBAR MAYFLOWER 409E 1980601
WILBAR TIGERSHARK 420Y 1630027
WILBAR MAYFLOWER 507B 1815843
WILBAR MAYFLOWER 48Z 1701304

Buyer: Price:

	Calving Ease	Mat Calving Ease	Birth Weight	Weaning Weight	Yearling Weight	Mature Weight	Milk	Scrotal Circ.	Docility	Carcase Weight	REA	Fat	Claw	Angle
EPD	+8.0	+4.0	+1.7	+56	+93	+51	+27	+0.32	0	+44	+0.78	-0.02	+0.48	+0.49
Acc	0.25	0.17	0.35	0.3	0.25	0.14	0.18	0.11	0.07	0.17	0.16	0.12	0.05	0.05
Perc	15%	80%	40%	40%	50%	60%	20%	85%	99%	45%	10%	4%	70%	70%

Canada EPD*



Lot **9** **WILBAR JUNCTURE 45J**
Goldstar Genetics

Reg N^o: 2206303
D.O.B: 08/02/2021

Angus
10 semen straws
goldstargenetics.com.au



Juncture is the 2022 Canadian Angus Show Bull of the year. He is sired by the international champion, Conley South Point 8362, who was the only bull to win the prestigious Canadian Western Agribition and Denver Stock show in the same show season. His dam is no stranger to producing high quality progeny. Numerous sons and daughters have topped Wilbar Cattle Co annual sales. She also has the second highest weaning index in the entire Canadian Angus Registry at 118 and is a CAA Elite/Premier dam. Juncture progeny are extremely long bodied, big topped and deep ribbed. This is the first lot of semen to be sold in Australia.

RITO 707 OF IDEAL 3407 7075 2069908
STEVENSON TURNING POINT 1977035
STEVENSON PRIDE 1167X US16607377
Sire: CONLEY SOUTH POINT 8362 2099027
S A V NET WORTH 4200 1309743
P R LADY 909 4200-587 US16676486
P R 587 205-537 US14479550

PLAINVIEW LUTTON E102 US14819576
PLEASANT VALLEY LUTE 1207 1781195
CHERRY KNOLL ELSA 8014 US16206707
Dam: WILBAR MAYFLOWER 409E 1980601
WILBAR TIGERSHARK 420Y 1630027
WILBAR MAYFLOWER 507B 1815843
WILBAR MAYFLOWER 48Z 1701304

Buyer: Price:

	Calving Ease	Mat Calving Ease	Birth Weight	Weaning Weight	Yearling Weight	Mature Weight	Milk	Scrotal Circ.	Docility	Carcase Weight	REA	Fat	Claw	Angle
EPD	+8.0	+4.0	+1.7	+56	+93	+51	+27	+0.32	0	+44	+0.78	-0.02	+0.48	+0.49
Acc	0.25	0.17	0.35	0.3	0.25	0.14	0.18	0.11	0.07	0.17	0.16	0.12	0.05	0.05
Perc	15%	80%	40%	40%	50%	60%	20%	85%	99%	45%	10%	4%	70%	70%

Canada EPD*



Lot **10** **WILBAR JUNCTURE 45J**
Goldstar Genetics

Reg N^o: 2206303
D.O.B: 08/02/2021

Angus
10 semen straws
goldstargenetics.com.au



Juncture is the 2022 Canadian Angus Show Bull of the year. He is sired by the international champion, Conley South Point 8362, who was the only bull to win the prestigious Canadian Western Agribition and Denver Stock show in the same show season. His dam is no stranger to producing high quality progeny. Numerous sons and daughters have topped Wilbar Cattle Co annual sales. She also has the second highest weaning index in the entire Canadian Angus Registry at 118 and is a CAA Elite/Premier dam. Juncture progeny are extremely long bodied, big topped and deep ribbed. This is the first lot of semen to be sold in Australia.

RITO 707 OF IDEAL 3407 7075 2069908
STEVENSON TURNING POINT 1977035
STEVENSON PRIDE 1167X US16607377
Sire: CONLEY SOUTH POINT 8362 2099027
S A V NET WORTH 4200 1309743
P R LADY 909 4200-587 US16676486
P R 587 205-537 US14479550

PLAINVIEW LUTTON E102 US14819576
PLEASANT VALLEY LUTE 1207 1781195
CHERRY KNOLL ELSA 8014 US16206707
Dam: WILBAR MAYFLOWER 409E 1980601
WILBAR TIGERSHARK 420Y 1630027
WILBAR MAYFLOWER 507B 1815843
WILBAR MAYFLOWER 48Z 1701304

Buyer: Price:

	Calving Ease	Mat Calving Ease	Birth Weight	Weaning Weight	Yearling Weight	Mature Weight	Milk	Scrotal Circ.	Docility	Carcase Weight	REA	Fat	Claw	Angle
EPD	+8.0	+4.0	+1.7	+56	+93	+51	+27	+0.32	0	+44	+0.78	-0.02	+0.48	+0.49
Acc	0.25	0.17	0.35	0.3	0.25	0.14	0.18	0.11	0.07	0.17	0.16	0.12	0.05	0.05
Perc	15%	80%	40%	40%	50%	60%	20%	85%	99%	45%	10%	4%	70%	70%

Canada EPD*



Lot **11** **WILBAR JUNCTURE 45J**
Goldstar Genetics

Reg N^o: 2206303
D.O.B: 08/02/2021

Angus
10 semen straws
goldstargenetics.com.au



Juncture is the 2022 Canadian Angus Show Bull of the year. He is sired by the international champion, Conley South Point 8362, who was the only bull to win the prestigious Canadian Western Agribition and Denver Stock show in the same show season. His dam is no stranger to producing high quality progeny. Numerous sons and daughters have topped Wilbar Cattle Co annual sales. She also has the second highest weaning index in the entire Canadian Angus Registry at 118 and is a CAA Elite/Premier dam. Juncture progeny are extremely long bodied, big topped and deep ribbed. This is the first lot of semen to be sold in Australia.

RITO 707 OF IDEAL 3407 7075 2069908
STEVENSON TURNING POINT 1977035
STEVENSON PRIDE 1167X US16607377
Sire: CONLEY SOUTH POINT 8362 2099027
S A V NET WORTH 4200 1309743
P R LADY 909 4200-587 US16676486
P R 587 205-537 US14479550

PLAINVIEW LUTTON E102 US14819576
PLEASANT VALLEY LUTE 1207 1781195
CHERRY KNOLL ELSA 8014 US16206707
Dam: WILBAR MAYFLOWER 409E 1980601
WILBAR TIGERSHARK 420Y 1630027
WILBAR MAYFLOWER 507B 1815843
WILBAR MAYFLOWER 48Z 1701304

Buyer: Price:

	Calving Ease	Mat Calving Ease	Birth Weight	Weaning Weight	Yearling Weight	Mature Weight	Milk	Scrotal Circ.	Docility	Carcase Weight	REA	Fat	Claw	Angle
EPD	+8.0	+4.0	+1.7	+56	+93	+51	+27	+0.32	0	+44	+0.78	-0.02	+0.48	+0.49
Acc	0.25	0.17	0.35	0.3	0.25	0.14	0.18	0.11	0.07	0.17	0.16	0.12	0.05	0.05
Perc	15%	80%	40%	40%	50%	60%	20%	85%	99%	45%	10%	4%	70%	70%

Canada EPD*



Lot **12** x **KOYLE ECHO 104**
DUFF-JC 4REAL
 Goldstar Genetics

Angus
 3 embryos

goldstargenetics.com.au



Embryos Sire: DUFF-JC 4REAL 18983584



Donor: KOYLE ECHO 104 2221207

Imported embryos from Canada. A very exciting joining. Koyle Echo 104 is known as real maternal masterpiece. The Echo family is known for their power and picture perfect udders. Duff-JC 4Real is known to add muscle, length, style and massive rib shape. Selling 3 embryos with no guarantee possible.

- DUFF DISTINCTION 9105
- DUFF NAPOLEON 232
- DUFF EUR 443 MERLE 808
- DUFF-JC 4REAL
- DUFF AMIGO 815
- DUFF AMIGO 927K JUANADA 071
- O C C JUANADA 927K

Buyer:

Price:

- S A V PRESIDENT 6847 2022643
- S A V AMERICA 8018 2161873
- S A V MADAME PRIDE 0075 US13592871
- KOYLE ECHO 104
- BAR-E-L NATURAL LAW 52Y 1629829
- PM ECHO 816 1911685
- HF ECHO 111Y 1627481

	Calving Ease	Mat Calving Ease	Birth Weight	Weaning Weight	Yearling Weight	Mature Weight	Milk	Scrotal Circ.	Docility	Carcase Weight	REA	Fat	Claw	Angle
Dam Canada EPD	+0.5	+0.5	+4.3	+72	+124	+84	+24	+1.21	+27	+56	+0.73	-0.002	+0.39	+0.44
Acc	P	P	P	P	P	P	P	P	P	P	P	P	P	P
Top	70%	95%	92%	7%	8%	15%	45%	15%	8%	15%	15%	15%	25%	40%
Sire USA EPD	+8	+6	+58	+99	+23	-0.72	+161	+5	+17	+20	+13	+41	+40	+24
Acc	0.43	0.83	0.77	0.66	0.31	0.64	0.09	0.27	0.35	0.32	0.63	0.12	0.12	0.41
Perc	40%	35%	65%	70%	65%	95%	10%	80%	90%	85%	75%	20%	15%	90%



Lot **13** x **WILBAR RUBY 722C**
CONLEY SOUTH POINT 8362
 Goldstar Genetics

Angus
 3 embryos

goldstargenetics.com.au



Embryos Sire: CONLEY SOUTH POINT 8362 2099027



Donor: WILBAR RUBY 722C 1868774

Imported embryos from Canada. 722c hails from the famous Wilbar Ruby cow family that produced the immortal HF Kodiak JR. They are very maternal with great productivity. Conley South Point 8362 was the rockstar of the showing, winning grand champion bull at both the Canadian Agribition and National Western Sock show in the US. In the paddock, his rockstar performance continues. A calving ease bull with high performance. He is the definition of 'balanced', in figures and phenotype. A full sister to these embryos blazed a trail through the Canadian show circuit in the summer of 2021. Offering 3 embryos with no guarantee possible.

- PLATTEMERE WEIGH UP K360 1778294
- STEVENSON TURNING POINT 1977035
- STEVENSON PRIDE 1167X US16607377
- CONLEY SOUTH POINT 8362
- S A V NET WORTH 4200 1309743
- P R LADY 909 4200-587 US16676486
- P R 587 205-537 US14479550

Buyer:

Price:

- PLAINVIEW LUTTON E102 US14819576
- PLEASANT VALLEY LUTE 1207 1781195
- CHERRY KNOLL ELSA 8014 US16206707
- WILBAR RUBY 722C
- EARLY SUNSET HIGH TIME 47G 880455
- WILBAR RUBY 313K 999756
- WILBAR RUBY 552X 666895

	Calving Ease	Mat Calving Ease	Birth Weight	Weaning Weight	Yearling Weight	Mature Weight	Milk	Scrotal Circ.	Docility	Carcase Weight	REA	Fat	Claw	Angle
Dam Canada EPD	0	+5.0	+2.8	+43	+70	-	+24	+0.27	+10	+31	+0.43	+0.009	+0.49	+0.50
Acc	0.24	0.26	0.45	0.39	0.35	-	0.37	P	P	0.19	0.16	0.12	P	P
Top	80%	75%	65%	80%	85%	-	45%	91%	85%	80%	65%	35%	75%	75%
Sire Canada EPD	+11.0	+9.0	+0.1	+58	+91	+37	+25	+0.56	-6	+26	+0.77	-0.001	+0.51	+0.45
Acc	0.71	0.54	0.88	0.83	0.73	0.45	0.51	0.53	0.41	0.5	0.45	0.44	0.31	0.31
Top	6%	30%	10%	35%	55%	80%	35%	75%	99%	90%	10%	20%	80%	45%



Lot **14** x **GK RED 1B PLATINUM RUBA P26 (RED)**
RED MRLA RESOURCE 137E
 GK Livestock

Red Angus
 3 embryos
 gklivestock.com



Embryos Sire: RED MRLA RESOURCE 137E 1955865



Donor: GK RED 1B PLATINUM RUBA P26 (RED) QFCP26

This pairing of P26 and Resource will produce some special individuals and this sale will be the only time GK Livestock offers embryos from this joining. Donor Dam Platinum Ruba was the Beef 2021 Grand Champion Red Angus Female and stood top four in the Interbreed Champion female at Beef that same year. She's a big, broody, deep bodied cow, who has progeny already residing in stud herds in four states of the country. Her first three progeny sold by GK averaged \$14,000 at weaning age. The Sire Red MRLA Resource 137E does not have semen available on the open market in Australia and is an outcross Canadian red bull combining some of North America's top Angus genetics. He's out of two black, red carrier parents combining SAV Harvester and SAV Resource in his pedigree. Resulting calves can be dual registered in the Herdbook of both the Red Angus Society of Australia and Angus Australia. Embryos collected by Dr Peter Atkinson, The Repro Group, Allora Qld and stored with same. Vendor offers a 33% pregnancy guarantee if implant is completed by a mutually agreed upon vet and implanted within 12 months of purchase. Selling 3 x A grade embryos

- S A V RESOURCE 1441 1707295
- MRLA RELOAD 56C 1881524 (RC)
- RED MRLA MISS 641Y 1628509
- RED MRLA RESOURCE 137E
- S A V HARVESTER 0338 1633982
- MRLA MISS 4422B 1810687 (RC)
- MRLA MISS 433T 1373334 (RC)

- RED SOO LINE POWER EYE 161X (RED)#
- RED DOUBLE B BULLSEYE 1B (RED)#
- RED BLAIRS PRICILLA 44Z (RED)#
- GK RED 1B PLATINUM RUBA P26 (RED)
- RED FINE LINE MULBERRY 26P (RED)#
- GK RED RUBA 26 G40 (RED)PV
- RED HOWE MS. RUBA DDH 7H (RED)#

Buyer:
 Price:

	Calving Ease Dir	Calving Ease Dtrs	Gestation Length	Birth Weight	200 Day Growth	400 Day Weight	600 Day Weight	Mat. Cow Weight	Milk	Scrotal Size	Docility	Carcass Weight	Eye Muscle Area	Rib Fat	Rump Fat	Retail Beef Yield	IMF	Claw Set	Foot Angle	Leg Angle
Dam EPD	3.7	3.6	-3.5	4.2	44	79	99	105	13	2	27	49	3.9	0.4	1	1.1	-0.9	1.08	1.14	0.9
Australia Acc	0.6	0.46	0.83	0.81	0.8	0.78	0.78	0.74	0.68	0.74	0.67	0.66	0.64	0.65	0.65	0.55	0.69	0.47	0.49	0.41
EBV Top	37%	45%	65%	55%	80%	86%	87%	45%	83%	54%	25%	92%	78%	37%	27%	16%	99%	89%	84%	14%
	CE	MCE		BW	WW	YW		MW	Milk	SC	Doc	CW	REA	Fat				Claw	Angle	
Sire EPD	-2	-2		+3.6	+38	+85		+73	+26	+0.95	+14	+42	+0.41	+0.020				+0.31	+0.48	
Canada Acc	0.5	0.63		0.89	0.86	0.77		0.39	0.58	0.5	0.27	0.44	0.36	0.34				0.2	0.2	
EPD Top	80%	97%		85%	65%	25%		10%	35%	25%	50%	6%	40%	85%				2%	40%	



Lot **15** **MYONA STOPLIGHT S18 (AI) (P)**
 Winkel Park

Reg N^o: MYOS18E
 D.O.B.: 12/12/2021
 Age: 29 months
 HPS: Polled

Charolais
 Bull



Stoplight has a rock solid temperament, with maternal strength and performance, he has just come away from Sydney Royal as Champion Senior Bull for 2024. Judge Matt Spry's comments: "A big powerful well balanced bull, with plenty of grunt that covers a lot of ground, he will add carcass weight for age and shape to your herd". Stoplight is one of the only sires to be sold this year, by the outcross Silverstream National Sire. If you are looking for a top end sire, you should most definitely check him out at Beef 2024, Rockhampton.

- TINOR OAFX2275F (H)
- SILVERSTREAM JENSEN J19 (P) PEDK0019E (P)
- SILVERSTREAM DASHER E193 (P) PEDE193E (P)
- Sire: SILVERSTREAM NATIONAL N40 (P) OANN40E (P)
- SILVERSTREAM BENCHMARK B33 (P) OANB33E (P)
- SILVERSTREAM OPIE G8 (P) PEDG0008E (P)
- SILVERSTREAM OPIE C203 PEDC0203E (H)
- LT SILVER BAR 4216 P M686621 (P) (R/F) OAUZ4216E (P)
- MYONA KRACKA JACK K17 (AI) (P) MYOK17E (P)
- FERNVALE FANTASIA (AI) (ET) (P/S) FENF22E (S)
- Dam: MYONA LILLY N14 (P) MYON14E (P)
- CSS SIR GRIDMAKER 2W (P) OACE7387E (P)
- MYONA REGALITY GIRL L12 (AI) (P) MYOL12E (P)
- MYONA REGALITY 1 (P) (TW) MYOH10E (P)

Buyer: Price:

	CE	CED	GL	BW	200W	400W	600W	MCW	Milk	SC		CW	EMA	Rib	Rump	RBY	IMF
EBV	-9.1	1.6	-0.7	1.5	16	30	40	48	1	1.8		24	1.1	-0.9	-1.4	0.8	-0.4
Acc	0.44	0.39	0.72	0.71	0.65	0.63	0.65	0.56	0.51	0.66		0.52	0.44	0.52	0.51	0.44	0.43
Ave	1.2	0.8	-2.6	0.2	11	22	29	29	7	1		18	1.5	0.4	0.4	0.1	0.1



Lot **2FG TROUBLE (AI) (P)**
16
2 FG Charolais

Reg N°: SOF22T10
D.O.B: 13/09/2022
Age: 20 months
HPS: Polled

Charolais
Bull



2FG Trouble is a heifers first calf, he displays super length and sire appeal. He has softness and muscle with beautiful skin type and structure. He will suit a range of markets and polled as a added bonus with wonderful temperament. Don't let the name fool you.

PALGROVE VIAGRA (AI) (P) PKV92E (P)
PALGROVE CHARM (AI) (ET) (P) PKC1043E (P)
PALGROVE FESTOON 88 PKW120E (H)
Sire: PALGROVE HALLMARK (AI) (P) (R/F) PKH535E (P)
PALGROVE ZEALOUS (AI) (P) (R/F) PKZ129E (P)
PALGROVE ALYSSA 47 (P) (R/F) PKB835E (P)
PALGROVE ALYSSA 41 (TW) PKZ259E (H)
SVY PILGRIM PLD 6555 (P) OACB3031E (P)
DSK PGRM KAPPA K25E (AI) (P) DSKK25E (P)
VENTURON GORGEOUS (P) VE7G8E (P)
Dam: DSK K25 FLOSSY R30E (P) DSKR30E (P)
ANC KIND (P) ANCK155F (P)
DSK KIND FLOSSY N70E (P) DSKN70E (P)
DSK EDGE FLOSSY E50E (AI) (P) DSKE50E (P)

Buyer: Price:

	CE	CED	GL	BW	200W	400W	600W	MCW	Milk	SC	CW	EMA	Rib	Rump	RBV	IMF
EBV	-0.3	-2.1	-4.6	0.6	12	26	32	32	5	1.5	22	2.2	1.2	1.6	0	-0.4
Acc	0.49	0.47	0.65	0.67	0.66	0.64	0.63	0.59	0.56	0.63	0.54	0.49	0.56	0.55	0.5	0.49
Ave	1.2	0.8	-2.6	0.2	11	22	29	29	7	1	18	1.5	0.4	0.4	0.1	0.1



Lot **CALOONA PARK THOR (AI) (P)**
17
Caloona Charolais

Reg N°: LSF22T41
D.O.B: 08/09/2022
Age: 20 months
HPS: Polled

Charolais
Bull



Thor is a young poll sire with extra bone and a real sires head He is out of an exceptional cow who has found her way as a donor. He has a great skin type and structure that will go out and not let you down.

PALGROVE VIAGRA (AI) (P) PKV92E (P)
PALGROVE CHARM (AI) (ET) (P) PKC1043E (P)
PALGROVE FESTOON 88 PKW120E (H)
Sire: PALGROVE HALLMARK (AI) (P) (R/F) PKH535E (P)
PALGROVE ZEALOUS (AI) (P) (R/F) PKZ129E (P)
PALGROVE ALYSSA 47 (P) (R/F) PKB835E (P)
PALGROVE ALYSSA 41 (TW) PKZ259E (H)
AIRLIE KIT K127E (AI) (P) AISK127E (P)
CALOONA PARK NIKE AIR (P) (R/F) LSFN81E (P)
CALOONA PARK KAREN LSFK142E (H)
Dam: CALOONA PARK LOUISE R65 (P) (R/F) LSF65E (P)
AIRLIE FARLANE (P) (R/F) AISF735E (P)
CALOONA PARK LOUISE (P) LSF132E (P)
CALOONA PARK ZENITH 2 LSF118E (H)

Buyer: Price:

	CE	CED	GL	BW	200W	400W	600W	MCW	Milk	SC	CW	EMA	Rib	Rump	RBV	IMF
EBV	3.8	-0.7	-4.9	-0.1	8	17	15	21	3	1.1	16	2.3	0.7	1	0.5	-0.7
Acc	0.47	0.44	0.61	0.63	0.62	0.6	0.59	0.56	0.53	0.59	0.5	0.47	0.53	0.51	0.47	0.46
Ave	1.2	0.8	-2.6	0.2	11	22	29	29	7	1	18	1.5	0.4	0.4	0.1	0.1



Lot **18** **MYONA STARLIGHT S17 (AI) (P)**
Myona Charolais

Reg N^o: MYOS17E
D.O.B: 04/12/2021
Age: 29 months
HPS: Polled

Charolais
Bull



Myona Starlight has been used as a yearling over some of our commercial females. A very sound sire that covers a lot of ground. We admire the overall length and how well put together his front end is. If you are looking for an outcross sire, make sure you check this guy out.

TINOR OAFX2275F (H)
SILVERSTREAM JENSEN J19 (P) PEDK0019E (P)
SILVERSTREAM DASHER E193 (P) PEDE193E (P)
Sire: SILVERSTREAM NATIONAL N40 (P) OANN40E (P)
SILVERSTREAM BENCHMARK B33 (P) OANB33E (P)
SILVERSTREAM OPIE G8 (P) PEDG0008E (P)
SILVERSTREAM OPIE C203 PEDC0203E (H)

SPARROWS ALCATRAZ 18N PED-4009E
SVY GRIZZLY PLD 521C (P) OACL521E (P)
SVY SADIRA 155Y PEDG155E (H)
Dam: MYONA ROSLYN 2 P10 (AI) (P) MYOP10E (P)
CSS SIR GRIDMAKER 2W (P) OACE7387E (P)
MYONA ROSLYN K4 (AI) (P/S) MYOK4E (S)
ROSEDALE ROSLYN E187 MRE187E (H)

Buyer: Price:

	CE	CED	GL	BW	200W	400W	600W	MCW	Milk	SC	CW	EMA	Rib	Rump	RBV	IMF
EBV	-1.7	2.4	-3.1	0.2	9	23	31	23	2	1.5	21	1.5	0.1	-0.2	0.5	-0.2
Acc	0.44	0.38	0.73	0.69	0.62	0.6	0.61	0.54	0.51	0.56	0.5	0.42	0.51	0.5	0.44	0.42
Ave	1.2	0.8	-2.6	0.2	11	22	29	29	7	1	18	1.5	0.4	0.4	0.1	0.1



Lot **19** **MYONA TICK-TOCK T23E (AI) (P)**
Myona Charolais

Reg N^o: MY022T23E
D.O.B: 14/08/2022
Age: 21 months
HPS: Polled

Charolais
Bull



An outstanding National son that oozes a combination of softness and thickness. Tick-Tock is very 3 dimensional, stout sire with plenty of spring of rib and walks on good feet and legs. His Dam is one of the leading females at Myona that has a calf every year.

TINOR OAFX2275F (H)
SILVERSTREAM JENSEN J19 (P) PEDK0019E (P)
SILVERSTREAM DASHER E193 (P) PEDE193E (P)
Sire: SILVERSTREAM NATIONAL N40 (P) OANN40E (P)
SILVERSTREAM BENCHMARK B33 (P) OANB33E (P)
SILVERSTREAM OPIE G8 (P) PEDG0008E (P)
SILVERSTREAM OPIE C203 PEDC0203E (H)

SPARROWS ALCATRAZ 18N PED-4009E
SVY GRIZZLY PLD 521C (P) OACL521E (P)
SVY SADIRA 155Y PEDG155E (H)
Dam: MYONA FANTASIA O4E (AI) (P) MYOQ4E (P)
MVY XPLOER ZIX (P) OACF5798E (P)
MYONA FANTASIA M3 (AI) (P) MYOM3E (P)
MYONA FANTASIA I (P) MYOJ12E (P)

Buyer: Price:

	CE	CED	GL	BW	200W	400W	600W	MCW	Milk	SC	CW	EMA	Rib	Rump	RBV	IMF
EBV	-4	3	-0.3	0.6	8	20	28	24	3	1.2	18	1.3	0.3	0	0.2	-0.2
Acc	0.43	0.37	0.73	0.65	0.62	0.59	0.6	0.53	0.5	0.55	0.49	0.41	0.5	0.49	0.43	0.41
Ave	1.2	0.8	-2.6	0.2	11	22	29	29	7	1	18	1.5	0.4	0.4	0.1	0.1



LOT 20

AUSTRALIAN SEMEN RIGHTS FROM YOUR CHOICE OF SILVERSTREAM SIRES

Silverstream Charolais- Brent Fisher +643 329 0994 or +6427 251 4791

Offering the Australian semen rights from the pick of the Silverstream herd sires (excluding bulls already available in Australia). TERMS: Selection must be made within a month of the sale. Semen to be collected at purchasers expense. No maximum number of straws.

These are the sires available...



SILVERSTREAM ROCCO R26

HOMOZYGOUS POLLED.

SILVERSTREAM MANHATTAN X SILVERSTREAM CHARLOTTE N52



SILVERSTREAM REMBRANDT R84

HOMOZYGOUS POLLED.

SILVERSTREAM MANHATTAN X SILVERSTREAM ELSA J57



SILVERSTREAM SLOAN S48

HOMOZYGOUS POLLED.

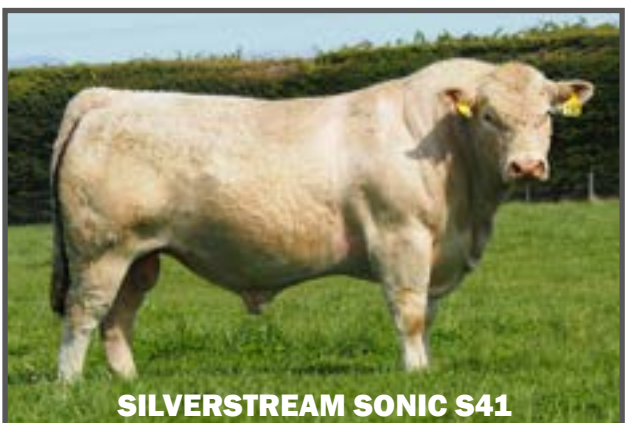
TURNBULLS DUTY-FREE X SILVERSTREAM CHANDLER P11



SILVERSTREAM SAINT MARTIN S177

HETEROZYGOUS POLLED.

SILVERSTREAM OPTICAL X SILVERSTREAM CHARM L210



SILVERSTREAM SONIC S41

HOMOZYGOUS POLLED.

OW LEAD TIME X SILVERSTREAM OCELOT P35



HEMINGFORD SILVERADO S97

HETEROZYGOUS POLLED.

HEMINGFORD NEXT DIRECTION X HEMINGFORD H51

Lot **21** x **MYONA PENNY R15 (AI) (P)**
SVY TRUST 6H (P) OACR2307E (P)*
 Winkel Park

Charolais
6 embryos



Myona Penny was purchased as our foundation cow, and wow has she produced. Penny is undefeated in her class at two Sydney Royal's. Her first heifer (by SVY Trust) has recently been awarded Reserve Champion Female at Sydney Royal for 2024. Many astute judges have said she's very thick, deep and well put together. The sire SVY Trust alone from a young age was an absolute standout, capturing the attention of breeders from all around the world. This marriage has proven to produce plenty of depth, capacity, power and softness, and should not be overlooked. Selling 6 embryos, vendor offers a 33% pregnancy guarantee if implant is completed by a mutually agreed upon vet.



Embryos Sire: SVY TRUST 6H (P) OACR2307E (P)* OACR2307E

Donor: MYONA PENNY R15 (AI) (P) MYORISE

- M6 COOL REP 8108 PEDE701E (D)
- M6 BELLS & WHISTLES 258 (P) PEDH5299E (P)*
- M6 MS GAIN & GRADE 552 (P) PEDG2277E (P)
- SVY TRUST 6H (P) OACR2307E (P)*
- TR PZC MR TURTON 0794 ET (P) OAU987E (P)
- SVY STARSTRUCK 409B (P) OACK2578E (P)*
- SVY STARSTRUCK 8X (P) OACF8E (P)

Buyer:

Price:

- BLUE GATE PARK LEVI (ET) (P) (R/F) BGFL2E (P)
- CALOONA PARK NUGGET (P) (R/F) LSFN61E (P)
- CALOONA PARK KAILEY (R/F) LSFK124E (H)
- MYONA PENNY R15 (AI) (P)
- MVY XPLORER 21X (P) OACF5798E (P)
- MYONA PENNY N3 (AI) (P) MYON3E (P)
- MYONA REGALITY 1 (P) (TW) MYOH10E (P)

	CE	CED	GL	BW	200W	400W	600W	MCW	Milk	SC		CW	EMA	Rib	Rump	RBY	IMF
Dam: EBV	-5.3	-	-0.4	0.6	14	23	36	41	9	1.2		17	-	1	1.2	-	-
Dam: Acc	0.28	-	0.69	0.5	0.42	0.39	0.38	0.35	0.25	0.34		0.27	-	0.26	0.25	-	-
Dam: Ave	1.2	0.8	-2.6	0.2	11	22	29	29	7	1		18	1.5	0.4	0.4	0.1	0.1
Sire: EBV	-5.9	-	-4.9	-0.7	+5	+16	+19	+17	+6	+2.0		+10	-0.4	+1.6	+1.4	-1	-0.4
Sire: Acc	0.36	-	0.7	0.68	0.59	0.58	0.55	0.48	0.36	0.58		0.41	0.35	0.45	0.43	0.36	0.34
Sire: Ave	+1.2	+0.8	-2.6	+0.2	+11	+22	+29	+29	+7	+1.0		+18	+1.5	+0.4	+0.4	+0.1	+0.1



Lot **22** **SILVERSTREAM SUZE M5**
 Myona Charolais & Winkel Park

Reg N^o: 083160005E
 D.O.B: 27/02/2016
 HPS: Polled

Charolais
Flush



Suze was the top price female from the Silverstream Female sale in 2024, also the dam of the NZ record breaking bull Silverstream Spectra who sold for \$65,000 last year. Suze is a very sweet, deep sided red factor female that is structurally flawless. We are very excited to see her calves Down Under! The successful buyer will get the choice out of the following sires to use: National, Padra, President, Sandown, Jehu, Duty Free, Wyoming Wind, Pinay or LAE Troubadour a new bull from Canada. Embryos will be collected once she calves later this year. If sold outside Australia or NZ a quarantine and delivery fee may apply. All associated costs are to be paid by the purchaser. Vendor guarantees a minimum of 4 embryos and a maximum of 6. Vendor offers a 33% pregnancy guarantee if implant is completed by a mutually agreed upon vet.

- SILVERSTREAM BRUMBY B89 083060089E
- SILVERSTREAM EVOLUTION E168 083090168E
- SILVERSTREAM GLOSSY S120 083010120G
- Sire: SILVERSTREAM HOMELAND H3 083120003E*
- KAIRUA TOM T1 050020001E
- SILVERSTREAM OCELOT A30 083050030E
- SILVERSTREAM OCELOT U20 083030020E
- SILVERSTREAM BRUMBY B89 083060089E
- SILVERSTREAM EVOLUTION E168 083090168E
- SILVERSTREAM GLOSSY S120 083010120G
- Dam: SILVERSTREAM SUZE H11 083120011E*
- SVS NOBLEMAN Z5N (IMP CAN) CAMC276733
- SILVERSTREAM SUZE D8 083080008E
- SILVERSTREAM JULIE P25 083990025G

Buyer: Price:

	CE	CED	GL	BW	200W	400W	600W	MCW	Milk	SC		CW	EMA	Rib	Rump	RBY	IMF
EBV	-2.6	-1.5	+1.1	+4.5	+15	+32	+49	+62	-1	+1.0		+25	+1.9	-0.3	-0.5	+0.9	-0.1
Acc	0.59	0.52	0.75	0.83	0.8	0.79	0.8	0.72	0.78	0.77		0.69	0.58	0.67	0.65	0.59	0.57
Ave	+0.0	+1.3	-2.5	+0.8	+14	+29	+40	+44	+6	+1.3		+24	+1.5	+0.3	+0.2	+0.2	+0.0



Lot **23** **SILVERSTREAM OCELOT R190**
Myona Charolais & Winkel Park

Reg N°: 083200190E
D.O.B: 29/09/2020
HPS: Polled

Charolais
Flush



After seeing this 3yr old we knew we had to have her! Not only for being a very attractive National daughter but also for her pedigree. Her dam is one of the "top Matriarch cows" in the Silverstream herd with some amazing calves including Oatley that has done very well in Australia. The successful buyer will get the choice out of the following sires to use: National, Padra, President, Sandown, Jehu, Duty free, Wyoming Wind, Pinay or LAE Troubadour a new bull from Canada. Embryos will be collected once she calves later this year. If sold outside Australia or NZ a quarantine and delivery fee may apply. All associated costs are to be paid by the purchaser. Vendor guarantees a minimum of 4 embryos and a maximum of 6. Vendor offers a 33% pregnancy guarantee if implant is completed by a mutually agreed upon vet.

- TINOR (IMP FRA) FR8504242275
- SILVERSTREAM JENSEN J19 083140019E
- SILVERSTREAM DASHER E193 (ET) 083090193E
- Sire: SILVERSTREAM NATIONAL N40 083170040E*
- SILVERSTREAM BENCHMARK B33 083060033E
- SILVERSTREAM OPIE G8 083110008E
- SILVERSTREAM OPIE C203 083070203E
- SILVERSTREAM BRUMBY B89 083060089E
- SILVERSTREAM EVOLUTION E168 083090168E
- SILVERSTREAM GLOSSY S120 083010120G
- Dam: SILVERSTREAM OCELOT I100 083130100E*
- THE GLEN LEGEND L20 615950020F
- SILVERSTREAM OCELOT V117 083040117G
- SILVERSTREAM P18 083990018G

Buyer: Price:

	CE	CED	GL	BW	200W	400W	600W	MCW	Milk	SC	CW	EMA	Rib	Rump	RBV	IMF	
EBV	-5.3	+1.7	-0.2	+2.5	+16	+31	+44	+51	-2	+0.5	+26	+1.3	-0.7	-1.3	+0.8	-0.1	
Acc	0.54	0.48	0.73	0.78	0.75	0.74	0.73	0.65	0.65	0.69	0.61	0.52	0.61	0.59	0.52	0.51	
Ave	+0.0	+1.3	-2.5	+0.8	+14	+29	+40	+44	+6	+1.3	+24	+1.5	+0.3	+0.2	+0.2	+0.0	

Lot **24** **SILVERSTREAM OCELOT T159**
Myona Charolais & Winkel Park

Reg N°: 083220159D
D.O.B: 18/09/2022
Age: 19 months
HPS: Polled

Charolais
Flush



One word to describe Ocelot is "WOW"! A very deep, thickset broody female in the making. It is not very often you can have a female that is showing the combination of femininity and top like her. Her Sire Rocco is a bull with a big future this is the opportunity to be one of the first in Australia with his progeny. The successful buyer will get the choice out of the following sires to use: National, Padra, President, Sandown, Jehu, Duty Free, Wyoming Wind, Pinay or LAE Troubadour a new bull from Canada. Embryos will be collected once she calves later this year. If sold outside Australia or NZ a quarantine and delivery fee may apply. All associated costs are to be paid by the purchaser. Vendor guarantees a minimum of 4 embryos and a maximum of 6. Vendor offers a 33% pregnancy guarantee if implant is completed by a mutually agreed upon vet. If a youth member is the successful purchaser we will give them a 10% discount.

- SILVERSTREAM GEDDES G102 083110102D
- SILVERSTREAM MANHATTAN M171 083160171D
- SILVERSTREAM WENDY G98 083110098E
- Sire: SILVERSTREAM ROCCO R26 083200026D*
- SILVERSTREAM LOCHIEL L55 083150055F
- SILVERSTREAM CHARLOTTE N52 083170052E
- SILVERSTREAM CHARLOTTE L74 083150074E
- SILVERSTREAM JENSEN J19 083140019E
- SILVERSTREAM NATIONAL N40 083170040E
- SILVERSTREAM OPIE G8 083110008E
- Dam: SILVERSTREAM OCELOT P127 083190127E*
- SILVERSTREAM JEDI J54 083140054E
- SILVERSTREAM OCELOT M40 083160040D
- SILVERSTREAM OCELOT J111 083140111E

Buyer: Price:

	CE	CED	GL	BW	200W	400W	600W	MCW	Milk	SC	CW	EMA	Rib	Rump	RBV	IMF	
EBV	-1.9	+4.4	-0.3	+1.8	+11	+35	+49	+42	+3	+1.6	+29	+1.4	-2.3	-3.1	+1.4	-0.3	
Acc	0.41	0.33	0.59	0.73	0.68	0.68	0.71	0.61	0.49	0.59	0.59	0.46	0.6	0.6	0.54	0.46	
Ave	+0.0	+1.3	-2.5	+0.8	+14	+29	+40	+44	+6	+1.3	+24	+1.5	+0.3	+0.2	+0.2	+0.0	

Lot **25** **SUMMIT GOLD RUSH T29 (PP A AA)**
Summit Livestock

Reg N^o: HLGPT29
D.O.B: 03 May 2022
Age: 24 months

Limousin
Bull

www.summitlivestock.com.au



Beef 2024 is an exceptional event and Gold Rush T29 is an exceptional bull! Power, performance and pedigree, this homo-poled young sire ticks plenty of boxes. Sired by Anchor B Gold Rush who was the CAN\$60,000 top-selling bull for the 2020 North American sale season, T29 displays the exceptional carcass and growth that the Gold Rush progeny are renowned for. The dam side combines some of our strongest cow families in the Summit program including Meadowgrass and Cauliflower. T29 has serious stud sire potential – he will bred progeny with plenty of weight and performance and daughters to build a herd around.

- IVY'S BUBBA WATSON HTZ24B (IMCPK24) (PP A AA)
- B BAR AUSTIN HEALY 4D ET (PEDPUX4D) (P R U)
- B BAR POLLED UNIQUE (PEDPBEAT14U) (P R U)
- Sire: ANCHOR B GOLD RUSH 48G (IMCP3BH48G) (PP R AA)
- ANCHOR B "THE BOSS" (PEDPMBH233V) (P R U)
- ANCHOR B BAILEY 21B (PEDPJBH21B) (P R U)
- ANCHOR B ZAHARA (PEDPJBH5Z) (P R U)
- WULFS ZANE X238Z (IMUPH238) (PP B AA)
- SUMMIT GRAND DESIGN M27 (HLGPM27) (PP B AA)
- SUMMIT MEADOWGRASS 2149 H39 (HLGPH39) (P A AA)
- Dam: SUMMIT CAULIFLOWER P84 (HLGPP84) (PP A U)
- WULFS WALDO T928W (IMUPE55S) (PS R AA)
- SUMMIT CAULIFLOWER H34 (HLGPH34) (P A U)
- PREMIER CAULIFLOWER S3 (PREFS3) (H A U)

Buyer: Price:

	CE	CED	GL	Bwt (kg)	200 (kg)	400 (kg)	600 (kg)	Mwt (kg)	Milk (kg)	SS (cm)	Cwt (kg)	EMA (sq cm)	Rib (mm)	P8 (mm)	RBV (%)	IMF (%)	Doc
EBV	-4.1	--	-1	2.3	31	50	71	67	10	1.3	47	3.4	0.1	0.3	1	0.1	52
Acc	0.29		0.68	0.55	0.55	0.53	0.49	0.35	0.31	0.35	0.38	0.26	0.34	0.33	0.29	0.27	55
Rk	97 %	50 %	85 %	75 %	4 %	8 %	7 %	15 %	20 %	35 %	4 %	8 %	35 %	25 %	30 %	40 %	40 %



Lot **26** **TRURO TROPICAL T046 (P)**
Truro Herefords

Reg N^o: JDHT046
D.O.B: 05/02/2022
Age: 27 months

Hereford
Bull

truroherefords.com



Sired by Yalgoo Peacemaker, makes this calf a half brother to the \$130,000 Brisbane 2023 Interbred Champion Bull Truro Sherlock. An absolute meat machine, with fantastic carcass and do ability. 7in 1, semen tested and vaccinated with 3 germ blood.

- DAYS ROBIN HOOD H38 (AI) (ET) (PP)
- HUNTER LAKES LANCELOT L103 (AI) (ET) (PP)
- HUNTER LAKES FANCY F7 (AI) (P)
- Sire: YALGOO PEACEMAKER P034 (AI) (PP) *
- CHURCHILL STUD 3134A (IMP USA) (PP)
- YALGOO TIGRESS L265 (ET) (P)
- YALGOO TIGRESS Z241 (H#)
- HUNDAY QUIVER (H)
- TRURO GONDOLIER (H)
- TRURO CALAMITY JANE A039 (AI) (H)
- Dam: TRURO ALMOND QUEEN M169 (H#) *
- MERAWAH CADET F31 (P)
- TRURO ALMOND QUEEN J156 (P)
- TRURO ALMOND QUEEN E319 (AI) (P)

Buyer: Price:

	Calving Ease DIR (%)	Calving Ease DTRS (%)	Gestation Length (days)	Birth Wt. (kg)	200 Day Wt (kg)	400 Day Wt (kg)	600 Day Wt (kg)	Mat Cow Wt (kg)	Milk (kg)	Scrotal Size (cm)	Days to Calving (days)	Carcass Wt (kg)	Eye Muscle Area (sq cm)	Rib Fat (mm)	Rump Fat (mm)	Retail Beef Yield (%)	IMF (%)	Docility	NFI-F (kg/day)
EBV	+5.3	+4.7	-3.2	+3.5	+27	+50	+75	+68	+19	+1.8	-2.6	+48	+6.1	+0.3	+0.5	+1.5	+0.9	-	-
Acc	0.38	0.28	0.6	0.72	0.66	0.66	0.66	0.6	0.5	0.76	0.3	0.53	0.47	0.5	0.55	0.48	0.51	-	-
Ave	+2.1	+2.2	-1	+4.5	+36	+59	+83	+71	+17	+2.3	-2.7	+55	+4.5	+0.7	+0.9	+1.0	+0.8	+27	-0.01



Lot **27** **TRURO TEXAS T111 (P)**
Truro Herefords

Reg N^o: JDHT111
D.O.B: 21/03/2022
Age: 25 months

Hereford
Bull

truroherefords.com



Extraordinary muscle and muscle shape, yet retaining exceptional type. Has a double shot of Days Blackberry in the pedigree, making this pedigree a maternal powerhouse. The \$130,000 Interbreed Bull from Ekka 2023, Truro Sherlock, is out of a Days Blackberry female !! 7in 1, semen tested and vaccinated with 3 germ blood.

C ETF WILDCAT 4248 (ET) (P)
CHURCHILL GUNPOWDER 657D (IMP USA) (ET) (PP)
CHURCHILL LADY 002X (P)
Sire: TRURO PISTOL PETE P160 (AI) (ET) (PP) *
DAYS BLACKBERRY G82 (AI) (P)
TRURO CHEERY RIPE K036 (AI) (P)
TRURO CHERRY RIPE G064 (AI) (P)
REMITALL EMBRACER 8E (IMP CAN) (P)
DAYS BLACKBERRY G82 (AI) (P)
ALLENDALE FANCY B94 (AI) (P)
Dam: TRURO UNITY M108 (AI) (P) *
MERAWAH CADET F31 (P)
TRURO UNITY J171 (P)
RAYLEIGH M UNITY G68 (P)

Buyer: Price:

	Calving Ease DIR (%)	Calving Ease DTRS (%)	Gestation Length (days)	Birth Wt. (kg)	200 Day Wt (kg)	400 Day Wt (kg)	600 Day Wt (kg)	Mat Cow Wt (kg)	Milk (kg)	Scrotal Size (cm)	Days to Calving (days)	Carcass Wt (kg)	Eye Muscle Area (sq cm)	Rib Fat (mm)	Rump Fat (mm)	Retail Beef Yield (%)	IMF (%)	Docility	NFI-F (kg/day)
EBV	-2	-4.7	-0.8	+5.4	+38	+67	+93	+81	+16	+3.7	-1.7	+58	+4.5	-1	-2.1	+1.5	+0.9	-	-
Acc	0.37	0.28	0.62	0.72	0.66	0.66	0.66	0.6	0.53	0.77	0.3	0.53	0.48	0.51	0.55	0.48	0.5	-	-
Ave	+2.1	+2.2	-1	+4.5	+36	+59	+83	+71	+17	+2.3	-2.7	+55	+4.5	+0.7	+0.9	+1.0	+0.8	+27	-0.01



Lot **28** **TRURO TOMCAT T121 (H)**
Truro Herefords

Reg N^o: JDHT121
D.O.B: 12/04/2022
Age: 25 months

Hereford
Bull

truroherefords.com



His sire, Hylands Fortunate, is a powerhouse of a bull in the horn breed for calving ease and IMF. Tom Cat is structurally very correct, with calving ease data almost 3 times breed average, and IMF over twice breed average. If you want an MSA sire to increase your bottom line, this is your bull. 7in 1, semen tested and vaccinated with 3 germ blood.

CHURCHILL A1 ET (IMP USA) (H)
AVIGNON FORTUNE (IMP USA) L907 (AI) (ET) (H)
CHURCHILL ILR LADY 1230Y ET (IMP USA) (H)
Sire: HYLANDS FORTUNATE Q265 (H) *
IRONBARK B582 KURRAJONG J587 (H)
HYLANDS CORISANDE M728 (H)
HYLANDS CORISANDE J150 (TW) (H)
YARRAM UNIQUE F181 (H)
TRURO JONTE J033 (AI) (H)
TRURO PRUDENCE C106 (H)
Dam: TRURO DAFFODIL P021 (H) *
TONDARA 29R RAMBO F152 (AI) (H)
TRURO DAFFODIL J132 (H)
TRURO DAFFODIL E075 (AI) (ET) (H)

Buyer: Price:

	Calving Ease DIR (%)	Calving Ease DTRS (%)	Gestation Length (days)	Birth Wt. (kg)	200 Day Wt (kg)	400 Day Wt (kg)	600 Day Wt (kg)	Mat Cow Wt (kg)	Milk (kg)	Scrotal Size (cm)	Days to Calving (days)	Carcass Wt (kg)	Eye Muscle Area (sq cm)	Rib Fat (mm)	Rump Fat (mm)	Retail Beef Yield (%)	IMF (%)	Docility	NFI-F (kg/day)
EBV	+5.8	-	+0.9	+3.3	+32	+51	+74	+53	+22	+2.1	-4.3	+48	+3.7	+1.7	+2.9	-0.5	+1.7	-	-
Acc	0.35	-	0.53	0.71	0.65	0.64	0.65	0.58	0.48	0.75	0.27	0.52	0.46	0.49	0.53	0.46	0.49	-	-
Ave	+2.1	+2.2	-1	+4.5	+36	+59	+83	+71	+17	+2.3	-2.7	+55	+4.5	+0.7	+0.9	+1.0	+0.8	+27	-0.01



Lot **29** **TRURO DAFFODIL M066 (AI) (P)**
Truro Herefords

Reg N^o: JDHM066
D.O.B: 02/08/2016

Hereford
Flush
truroherefords.com



This is the number one breeding female in our herd - she is open to flush to the bull of your choice. M066 is the Dam of the 2023 Brisbane Interbreed Champion Bull, the \$130,000 Truro Sherlock S188. M066 never misses, and a full brother to Sherlock, Truro Tyrone, has been retained for stud duties at Truro. An exceptional cow both in phenotype and breeding ability. We are offering the opportunity to flush this cow to the bull of your choice. She will be flushed by Goldstar Genetics with a minimum of 6 embryos.

- REMITALLACME 10A (P)
- REMITALL EMBRACER 8E (IMP CAN) (P)
- PLAIN LAKE BELLE 20X 117P 5B (P)
- Sire: DAYS BLACKBERRY G82 (AI) (P) *
- ALLENDALE NATIONAL W168 (PP)
- ALLENDALE FANCY B94 (AI) (P)
- ALLENDALE FANCY V46 (P)
- TENARU CADET C2 (AI) (P)
- MERAWAH CADET F31 (P)
- MERAWAH IRISH ROSE C34 (P)
- Dam: TRURO DAFFODIL J180 (P) *
- TALBALBA VAMPIRE (H)
- TRURO DAFFODIL F035 (H)
- TRURO DAFFODIL B073 (H)

Buyer: Price:

	Calving Ease DIR (%)	Calving Ease DTRS (%)	Gestation Length (days)	Birth Wt. (kg)	200 Day Wt (kg)	400 Day Wt (kg)	600 Day Wt (kg)	Mat Cow Wt (kg)	Milk (kg)	Scrotal Size (cm)	Days to Calving (days)	Carcass Wt (kg)	Eye Muscle Area (sq cm)	Rib Fat (mm)	Rump Fat (mm)	Retail Beef Yield (%)	IMF (%)	Docility	NFLF (kg/day)
EBV	-3.6	-9.3	-2.3	+3.4	+32	+52	+69	+52	+15	+2.9	-1.8	+45	+4.4	-0.6	-1.1	+1.6	+0.4	-	-
Acc	0.51	0.41	0.72	0.77	0.71	0.71	0.71	0.71	0.65	0.63	0.33	0.59	0.49	0.54	0.57	0.5	0.53	-	-
Ave	+2.1	+2.2	-1	+4.5	+36	+59	+83	+71	+17	+2.3	-2.7	+55	+4.5	+0.7	+0.9	+1.0	+0.8	+27	-0.01



Lot **30** **SIX STAR SOUTHERN AURORA 'PREMIUM'**
RcF (ED/EO), NT821F, Leptin T/T, (PcPc)
Six Star Speckle Park

Reg N^o: SPC T61
D.O.B: 23/06/2022
Age: 22 months

Speckle Park
Bull
specklepark.com.au



Six Star Premium T61 presents to commercial or stud breeders the opportunity to secure a truly high performance Speckle Park bull with EXTRA grunt and leg to him. He has excellent growth with easy doing ability built in, having impressive large EMA (120sq/cm @ 20mths) and the all important ability to have an EVEN quality fat cover (20mm & 16mm) which by any measure TOP SHELF carcass data! He is a own son of the world renowned Speckle Park Sire, Six Star Premier L14 and out of a Six Star matron in Six Star Unique J23, who has bred many superior individuals and another carcass oriented individual in her own make up. You have the chance here to avail yourself of an extraordinarily good, sound structured Speckle Park bull to breed great F1 or purebred TOP END steers or bulls that will have brilliant CARCASSES & females who will have extra grunt and leg to them with beautiful udders. A quality "modern" free moving Speckle Park bull that's hard to find.

- A & W 15R (P) (LEOPARD)
- SIX STAR RARE COMMODITY (AI) (ET) (SPECKLED)
- PRAIRIE HILL REBA 154F (SPECKLED)
- Sire: SIX STAR PREMIER (P) (SPECKLED)*
- RIVER HILL 26T WALKER 60W (P) (SPECKLED)
- SIX STAR PHO-FINISH G250 (AI) (ET) (P) (Black)
- NOTTA PHO-FINISH 54P (SPECKLED)
- BELMORAL'S SPECIAL 99H (SPECKLED)
- A & W 15R (P) (LEOPARD)
- TRIPLE A GEM 15G (SPECKLED)
- Dam: SIX STAR UNIQUE J23 (AI) (ET) (P) (SPECKLED)*
- CODIAK MR. BLACK RKW 13M (BLACK)
- CODIAK TERESSA GNK 12T (P) (SPECKLED)
- CODIAK RKW 07J (SPECKLED)

Buyer: Price:

	Gestation Length (days)	Birth Wt (kg)	200 Day Wt (kg)	400 Day Wt (kg)	600 Day Wt (kg)	Mat Cow Wt (kg)	Milk (kg)	Scrotal Size (cm)	Carcass Wt (kg)	Eye Muscle Area (sq cm)	Rib Fat (mm)	Rump Fat (mm)	Retail Beef Yield (%)	IMF (%)
EBV	+1.5	+3.5	+18	+34	+51	+58	+5	+1.1	+28	+1.4	+0.2	+0.1	0	+0.7
Acc	0.48	0.65	0.62	0.58	0.59	0.49	0.44	0.53	0.49	0.41	0.51	0.5	0.47	0.46
Ave	+0.0	+1.7	+16	+24	+32	+33	+5	+0.3	+19	+0.6	+0.2	+0.2	-0.1	+0.1



Lot **GK URBAN LEGEND**
31
 GK Livestock

Reg N°: GKIU001
 D.O.B: 02/01/2023
 Age: 18 months
 HPS: Polled

Simmental
Bull
 gklivestock.com



Urban Legend U001 is a Polled, Hetero Black, 15 month old Simmental bull that has performance figures in the top 10% of the breed for weaning weight and yearling weight and the top 15% for carcass weight on IGS. U1 is a young Queensland bred bull displaying plenty of growth for age and muscle mass, combined with a soft, slick skin, an excellent set of feet and a very good temperament. Vaccinated with 7 in 1, Pestiguard, 3 day vac, Vibriovacc and blooded for Tick fever. BBSE crush side semen by Dalby & District Vet Services. J-Bas 7 herd

PEDPX1153 LFE THE DARK NIGHT 350U
 PEDPX1154 LFE GOTHAM 819Y
 PEDPX1152 LFE BEST LADY 47W
 Sire: IMCPK323 LFE THE RIDDLER 323B (P)(B)
 IMUPD263 TNT TANKER U263 (P)(B)
 PEDPX1155 LFE BS CHARO 23Y
 PEDBX707+03 LFE CHARO 3N (P)
 IMUPZ737 REMINGTON RED LABEL HR (P)(ET)
 GKIPM002 GK MERCURY RISING M2 (P)(ET)(AI)
 PED3X482+97 BAR 15 MISS KNIGHT78E-SIG (P)
 Dam: GKIPPO05 GK PRECIOUS MASTERPIECE (P)
 IMUPG052 SPRINGCREEK LOTTO 52Y (P)(B)
 GBAPJ002 ALLIANCE MASTERPIECE J2 (P)(ET)(AI)
 PED3X981 ASR LITTLE MOLLY P441 (P)

Buyer: Price:

	CE	BW	WW	YW	Milk	MCE	MWWT	STAY	DOC		CW	REA	FAT	MARB	YG	AAPI	ATI	API	TI
EPD	10.1	3.7	91.8	142	21.9	7.8	67.8	16.7	10.8		39.9	0.88	-0.076	-0.08	-0.35	62.14	75.74	121.93	79.28
Acc	0.42	0.45	0.42	0.42	0.18	0.26	0.26	0.36	0.4		0.39	0.37	0.34	0.36	0.32				
Rk	0.55	0.75	0.1	0.1	0.45	0.2	0.15	0.4	0.75		0.15	0.4	0.4	0.85	0.7	0.55	0.2	0.6	0.35



Lot **BRENAIR PARK TULLOCH T 091**
32
 Brenair Park Fleckvieh Simmentals

Reg N°: AUS407
 D.O.B: 12/04/2022
 Age: 25 months
 HPS: DH

Fleckvieh
Bull



Very thick deep bodied heavily muscled but very soft bull with great temperament. Acclimatized in Queensland since weaning in ticky country. Have been 3 germ blooded. Outcross bloodlines.

BRENAIR PARK SAMBACH
 BRENAIR PARK SUMO
 BRENAIR PARK SYBIL F084
 Sire: BRENAIR PARK QUEST Q 104
 GELORA PARK TAURUS
 BRENAIR PARK WALLFLOWER K044
 BRENAIR PARK WALLFLOWER D97
 SIEGFRIED 146340
 BRENAIR PARK MOSES M120
 COONAWARRA J008
 Dam: BRENAIR PARK VASTI Q 049
 BRENAIR PARK DYNAMIC
 BRENAIR PARK VASTI H074
 BRENAIR PARK VASTI C55

Buyer: Price:



Lot **33** **BRENAIR PARK TARWIN T 053**
Brenair Park Fleckvieh Simmentals

Reg N^o: AU5380
D.O.B: 22/03/2022
Age: 25 months
HPS: DH

Fleckvieh
Bull



An extremely long smooth bull. He is very soft good with a great temperament. Acclimatized in Queensland since weaning in ticky country. Have been 3 germ blooded. Outcross bloodlines.

BRENAIR PARK HAFKE
BRENAIR PARK HUSTLER
BRENAIR PARK GUSTI A027
Sire: BRENAIR PARK NOBLE N088
BRENAIR PARK SAMBACH
BRENAIR PARK CHRISTA J084
BRENAIR PARK CHRISTA F049
KYKSO KAINO
BRENAIR PARK HANS
RU-DEV CASSY
Dam: BRENAIR PARK PATRICA N075
KYKSO HAPED
BRENAIR PARK PATRICA D031
GUNZEL PATRICA

Buyer: Price:



Lot **34** **SUMMIT CHARISMA U76**
Summit Livestock

Reg N^o: GWAU076
D.O.B: 07/05/2023
Age: 12 months
HPS: Polled

Simmental
Heifer



Elevation, extension and elegance, this young heifer is a real show stopper. Deep-sided, long-bodied and smooth-made, Charisma U76 is something unique. Add to her superb phenotype a super predictable pedigree, this homozygous-black, polled heifer offers an exciting opportunity to be the foundation of an incredible cow family in her new herd. Her dam Charisma Q1 is one of our favourite Simmental females and the Charisma cow family always breeds so consistently. Don't miss this opportunity to secure this treasure.

IMUP5151*97 NICHOLS LEGACY G151 (P)(B)
IMUPW186*01 CNS DREAM ON L186 (P)(ET)(B)
PEDBX1948 CNS SHEEZA DREAM K107W
Sire: IMUPA094 HTP SVF IN DEW TIME (P)(B)
IMUPT187*98 GW LUCKY DICE 187H (P)(B)
PEDBX3335 HTP SVF HONEYDEW
PEDBX3334 HC HONEYSUCKLE ROSE
PEDBX3851*02 ELLINGSON LEGACY M229 (P)
IMUPG111 MR ISHEE CATALYST (P)(B)
PEDBX686 ISHEE MS BLK SAPPHIRE
Dam: GWAPO001 SUMMIT CHARISMA Q1 (P)(ET)(AI)(B)
IMCPH021 ERIXON PIT BOSS 21Z (P)(B)
GBAPL001 ALLIANCE CHARISMA L1 (P)(ET)(AI)(B)
GBAPJ003 ALLIANCE CHARISMA J3 (P)(ET)(AI)(B)

Buyer: Price:

	CE	BW	WW	YW	Milk	MCE	MWWT	STAY	DOC	CW	REA	FAT	MARB	YG	AAPI	ATI	API	TI
EPD	12.4	2.4	78	108.1	19.5	5.3	58.5	14.6	11.6	20.2	0.77	-0.079	0.16	-0.4	57.33	39.1	128.43	77.94
Acc	0.23	0.24	0.25	0.24	0.2	0.2	0.22	0.22	0.28	0.28	0.27	0.22	0.22	0.22				
Rk	0.3	0.55	0.45	0.7	0.65	0.6	0.6	0.65	0.65	0.8	0.6	0.45	0.35	0.5	0.65	0.75	0.45	0.4



Lot **GOLDSTAR URALLA U001**
35
 Goldstar Genetics

Reg N°: GOLU001
 D.O.B: 23/02/2023
 Age: 14 months
 HPS: Polled

Simmental
Heifer
 goldstargenetics.com.au



100/100 eye pigment and Polled. A sweet stylish heifer with plenty of thickness and softness. Moderate framed with an impeccable temperament. Top 5% for calving ease and positive weight traits. Uralla has all the ingredients to makelowbirthweight, early maturing bulls with extra punch.Offered unjoined

IPLPN027*93 GLEN ANTHONY SGT. PEPPER AC27 (AI)
 PEDPX1170 WAI-ITI HIGH RISER
 PEDPX1169 WAI-ITI PAULA 5
 Sire: IPLPF299 GLEN ANTHONY Y-ARTA AY02 (P)(ET)
 PEDPX1166 TOKAWEKA HANDSOME AH801
 PEDPX1167 WILLOWBROOK URSULINA AU18
 PEDPX1164 WILLOWBROOK FERGIE
 PEDPX1368 FGAF SELDOM 835L
 IMCPG810 FGAF GUERRERO 810Y (P)
 PEDPX1931 NOSSATERRA REAL WISH 69U
 Dam: DBHPR034 DARAABAH RARLA R034 (P)(AI)
 DBH3K469 DARAABAH KIKSUM K469 (H)
 DBHPN717 DARAABAH NARLA N717 (P)
 DBH2G622 DARAABAH WONDENIA GOSSIMA G622 (H)

Buyer: Price:

	CE	BW	WW	YW	Milk	MCE	MWWT	STAY	DOC		CW	REA	FAT	MARB	YG	AAPI	ATI	API	TI
EPD	10.8	3.2	75.1	106	31.2	6.7	68.8	14	16.3		14.7	0.55	-0.123	-0.08	-0.46	63.55	28.21	110.28	70.71
Acc	0.17	0.19	0.18	0.18	0.14	0.14	0.15	0.13	0.17		0.15	0.15	0.12	0.15	0.12				
Rk	0.05	0.1	0.35	0.35	0.2	0.1	0.2	0.5	0.02		0.75	0.95	0.8	0.45	0.7	0.15	0.7	0.15	0.15



Lot **GOLDSTAR ULANNI U007**
36
 Goldstar Genetics

Reg N°: GOLPU007
 D.O.B: 17/03/2023
 Age: 13 months
 HPS: Polled

Simmental
Heifer
 goldstargenetics.com.au



100/100 eye pigment and Polled. Another moderately framed, early maturing heifer with plenty of thickness and width where it counts. Very strong maternal pedigree combining the best from Germany, Canada, South Africa and Australia. Longevity built in. Impeccable temperament Offered unjoined.

IMGZ084 STEINADLER PP (P)
 IMGPD103 STEINMARDER PP (P)
 PEDBX388 FLAVIA
 Sire: DBHPJ351 DARAABAH JUMPING JACK FLASH J3 (P)(AI)
 BXNPW026*01 TENNYSONVALE MR WALLACE (P)
 BXNPF033 TENNYSONVALE FIFI F033 (P)
 BXN2Y018*03 TENNYSONVALE YIPPEE Y018 (H)
 PEDBX364 CHAMPS ROMANO
 IMCPD060 CHAMPS BRAVO (P)
 PEDBX369 VIRGINIA POLL BARBI SUE
 Dam: LVSPPO11 LIZZY VALLEY SELENA P011 (H)(ET)(AI)
 IMCPX826*02 BAR 5 P SA EXPERT 826M (P)
 PEDBX183 BAR 5 SA SELENA 807R (P)
 PEDBX182 BAR 5 SA LADY SISKA 804L

Buyer: Price:

	CE	BW	WW	YW	Milk	MCE	MWWT	STAY	DOC		CW	REA	FAT	MARB	YG	AAPI	ATI	API	TI
EPD	5.4	5.9	72.3	97.7	29.5	1.2	65.7	9.6	6		12.4	0.8	-0.118	-0.11	-0.54	22.65	15.81	86.65	64.05
Acc	0.13	0.14	0.13	0.13	0.07	0.07	0.09	0.09	0.11		0.12	0.11	0.09	0.11	0.09				
Rk	0.45	0.55	0.5	0.6	0.3	0.9	0.35	0.95	0.9		0.85	0.45	0.65	0.6	0.2	1	0.9	0.8	0.5



Lot **37** **Pick of the 2023 spring heifer calf drop**
Daraabah Simmental

Simmental
Heifers

daraabah.com.au



We have been working hard on improving the 'efficiency' of our cow herd. For us, phenotype comes first, with all our females undergoing linear classification. Pedigree and figures will follow. With the improvements we believe we have made we have decided to offer a pick of the heifer of your choice from our Spring 2023 calf drop. It was a real bull calving with only 25% heifers so the quantity is down but the quality is there to see. We have 10 heifers to choose from. 6 are sired by Jarravale Pharaoh (PP) who has proven to be a real cow maker for us producing females with a phenotype built for longevity, great temperament and positive traits for calving, weights and carcass. 3 are sired by Loadery Murphy. They are early maturing types with extra omph and class. We also have the first Glenanna Superstar heifer to be offered for sale. Use the QR code to get all the info on each heifer in the pick.



Buyer: Price:

Lot **38** **MADER NIGHT SHIFT 63K**
Goldstar Genetics

Reg N°: 1398065
D.O.B: 12/01/2022
HPS: Polled

Simmental
10 semen straws

goldstargenetics.com.au



Nightshift is bull that demands respect! A homo black sire we secured the Australia Rights to when he made \$100,000. A true sire that is backed by unreal pedigree and if that is not enough he was crowned the Legends of the Fall All Breeds Champion at Farmfair, Champion Simmental and Reserve Champion All Breeds Presidents Choice at Agribition. We at Goldstar selected Nightshift for his overall thickness and length of body that has a real sire outlook. Ryley Mader has said the Nightshift calves are standouts in his herd with a average birthweight of 36Kg. If you need more convincing to buy his semen then look at his figures, you don't see a trait leader like this guy every day. Be the first to buy his semen in Australia.

- CA-BPG755730 NCB COBRA 47Y
- CA-BPG1185876 NGDB STRUCTURE 34D
- CA-BPG1131005 NGDB LOUISE 411 B
- Sire: CA-BPTG1316267 RF SHAKEDOWN 074H
- CA-BPTG790139 CCR COWBOY CUT 5048Z
- CA-BPG1190478 IPU MS. COWBOY CUT 135D
- CA-BPG1128417 IPU MS. TULA 19B
- CA-BPG714342 WHEATLAND PREDATOR 922W
- CA-BPTG758639 WHEATLAND HIGH OCTANE169Y
- CA-BPRS605162 WHEATLAND LADY 351N
- Dam: CA-BPTG1148313 MADER SUGAR CANE 48C
- CA-BPTG693586 MADER P BLACK IRONMAN 22U
- CA-BPTG731065 MADER P IRON SUGAR 7X
- CA-BPG694203 LFE FAMOUS 632T

Buyer: Price:

	CE	BW	WW	YW	Milk	MCE	MWWT	STAY	DOC		CW	REA	FAT	MARB	YG	AAPI	ATI	API	TI
EPD	5.2	4.6	101.4	136.7	22.9	3.1	73.6	13.2	15.6		25.8	0.87	-0.06	0.28		126.64	90.66	126.64	90.66
Acc	0.45	0.54	0.48	0.49	0.18	0.23	0.28	0.31	0.37		0.39	0.36	0.3	0.34					
Rk	80%	70%	2%	10%	65%	70%	15%	80%	4%		50%	50%	100%	2%				15%	1%



Lot **39** **MADER NIGHT SHIFT 63K**
Goldstar Genetics

Reg N°: 1398065
D.O.B: 12/01/2022
HPS: Polled

Simmental
10 semen straws
goldstargenetics.com.au



Nightshift is bull that demands respect! A homo black sire we secured the Australia Rights to when he made \$100,000. A true sire that is backed by unreal pedigree and if that is not enough he was crowned the Legends of the Fall All Breeds Champion at Farmfair, Champion Simmental and Reserve Champion All Breeds Presidents Choice at Agribition. We at Goldstar selected Nightshift for his overall thickness and length of body that has a real sire outlook. Ryley Mader has said the Nightshift calves are standouts in his herd with an average birthweight of 36Kg. If you need more convincing to buy his semen then look at his figures, you don't see a trait leader like this guy every day. Be the first to buy his semen in Australia.

- CA-BPG755730 NCB COBRA 47Y
- CA-BPG1185876 NGDB STRUCTURE 34D
- CA-BPG1131005 NGDB LOUISE 411 B
- Sire: CA-BPTG1316267 RF SHAKEDOWN 074H
- CA-BPTG790139 CCR COWBOY CUT 5048Z
- CA-BPG1190478 IPU MS. COWBOY CUT 135D
- CA-BPG1128417 IPU MS. TULA 19B
- CA-BPG714342 WHEATLAND PREDATOR 922W
- CA-BPTG758639 WHEATLAND HIGH OCTANE169Y
- CA-BPRS605162 WHEATLAND LADY 351N
- Dam: CA-BPTG1148313 MADER SUGAR CANE 48C
- CA-BPTG693586 MADER P BLACK IRONMAN 22U
- CA-BPTG731065 MADER P IRON SUGAR 7X
- CA-BPG694203 LFE FAMOUS 632T

Buyer: Price:

	CE	BW	WW	YW	Milk	MCE	MWWT	STAY	DOC		CW	REA	FAT	MARB	YG	AAPI	ATI	API	TI
EPD	5.2	4.6	101.4	136.7	22.9	3.1	73.6	13.2	15.6		25.8	0.87	-0.06	0.28		126.64	90.66	126.64	90.66
Acc	0.45	0.54	0.48	0.49	0.18	0.23	0.28	0.31	0.37		0.39	0.36	0.3	0.34					
Rk	80%	70%	2%	10%	65%	70%	15%	80%	4%		50%	50%	100%	2%				15%	1%



Lot **40** **MADER NIGHT SHIFT 63K**
Goldstar Genetics

Reg N°: 1398065
D.O.B: 12/01/2022
HPS: Polled

Simmental
10 semen straws
goldstargenetics.com.au



Nightshift is bull that demands respect! A homo black sire we secured the Australia Rights to when he made \$100,000. A true sire that is backed by unreal pedigree and if that is not enough he was crowned the Legends of the Fall All Breeds Champion at Farmfair, Champion Simmental and Reserve Champion All Breeds Presidents Choice at Agribition. We at Goldstar selected Nightshift for his overall thickness and length of body that has a real sire outlook. Ryley Mader has said the Nightshift calves are standouts in his herd with an average birthweight of 36Kg. If you need more convincing to buy his semen then look at his figures, you don't see a trait leader like this guy every day. Be the first to buy his semen in Australia.

- CA-BPG755730 NCB COBRA 47Y
- CA-BPG1185876 NGDB STRUCTURE 34D
- CA-BPG1131005 NGDB LOUISE 411 B
- Sire: CA-BPTG1316267 RF SHAKEDOWN 074H
- CA-BPTG790139 CCR COWBOY CUT 5048Z
- CA-BPG1190478 IPU MS. COWBOY CUT 135D
- CA-BPG1128417 IPU MS. TULA 19B
- CA-BPG714342 WHEATLAND PREDATOR 922W
- CA-BPTG758639 WHEATLAND HIGH OCTANE169Y
- CA-BPRS605162 WHEATLAND LADY 351N
- Dam: CA-BPTG1148313 MADER SUGAR CANE 48C
- CA-BPTG693586 MADER P BLACK IRONMAN 22U
- CA-BPTG731065 MADER P IRON SUGAR 7X
- CA-BPG694203 LFE FAMOUS 632T

Buyer: Price:

	CE	BW	WW	YW	Milk	MCE	MWWT	STAY	DOC		CW	REA	FAT	MARB	YG	AAPI	ATI	API	TI
EPD	5.2	4.6	101.4	136.7	22.9	3.1	73.6	13.2	15.6		25.8	0.87	-0.06	0.28		126.64	90.66	126.64	90.66
Acc	0.45	0.54	0.48	0.49	0.18	0.23	0.28	0.31	0.37		0.39	0.36	0.3	0.34					
Rk	80%	70%	2%	10%	65%	70%	15%	80%	4%		50%	50%	100%	2%				15%	1%



Lot **41** **MADER NIGHT SHIFT 63K**
Goldstar Genetics

Reg N^o: 1398065
D.O.B: 12/01/2022
HPS: Polled

Simmental
10 semen straws
goldstargenetics.com.au



Nightshift is bull that demands respect! A homo black sire we secured the Australia Rights to when he made \$100,000. A true sire that is backed by unreal pedigree and if that is not enough he was crowned the Legends of the Fall All Breeds Champion at Farmfair, Champion Simmental and Reserve Champion All Breeds Presidents Choice at Agribition. We at Goldstar selected Nightshift for his overall thickness and length of body that has a real sire outlook. Ryley Mader has said the Nightshift calves are standouts in his herd with an average birthweight of 36Kg. If you need more convincing to buy his semen then look at his figures, you don't see a trait leader like this guy every day. Be the first to buy his semen in Australia.

- CA-BPG755730 NCB COBRA 47Y
- CA-BPG1185876 NGDB STRUCTURE 34D
- CA-BPG1131005 NGDB LOUISE 411 B
- Sire: CA-BPTG1316267 RF SHAKEDOWN 074H
- CA-BPTG790139 CCR COWBOY CUT 5048Z
- CA-BPG1190478 IPU MS. COWBOY CUT 135D
- CA-BPG1128417 IPU MS. TULA 19B
- CA-BPG714342 WHEATLAND PREDATOR 922W
- CA-BPTG758639 WHEATLAND HIGH OCTANE169Y
- CA-BPRS605162 WHEATLAND LADY 351N
- Dam: CA-BPTG1148313 MADER SUGAR CANE 48C
- CA-BPTG693586 MADER P BLACK IRONMAN 22U
- CA-BPTG731065 MADER P IRON SUGAR 7X
- CA-BPG694203 LFE FAMOUS 632T

Buyer: Price:

	CE	BW	WW	YW	Milk	MCE	MWWT	STAY	DOC		CW	REA	FAT	MARB	YG	AAPI	ATI	API	TI
EPD	5.2	4.6	101.4	136.7	22.9	3.1	73.6	13.2	15.6		25.8	0.87	-0.06	0.28		126.64	90.66	126.64	90.66
Acc	0.45	0.54	0.48	0.49	0.18	0.23	0.28	0.31	0.37		0.39	0.36	0.3	0.34					
Rk	80%	70%	2%	10%	65%	70%	15%	80%	4%		50%	50%	100%	2%				15%	1%



Lot **42** **MADER NIGHT SHIFT 63K**
Goldstar Genetics

Reg N^o: 1398065
D.O.B: 12/01/2022
HPS: Polled

Simmental
10 semen straws
goldstargenetics.com.au



Nightshift is bull that demands respect! A homo black sire we secured the Australia Rights to when he made \$100,000. A true sire that is backed by unreal pedigree and if that is not enough he was crowned the Legends of the Fall All Breeds Champion at Farmfair, Champion Simmental and Reserve Champion All Breeds Presidents Choice at Agribition. We at Goldstar selected Nightshift for his overall thickness and length of body that has a real sire outlook. Ryley Mader has said the Nightshift calves are standouts in his herd with an average birthweight of 36Kg. If you need more convincing to buy his semen then look at his figures, you don't see a trait leader like this guy every day. Be the first to buy his semen in Australia.

- CA-BPG755730 NCB COBRA 47Y
- CA-BPG1185876 NGDB STRUCTURE 34D
- CA-BPG1131005 NGDB LOUISE 411 B
- Sire: CA-BPTG1316267 RF SHAKEDOWN 074H
- CA-BPTG790139 CCR COWBOY CUT 5048Z
- CA-BPG1190478 IPU MS. COWBOY CUT 135D
- CA-BPG1128417 IPU MS. TULA 19B
- CA-BPG714342 WHEATLAND PREDATOR 922W
- CA-BPTG758639 WHEATLAND HIGH OCTANE169Y
- CA-BPRS605162 WHEATLAND LADY 351N
- Dam: CA-BPTG1148313 MADER SUGAR CANE 48C
- CA-BPTG693586 MADER P BLACK IRONMAN 22U
- CA-BPTG731065 MADER P IRON SUGAR 7X
- CA-BPG694203 LFE FAMOUS 632T

Buyer: Price:

	CE	BW	WW	YW	Milk	MCE	MWWT	STAY	DOC		CW	REA	FAT	MARB	YG	AAPI	ATI	API	TI
EPD	5.2	4.6	101.4	136.7	22.9	3.1	73.6	13.2	15.6		25.8	0.87	-0.06	0.28		126.64	90.66	126.64	90.66
Acc	0.45	0.54	0.48	0.49	0.18	0.23	0.28	0.31	0.37		0.39	0.36	0.3	0.34					
Rk	80%	70%	2%	10%	65%	70%	15%	80%	4%		50%	50%	100%	2%				15%	1%



Lot **43** **BRENAIR PARK MANTA**
Brenair Park Fleckvieh Simmentals

Reg N°: SPBPM09
D.O.B: 05/05/2016
HPS: Polled

Simmental
10 semen straws



Homo Polled, 100/100 eye pigment. Manta was a free moving, high capacity, easy doing bull with a great temperament. He took the eye of many judges, finishing in the top 5 in the interbreed at Beef 2018 and grand champion Fleckvieh bull at ekka of the same year. Renowned pedigree. He sired the top priced bull at the 2023 Lucrana Simmentals sale. Sold to Scott and Claire York, Casa Toro Stud for \$24,000

PEDBX1790 HAFKE 5777207 PEDBX1790
 SPBPB028 BRENAIR PARK HAFKE (H)(ET)(AI)
 PEDBX2618*99 KYKSO DIDAKA PEDBX2618
 Sire: SPBPH068 BRENAIR PARK HUSTLER
 IMGPS956*97 ZIMBO (P)
 SPBPA027 BRENAIR PARK GUSTI A027 (P)(ET)(AI)
 PEDBX2116*96 GUSTI
 IMDPL031*91 GORM
 PEDBX3732 GIGANT
 PEDBX3731 HANKA
 Dam: SPBPE086 BRENAIR PARK KALBIN E86 (H)(ET)(AI)
 PEDBX3788 HIPPODROM
 PEDBX3789 KALBIN
 PEDBX3787 GISELA 09/18036904

Buyer: Price:

	CE	BW	WW	YW	Milk	MCE	MWWT	STAY	DOC		CW	REA	FAT	MARB	YG	AAPI	ATI	API	TI
EPD	3.5	9	85.5	124.8	25	-0.3	67.8	7.3	9.9		17.6	0.9	-0.131	0.17	-0.58	19.1	21.47	96.27	74.89
Acc	0.33	0.41	0.45	0.44	0.13	0.11	0.24	0.24	0.28		0.28	0.27	0.24	0.27	0.23				
Rk	75%	100%	10%	10%	65%	100%	25%	100%	35%		65%	20%	95%	3%	5%	100%	80%	50%	10%



Lot **44** **BRENAIR PARK MANTA**
Brenair Park Fleckvieh Simmentals

Reg N°: SPBPM09
D.O.B: 05/05/2016
HPS: Polled

Simmental
10 semen straws



Homo Polled, 100/100 eye pigment. Manta was a free moving, high capacity, easy doing bull with a great temperament. He took the eye of many judges, finishing in the top 5 in the interbreed at Beef 2018 and grand champion Fleckvieh bull at ekka of the same year. Renowned pedigree. He sired the top priced bull at the 2023 Lucrana Simmentals sale. Sold to Scott and Claire York, Casa Toro Stud for \$24,000

PEDBX1790 HAFKE 5777207 PEDBX1790
 SPBPB028 BRENAIR PARK HAFKE (H)(ET)(AI)
 PEDBX2618*99 KYKSO DIDAKA PEDBX2618
 Sire: SPBPH068 BRENAIR PARK HUSTLER
 IMGPS956*97 ZIMBO (P)
 SPBPA027 BRENAIR PARK GUSTI A027 (P)(ET)(AI)
 PEDBX2116*96 GUSTI
 IMDPL031*91 GORM
 PEDBX3732 GIGANT
 PEDBX3731 HANKA
 Dam: SPBPE086 BRENAIR PARK KALBIN E86 (H)(ET)(AI)
 PEDBX3788 HIPPODROM
 PEDBX3789 KALBIN
 PEDBX3787 GISELA 09/18036904

Buyer: Price:

	CE	BW	WW	YW	Milk	MCE	MWWT	STAY	DOC		CW	REA	FAT	MARB	YG	AAPI	ATI	API	TI
EPD	3.5	9	85.5	124.8	25	-0.3	67.8	7.3	9.9		17.6	0.9	-0.131	0.17	-0.58	19.1	21.47	96.27	74.89
Acc	0.33	0.41	0.45	0.44	0.13	0.11	0.24	0.24	0.28		0.28	0.27	0.24	0.27	0.23				
Rk	75%	100%	10%	10%	65%	100%	25%	100%	35%		65%	20%	95%	3%	5%	100%	80%	50%	10%



Lot **45** x **MRL BLACK COUNTESS 5408C**
WS PROCLAMATION E202
 Goldstar Genetics

Simmental
 3 embryos
 goldstargenetics.com.au



Embryos Sire: WS PROCLAMATION E202 1248522



Donor: MRL BLACK COUNTESS 5408C 1139297

A front paddock combination of proven genetics. Black Countess 5408C is a matron combining calving ease and high weight traits with a perfect udder structure. Proclamation E202 is known for good disposition, calving ease, extra body mass, super sound structure, great feet and program impacting multi-trait EPDs with added performance. Offering 3 embryos with no guarantee possible.

- CA-BPTG669514 TRIPLE C SINGLETARY S3H
- CA-BPTG790139 CCR COWBOY CUT 5048Z
- US_2427254 CCR MS 4045 TIME 7322T
- WS PROCLAMATION E202
- US_2735698 CLR5 GRADE-A 875 A
- US_2974794 WS MISS SUGAR C4
- US_2731288 WS ANISE A71

Buyer:
 Price:

- CA-BPG714342 WHEATLAND PREDATOR 922W
- CA-BPG775788 MRL EL TIGRE 52Z
- CA-BPTG768235 MRL MISS 836W \ HP-HOP
- MRL BLACK COUNTESS 5408C
- CA-BPG714350 BLACK BARON
- CA-BPG798891 MRL MISS 776Y
- CA-PG659139 MRL MISS 892S

	CE	BW	WW	YW	Milk	MCE	MWWT	STAY	DOC	CW	REA	FAT	MARB	YG	AAPI	ATI	API	TI
Dam: EPD	5.8	5.4	81.2	110.5	24.7	1	65.3	15.7	12	25.2	0.99	-0.111	-0.19		99.24	67.56	99.24	67.56
Dam: Acc	0.46	0.49	0.45	0.44	0.3	0.3	0.35	0.37	0.38	0.42	0.38	0.34	0.36					
Dam: Rk	75%	85%	35%	55%	55%	90%	50%	40%	35%	50%	20%	30%	95%			85%	75%	
Sire: EPD	13.6	0.5	97.1	145.1	26.3	7.8	74.9	17.1	18.3	35.7	0.63	-0.05	0.55		168.08	102.05	168.08	102.05
Sire: Acc	0.83	0.94	0.93	0.93	0.83	0.8	0.86	0.59	0.88	0.8	0.73	0.66	0.78					
Sire: Rk	10%	10%	3%	3%	45%	10%	10%	25%	1%	15%	95%	100%	1%			1%	1%	



Lot **46** x **WOONALLEE PEAR R695**
ELITE NITROUS
 Goldstar Genetics

Simmental
 3 embryos
 goldstargenetics.com.au



Embryos Sire: ELITE NITROUS ECCPN106



Donor: WOONALLEE PEAR R695 WEEPR695

R695 is a homo poll, homo black cow we purchased in the Woonallee 2022 female sale. Her extra frame and refinement whilst maintaining great depth and balance took our eye. Elite Nitrous was the Elite sale topper in 2019 with a massive 158cm2 ema. This joining could produce offspring with power and a bit of extra lift and capacity. Selling 3 conventional embryos with a guarantee of 1 pregnancy if implanted by a certified embryologist.

- PEDBX728 SVF STEEL FORCE S701 (P)(B)
- PEDPX1208 FBFI COMBUSTIBLE (P)(B)
- PEDPX1207 LAZY H BURN BABY BURNR34
- ELITE NITROUS
- IMCPW137*01 TNT DYNAMITE BLACK L137 (P)(B)
- PEDPX1202 JENI BLACK WHAMMY 1W (P)(B)
- PEDPX1201 ROLLING KAREN 11K

Buyer:
 Price:

- IMCPL138 MRL MISSILE 138C (P)(B)
- WEE3P393 WOONALLEE P393 (P)(AI)(B)
- WEB21608 WEBB DEW IT RIGHT J0608 (P)(AI)(B)
- WOONALLEE PEAR R695
- IMCPK323 LFE THE RIDDLER 323B (P)(B)
- WEEPN378 WOONALLEE PEAR N378 (P)(AI)(B)
- WEBPE059 WEBB PEAR E059 (P)(B)

	CE	BW	WW	YW	Milk	MCE	MWWT	STAY	DOC	CW	REA	FAT	MARB	YG	AAPI	ATI	API	TI
Dam: EPD	8.7	5	77.3	112.6	24.9	5.3	63.6	17	13.3	20.5	0.53	-0.044	0.12	-0.23	62.44	37.06	121.09	72.64
Dam: Acc	0.44	0.5	0.51	0.51	0.24	0.24	0.33	0.32	0.43	0.39	0.39	0.33	0.4	0.32				
Dam: Rk	70%	90%	50%	60%	20%	60%	30%	35%	40%	80%	95%	15%	45%	90%	55%	80%	60%	65%
Sire: EPD	8.2	6.5	92.6	147.2	18.7	4.5	65	16.1	13.9	47.5	1.09	-0.103	-0.3	-0.45	71.95	94.46	103.16	71.13
Sire: Acc	0.48	0.52	0.5	0.49	0.27	0.3	0.35	0.38	0.41	0.44	0.42	0.36	0.39	0.35				
Sire: Rk	70%	100%	10%	4%	75%	70%	25%	45%	30%	5%	10%	90%	100%	30%	30%	10%	90%	75%



Lot **47** x **WOONALLEE PEAR R695**
HOBBS LIVESTOCK RENOWNED MERCH
 Goldstar Genetics

Simmental
 3 embryos
 goldstargenetics.com.au



Embryos Sire: HOBBS LIVESTOCK RENOWNED MERCH SHLPR004



Donor: WOONALLEE PEAR R695 WEEPR695

R695 is a homo poll, homo black cow we purchased in the Woonallee 2022 female sale. Her extra frame and refinement whilst maintaining great depth and balance took our eye. Similar to lot 46, this time with Hobbs Livestock Renowned Merch R4. This joining could produce offsprings with power a bit of extra lift and capacity. Selling 3 conventional embryos with a guarantee of 1 pregnancy if implanted by a certified embryologist.

- IMUPF623 MR HOC BROKER (P)(B)
- PEDPX2136 RF MERCHANT 481B (P)(B)
- PEDBX749 TLG FLIRTIN WITH YOU (P)
- HOBBS LIVESTOCK RENOWNED MERCH
- PEDPX1807 NCB COBRA 47Y (P)(B)
- PEDPX1809 LFE BS VIOLET 641A (P)(B)
- PEDPX1808 LFE BS VIOLET 128Z

Buyer:

Price:

- IMCPL138 MRL MISSILE 138C (P)(B)
- WEE3P393 WOONALLEE P393 (P)(A)(B)
- WEB2J608 WEBB DEW IT RIGHT J0608 (P)(A)(B)
- WOONALLEE PEAR R695
- IMCPK323 LFE THE RIDDLER 323B (P)(B)
- WEEP378 WOONALLEE PEAR N378 (P)(A)(B)
- WEBPE059 WEBB PEAR E059 (P)(B)

	CE	BW	WW	YW	Milk	MCE	MWWT	STAY	DOC		CW	REA	FAT	MARB	YG	AAPI	ATI	API	TI
Dam: EPD	8.7	5	77.3	112.6	24.9	5.3	63.6	17	13.3		20.5	0.53	-0.044	0.12	-0.23	62.44	37.06	121.09	72.64
Dam: Acc	0.44	0.5	0.51	0.51	0.24	0.24	0.33	0.32	0.43		0.39	0.39	0.33	0.4	0.32				
Dam: Rk	70%	90%	50%	60%	20%	60%	30%	35%	40%		80%	95%	15%	45%	90%	55%	80%	60%	65%
Sire: EPD	11.5	2.2	89.7	135.6	18.9	8.9	63.8	12.7	4.8		14.9	0.67	-0.09	-0.2	-0.41	11.68	7.83	111.16	77.02
Sire: Acc	0.45	0.47	0.46	0.46	0.23	0.28	0.31	0.35	0.41		0.41	0.4	0.35	0.38	0.33				
Sire: Rk	35%	50%	15%	15%	70%	10%	30%	80%	100%		95%	80%	65%	95%	45%	100%	100%	80%	45%



Lot **48** x **WOMBRAMURRA XSIM MISS STRIKE L**
HOBBS LIVESTOCK RENOWNED MERCH
 Goldstar Genetics

Simmental
 6 embryos
 goldstargenetics.com.au



Embryos Sire: HOBBS LIVESTOCK RENOWNED MERCH SHLPR004

When creating embryos it is important to match the right bull with the right cow and that's what we have done here! These embryos are going to be very thick black calves that should have great figures. Both the Sire and Dam have come from top Simmental studs and we are excited to see how they will grow out. Selling 6 conventional embryos with a guarantee of 33% pregnancy if implanted by a certified embryologist.



Donor: WOMBRAMURRA XSIM MISS STRIKE L LGP3L2083

- IMUPF623 MR HOC BROKER (P)(B)
- PEDPX2136 RF MERCHANT 481B (P)(B)
- PEDBX749 TLG FLIRTIN WITH YOU (P)
- HOBBS LIVESTOCK RENOWNED MERCH
- PEDPX1807 NCB COBRA 47Y (P)(B)
- PEDPX1809 LFE BS VIOLET 641A (P)(B)
- PEDPX1808 LFE BS VIOLET 128Z

Buyer:

Price:

- PEDBX608 TRIPLE C SINGLETARY S3H (P)(B)
- IMUPH5048 CCR COWBOY CUT 5048Z (P)(B)
- PEDBX889 CCR MS 4045 TIME 7322T
- WOMBRAMURRA XSIM MISS STRIKE L
- IMU2B076 GW LUCKY ACE 076TS (P)(B)
- PED2X1383 XSIM MISS L STRIKE H2023 (P)(B)
- PED3X3968+03 GW MISS LUCKY STRIKE 312 (P)

	CE	BW	WW	YW	Milk	MCE	MWWT	STAY	DOC		CW	REA	FAT	MARB	YG	AAPI	ATI	API	TI
Dam: EPD	11.6	3.2	88.4	130.1	22.3	5.7	66.5	13.7	10.5		23.7	0.72	-0.078	0.26	-0.36	44.47	38.91	134.83	86.04
Dam: Acc	0.22	0.23	0.22	0.22	0.23	0.21	0.23	0.2	0.21		0.22	0.21	0.18	0.2	0.18				
Dam: Rk	35%	65%	15%	20%	40%	55%	20%	75%	80%		70%	70%	45%	20%	65%	90%	80%	30%	15%
Sire: EPD	11.5	2.2	89.7	135.6	18.9	8.9	63.8	12.7	4.8		14.9	0.67	-0.09	-0.2	-0.41	11.68	7.83	111.16	77.02
Sire: Acc	0.45	0.47	0.46	0.46	0.23	0.28	0.31	0.35	0.41		0.41	0.4	0.35	0.38	0.33				
Sire: Rk	35%	50%	15%	15%	70%	10%	30%	80%	100%		95%	80%	65%	95%	45%	100%	100%	80%	45%



Lot **49** **MAEFAIR TEMPE T29 (PB)***
Maefair Murray Greys

Reg N^o: GEB T29
D.O.B: 05/08/2022
Age: 21 months

Murray Grey
Bull



This bull is long as a train & he weighs, well balanced and structurally sound, there is nothing extreme about him at all. Looking forward to his scanning data as he appears to carry a lot of EMA on the top. Absolute quality offering which we are extremely proud to have bred. Tight in the sheath, blooded, 3 day sickness vaccinated & sire varified. Will be scanned prior to the sale and results to be added to MG Breedplan prior. Worthy of your inspection.

JOMAL GLEN EARTHQUAKE E21 (PB)
MONTEREY HAMERSLEY H204 (PB)
MONTEREY MISS OPAL A308 (PB) (ET)
Sire: MONTEREY MIGHTY MAN M79 (PB)*
MONTEREY FREIGHT TRAIN B132 (PB)
MONTEREY MILKMAID F31 (PB)
MONTEREY MILKMAID B122 (PB)
MONTEREY COUGAR C72 (PB)
MELALEUCA GHANDI G112 (PB)
MELALEUCA MINNOW Z95 (PB)
Dam: WOODBOURN MISS SYBIL N94 (PB)*
KELSO CRACKER C17 (TW) (PB)
WOODBOURN MISS SYBIL J102 (PB)
WOODBOURN MISS SYBIL D36 (PB)

Buyer: Price:

	Calving Ease DIR (%)	Calving Ease DTRS (%)	Gestation Length (days)	Birth Wt (kg)	200 Day Wt (kg)	400 Day Wt (kg)	600 Day Wt (kg)	Mat Cow Wt (kg)	Milk (kg)	Scrotal Size (cm)	Days to Calving (days)	Carcase Wt (kg)	Eye Muscle Area (sq cm)	Rib Fat (mm)	Rump Fat (mm)	Retail Beef Yield (%)	IMF (%)
EBV	-2.4	+0.2	-2	+5.0	+39	+62	+80	+73	+7	+1.0	-	+56	+2.7	-1.1	-1.5	+2.2	-0.5
Acc	0.39	0.3	0.48	0.76	0.68	0.67	0.63	0.51	0.41	0.41	-	0.54	0.35	0.41	0.41	0.38	0.36
Ave	-0.8	+0.0	-0.9	+3.8	+26	+42	+59	+61	+4	+0.6	-1.9	+37	+1.9	-0.3	-0.3	+1.1	+0.0



Lot **50** **MAEFAIR TALBINGO T30 (PB)***
Maefair Murray Greys

Reg N^o: GEB T30
D.O.B: 11/08/2022
Age: 21 months

Murray Grey
Bull



Junior Champion Murray Grey Bull at the 2024 Sydney Royal Easter Show. Again So much style, a quality slick coat and displaying fantastic structural integrity. Very docile, tight in the sheath, blooded, 3 day sickness vaccinated & sire varified. Will be scanned prior to the sale and results to be added to MG Breedplan prior. A very handy dark grey bull which is worth inspection.

JOMAL GLEN EARTHQUAKE E21 (PB)
MONTEREY HAMERSLEY H204 (PB)
MONTEREY MISS OPAL A308 (PB) (ET)
Sire: MONTEREY MIGHTY MAN M79 (PB)*
MONTEREY FREIGHT TRAIN B132 (PB)
MONTEREY MILKMAID F31 (PB)
MONTEREY MILKMAID B122 (PB)
MONTEREY BRAZEN (PB)
MONTEREY BRANDY BOY H4 (PB) (AI)
MONTEREY BRANDY A74 (PB)
Dam: MONTEREY JEANNIE K315 (PB)*
MONTEREY DARK KNIGHT D318 (PB)
MONTEREY JEANNIE G245 (PB)
MONTEREY JEANNIE C337 (PB)

Buyer: Price:

	Calving Ease DIR (%)	Calving Ease DTRS (%)	Gestation Length (days)	Birth Wt (kg)	200 Day Wt (kg)	400 Day Wt (kg)	600 Day Wt (kg)	Mat Cow Wt (kg)	Milk (kg)	Scrotal Size (cm)	Days to Calving (days)	Carcase Wt (kg)	Eye Muscle Area (sq cm)	Rib Fat (mm)	Rump Fat (mm)	Retail Beef Yield (%)	IMF (%)
EBV	-4	+0.3	-0.7	+5.7	+34	+53	+72	+75	+6	+1.0	-	+47	+2.4	-0.9	-1.2	+1.7	-0.2
Acc	0.37	0.25	0.46	0.76	0.68	0.67	0.63	0.5	0.39	0.41	-	0.52	0.31	0.37	0.37	0.34	0.31
Ave	-0.8	+0.0	-0.9	+3.8	+26	+42	+59	+61	+4	+0.6	-1.9	+37	+1.9	-0.3	-0.3	+1.1	+0.0



Lot **51** **MAEFAIR TURRMURRA T24 (PB)***
Maefair Murray Greys

Reg N^o: GEB T24
D.O.B: 13/07/2022
Age: 22 months

Murray Grey
Bull



Grand Champion Murray Grey Bull & Supreme Exhibit at the 2024 Sydney Royal Easter Show. Standout young sire of the T drop. So much style, power and breed character all wrapped in a quality slick coat and displaying fantastic structural integrity. Very docile, oozes stud sire and high end commercial potential. Tight in the sheath, blooded, 3 day sickness vaccinated & sire varified. Will be scanned prior to the sale and results to be added to MG Breedplan prior. Maefair will retain a 50% share in all international semen sales. Well worth a look

- JOMAL GLEN EARTHQUAKE E21 (PB)
- MONTEREY HAMERSLEY H204 (PB)
- MONTEREY MISS OPAL A308 (PB) (ET)
- Sire: MONTEREY MIGHTY MAN M79 (PB)*
- MONTEREY FREIGHT TRAIN B132 (PB)
- MONTEREY MILKMAID F31 (PB)
- MONTEREY MILKMAID B122 (PB)
- EWLWARRA SANDS FALCON F33 (PB)
- TULLIBARDINE JEOPARDY J14 (PB) (AI)
- TULLIBARDINE KATIE E46 (PB) (AI)
- Dam: WALLAWONG LOLITA M84 (PB)*
- BUNDALEER CASH FLOW Y6 (PB)
- BUNDALEER LOLITA D24 (PB)
- BUNDALEER LOLITA S125 (PB) (ET)

Buyer: Price:

	Calving Ease DIR (%)	Calving Ease DTRS (%)	Gestation Length (days)	Birth Wt (kg)	200 Day Wt (kg)	400 Day Wt (kg)	600 Day Wt (kg)	Mat Cow Wt (kg)	Milk (kg)	Scrotal Size (cm)	Days to Calving (days)	Carcase Wt (kg)	Eye Muscle Area (sq cm)	Rib Fat (mm)	Rump Fat (mm)	Retail Beef Yield (%)	IMF (%)
EBV	-3.7	-0.5	-2.1	+5.2	+36	+54	+75	+68	+2	+1.1	-	+48	+2.6	-0.7	-1	+17	-0.2
Acc	0.38	0.28	0.47	0.75	0.68	0.68	0.64	0.51	0.41	0.44	-	0.55	0.34	0.41	0.4	0.38	0.35
Ave	-0.8	+0.0	-0.9	+3.8	+26	+42	+59	+61	+4	+0.6	-19	+37	+1.9	-0.3	-0.3	+11	+0.0



Lot **52** **DEHAVALYN TALISMAN (PB)***
Dehavalyn Murray Greys

Reg N^o: CPE T17
D.O.B: 07/06/2022
Age: 23 months

Murray Grey
Bull



A moderate birthweight, mid-maturing bull that carries a fantastic carcass sure to positively influence the yield and meat quality of his offspring. By Limitless, a leading sire from the West Australian Monterey herd and out of a cow purchased from the same program whose sons have averaged \$11,500. An upstanding and free moving young sire ready to get to work.

- YAMBA BONANZA B32 (PB)
- MONTEREY GIBRALTAR G303 (PB)
- MONTEREY JOYCE Y151 (PB)
- Sire: MONTEREY LIMITLESS L198 (PB)*
- MONTEREY REPORT CARD (PB) (ET)
- MONTEREY SHOWTIME C47 (TW) (PB)
- MONTEREY SHOWTIME W29 (PB)
- MONTEREY BARCOO (PB)
- MONTEREY GALACTIC G125 (PB)
- MONTEREY MARIAH D284 (PB)
- Dam: MONTEREY OPAL N72 (PB)*
- MONTEREY HORNBLOWER H277 (PB)
- MONTEREY OPAL L142 (PB)
- MONTEREY OPAL J127 (TW) (PB)

Buyer: Price:

	Calving Ease DIR (%)	Calving Ease DTRS (%)	Gestation Length (days)	Birth Wt (kg)	200 Day Wt (kg)	400 Day Wt (kg)	600 Day Wt (kg)	Mat Cow Wt (kg)	Milk (kg)	Scrotal Size (cm)	Days to Calving (days)	Carcase Wt (kg)	Eye Muscle Area (sq cm)	Rib Fat (mm)	Rump Fat (mm)	Retail Beef Yield (%)	IMF (%)
EBV	+0.3	-0.9	-0.6	+4.2	+26	+47	+58	+56	+6	+1.8	-	+39	+2.3	-0.3	-0.5	+1.4	-0.2
Acc	0.38	0.27	0.41	0.62	0.55	0.55	0.55	0.47	0.31	0.47	-	0.47	0.37	0.42	0.42	0.39	0.33
Ave	-0.8	+0.0	-0.9	+3.8	+26	+42	+59	+61	+4	+0.6	-19	+37	+1.9	-0.3	-0.3	+11	+0.0





HERD IT ALL

YOUR SOFTWARE SOLUTION



Our game changing 'Linear classification app'

Next step in herd management.

Fully Integrated

Fully Cloud based with ability to work and record offline.
'Software applications for breed societies, stud breeders and the progressive commercial breeder.'





Tailored to your needs.

Including: Integrated breed society Herd Book management and stud level herd management applications. Greatly increases time and cost efficiencies for the smaller breed societies.

Seamless Data capture: anything, anywhere, anytime. Including 'offline'

Breed Societies can tailor their linear classification data collection, analysis and reporting. Fully integrated with ABRI and major databases providers for breedplan.

Stud and commercial Breeder benefits include:

-  Longevity and herd efficiency improvements
-  Improves sire, donor, replacement heifer and culling selections
-  'Real' sale data to offer buyers to improve their selections.
-  Linear classification App works as a 'do it yourself' cost effective application for 'in herd use only or as official tool for certified classifiers'. Includes learning modules to improve your knowledge.



For more information visit www.herditall.com
0429 750 590 * 0407 224 999 * info@herditall.com

Follow us



