

Waroona Murray Greys Production Sale

Friday 18th August, 2023 - Commencing at 12pm

**Waroona
550 Packham Drive
MOLONG NSW 2866**

Stud Bulls Stud Females PTIC Commercial Females

WAROONA MURRAY GREY STUD WELCOME

Welcome to the 2023 Waroona Murray Grey Production Sale.

We have selected 14 bulls for consideration for stud and commercial use from a range of sires in use in the stud including Waroona France P16, Waroona Houston N1, Woodbourn Larry L9 and Ayr Park Pete W1.

We believe these represent the opportunity to select bulls to meet your requirements including heifer mating through to bulls to meet a range of markets. This is important as the industry faces the current challenging circumstances following the best prices we have ever seen.

The bulls are presented for sale in order of age from youngest to oldest.

This year we are offering 11 proven breeding females from across the female families in the stud. Three have calves at foot at time of printing of the sale catalogue and we expect more calves to be born prior to sale day. We will provide further information on a supplementary sheet prior to and on sale day.

My family and I look forward to seeing you on sale day and wish all successful purchasers well with your purchase. Thanks also to under bidders for helping make the sale a success.

Graham Hobbs

Waroona Murray Greys Production Sale

Friday 18th August, 2023 - Commencing at 12pm

Waroona Murray Grey Stud

Graham Hobbs

M: 0429 076 617

E: g.khobbs@bigpond.com

Address

Waroona

550 Packham Drive

MOLONG NSW 2866

Kevin Miller, Whitty, Lennon & Co.



AuctionsPlus

Interfaced on AuctionsPlus

Kevin Miller, Whitty, Lennon & Co.

106 Lachlan Street

Forbes NSW 2871

Ph: 02 6852 3355

<http://www.kmiller.com.au/>

Luke Whitty - M: 0427 524 442

Josh Crosby - M: 0490 813 260

Jack Whitty - M: 0407 668 669

Atkins Marketing Livestock

John Atkins

M: 0428 690 267

E: atkinsak@bigpond.com



All lots are JBAS 8

Cattle available for inspection 10am on sale day or prior by arrangement with vendor.

Light refreshments and lunch provided.

Numerous accommodation options in Molong and Orange.

The buyer friendly **Helmsman system** is being used where bids are placed over time and all lots knocked down together (see details under Sale). Enables us to talk to everyone and enjoy the day also.

1 WAROONA SAM (PB)

DOB: 19/11/2021

Colour: Silver

Tattoo:ASH S71

Sex: M

WOODBOURN FRANCE F48 (PB)

KELSO CRACKER C17 (PB)
WOODBOURN PEPPER A9 (PB)

Sire: WAROONA FRANCE P16 (PB)

SABER MIMOSA J28 (PB)

WOODBOURN FLOYD F42 (PB)
SABER MIMOSA F22 (PB)

MONTEREY BLITZEM (PB)

WILLALOOKA XEROX X64 (PB) (AI)
MONTEREY JOYCE Y129 (PB) (AI)

Dam: WAROONA DAINTY H22 (PB)

WAROONA DAINTY Z8 (PB)

AUSGREY DRAGONHEART (PB)
WAROONA DAINTY 22ND (PB)



June 2023 Murray Grey BREEDPLAN

	CED	CED DTRS	GL	BW	200	400	600	MCW	MILK	SS	DTC	CW	EMA	RIB	RUMP	RBV	IMF
EBV	-2.4	-0.6	-0.6	+4.4	+26	+47	+55	+4	+1.0			+34	+0.6	-1.1	-1.5	+1.2	-0.7
Acc	37%	26%	48%	77%	69%	69%	69%	42%	66%			58%	46%	55%	55%	50%	42%

Notes: Waroona Sam S71 represents the opportunity to purchase a sire with the proven combination of bloodlines of Woodbourn France and Monterey Blitzem that have performed so well for us at Waroona. His sire Waroona France P16 is leaving a strong line of females in the Waroona herd.

\$ Index Values		
Vealer Terminal	Super Market	EU Heavy Steer
+\$32	+\$37	+\$45

Purchaser:\$

2 WAROONA SHANE (PB)

DOB: 12/11/2021

Colour: Silver

Tattoo:ASH S69

Sex: M

NAWARRA BANANA BENDER (PB)

GNOLEDA ZAC (PB)
SPRINGWELL BANANA T43 (PB)

Sire: WOODBOURN LARRY L9 (PB)

WOODBOURN MISS CARRIE Z85 (PB)

THE GLEN HONESTY W67 (PB)
WOODBOURN CARRIE X2 (PB)

WOODBOURN FRANCE F48 (PB)

KELSO CRACKER C17 (PB)
WOODBOURN PEPPER A9 (PB)

Dam: WAROONA TAREE N5 (PB)

WAROONA TAREE E25 (PB)

MONTEREY BLITZEM (PB)
WAROONA TAREE Z1 (PB)



June 2023 Murray Grey BREEDPLAN

	CED	CED DTRS	GL	BW	200	400	600	MCW	MILK	SS	DTC	CW	EMA	RIB	RUMP	RBV	IMF
EBV	-1.2	-0.7	-1.8	+4.3	+31	+42	+69	+4	-1.4	+0.9	+44	+1.9	-0.9	-1.2	+1.8	-0.4	
Acc	40%	29%	49%	77%	69%	68%	70%	44%	67%	27%	58%	47%	55%	55%	51%	44%	

Notes: Moderate birthweight at 4.4 above average growth and retail beef yield and average EMA make Waroona Shane S69 another safe sire option for a range of markets.

\$ Index Values		
Vealer Terminal	Super Market	EU Heavy Steer
+\$48	+\$33	+\$59

2 Purchaser:\$

3 WAROONA STEVE (PB)

DOB: 05/11/2021

Colour: Silver

Tattoo:ASH S62

Sex: M

NAWARRA BANANA BENDER (PB)

GNOLEDA ZAC (PB)
SPRINGWELL BANANA T43 (PB)**Sire: WOODBOURN LARRY L9 (PB)**

WOODBOURN MISS CARRIE Z85 (PB)

THE GLEN HONESTY W67 (PB)
WOODBOURN CARRIE X2 (PB)

WOODBOURN FRANCE F48 (PB)

KELSO CRACKER C17 (PB)
WOODBOURN PEPPER A9 (PB)**Dam: WAROONA PEARL M37 (PB)**

WAROONA PEARL C11 (PB)

WAROONA VERBAL (PB)
WAROONA PEARL 3RD+97 (PB)**June 2023 Murray Grey BREEDPLAN**

	CED	CED DTRS	GL	BW	200	400	600	MCW	MILK	SS	DTC	CW	EMA	RIB	RUMP	RBV	IMF
EBV	-0.1	-1.2	-1.9	+3.7	+27	+47	+70	+3	+0.4	-0.9	+45	+1.8	-0.7	-1.0	+1.4	-0.2	
Acc	40%	29%	49%	77%	70%	69%	71%	44%	67%	27%	60%	48%	56%	56%	52%	45%	

Notes: Waroona Steve S62 is another of the safe consistent Larry bulls able to meet a range of markets as evidenced by his index values.

\$ Index Values		
Vealer Terminal	Super Market	EU Heavy Steer
+\$44	+\$42	+\$65

Purchaser:\$

4 WAROONA SUGAR (PB)

DOB: 27/10/2021

Colour: Grey

Tattoo:ASH S60

Sex: M

WOODBOURN LEXUS L120 (PB)

YAMBA HORTINESS (PB)
WOODBOURN MISS JEANETTE G36 (PB)**Sire: AYR PARK PETE P1 (PB)**

AYR PARK WALLFLOWER G158 (PB)

TULLIBARDINE DELECTABLE D88 (PB)
AYR PARK WALLFLOWER W12 (PB) (AI)

WOODBOURN FRANCE F48 (PB)

KELSO CRACKER C17 (PB)
WOODBOURN PEPPER A9 (PB)**Dam: WAROONA NANCY P57 (PB)**

GLENLIAM FARM NANCY M21 (PB)

GLENLIAM FARM DROVER D107 (PB)
THE GLEN NANCY H070 (GR2)**June 2023 Murray Grey BREEDPLAN**

	CED	CED DTRS	GL	BW	200	400	600	MCW	MILK	SS	DTC	CW	EMA	RIB	RUMP	RBV	IMF
EBV	-1.6	-0.1	+0.2	+5.3	+26	+43	+64	+1	+1.2			+38	+2.9	+0.3	+0.5	+1.2	+0.0
Acc	35%	26%	45%	75%	66%	65%	67%	35%	65%			55%	43%	51%	51%	47%	40%

Notes: Waroona Sugar S60 is the only Ayr Park Pete W1 bull in the sale. He represents the opportunity to purchase a bull from one of our young P females combining genetics from Woodbourn and Glenliam Farm. His well above average EBVs and index figures verify our decision to include him in the sale.

\$ Index Values		
Vealer Terminal	Super Market	EU Heavy Steer
+\$42	+\$44	+\$68

Purchaser:\$

5 WAROONA SHAY (PB)

DOB: 10/10/2021

Colour: Silver

Tattoo:ASH S56

Sex: M

NAWARRA BANANA BENDER (PB)

GNOLEDA ZAC (PB)
SPRINGWELL BANANA T43 (PB)

Sire: WOODBOURN LARRY L9 (PB)

WOODBOURN MISS CARRIE Z85 (PB)

THE GLEN HONESTY W67 (PB)
WOODBOURN CARRIE X2 (PB)

WOODBOURN FRANCE F48 (PB)

KELSO CRACKER C17 (PB)
WOODBOURN PEPPER A9 (PB)

Dam: WAROONA WENDY M45 (PB)

WAROONA WENDY H6 (PB)

SHELLGARDI MISTER REALITY (PB) (AI)
WAROONA WENDY Y34 (PB)



June 2023 Murray Grey BREEDPLAN

	CED	CED DTRS	GL	BW	200	400	600	MCW	MILK	SS	DTC	CW	EMA	RIB	RUMP	RBY	IMF
EBV	-2.2	-1.4	-1.1	+4.8	+29	+37	+65		+4	+0.3	-0.7	+35	+1.0	-0.7	-0.9	+1.2	-0.3
Acc	40%	29%	49%	77%	70%	69%	71%		44%	69%	27%	60%	48%	56%	56%	52%	45%

Notes: Waroona Shay S56 is a versatile bull capable of producing progeny for a range of markets. True to form for Larry sons he has above average growth figures and a breed average milk EBV of +4. A safe sire for any herd.

\$ Index Values		
Vealer Terminal	Super Market	EU Heavy Steer
+\$39	+\$28	+\$54

Purchaser:\$

6 WAROONA STEFAN (PB)

DOB: 28/09/2021

Colour: Silver

Tattoo:ASH S49

Sex: M

NAWARRA BANANA BENDER (PB)

GNOLEDA ZAC (PB)
SPRINGWELL BANANA T43 (PB)

Sire: WOODBOURN LARRY L9 (PB)

WOODBOURN MISS CARRIE Z85 (PB)

THE GLEN HONESTY W67 (PB)
WOODBOURN CARRIE X2 (PB)

WOODBOURN FRANCE F48 (PB)

KELSO CRACKER C17 (PB)
WOODBOURN PEPPER A9 (PB)

Dam: WAROONA NICKY J25 (PB)

WAROONA NICKY Z48 (PB)

WAROONA SPIRIT W6 (PB)
WAROONA NICKY 2ND (PB)



June 2023 Murray Grey BREEDPLAN

	CED	CED DTRS	GL	BW	200	400	600	MCW	MILK	SS	DTC	CW	EMA	RIB	RUMP	RBY	IMF
EBV	-1.1	-1.5	-1.7	+4.2	+27	+36	+68		+1	+0.0	+0.1	+39	+1.5	-1.6	-2.1	+2.3	-0.7
Acc	40%	29%	49%	77%	70%	69%	71%		45%	69%	28%	60%	49%	59%	59%	55%	48%

Notes: Waroona Stefan S49 continues the consistency of the Larry bulls in the sale. With outstanding length, growth and butt development he is a very good sire prospect.

\$ Index Values		
Vealer Terminal	Super Market	EU Heavy Steer
+\$44	+\$28	+\$59

4 Purchaser:\$

7 WAROONA SANTIAGO (PB)

DOB: 26/09/2021 Colour: Silver Tattoo:ASH S47 Sex: M

NAWARRA BANANA BENDER (PB) GNOLEDA ZAC (PB)
 SPRINGWELL BANANA T43 (PB)

Sire: **WOODBOURN LARRY L9 (PB)**

WOODBOURN MISS CARRIE Z85 (PB) THE GLEN HONESTY W67 (PB)
 WOODBOURN CARRIE X2 (PB)

GOLDEN HERO H7 (PB) MONTEREY BLITZEM (PB)
 GOLDEN ADELLE C22 (PB)

Dam: **WAROONA TAREE N15 (PB)**

WAROONA TAREE C48 (PB) MONTEREY SUNDOWNER Z26 (PB)
 WAROONA TAREE Y19 (PB)



June 2023 Murray Grey BREEDPLAN

	CED	CED DTRS	GL	BW	200	400	600	MCW	MILK	SS	DTC	CW	EMA	RIB	RUMP	RBV	IMF
EBV	-2.8	-1.7	-1.3	+4.2	+28	+42	+58		+3	-0.7	+0.8	+38	+1.7	-1.0	-1.4	+1.6	-0.4
Acc	38%	27%	48%	77%	69%	68%	70%		42%	68%	27%	58%	47%	55%	55%	51%	44%

Notes: Waroona Santiago S47 Is another dark silver bull with outstanding carcass attributes highlighted by his above average EMA and double breed average Retail Beef Yield.

\$ Index Values		
Vealer Terminal	Super Market	EU Heavy Steer
+\$38	+\$30	+\$45

Purchaser:\$.....

8 WAROONA SETH (PB)

DOB: 18/09/2021 Colour: Silver Tattoo:ASH S43 Sex: M

NAWARRA BANANA BENDER (PB) GNOLEDA ZAC (PB)
 SPRINGWELL BANANA T43 (PB)

Sire: **WOODBOURN LARRY L9 (PB)**

WOODBOURN MISS CARRIE Z85 (PB) THE GLEN HONESTY W67 (PB)
 WOODBOURN CARRIE X2 (PB)

GOLDEN HERO H7 (PB) MONTEREY BLITZEM (PB)
 GOLDEN ADELLE C22 (PB)

Dam: **WAROONA CLARETTE N8 (PB)**

WAROONA CLARETTE C55 (PB) MONTEREY SUNDOWNER Z26 (PB)
 WAROONA CLARETTE X40 (PB)



June 2023 Murray Grey BREEDPLAN

	CED	CED DTRS	GL	BW	200	400	600	MCW	MILK	SS	DTC	CW	EMA	RIB	RUMP	RBV	IMF
EBV	-1.7	-1.5	-1.5	+3.7	+27	+36	+57		+2	-0.3	-0.4	+35	+2.2	+0.2	+0.3	+0.9	+0.0
Acc	38%	27%	48%	77%	69%	68%	70%		43%	68%	27%	58%	47%	55%	55%	51%	44%

Notes: Waroona Seth S43 is an eye catching large framed, dark silver, deep bodied bull with excellent feet. His eye appeal is backed up with very good figures including and EMA of +2.2 and retail beef yield double breed average. Possibly the pick of the sale!

\$ Index Values		
Vealer Terminal	Super Market	EU Heavy Steer
+\$40	+\$31	+\$53

Purchaser:\$..... 5

9 WAROONA SAG (TW) (PB)

DOB: 18/09/2021

Colour: Silver

Tattoo:ASH S45

Sex: M

NAWARRA BANANA BENDER (PB)

GNOLEDA ZAC (PB)
SPRINGWELL BANANA T43 (PB)**Sire: WOODBOURN LARRY L9 (PB)**

WOODBOURN MISS CARRIE Z85 (PB)

THE GLEN HONESTY W67 (PB)
WOODBOURN CARRIE X2 (PB)

WAROONA HERO L16 (PB)

GOLDEN HERO H7 (PB)
WAROONA TAREE E56 (PB)**Dam: WAROONA MAREE N54 (PB)**

WAROONA MAREE J42 (PB)

WOODBOURN FRANCE F48 (PB)
WAROONA MAREE E24 (PB)**June 2023 Murray Grey BREEDPLAN**

	CED	CED DTRS	GL	BW	200	400	600	MCW	MILK	SS	DTC	CW	EMA	RIB	RUMP	RBV	IMF
EBV	-1.0	-1.2	-1.5	+3.7	+26	+37	+60		+3	+0.0		+38	+1.7	-1.1	-1.6	+1.8	-0.5
Acc	36%	25%	45%	72%	64%	63%	61%		40%	40%		51%	36%	43%	43%	40%	37%

Notes: Waroona Sag S45 is another son of Woodbourn Larry. If we were looking for a pair of bulls for a sire's progeny group we would match this fellow with the previous lot, they are almost identical in all respects including their EBVs, an impressive result given that he is a twin.

\$ Index Values		
Vealer Terminal	Super Market	EU Heavy Steer
+\$41	+\$30	+\$52

Purchaser:\$.....

10 WAROONA STEVEN (PB)

DOB: 14/09/2021

Colour: Silver

Tattoo:ASH S39

Sex: M

NAWARRA BANANA BENDER (PB)

GNOLEDA ZAC (PB)
SPRINGWELL BANANA T43 (PB)**Sire: WOODBOURN LARRY L9 (PB)**

WOODBOURN MISS CARRIE Z85 (PB)

THE GLEN HONESTY W67 (PB)
WOODBOURN CARRIE X2 (PB)

MONTEREY BLITZEM (PB)

WILLALOOKA XEROX X64 (PB) (AI)
MONTEREY JOYCE Y129 (PB) (AI)**Dam: WAROONA TAREE G26 (PB)**

WAROONA TAREE Z1 (PB)

WAROONA VERBAL (PB)
WAROONA TAREE 12TH (PB)**June 2023 Murray Grey BREEDPLAN**

	CED	CED DTRS	GL	BW	200	400	600	MCW	MILK	SS	DTC	CW	EMA	RIB	RUMP	RBV	IMF
EBV	-0.9	-0.9	-2.0	+3.1	+25	+33	+53		+3	-1.1	+0.7	+36	+1.7	-1.4	-1.8	+2.1	-0.7
Acc	40%	29%	49%	77%	70%	70%	71%		47%	69%	28%	60%	49%	59%	58%	54%	48%

Notes: Waroona Steven is a dark silver bull with an excellent temperament. He is a low birthweight moderate framed bull suited to a self-replacing herd targeting the local trade markets with an emphasis on vealer production.

\$ Index Values		
Vealer Terminal	Super Market	EU Heavy Steer
+\$41	+\$25	+\$47

6 Purchaser:\$.....

11 WAROONA SOCKS (PB)

DOB: 09/09/2021

Colour: Grey

Tattoo:ASH S35

Sex: M

CULLENYA HOUSTON (PB)

KELSO ELECTRON E22 (PB)
CULLENYA QUEENIE F12 (PB)**Sire: WAROONA HOUSTON N1 (PB)**

CRATLOE JULIA F46 (PB)

WILTSHIRE Y NOT (PB) (AI)
CRATLOE JULIA U48 (PB)

WOODBOURN LARRY L9 (PB)

NAWARRA BANANA BENDER (PB)
WOODBOURN MISS CARRIE Z85 (PB)**Dam: WAROONA MOONBEAM P5 (PB)**

GOLDEN MOONBEAM K25 (PB)

GOLDEN GLADIATOR G7 (PB)
GOLDEN MOONBEAM F10 (PB)

June 2023 Murray Grey BREEDPLAN																	
	CED	CED DTRS	GL	BW	200	400	600	MCW MILK	SS	DTC	CW	EMA	RIB	RUMP	RBY	IMF	
EBV	-1.6		-0.4	+3.8	+21	+35	+54		+2	+1.7		+31	+1.7	-0.2	-0.3	+0.7	+0.2
Acc	29%		42%	74%	67%	66%	68%		35%	67%		55%	41%	51%	51%	46%	37%

Notes: Waroona Socks S35 is grey son of Waroona Houston with moderate birthweight, even figures across the page and very good EMA and IMF.

\$ Index Values		
Vealer Terminal	Super Market	EU Heavy Steer
+\$30	+\$34	+\$53

Purchaser:\$

12 WAROONA STORM (PB)

DOB: 09/09/2021

Colour: Grey

Tattoo:ASH S36

Sex: M

CULLENYA HOUSTON (PB)

KELSO ELECTRON E22 (PB)
CULLENYA QUEENIE F12 (PB)**Sire: WAROONA HOUSTON N1 (PB)**

CRATLOE JULIA F46 (PB)

WILTSHIRE Y NOT (PB) (AI)
CRATLOE JULIA U48 (PB)

WOODBOURN FRANCE F48 (PB)

KELSO CRACKER C17 (PB)
WOODBOURN PEPPER A9 (PB)**Dam: WAROONA TAREE P7 (PB)**

WAROONA TAREE E11 (PB)

SHELLGARDI MISTER REALITY (PB) (AI)
WAROONA TAREE Y19 (PB)

June 2023 Murray Grey BREEDPLAN																	
	CED	CED DTRS	GL	BW	200	400	600	MCW MILK	SS	DTC	CW	EMA	RIB	RUMP	RBY	IMF	
EBV	-1.3	+0.0	+0.1	+4.1	+21	+33	+52		+2	+0.6		+31	+1.4	-0.6	-0.8	+1.3	-0.3
Acc	33%	25%	44%	74%	67%	66%	67%		38%	67%		55%	42%	51%	51%	46%	37%

Notes: Waroona Storm S36 is a dark grey bull by Waroona Houston with a moderate birthweight and great butt profile. He was the heaviest bull at 710 kg at weighing on 1 June 2023.

\$ Index Values		
Vealer Terminal	Super Market	EU Heavy Steer
+\$32	+\$30	+\$49

Purchaser:\$ 7

13 WAROONA SANTA (PB)

DOB: 02/09/2021

Colour: Silver

Tattoo:ASH S32

Sex: M

CULLENYA HOUSTON (PB)

KELSO ELECTRON E22 (PB)
CULLENYA QUEENIE F12 (PB)**Sire: WAROONA HOUSTON N1 (PB)**

CRATLOE JULIA F46 (PB)

WILTSHIRE Y NOT (PB) (AI)
CRATLOE JULIA U48 (PB)

WOODBOURN LARRY L9 (PB)

NAWARRA BANANA BENDER (PB)
WOODBOURN MISS CARRIE Z85 (PB)**Dam: WAROONA OPERA STAR P11 (PB)**

WAROONA OPERA STAR K13 (PB)

WOODBOURN FRANCE F48 (PB)
WAROONA OPERA STAR Z39 (PB)

June 2023 Murray Grey BREEDPLAN																	
	CED	CED DTRS	GL	BW	200	400	600	MCW	MILK	SS	DTC	CW	EMA	RIB	RUMP	RBY	IMF
EBV	-1.2		-0.7	+3.4	+22	+22	+35		+5	-0.2		+18	+0.3	+0.2	+0.4	+0.2	-0.1
Acc	30%		43%	74%	67%	66%	67%		35%	67%		54%	41%	48%	48%	44%	34%

Notes: Waroona Santa S32 is a soft easy doing bull by Waroona Houston N1. Note the low birthweight at 3.8 making him suitable for joining with heifers.

\$ Index Values		
Vealer Terminal	Super Market	EU Heavy Steer
+\$29	+\$19	+\$32

Purchaser:\$

14 WAROONA SANDY (PB)

DOB: 28/08/2021

Colour: Silver

Tattoo:ASH S30

Sex: M

CULLENYA HOUSTON (PB)

KELSO ELECTRON E22 (PB)
CULLENYA QUEENIE F12 (PB)**Sire: WAROONA HOUSTON N1 (PB)**

CRATLOE JULIA F46 (PB)

WILTSHIRE Y NOT (PB) (AI)
CRATLOE JULIA U48 (PB)

WOODBOURN LARRY L9 (PB)

NAWARRA BANANA BENDER (PB)
WOODBOURN MISS CARRIE Z85 (PB)**Dam: WAROONA MAREE P29 (PB)**

WAROONA MAREE J42 (PB)

WOODBOURN FRANCE F48 (PB)
WAROONA MAREE E24 (PB)

June 2023 Murray Grey BREEDPLAN																	
	CED	CED DTRS	GL	BW	200	400	600	MCW	MILK	SS	DTC	CW	EMA	RIB	RUMP	RBY	IMF
EBV	-1.9		-0.5	+4.0	+23	+32	+50		+3	+0.0		+31	+1.8	-0.7	-1.0	+1.5	-0.4
Acc	30%		43%	74%	67%	66%	68%		35%	67%		55%	42%	52%	52%	47%	38%

Notes: Waroona Sandy S30 is a well grown son of Waroona Houston ASH N1 our proven heifer bull. A bull with style and presence backed up by even EBVs. In our opinion the best of the Houston sons in the sale.

\$ Index Values		
Vealer Terminal	Super Market	EU Heavy Steer
+\$34	+\$27	+\$45

8 Purchaser:\$



LOT 3



LOT 4



LOT 5



LOT 6



LOT 7



LOT 8



LOT 9



LOT 10



LOT 11



LOT 12



15 WAROONA ALICE Q23 (PB)

DOB: 03/09/2019

Colour: Silver

Tattoo: ASH Q23

Sex: F

WATTLE DENE GIDO (PB)

KORELLA EXTRA SPECIAL D1 (PB)
 ORCADIA PARK MINETTE T14 (PB)

Sire: GANADO LIONEL (PB)

GANADO ELLEN (PB)

WATTLE DENE HUSQVANA (PB)
 MT VIEW ADEL Z194 (PB)

WOODBOURN FRANCE F48 (PB)

KELSO CRACKER C17 (PB)
 WOODBOURN PEPPER A9 (PB)

Dam: WAROONA ALICE K68 (PB)

WAROONA ALICE D11 (PB)

SHELLGARDI MISTER REALITY (PB) (AI)
 WAROONA ALICE Y22 (PB)



June 2023 Murray Grey BREEDPLAN

	CED	CED DTRS	GL	BW	200	400	600	MCW	MILK	SS	DTC	CW	EMA	RIB	RUMP	RBY	IMF
EBV	-0.9	-1.3	+0.1	+3.4	+20	+30	+43		+5	+0.1		+25	+0.2	-0.2	-0.3	+0.4	-0.1
Acc	35%	26%	42%	75%	61%	56%	57%		35%	30%		41%	27%	32%	32%	30%	26%

\$ Index Values

Vealer Terminal	Super Market	EU Heavy Steer
+\$27	+\$24	+\$36

Notes: Q23 is a Ganado Lionel daughter from our Alice family. Silver heifer calf at foot by Beamma Redline, DOB 6/05/2023.

14 Purchaser: \$

16 WAROONA DAINTY P33 (PB)

DOB: 15/09/2018

Colour: Silver

Tattoo:ASH P33

Sex: F

KELSO CRACKER C17 (PB)

KELSO YOGO Y13 (PB) (AI)
LINDSAY DONNA Z13 (GR2)**Sire: WOODBOURN FRANCE F48 (PB)**

WOODBOURN PEPPER A9 (PB)

JYNDARRA WARRIOR W3 (PB) (AI)
WOODBOURN MISS PEPPER X38 (PB)

MONTEREY BLITZEM (PB)

WILLALOOKA XEROX X64 (PB) (AI)
MONTEREY JOYCE Y129 (PB) (AI)**Dam: WAROONA DAINTY H22 (PB)**

WAROONA DAINTY Z8 (PB)

AUSGREY DRAGONHEART (PB)
WAROONA DAINTY 22ND (PB)**June 2023 Murray Grey BREEDPLAN**

	CED	CED DTRS	GL	BW	200	400	600	MCW	MILK	SS	DTC	CW	EMA	RIB	RUMP	RBY	IMF
EBV	-0.2	+0.3	-0.5	+3.7	+22	+37	+55		+4	+0.4	-0.9	+33	+1.2	-0.7	-0.8	+1.3	-0.6
Acc	46%	35%	54%	78%	71%	67%	67%		54%	45%	27%	57%	45%	53%	53%	50%	46%

Notes: Waroona Dainty P33 represents another opportunity to purchase a Woodbourn France daughter with a promising silver bull calf at foot by Beamma Redline, DOB 10/06/2023. She is a lovely silver cow with an even spread of EBVs right on breed average.

\$ Index Values

Vealer Terminal	Super Market	EU Heavy Steer
+\$36	+\$34	+\$53

Purchaser:\$.....

17 WAROONA WENDY N57 (PB)

DOB: 15/10/2017

Colour: Grey

Tattoo:ASH N57

Sex: F

GOLDEN HERO H7 (PB)

MONTEREY BLITZEM (PB)
GOLDEN ADELLE C22 (PB)**Sire: WAROONA HERO L16 (PB)**

WAROONA TAREE E56 (PB)

MONTEREY SUNDOWNER Z26 (PB)
WAROONA TAREE B27 (PB)

MONTEREY BLITZEM (PB)

WILLALOOKA XEROX X64 (PB) (AI)
MONTEREY JOYCE Y129 (PB) (AI)**Dam: WAROONA WENDY G46 (PB)**

WAROONA WENDY C7 (PB)

MONTEREY SUNDOWNER Z26 (PB)
WAROONA WENDY 14TH+97 (PB)**June 2023 Murray Grey BREEDPLAN**

	CED	CED DTRS	GL	BW	200	400	600	MCW	MILK	SS	DTC	CW	EMA	RIB	RUMP	RBY	IMF
EBV	-2.9	+0.0	+4.0	+21	+33	+44		-1	+0.1		+28	+2.1	-0.8	-1.1	+1.7	-0.7	
Acc	35%		45%	77%	64%	60%	61%		40%	32%		47%	35%	44%	44%	41%	37%

Notes: Waroona Wendy N57 is a soft grey matron with the capacity to breed well above herself. She has a cracking silver bull calf at foot by Beamma Redline, DOB 19/04/2023.

\$ Index Values

Vealer Terminal	Super Market	EU Heavy Steer
+\$29	+\$25	+\$38

Purchaser:\$..... 15

18 WAROONA TAREE Q14 (TW) (PB)

DOB: 08/08/2019

Colour: Silver

Tattoo:ASH Q14

Sex: F

NAWARRA BANANA BENDER (PB)

GNOLEDA ZAC (PB)
SPRINGWELL BANANA T43 (PB)

Sire: **WOODBOURN LARRY L9 (PB)**

WOODBOURN MISS CARRIE Z85 (PB)

THE GLEN HONESTY W67 (PB)
WOODBOURN CARRIE X2 (PB)

MONTEREY SUNDOWNER Z26 (PB)

MONTEREY SUNDOWNER+97 (PB)
MONTEREY MISS ANNABELLE W71 (PB)

Dam: **WAROONA TAREE D24 (PB)**

WAROONA TAREE 12TH (PB)

HILLVIEW MARCUS (PB) (AI)
WAROONA TAREE (PB)

June 2023 Murray Grey BREEDPLAN																	
	CED	CED DTRS	GL	BW	200	400	600	MCW	MILK	SS	DTC	CW	EMA	RIB	RUMP	RBY	IMF
EBV	-2.5	-1.8	-1.4	+3.9	+25	+36	+53		+1	-0.2	+0.7	+34	+1.6	-1.4	-1.9	+2.0	-0.8
Acc	41%	30%	48%	74%	65%	62%	63%		48%	43%	26%	51%	40%	47%	47%	44%	41%

Notes: Waroona Taree Q14 is a twin daughter of Woodbourn Larry L9. She is a larger young cow typical of Larry daughters. Mated with Beamma Redline from 22/09/2022 to 22/12/2022. PTIC

\$ Index Values		
Vealer Terminal	Super Market	EU Heavy Steer
+\$35	+\$24	+\$42

Purchaser:\$

19 WAROONA TAREE Q8 (PB)

DOB: 23/07/2019

Colour: Silver

Tattoo:ASH Q8

Sex: F

KELSO CRACKER C17 (PB)

KELSO YOGO Y13 (PB) (AI)
LINDSAY DONNA Z13 (GR2)

Sire: **WOODBOURN FRANCE F48 (PB)**

WOODBOURN PEPPER A9 (PB)

JYNDARRA WARRIOR W3 (PB) (AI)
WOODBOURN MISS PEPPER X38 (PB)

SHELLGARDI MISTER REALITY (PB) (AI)

SHELLGARDI MISTER CHARMER (PB) (AI)
WOODBOURN RADIANT R55 (PB)

Dam: **WAROONA TAREE E22 (PB)**

WAROONA TAREE X56 (PB)

GLENCAIRN HERCULES R31+96 (PB)
WAROONA TAREE 7TH+97 (PB)

June 2023 Murray Grey BREEDPLAN																	
	CED	CED DTRS	GL	BW	200	400	600	MCW	MILK	SS	DTC	CW	EMA	RIB	RUMP	RBY	IMF
EBV	-2.5	-0.8	+0.5	+5.2	+23	+35	+57		+4	+0.6	-0.8	+30	+1.3	-0.7	-0.9	+1.1	-0.2
Acc	48%	37%	55%	79%	71%	72%	70%		56%	45%	27%	61%	44%	51%	50%	48%	45%

Notes: ASH Q8 is another very good silver daughter of Woodbourn France from our Taree family. With a bit more milk she does a wonderful job on her calves to weaning. Mated with Waroona Houston N1 from 22/09/2022 to 22/11/2022. PTIC

\$ Index Values		
Vealer Terminal	Super Market	EU Heavy Steer
+\$30	+\$28	+\$47

16Purchaser:\$

20 WAROONA TAREE P52 (PB)

DOB: 08/10/2018

Colour: Silver

Tattoo:ASH P52

Sex: F

KELSO CRACKER C17 (PB)

KELSO YOGO Y13 (PB) (AI)
LINDSAY DONNA Z13 (GR2)**Sire: WOODBOURN FRANCE F48 (PB)**

WOODBOURN PEPPER A9 (PB)

JYNDARRA WARRIOR W3 (PB) (AI)
WOODBOURN MISS PEPPER X38 (PB)

SHELLGARDI MISTER REALITY (PB) (AI)

SHELLGARDI MISTER CHARMER (PB) (AI)
WOODBOURN RADIANT R55 (PB)**Dam: WAROONA TAREE E14 (PB)**

WAROONA TAREE Y25 (PB)

WAROONA VERBAL (PB)
WAROONA TAREE 11TH (PB)**June 2023 Murray Grey BREEDPLAN**

	CED	CED DTRS	GL	BW	200	400	600	MCW MILK	SS	DTC	CW	EMA	RIB	RUMP	RBY	IMF
EBV	-1.0	-0.7	+0.7	+4.1	+17	+30	+48	+5	+0.4	-0.5	+26	+1.0	-0.6	-0.7	+1.1	-0.3
Acc	49%	36%	56%	80%	74%	69%	70%	58%	44%	26%	59%	43%	49%	49%	47%	43%

Notes: Waroona Taree P52 is a stylish silver daughter of Woodbourn France mated with Beeamma Redline from 22/09/2022 to 22/12/2022. We expect this mating to produce a very good calf.

\$ Index Values

Vealer Terminal	Super Market	EU Heavy Steer
+\$26	+\$25	+\$42

Purchaser:\$

21 WAROONA MAREE N54 (PB)

DOB: 04/10/2017

Colour: Silver

Tattoo:ASH N54

Sex: F

GOLDEN HERO H7 (PB)

MONTEREY BLITZEM (PB)
GOLDEN ADELLE C22 (PB)**Sire: WAROONA HERO L16 (PB)**

WAROONA TAREE E56 (PB)

MONTEREY SUNDOWNER Z26 (PB)
WAROONA TAREE B27 (PB)

WOODBOURN FRANCE F48 (PB)

KELSO CRACKER C17 (PB)
WOODBOURN PEPPER A9 (PB)**Dam: WAROONA MAREE J42 (PB)**

WAROONA MAREE E24 (PB)

SHELLGARDI MISTER REALITY (PB) (AI)
WAROONA MAREE Y13 (PB)**June 2023 Murray Grey BREEDPLAN**

	CED	CED DTRS	GL	BW	200	400	600	MCW MILK	SS	DTC	CW	EMA	RIB	RUMP	RBY	IMF
EBV	-2.1	+0.0	+4.5	+24	+36	+52	+3	+0.4	+30	+1.3	-0.8	-1.1	+1.3	-0.5		
Acc	34%	43%	75%	62%	57%	59%	46%	30%	45%	34%	43%	43%	39%	35%		

Notes: Maree N54 is an exceptional young breeder with proven performance. She is the dam of Lot 7 in this sale. Her capacity is highlighted by the fact that Lot 7 is a twin. Mated with Waroona Houston N1 from 22/09/2022 to 22/11/2022. PTIC.

\$ Index Values

Vealer Terminal	Super Market	EU Heavy Steer
+\$33	+\$26	+\$43

Purchaser:\$

22 WAROONA DAINTY N13 (PB)

DOB: 17/07/2017

Colour: Silver

Tattoo:ASH N13

Sex: F

KELSO CRACKER C17 (PB)

KELSO YOGO Y13 (PB) (AI)
LINDSAY DONNA Z13 (GR2)**Sire: WOODBOURN FRANCE F48 (PB)**

WOODBOURN PEPPER A9 (PB)

JYNDARRA WARRIOR W3 (PB) (AI)
WOODBOURN MISS PEPPER X38 (PB)

MONTEREY BLITZEM (PB)

WILLALOOKA XEROX X64 (PB) (AI)
MONTEREY JOYCE Y129 (PB) (AI)**Dam: WAROONA DAINTY H22 (PB)**

WAROONA DAINTY Z8 (PB)

AUSGREY DRAGONHEART (PB)
WAROONA DAINTY 22ND (PB)

June 2023 Murray Grey BREEDPLAN																	
	CED	CED DTRS	GL	BW	200	400	600	MCW	MILK	SS	DTC	CW	EMA	RIB	RUMP	RBV	IMF
EBV	-1.3	+0.1	-0.3	+4.6	+25	+41	+60		+4	+0.3	-0.7	+35	+1.1	-0.9	-1.1	+1.4	-0.7
Acc	48%	36%	54%	80%	70%	67%	68%		57%	51%	28%	57%	47%	55%	55%	51%	47%

Notes: Dainty N13 is another of the outstanding females sired by Woodbourn France from a Monterey Blitzem cow. She has an even spread of EBVs with above average growth and IMF figures. Mated with Waroona Houston N1 from 22/09/2022 to 22/11/2022. PTIC.

\$ Index Values		
Vealer Terminal	Super Market	EU Heavy Steer
+\$37	+\$34	+\$53

Purchaser:\$

23 WAROONA TAREE N15 (PB)

DOB: 17/07/2017

Colour: Silver

Tattoo:ASH N15

Sex: F

MONTEREY BLITZEM (PB)

WILLALOOKA XEROX X64 (PB) (AI)
MONTEREY JOYCE Y129 (PB) (AI)**Sire: GOLDEN HERO H7 (PB)**

GOLDEN ADELLE C22 (PB)

PANDORA PARNELL (PB)
GOLDEN ADELLE V1 (PB) (AI)

MONTEREY SUNDOWNER Z26 (PB)

MONTEREY SUNDOWNER+97 (PB)
MONTEREY MISS ANNABELLE W71 (PB)**Dam: WAROONA TAREE C48 (PB)**

WAROONA TAREE Y19 (PB)

WAROONA VERBAL (PB)
WAROONA TAREE 10TH (PB)

June 2023 Murray Grey BREEDPLAN																	
	CED	CED DTRS	GL	BW	200	400	600	MCW	MILK	SS	DTC	CW	EMA	RIB	RUMP	RBV	IMF
EBV	-2.9	-1.5	+0.1	+4.0	+20	+32	+41		+1	-0.4	+0.5	+26	+1.4	-0.6	-0.9	+1.2	-0.5
Acc	41%	28%	50%	80%	69%	66%	67%		52%	47%	25%	54%	40%	50%	49%	46%	41%

Notes: N15 is a young Taree female carrying very strong Monterey bloodlines the result of a mating of Golden Hero with a Monterey Sundowner cow. She is a very quiet structurally sound female mated with Beemma Redline from 22/09/2022 to 22/12/2022. PTIC

\$ Index Values		
Vealer Terminal	Super Market	EU Heavy Steer
+\$25	+\$20	+\$30

18 Purchaser:\$

24 WAROONA TAREE N5 (PB)

DOB: 09/07/2017 Colour: Silver Tattoo: ASH N5 Sex: F

KELSO CRACKER C17 (PB) KELSO YOGO Y13 (PB) (AI)
LINDSAY DONNA Z13 (GR2)

Sire: WOODBOURN FRANCE F48 (PB)

WOODBOURN PEPPER A9 (PB) JYNDARRA WARRIOR W3 (PB) (AI)
WOODBOURN MISS PEPPER X38 (PB)

MONTEREY BLITZEM (PB) WILLALOOKA XEROX X64 (PB) (AI)
MONTEREY JOYCE Y129 (PB) (AI)

Dam: WAROONA TAREE E25 (PB)

WAROONA TAREE Z1 (PB) WAROONA VERBAL (PB)
WAROONA TAREE 12TH (PB)

June 2023 Murray Grey BREEDPLAN																
	CED	CED DTRS	GL	BW	200	400	600	MCW MILK	SS	DTC	CW	EMA	RIB	RUMP	RBY	IMF
EBV	-1.3	+0.3	-0.4	+4.4	+24	+37	+58	+4	-0.5	-0.4	+33	+1.2	-0.4	-0.4	+1.0	-0.4
Acc	48%	37%	54%	80%	70%	68%	69%	57%	50%	27%	58%	46%	53%	53%	50%	46%

Notes: Waroona Taree N5 is a young feminine cow with style and class that we are confident will go on to be a very successful breeder. Mated with Beamma Redline from 22/09/2022 to 22/12/2022. PTIC.

\$ Index Values		
Vealer Terminal	Super Market	EU Heavy Steer
+\$35	+\$29	+\$51

Purchaser: \$

25 WAROONA CLARETTE M41 (PB)

DOB: 19/08/2016 Colour: Silver Tattoo: ASH M41 Sex: F

KELSO CRACKER C17 (PB) KELSO YOGO Y13 (PB) (AI)
LINDSAY DONNA Z13 (GR2)

Sire: WOODBOURN FRANCE F48 (PB)

WOODBOURN PEPPER A9 (PB) JYNDARRA WARRIOR W3 (PB) (AI)
WOODBOURN MISS PEPPER X38 (PB)

MONTEREY BLITZEM (PB) WILLALOOKA XEROX X64 (PB) (AI)
MONTEREY JOYCE Y129 (PB) (AI)

Dam: WAROONA CLARETTE G19 (PB)

WAROONA CLARETTE C55 (PB) MONTEREY SUNDOWNER Z26 (PB)
WAROONA CLARETTE X40 (PB)

June 2023 Murray Grey BREEDPLAN																
	CED	CED DTRS	GL	BW	200	400	600	MCW MILK	SS	DTC	CW	EMA	RIB	RUMP	RBY	IMF
EBV	-1.8	+0.3	-0.4	+4.6	+26	+42	+59	+4	+0.4	-0.8	+34	+1.6	-0.4	-0.4	+1.1	-0.5
Acc	49%	36%	56%	81%	75%	73%	75%	58%	44%	28%	64%	47%	55%	55%	52%	48%

Notes: Waroona Clarette ASH M41 is a very structurally sound Woodbourn France daughter out of a Monterey Blitzem cow. A wonderful dam of both bulls and females. Mated with Beamma Redline from 22/09/2022 to 22/12/2022. PTIC.

\$ Index Values		
Vealer Terminal	Super Market	EU Heavy Steer
+\$37	+\$36	+\$54

Purchaser: \$



LOT 15



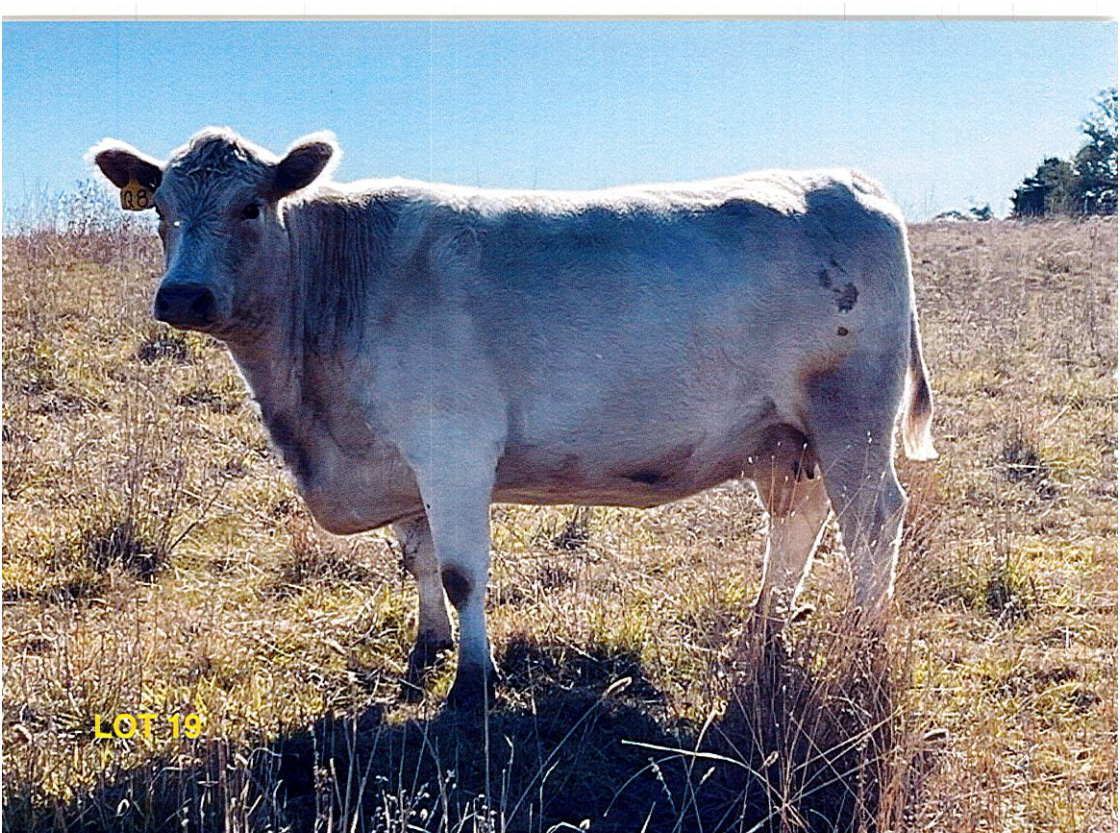
LOT 16



LOT 17



LOT 18



LOT 19



LOT 20



LOT 21



LOT 22



LOT 24

Notes

.....

.....

.....

.....

.....

.....

.....

.....

.....

.....

.....

.....

.....

.....

.....

REFERENCE SIRE WOODBOURN LARRY L9 (PB)

Born: 23/03/2015

Colour: Silver

Tattoo: L9

Sire: NAWARRA BANANA BENDER

Dam: WOODBOURN MISS CARRIE Z85 (PB)

	BW	MILK	200	400	600	MCW	SS	CWT	EMA	RIB	RUMP	RBY	IMF
EBV	+4.5	+4	+36	+52	+84	+92	-0.3	+54	+2.4	-1.6	-2.1	+2.5	-0.5
Acc	94%	66%	88%	88%	88%	76%	72%	77%	63%	74%	73%	69%	65%

REFERENCE SIRE WAROONA FRANCE P16 (PB)

Born: 25/08/2018

Colour: Silver

Tattoo: P16

Sire: WOODBOURN FRANCE F48 (PB)

Dam: SABER MIMOSA J28 (PB)

	BW	MILK	200	400	600	MCW	SS	CWT	EMA	RIB	RUMP	RBY	IMF
EBV	+5.1	+5	+32	+55	+69	+65	+1.0	+42	+0.8	-0.9	-1.2	+1.1	-0.5
Acc	89%	51%	82%	81%	80%	68%	58%	69%	53%	60%	60%	56%	48%

REFERENCE SIRE BEEAMMA REDLINE R34 (PB)

Born: 03/04/2020

Colour: Silver

Tattoo: R34

Sire: BEEAMMA NETWORK N57 (PB)

Dam: BEEAMMA ZDENA K14 (PB)

	BW	MILK	200	400	600	MCW	SS	CWT	EMA	RIB	RUMP	RBY	IMF
EBV	+4.5	+4	+31	+54	+74	+88	+1.2	+52	+2.2	-1.1	-1.6	+2.0	-0.4
Acc	75%	47%	68%	68%	69%	59%	69%	58%	45%	54%	54%	50%	41%

REFERENCE SIRE AYR PARK PETE P1 (PB)

Born: 08/03/2018

Colour: Silver

Tattoo: P1

Sire: WOODBOURN LEXUS L120 (PB)

Dam: AYR PARK WALLFLOWER G158 (PB)

	BW	MILK	200	400	600	MCW	SS	CWT	EMA	RIB	RUMP	RBY	IMF
EBV	+3.8	+0	+20	+31	+45	+49	+1.3	+26	+2.1	+0.6	+0.9	+0.4	+0.3
Acc	86%	43%	75%	73%	76%	63%	54%	61%	47%	59%	59%	54%	51%

EBV's Explained

Calving Ease EBVs (%) are based on calving difficulty scores, birth weights and gestation length information. More positive EBVs are favourable and indicate easier calving.

CE % Direct = Direct Calving Ease - The EBV for direct calving ease indicates the influence of the sire on calving ease in purebred females calving at two years of age.

CE % Daughters = Daughters' Calving Ease - The EBV for daughters' calving ease indicates how easily that sire's daughters will calve at two years of age.

Gestation Length EBV (days) is an estimate of the time from conception to the birth of the calf and is based on AI and hand mating records. Lower (negative) GL EBVs indicate shorter gestation length and therefore easier calving and increased growth after birth.

Birth Weight EBV (kg) is based on the measured birth weight of progeny, adjusted for dam age. The lower the value the lighter the calf at birth and the lower the likelihood of a difficult birth. This is particularly important when selecting sires for use over heifers.

200-Day Growth EBV (kg) is calculated from the weight of progeny taken between 80 and 300 days of age. Values are adjusted to 200 days and for age of dam. This EBV is the best single estimate of an animal's genetic merit for growth to early ages.

400-Day Weight EBV (kg) is calculated from the weight of progeny taken between 301 and 500 days of age, adjusted to 400 days and for age of dam. This EBV is the best single estimate of an animal's genetic merit for yearling weight.

600-Day Weight EBV (kg) is calculated from the weight of progeny taken between 501 and 900 days of age, adjusted to 600 days and for age of dam. This EBV is the best single estimate of an animal's genetic merit for growth beyond yearling age.

Mature Cow Weight EBV (kg) is based on the cow weight when the calf is weighed for weaning, adjusted to 5 years of age. This EBV is an estimate of the genetic difference in cow weight at 5 years of age and is an indicator of growth at later ages and potential feed maintenance requirements of the females in the breeding herd. Steer breeders wishing to grow animals out to a larger weight may also use the Mature Cow Weight EBV.

Milk EBV (kg) is an estimate of an animal's milking ability. For sires, this EBV indicates the effect of the daughter's milking ability, inherited from the sire, on the 200-day weights of her calves. For dams, it indicates her milking ability.

Scrotal Size EBV (cm) is calculated from the circumference of the scrotum taken between 300 and 700 days of age and adjusted to 400 days of age. This EBV is an estimate of an animal's genetic merit for scrotal size. There is also a small negative correlation with age of puberty in female progeny and therefore selection for increased scrotal size will result in reduced age at calving of female progeny.

Days to Calving EBV (days) indicates the fertility of the daughters of the sire. It is the time interval between the day when the female is first exposed to a bull in a paddock mating to the day when she subsequently calves. A negative EBV for days to calving indicates a shorter interval from bull-in date to calving and therefore higher fertility.

Carcase Weight EBV (kg) is based on abattoir carcase records and is an indicator of the genetic differences in carcase weight at the standard age of 650 days.

Eye Muscle Area EBV (sq cm) is calculated from measurements from live animal ultrasound scans and from abattoir carcase data, adjusted to a standard 300 kg carcase. This EBV estimates genetic differences in

eye muscle area at the 12/13th rib site of a 300 kg dressed carcass. More positive EBVs indicate better muscling on animals. Sires with relatively higher EMA EBVs are expected to produce better-muscled and higher percentage yielding progeny at the same carcass weight than will sires with lower EMA EBVs.

Rib Fat and Rump Fat EBVs (mm) are calculated from measurements of subcutaneous fat depth at the 12/13-rib site and the P8 rump site (from live animal ultrasound scans and from abattoir carcasses) and are adjusted to a standard 300 kg carcass. These EBVs are indicators of the genetic differences in fat distribution on a standard 300 kg carcass. Sires with low, or negative, fat EBVs are expected to produce leaner progeny at any particular carcass weight than will sires with higher EBVs.

Retail Beef Yield EBV (%) indicates genetic differences between animals for retail yield percentage in a standard 300 kg carcass. Sires with larger EBVs are expected to produce progeny with higher yielding carcasses.

Intramuscular Fat EBV (%) is an estimate of the genetic difference in the percentage of intramuscular fat at the 12/13th rib site in a 300 kg carcass. Depending on market targets, larger more positive values are generally more favourable.

Vealer Terminal Index (\$) – Estimates the genetic differences between animals in net profitability per cow joined for an example crossbred commercial herd (ie. using Murray Grey bulls over British bred females) targeting vealer production. Vealers are finished on grass and marketed at 365 kg live weight (average 200 kg HSCW and 9 mm P8 fat depth) at 10 months of age. Daughters are NOT retained for breeding and so no consideration is given to maternal traits (ie calving ease daughters, female fertility, mature cow weight).

Supermarket Index (\$) - Estimates the genetic differences between animals in net profitability per cow joined for an example Murray Grey commercial herd targeting production of steers for the domestic supermarket trade. Steers are either finished on grass, or grain fed for 70 days, and marketed at 470 kg live weight (average 260kg HSCW and 12mm fat) at 15 months of age. Daughters are retained for breeding.

Heavy Grass Fed Steer Index (\$) - Estimates the genetic differences between animals in net profitability per cow joined for an example Murray Grey commercial herd targeting pasture finished steers for heavier grass fed markets. Steers are assumed marketed at 620 kg live weight (340 kg HSCW and 14 mm P8 fat depth) at 24 months of age. Daughters are retained for breeding.

Accuracy (%) is based on the amount of performance information available on the animal and its close relatives - particularly the number of progeny analysed. Accuracy is also based on the heritability of the trait and the genetic correlations with other recorded traits. Hence accuracy indicates the “confidence level” of the EBV. The higher the accuracy value the lower the likelihood of change in the animal’s EBV as more information is analysed for that animal or its relatives. Even though an EBV with a low accuracy may change in the future, it is still the best estimate of an animal’s genetic merit for that trait. As more information becomes available, an EBV is just as likely to increase in value, as it is to decrease.

Breed Average EBV's for 2021 Born Calves

CED	CED DTRS	GL	BW	200	400	600	MCW	MILK	SS	DTC	CWT	EMA	RIB	RUMP	RBV	IMF
-0.9	+0.0	-0.7	+3.6	+24	+38	+54	+56	+4	+0.5	-1.8	+34	+1.7	-0.2	-0.2	+1.0	+0.1

Vealer Terminal Index (\$)	Supermarket Index (\$)	Heavy Grass Fed Steer Index (\$)
+\$ 40	+\$ 41	+\$ 57

Sale Information

Sale Disclaimer:

Whilst all due care and attention has been paid to accuracy in the completion of this catalogue, neither the vendors nor the selling agents or representatives thereof nor the Murray Grey Beef Cattle Society assume any responsibility whatsoever for the correctness, use or interpretation of the information on animals included within.

Guarantee:

All bulls have been inspected for soundness. However, if up to 12 months after delivery an animal is proved to be infertile or incapable of natural service (not resulting from an accident), we will offer a suitable replacement or credit for our next sale, minus the salvage value of the animal. This is provided the problem was not caused after the sale. The guarantee covers the purchase value of the bull, without interest or damages. The claim must be accompanied by a relevant veterinary certificate.

Insurance:

Please insure your animals as they are your responsibility at the fall of the hammer.

Transfer:

All animals will be transferred by the vendor with the Murray Grey Society unless otherwise indicated on the Buyers Instruction Slip.

Rebate:

A 2% rebate commission offered to outside agents introducing buyers in writing 24 hours prior to the sale and settling for same within 7 days of invoice.

The Sale:

The vendors reserve the right to place a reserve on any lot. These reserves will remain for the lifetime of the animal; i.e. no cheaper off farm later.

On arrival intending purchasers need to register and receive a bidding number.

Helmsman System:

For the duration of the sale, all animals are on the market simultaneously. You may bid on any animal of any lot number at any time, by filling in

a bid card with your bid price, the lot number and buyer number and give it to a "runner".

These bids will be recorded at the table in the order that they are received and marked on the board.

Where bids of equal amounts on the same animal are received the first bid received will be the standing bid.

You may open bidding at the reserve price indicated for each animal and contest bids in no less than \$100 amounts.

Bids are recorded with the buyer number on a large board adjacent to the animals. You can bid on any number of animals at once and see at a glance whether your bid stands or has been over bid.

A BID ONCE SUBMITTED AND RECORDED CANNOT BE RETRACTED.

If any dispute arises respecting a bid, the dispute will be decided by the auctioneer.

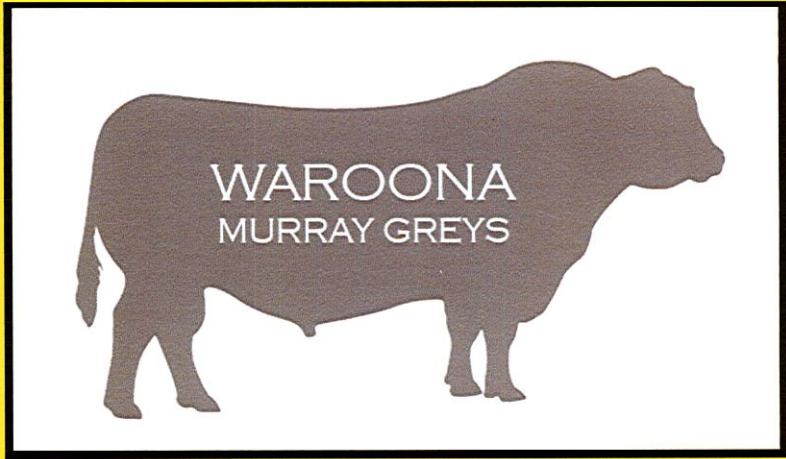
All lots are open for the sale for the full duration of the sale and all lots will conclude at the same time. If your "first choice" animal goes beyond your limits you can still bid on any other animal in the sale.

The sale will remain open for 30 minutes initially.

At the conclusion of 30 minutes a 2 minute bid clock will commence. A bid on any lot will restart the countdown clock. Any further bids on any lot will trigger the same process until a full 2 minute "no bid" period when the sale will conclude on all lots.

The stock shall be at the risk of the buyer from the fall of the hammer. With the Helmsman system all lots are knocked down at the same time.

Bidding will be exclusive of GST, with GST being added to the final auction price and invoiced to the purchaser.



Waroona
550 Packham Drive
MO LONG NSW 2866

